

Shepherd University Academic Affairs Data 2013-2017

A. Students by Residency

- Table 1. Paid student FTE by Residency, student FTE by residency, headcount by residency
- Paid student FTE by residency, Fall 2013 – Fall 2017*
 - Student FTE by residency, Fall 2013 – Fall 2017*
 - Student headcount by residency, Fall 2013 – Fall 2017*

B. Undergraduate Students and Faculty

- Table 2. Faculty FTE
- Table 3. Baccalaureate Majors per Department and Majors per Full-Time Faculty
- Majors per Department, Fall 2017*
 - Mean Number of Majors by Department, Fall 2013 - Fall 2017*
 - Change in Ratio of Majors to FT Faculty, Fall 2013 - Fall 2017*
 - Mean Ratios of Majors to FT Faculty, Fall 2013 - Fall 2017*
- Table 4. RBA Majors
- Table 5. Minors by Department
- Minors by Department, Fall 2017*
 - Mean Number of Minors by Department, Fall 2013 - Fall 2017*
- Table 6. Teacher Education Concentrations
- Students in Teacher Education Concentrations, Fall 2017*
 - Mean Numbers of Students in Teacher Education Concentrations, Fall 2013 – Fall 2017*
- Table 7. Baccalaureate Majors per Department and Teacher Education Students by Department of Concentration Advisement
- Total Majors and Teacher Education Students, Fall 2017*
 - Mean Totals of Majors and Teacher Education Students, Fall 2013 – Fall 2017*
- Table 8. FTE Student to FTE Faculty Ratios
- Change in Ratios(FTE Students: FTE Faculty), 2013-2017*
 - Mean Ratios (FTE Students: FTE Faculty), 2013-2017*
- Table 9. Student FTE Generated by Full-Time Faculty to Full-Time Faculty FTE Ratios
- Change in FTE Ratios(FTE Students: FTE Faculty) 2013-2017*
 - Mean FTE Ratios(FTE Students: FTE Faculty) 2013-2017*
- Table 10. Student FTE Generated by Part-Time Faculty to Part-Time Faculty FTE Ratios
- Change in FTE Ratios(FTE Students: FTE Faculty) 2013-2017*
 - Mean FTE Ratios(FTE Students: FTE Faculty) 2013-2017*
- Table 11. Student-to-Faculty FTE Ratios in Lower Level Courses
- Change in Student FTE to Faculty FTE Ratios in Lower Level Courses, 2013-2017*
 - Mean Student FTE to Faculty FTE Ratios in Lower Level Courses, 2013-2017*
- Table 12. Student-to-Faculty FTE Ratios in Upper Level Courses
- Change in Student FTE to Faculty FTE Ratios in Upper Level Courses, 2013-2017*

- b. *Mean Student FTE to Faculty FTE Ratios in Upper Level Courses, 2013-2017*
- Table 13. Graduates from Baccalaureate Programs
 - a. *Average Number of Baccalaureate Degrees by Major, 2012-2013 to 2016-2017*
 - b. *Baccalaureate Graduates in 2016-2017*
- Table 14. SCH per FTE faculty, for non-General Studies / Core Curriculum courses
 - a. *Overall rank, Fall 2017, non-GS/CC courses*
 - b. *Overall rank, Fall 2013-2017, non-GS/CC courses*
- Table 15. SCH per FTE faculty, for General Studies / Core Curriculum courses
 - a. *Overall rank, Fall 2017, GS/CC courses*
 - b. *Overall rank, Fall 2013-2017, GS/CC courses*
- Table 16. Core Curriculum courses by time of day
 - a. *Core Curriculum courses by time of day, Monday-Thursday*
 - b. *Core Curriculum courses by time of day, Friday, weekdays and Saturday*
- Table 17. Core Curriculum courses offered in standard timeslots, weekdays
 - a. *CC courses offered in standard timeslots, weekdays*
- Table 18. Online and hybrid courses, Fall 2013 – Fall 2017
 - a. *Hybrid and online courses, Fall 2013 – Fall 2017*
 - b. *Percentages of hybrid and online courses, Fall 2013 – Fall 2017*

C. Graduate Students and Faculty

- Table 19. Students Enrolled in Graduate Programs
- Table 20. Graduates from Graduate Programs
- Table 21. Graduate Student to Faculty FTE Ratios
 - a. *Mean Change in FTE Ratios (Student FTE: Faculty FTE) for Graduate Courses, 2013-2017*
 - b. *Mean FTE Ratios (Student FTE: Faculty FTE) for Graduate Courses, 2013-2017*

D. Shepherd University Student Demographic Data

- Table 22. Degree Targets
- Table 23. Mean ACT and ACT Equivalent Scores by Residency
- Table 24. Status by Residency, Five-Year Trends
- Table 25. ACT and ACT Equivalent Scores by Residency
- Table 26. Class Level by Residency
- Table 27. Retention of Fall 2016 Freshman Cohort by Residency
- Table 28. Graduation of Fall 2011 Freshman Cohort by Residency
- Table 29. Student Headcount by Registration Type
- Table 30. Student FTE by Registration Type
- Table 31. Student Headcount by Race and Ethnicity

E. Shepherd University Global Information

- Table 32. Shepherd University FTE by Department and Instructor

This Acrobat file has been bookmarked for your convenience. To see bookmarks, click on the “Bookmarks” tab on the left side of the Acrobat window.

Table 1a. Paid student FTE by residency

Residency	SU					2013-2017
	Fall 2013	Fall 2014	Fall 2015	Fall 2016	Fall 2017	% Change
Total	3645.28	3463.82	3282.15	3092.02	3010.05	-17.4%
In-state	2227.17	2130.63	2032.13	1954.38	1943.77	-12.7%
Out-of-state	1418.12	1333.18	1250.02	1137.63	1066.28	-24.8%

Table 1b. Student FTE by residency

Residency	SU					2013-2017
	Fall 2013	Fall 2014	Fall 2015	Fall 2016	Fall 2017	% Change
Total	3642.09	3457.76	3282.09	3094.38	3002.35	-17.6%
In-state	2224.27	2127.23	2028.27	1946.90	1930.28	-13.2%
Out-of-state	1417.82	1330.53	1253.82	1147.48	1072.07	-24.4%

Table 1c. Student headcount by residency

Residency	SU					2013-2017
	Fall 2013	Fall 2014	Fall 2015	Fall 2016	Fall 2017	% Change
Total	4275	4119	3913	3826	3789	-11.4%
In-state	2592	2511	2361	2333	2321	-10.5%
Out-of-state	1683	1608	1552	1493	1468	-12.8%

General Explanation/Definitions.

1. One student *FTE* (full-time equivalent) equals 15 credit hours for baccalaureate students and 12 credit hours for graduate students.
2. The **% change** is the difference between the most recent data and the first column of data, divided by the first column of data.
3. Numbers are for undergraduate and graduate students combined.

Table 2. Faculty FTE

Department						2013-2017	
	Fall 2013	Fall 2014	Fall 2015	Fall 2016	Fall 2017	Mean	% Change
CAT	14.46	13.75	12.20	12.47	13.20	13.22	-8.7%
MCOM	7.75	7.25	7.50	7.00	6.74	7.25	-13.0%
ENGL	24.34	21.89	19.32	17.78	18.28	20.32	-24.9%
HIST	11.07	9.82	10.31	10.26	7.19	9.73	-35.0%
MUSC	13.32	14.07	15.04	13.22	12.57	13.64	-5.6%
<i>Arts and Humanities</i>	<i>70.94</i>	<i>66.78</i>	<i>64.37</i>	<i>60.73</i>	<i>57.98</i>	<i>64.16</i>	<i>-18.3%</i>
ACCT	3.25	3.50	3.25	3.00	2.75	3.15	-15.4%
BADM	7.25	8.00	7.30	8.12	9.25	7.98	27.6%
ECON / ECFN	6.25	6.50	5.74	6.00	5.75	6.05	-8.0%
<i>Business</i>	<i>16.75</i>	<i>18.00</i>	<i>16.29</i>	<i>17.12</i>	<i>17.75</i>	<i>17.18</i>	<i>6.0%</i>
FACS	3.16	3.83	3.07	3.33	3.57	3.39	13.0%
PSCI / PSGS	7.25	5.25	4.75	5.00	4.65	5.38	-35.9%
PSYC	9.25	9.65	9.87	9.25	10.06	9.62	8.8%
SOGE	9.99	9.50	9.00	10.74	11.00	10.05	10.1%
SOWK	3.42	3.42	3.17	2.67	3.25	3.19	-5.0%
<i>Social & Behavioral Sci.</i>	<i>33.07</i>	<i>31.65</i>	<i>29.86</i>	<i>30.99</i>	<i>32.53</i>	<i>31.62</i>	<i>-1.6%</i>
EDUC	9.86	13.33	12.60	12.36	12.94	12.22	31.2%
HPER	23.75	22.57	22.24	24.58	22.33	23.09	-6.0%
NURS	6.83	7.67	7.33	6.92	6.75	7.10	-1.2%
<i>Education and Prof. St.</i>	<i>40.44</i>	<i>43.57</i>	<i>42.17</i>	<i>43.86</i>	<i>42.02</i>	<i>42.41</i>	<i>3.9%</i>
BIOL	11.50	9.92	11.12	10.33	11.28	10.83	-1.9%
CHEM	6.91	6.53	6.42	6.42	6.03	6.46	-12.7%
CSME	17.57	16.91	16.56	15.32	15.72	16.42	-10.5%
ENVS / ENPS	7.08	7.42	6.33	7.58	6.83	7.05	-3.5%
<i>Natural Sciences & M.</i>	<i>43.06</i>	<i>40.78</i>	<i>40.43</i>	<i>39.65</i>	<i>39.86</i>	<i>40.76</i>	<i>-7.4%</i>
Stretch English	2.17	1.83	1.67	1.33	1.50	1.70	-30.9%
Stretch Math	2.83	2.83	2.83	2.49	2.50	2.70	-11.7%
<i>Stretch</i>	<i>5.00</i>	<i>4.66</i>	<i>4.50</i>	<i>3.82</i>	<i>4.00</i>	<i>4.40</i>	<i>-20.0%</i>
Shepherd University	209.26	205.44	197.62	196.17	194.14	200.53	-7.2%

General Explanation/Definitions.

1. One faculty **FTE** (full-time equivalent) equals 12 hours of instructional responsibility. Mass Communications' Fall 2017 FTE of 6.74 accounts for 81 hours of instruction (12*6.74) .
2. The **mean** is the average for five years.
3. The **% change** is the difference between the most recent and the earliest fall semester FTE's divided by the earliest fall FTE. For example, for Mass Communications in Fall 2017, this would be (6.74 - 7.75) / 7.75.
4. Numbers include undergraduate instruction only.

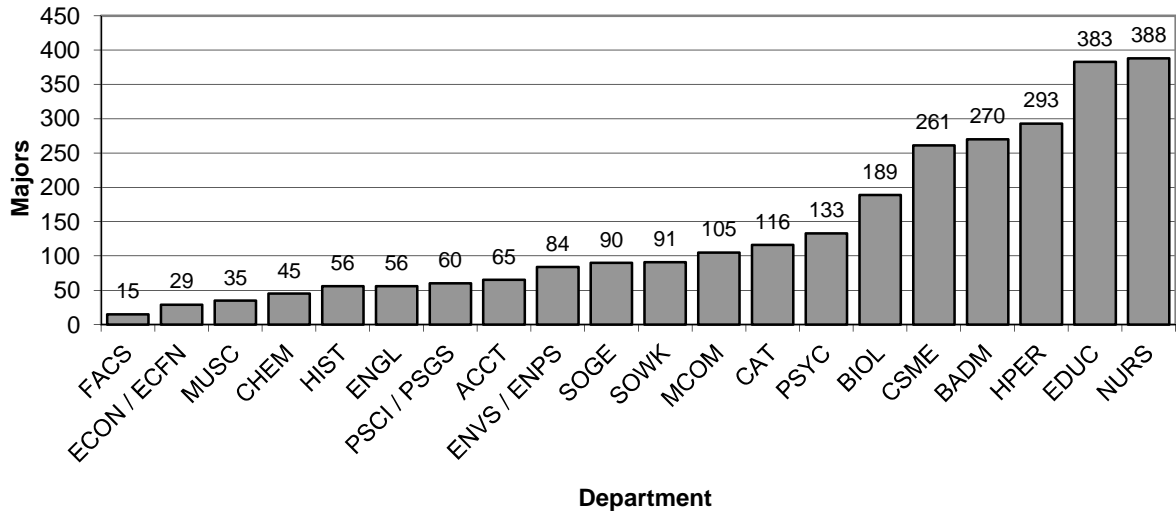
Table 3. Baccalaureate Majors per Department and Majors per Full-Time Faculty

Department	Fall 2013			Fall 2014			Fall 2015			Fall 2016			Fall 2017			Fall 2013-2017		
	N	FT Fac	N/FT Fac	N	FT Fac	N/FT Fac	N	FT Fac	N/FT Fac	N	FT Fac	N/FT Fac	N	FT Fac	N/FT Fac	Mean N/FT Fac	Change	Percentage Change in Majors
CAT	172	10	17.2	160	10	16.0	144	9	16.0	120	9	13.3	116	11	10.5	12.2	-3.87	-30.2%
MCOM	124	5	24.8	125	4	31.3	104	4	26.0	104	4	26.0	105	4	26.3	22.4	1.20	-16.1%
ENGL	102	14	7.3	93	13.5	6.9	79	13.5	5.9	76	13.5	5.6	56	13.5	4.1	5.0	-1.66	-25.5%
HIST	114	7	16.3	104	6	17.3	84	7	12.0	72	7	10.3	56	7	8.0	10.7	-6.00	-36.8%
MUSC	48	8	6.0	39	8	4.9	38	8	4.8	30	8	3.8	35	7.5	4.7	4.0	-2.25	-37.5%
<i>Arts and Humanities</i>	560	44	12.7	521	41.5	12.6	449	41.5	10.8	402	41.5	9.7	368	43	8.6	9.1	-3.04	-28.2%
ACCT	86	3	28.7	84	3	28.0	85	3	28.3	75	3	25.0	65	3	21.7	21.9	-3.67	-12.8%
BADM	313	6	42.4	290	6	39.5	291	5	44.9	243	5	48.6	270	4.5	60.0	39.2	6.23	-22.4%
ECON / ECFN	42	5	8.4	32	5	6.4	32	5	6.4	29	5	5.8	29	5	5.8	5.5	-2.60	-31.0%
<i>Business</i>	441	14	31.5	406	14	29.0	408	13	31.4	347	13	26.7	364	12.5	29.1	24.6	-4.81	-21.3%
FACS	26	2	16.0	26	2	14.4	23	2	16.2	22	1	22.0	15	1	15.0	13.9	6.00	-15.4%
PSCI / PSGS	80	5	16.0	72	5	14.4	81	5	16.2	73	5	14.6	60	4	15.0	12.7	-1.40	-8.8%
PSYC	166	6	16.0	162	6	27.0	132	6	22.0	123	6	20.5	133	6	22.2	17.9	4.50	-25.9%
SOGE	141	6.5	21.7	146	6.5	22.5	117	6.5	18.0	110	6.5	16.9	90	4	22.5	16.9	-4.77	-22.0%
SOWK	105	3	35.0	82	3	27.3	86	3	28.7	97	4	24.3	91	6.5	14.0	21.5	-10.75	-7.6%
<i>Social & Behavioral Sci.</i>	518	22.5	23.0	488	22.5	21.7	439	22.5	19.5	425	22.5	18.9	389	21.5	18.1	16.9	-4.13	-18.0%
EDUC	564	14.5	38.9	539	14.5	37.2	512	13.5	37.9	433	13.5	32.1	383	11.5	33.3	29.9	-6.82	-23.2%
HPER	304	8.5	35.8	314	8.5	36.9	314	8.5	36.9	319	8.5	37.5	293	8	36.6	30.6	1.76	4.9%
NURS	490	11	44.5	454	9	50.4	433	11	39.4	438	13	33.7	388	13	29.8	33.0	-10.85	-10.6%
<i>Education & Prof. St.</i>	1358	34	39.9	1307	32	40.8	1259	33	38.2	1190	35	34.0	1064	32.5	32.7	30.9	-5.94	-12.4%
BIOL	222	9.5	23.4	204	9.5	21.5	203	9.5	21.4	190	8.5	22.4	189	9	21.0	18.3	-1.02	-14.4%
CHEM	63	5.75	11.0	52	5.75	9.0	50	5.75	8.7	43	5.75	7.5	45	5.5	8.2	7.4	-3.48	-31.7%
CSME	222	11	20.2	216	11	19.6	244	11	22.2	229	11	20.8	261	12	21.8	17.4	0.64	3.2%
ENVS / ENPS	115	6	19.2	107	6	17.8	99	6	16.5	87	6	14.5	84	6	14.0	13.7	-4.67	-24.3%
<i>Natural Sciences & M.</i>	622	32.25	19.3	579	32.25	18.0	596	32.25	18.5	549	31.25	17.6	579	32.5	17.8	15.2	-1.72	-11.7%
Shepherd University	3499	146.8	23.8	3301	142.3	23.2	3151	142.3	22.2	2913	143.3	20.3	2764	142	19.5	18.2	-3.51	-16.7%

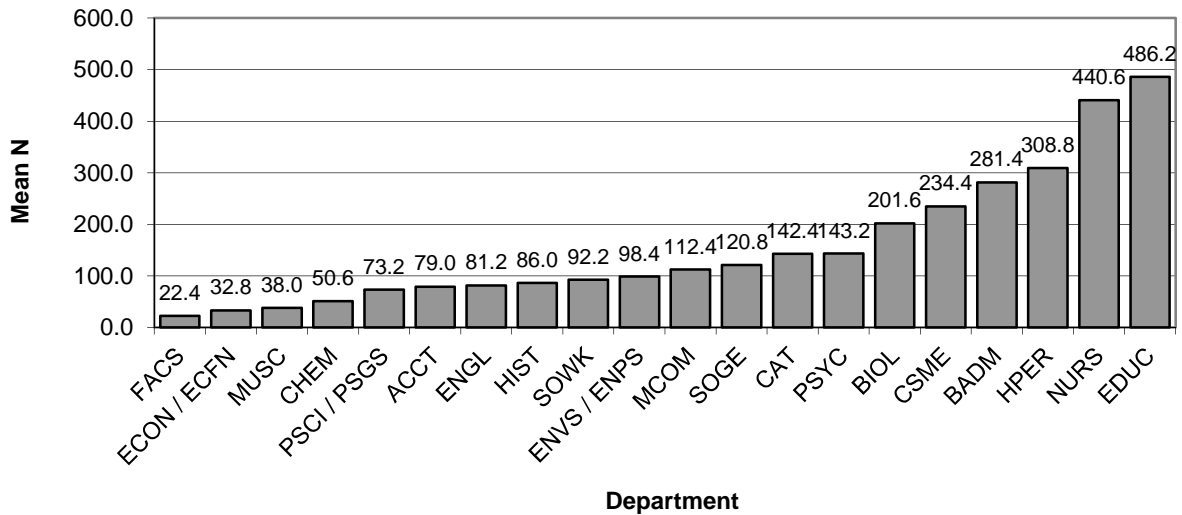
General Explanation/Definitions.

1. **N** is the number of undergraduate students in degree programs offered by the department. This includes first and second majors.
2. **FT Fac** is the number of full-time faculty in the department including visiting faculty. This is generally a count of "bodies" from the faculty list produced by the VPAA's office. Exceptions are where there is a permanent contractual specification of less than full-time; released time is not counted and neither is leave, unless there is a full-time replacement, because those are unlikely to affect the number of majors. Herendeen, Benedict, Legreid, Martz, Renninger, Toole, Warburton, and Cantrell are all counted as *half* positions; Beard is not included. R. Stevens is not counted here, as he works exclusively with graduate students.
3. The **N/FT Fac** is the ratio of students to faculty.
4. The **mean N/FT Fac** is the average N/FT Fac for the years shown.
5. The **change** is the current year's N/FT Fac minus the first year's N/FT Fac.
6. The **percentage change in majors** is the difference between the current year's number of majors and the first year's number of majors, divided by the first year's number of majors.

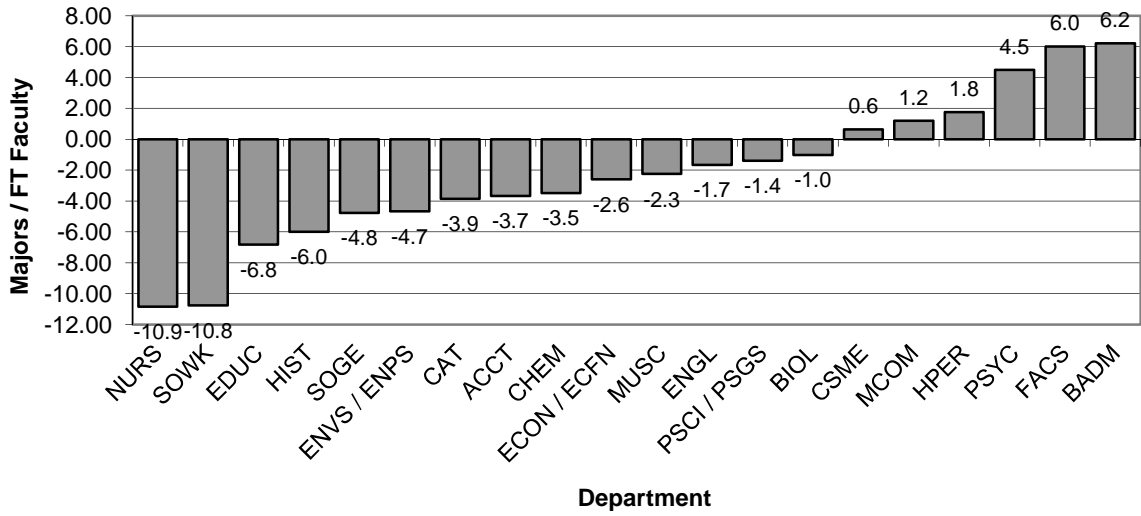
Graph 3A: Majors per Department, Fall 2017
(from Table 3)



Graph 3B: Mean Number of Majors by Department, Fall 2013 - Fall 2017
(from Table 3)



**Graph 3C: Change in Ratio of Majors to FT Faculty,
Fall 2013 - Fall 2017**
(from Table 3)



**Graph 3D: Mean Ratios of Majors to FT Faculty,
Fall 2013 - Fall 2017**
(from Table 3)

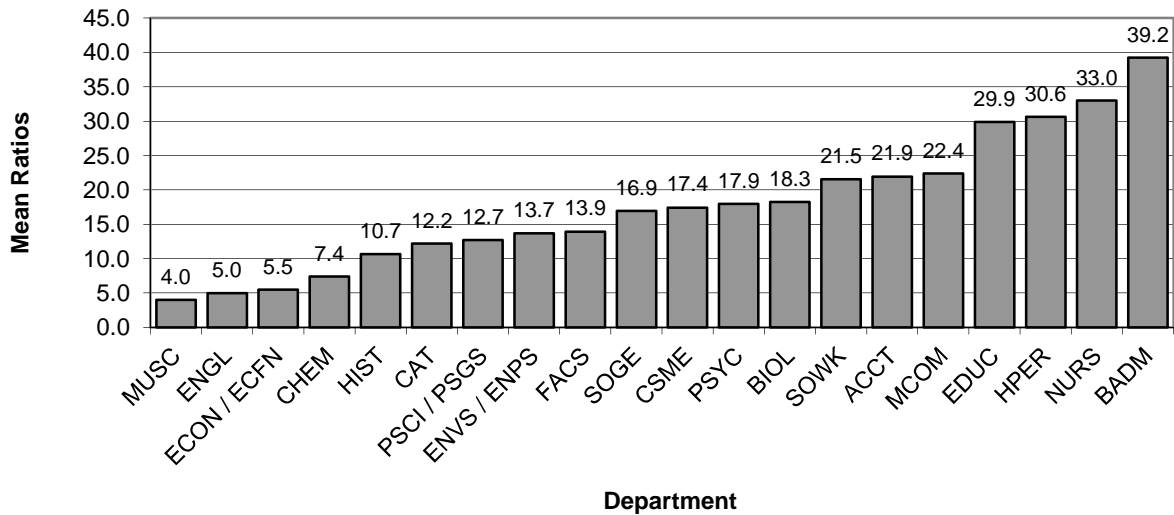


Table 4. RBA majors

RBA	2013	2014	2015	2016	2017
Headcount	135	272	147	149	135
Full-time	59	163	46	55	58
Non-credit	0	0	1	0	0
Part-time	76	109	100	94	77
FTE	82.77	196.20	77.87	84.67	83.33
Average SCH per semester	9.20	10.82	7.95	8.52	9.26
Average age of majors	37.1	31.5	39.5	38.4	37.1
Graduates	91	111	88	132	

Headcount, FTE, average SCH per semester, and average age are calculated for Fall semester of the listed academic year.

Graduates are counted from the fall of the listed year through the summer of the following year. Numbers of graduates are not available for the most recent year listed.

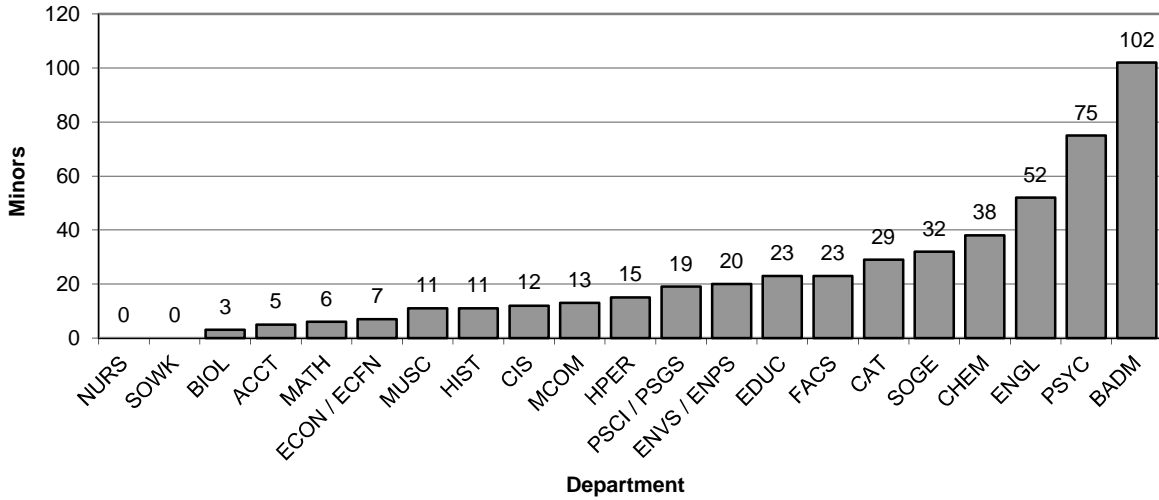
Table 5. Minors by Department

Department	Fall 2013		Fall 2014		Fall 2015		Fall 2016		Fall 2017		2013-2017		
	N	N Change	N	N Change	N	N Change	N	N Change	N	N Change	Mean N	Change	Mean Change
CAT	34	-7	35	1	40	5	30	-10	29	-1	33.6	-5.00	-2.40
MCOM	26	7	22	-4	23	1	21	-2	13	-8	21.0	-13.0	-1.20
ENGL	59	-3	64	5	47	-17	53	6	52	-1	55.0	-7.0	-2.00
HIST	21	3	26	5	24	-2	15	-9	11	-4	19.4	-10.0	-1.40
MUSC	15	5	16	1	10	-6	6	-4	11	5	11.6	-4.0	0.20
<i>Arts and Humanities</i>	155	5	163	8	144	-19	125	-19	116	-9	140.6	-39.0	-6.80
ACCT	8	2	17	9	6	-11	6	0	5	-1	8.4	-3.0	-0.20
BADM	104	18	98	-6	102	4	88	-14	102	14	98.8	-2.0	3.20
ECON / ECFN	18	-1	10	-8	5	-5	6	1	7	1	9.2	-11.0	-2.40
<i>Business</i>	130	19	125	-5	113	-12	100	-13	114	14	116.4	-16.0	0.60
FACS	22	1	22	0	26	4	28	2	23	-5	24.2	1.0	0.40
PSCI / PSGS	28	2	21	-7	20	-1	18	-2	19	1	21.2	-9.0	-1.40
PSYC	73	19	72	-1	89	17	87	-2	75	-12	79.2	2.0	4.20
SOGE	32	-9	44	12	49	5	41	-8	32	-9	39.6	0.0	-1.80
SOWK	0	0	0	0	0	0	0	0	0	0	0.0	0.0	0.00
<i>Social & Behavioral Sci.</i>	155	13	159	4	184	25	174	-10	149	-25	164.2	-6.0	1.40
EDUC	24	-1	20	-4	23	3	22	-1	23	1	22.4	-1.0	-0.40
HPER	24	-3	24	0	20	-4	28	8	15	-13	22.2	-9.0	-2.40
NURS	0	0	0	0	0	0	0	0	0	0	0.0	0.0	0.00
<i>Education and Prof. St.</i>	48	-4	44	-4	43	-1	50	7	38	-12	44.6	-10.0	-2.80
BIOL	16	1	10	-6	12	2	7	-5	3	-4	9.6	-13.0	-2.40
CHEM	55	-13	46	-9	50	4	63	13	38	-25	50.4	-17.0	-6.00
CIS	11	-4	5	-6	13	8	6	-7	12	6	9.4	1.0	-0.60
MATH	11	-1	9	-2	7	-2	6	-1	6	0	7.8	-5.0	-1.20
ENVS / ENPS	16	-5	11	-5	14	3	18	4	20	2	15.8	4.0	-0.20
<i>Natural Sciences & M.</i>	109	-22	81	-28	96	15	100	4	79	-21	93.0	-30.0	-10.40
Shepherd University	597	11	572	-25	580	8	549	-31	496	-53	558.8	-101.0	-18.00

General Explanation/Definitions.

1. **N** is the number of students in minor programs offered by the department.
2. The **N change** is the difference in the number of students in consecutive years.
3. The **mean N** is the mean number of students over the years represented (five years).
4. The **mean change** is the sum of the annual changes divided by the number of annual changes.
5. Women's Studies is not attached to any department. There were twelve WMST minors in Fall 2017.
6. Appalachian Studies is not attached to any department. There were seven APPN minors in Fall 2017.

Graph 5A: Minors by Department, Fall 2017
(from Table 5)



Graph 5B: Mean Number of Minors by Department, Fall 2013 - Fall 2017
(from Table 5)

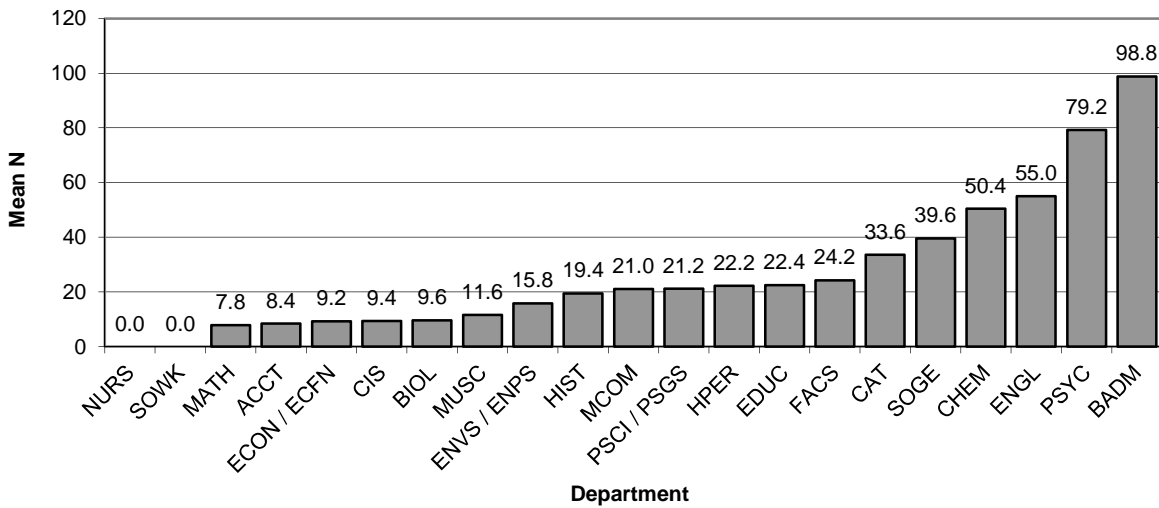


Table 6. Teacher Education Concentrations

Department	Teaching Concentration	Fall 2013	Fall 2014	Fall 2015	Fall 2016	Fall 2017	Mean	Change	Advising F17	
									Fac	Majors
CAT	Art	29	27	22	20	15	22.6	-14	11	30
Biology	Biology	7	5	2	2	2	3.6	-5	5.5	4
Business Admin / FACS	FACS	3	4	7	5	3	4.4	0	1	6
Biology	Chemistry	4	3	1	1	2	2.2	-2	9	4
Education	Elementary	269	254	225	202	136	217.2	-133	11.5	272
English	English	47	49	49	27	19	38.2	-28	13.5	38
Biology	General Science	8	6	3	4	6	5.4	-2	9	12
HPERS	Health, Phys. Ed.	107	83	68	62	59	75.8	-48	8	118
CSME	Mathematics	37	36	16	14	12	23.0	-25	12	24
Music	Music	78	76	84	70	57	73.0	-21	7.5	114
Education	Social Studies	59	61	59	44	50	54.6	-9	11.5	100
English	Spanish	5	2	4	4	3	3.6	-2	13.5	6
Education	C & I	18	14	22	18	13	17.0	-5	11.5	26

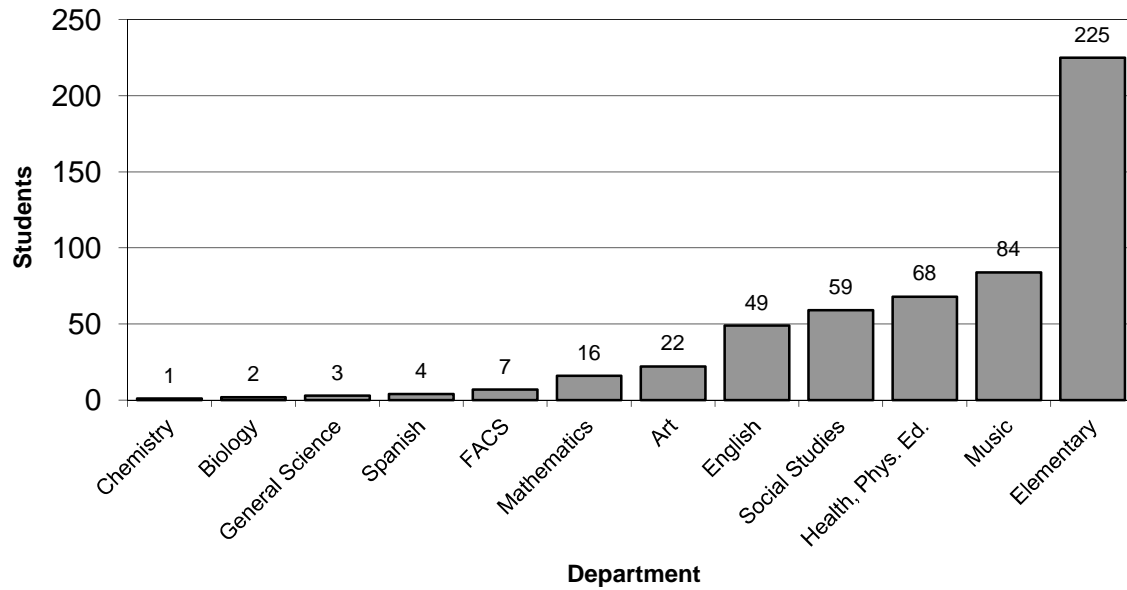
Note that the C & I students are included both in the Education department and in the departments of their concentrations. The secondary education majors are included only in the departments of their concentrations.

The Advising F17 "majors" is the number of students in the Fall 2017 column multiplied by 2, as Joe Simplicio specified starting with the 2003 reports. "Fac" is the number of full-time faculty in the department in which the concentration is housed.

General Explanation/Definitions.

1. A **concentration** is a teaching specialty such as English or Biology. The 13 C&I graduate students' concentrations have been added to their departments. Of the C&I students, two are in English, six are Individualized and five are in Special Education.
2. The **department** is the unit responsible for the concentration.
3. The numbers for each semester are the number of declared students in each concentration. Any given student may have more than one concentration.
4. The **mean** is the average of the annual number of students in a given concentration.
5. The **change** is the number of students in the current year minus the number of students in the first year.

Graph 6A. Students in Teacher Education Concentrations, Fall 2017
(from Table 6)



Graph 6B. Mean Numbers of Students in Teacher Education Concentrations, Fall 2013-Fall 2017
(from Table 6)

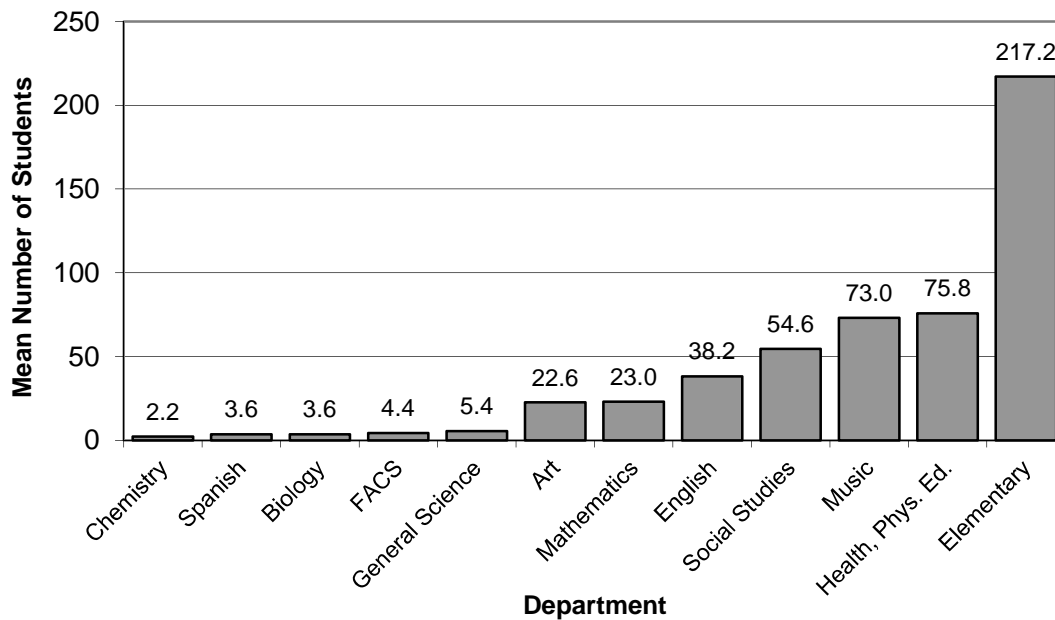


Table 7. Baccalaureate Majors per Department and Teacher Education Students by Department of Concentration Advisement

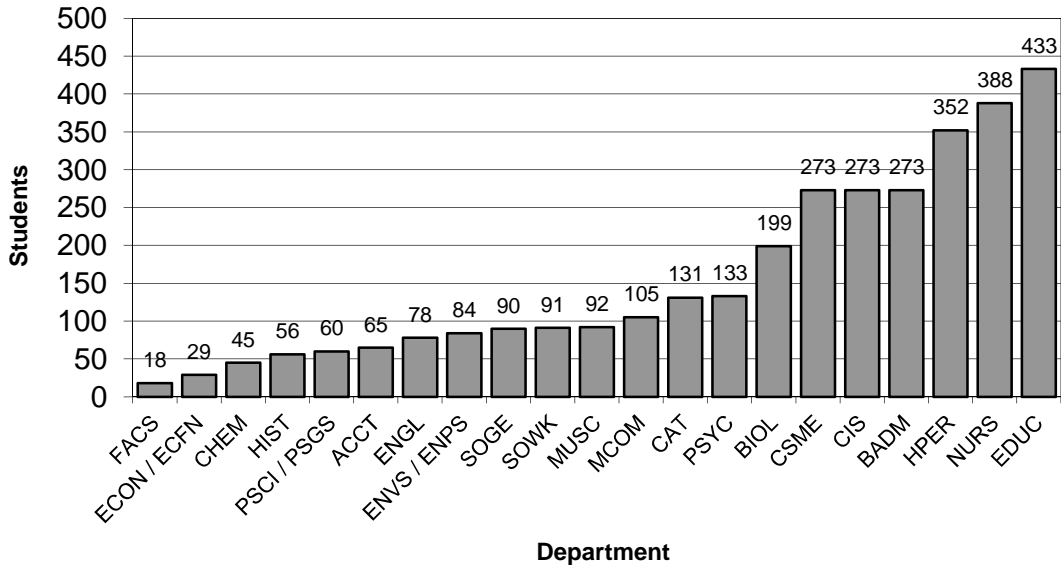
Department	Fall 2013			Fall 2014			Fall 2015			Fall 2016			Fall 2017			Fall 2013-17		
	N	Secondary Education and C&I	Total	N	Secondary Education and C&I	Total	N	Secondary Education and C&I	Total	N	Secondary Education and C&I	Total	N	Secondary Education and C&I	Total	Mean N	Mean Secondary Education	Mean Total
CAT	172	29	201	160	27	187	144	22	166	120	20	140	116	15	131	142.4	22.6	165.0
MCOM	124	0	124	125	0	125	104	0	104	104	0	104	105	0	105	112.4	0.0	112.4
ENGL	102	52	154	93	51	144	79	53	132	76	31	107	56	22	78	81.2	41.8	123.0
HIST	114	0	114	104	0	104	84	0	84	72	0	72	56	0	56	86.0	0.0	86.0
MUSC	48	78	126	39	76	115	38	84	122	30	70	100	35	57	92	38.0	73.0	111.0
<i>Arts and Humanities</i>	560	159	719	521	154	675	449	159	608	402	121	523	368	94	462	460.0	137.4	597.4
ACCT	86	0	86	84	0	84	85	0	85	75	0	75	65	0	65	79.0	0.0	79.0
BADM	313	0	316	290	0	294	291	0	298	243	0	270	270	0	273	281.4	4.4	290.2
ECON / ECFN	42	0	42	32	0	32	32	0	32	29	0	29	29	0	29	32.8	0.0	32.8
<i>Business</i>	441	0	441	406	0	406	408	0	408	347	0	347	364	0	364	393.2	0.0	393.2
FACS	26	3	26	26	4	26	23	7	23	22	5	22	15	3	18	22.4	4.4	23.0
PSCI / PSGS	80	0	80	72	0	72	81	0	81	73	0	67	60	0	60	73.2	0.0	72.0
PSYC	166	0	166	162	0	162	132	0	132	123	0	123	133	0	133	143.2	0.0	143.2
SOGE	141	0	141	146	0	146	117	0	117	110	0	110	90	0	90	120.8	0.0	120.8
SOWK	105	0	105	82	0	82	86	0	86	97	0	97	91	0	91	92.2	0.0	92.2
<i>Social & Behavioral Sci.</i>	518	3	521	488	4	492	439	7	446	425	5	419	389	3	392	451.8	4.4	454.0
EDUC	564	69	633	539	64	603	512	61	573	433	44	477	383	50	433	486.2	57.6	543.8
HPER	304	107	411	314	83	397	314	68	382	320	62	382	293	59	352	309.0	75.8	384.8
NURS	490	0	490	454	0	454	433	0	433	438	0	438	388	0	388	440.6	0.0	440.6
<i>Education & Prof. St.</i>	1358	435	1793	1307	398	1705	1259	352	1611	1191	106	1297	1064	109	1173	1235.8	280.0	1515.8
BIOL	222	19	241	204	14	218	203	6	209	190	7	197	189	10	199	201.6	11.2	212.8
CHEM	63	0	63	52	0	52	50	0	50	43	0	43	45	0	45	50.6	0.0	50.6
CSME	190	37	227	193	36	229	217	16	233	206	14	206	261	12	273	213.4	23.0	233.6
ENVS / ENPS	115	0	115	107	0	107	99	0	99	87	0	87	84	0	84	98.4	0.0	98.4
<i>Natural Sciences & M.</i>	590	56	646	556	50	606	569	22	591	549	21	570	579	22	601	568.6	34.2	602.8
Shepherd University	3467	653	4120	3278	606	3884	3124	540	3664	2914	253	3167	2764	228	2992	3109.4	456.0	3565.4

General Explanation/Definitions.

1. **N** is the number of undergraduate students in degree programs offered by the department. This includes first and second majors.
2. **Secondary Education and C&I** is the number of Secondary Education and C&I students with concentrations housed in that department. "Housing" is considered to be in the department if the Secondary Education coordinator for the concentration is in the department. For EDUC, numbers include Secondary Education Social Studies concentrations, and C&I Elementary Education and Social Studies concentrations; baccalaureate Elementary Education majors are not counted here.
3. **Total** is the sum of **N** and **Secondary Education**. Note that, for the EDUC department, this double-counts some students (as listed in the "Secondary Education and C&I" description above), and is therefore not likely to be useful.

Concentration housings are as follows:
ART / CAT: Art
BIOL: Biology, Chemistry, General Science
CSME: Mathematics
EDUC: Social Studies, C&I
FACS: FACS (with BADM through Fall 2016)
ENGL: English, Spanish
HPERS: Health and Physical Education
MUSC: Music

Graph 7a. Total Majors and Teacher Education Students, Fall 2017
(from Table 7)



Graph 7B. Mean Totals of Majors and Teacher Education Students, Fall 2013-Fall 2017
(from Table 7)

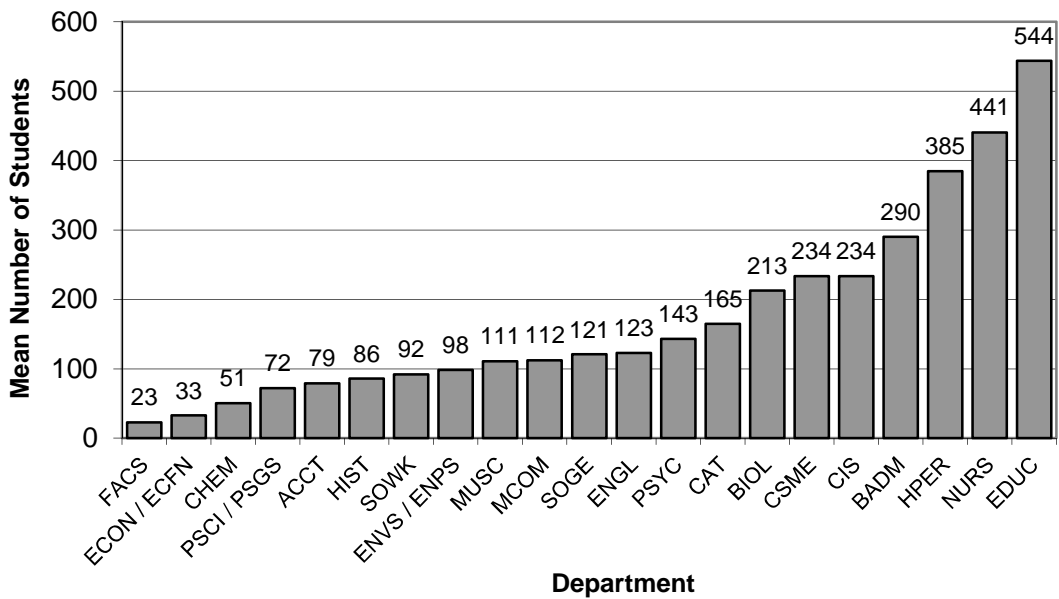


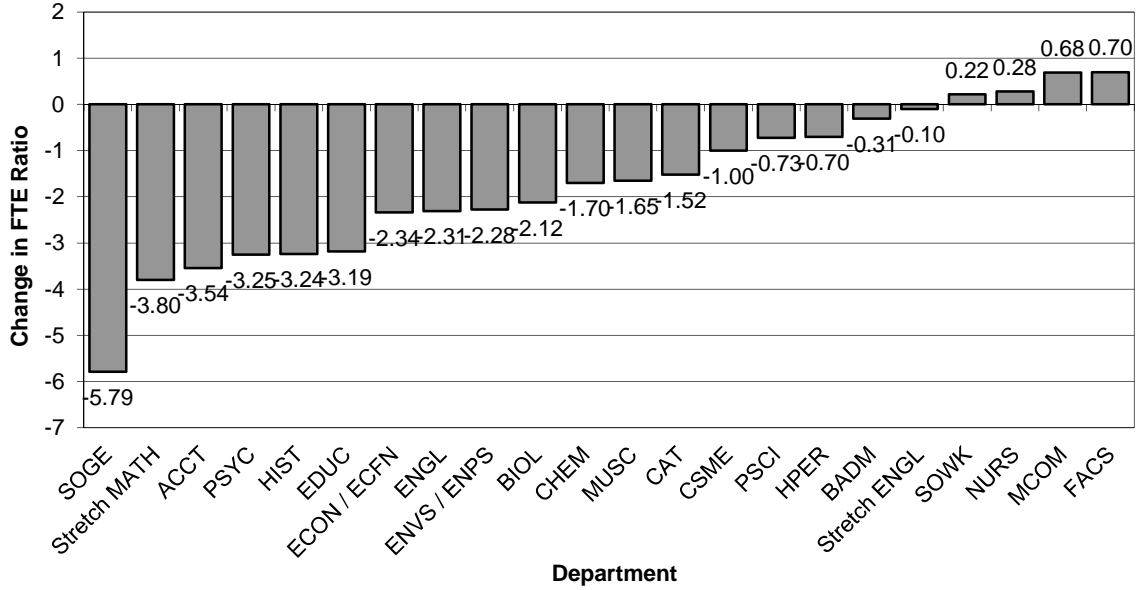
Table 8. FTE Student to FTE Faculty Ratios

Department	Fall 2013		Fall 2014		Fall 2015		Fall 2016		Fall 2017				Fall 2013-17	
	Ratio	Change	Ratio	Change	Ratio	Change	Ratio	Change	F-FTE	S-FTE	Ratio	Change	Mean Ratio	Change in Ratio
CAT	13.61	-0.28	13.12	-0.49	12.87	-0.25	12.48	-0.64	13.20	159.60	12.09	-0.39	12.83	-1.52
MCOM	13.21	0.14	13.66	0.44	13.63	-0.03	13.18	-0.47	6.74	93.67	13.90	0.72	13.51	0.68
ENGL	14.13	-2.63	14.04	-0.08	13.61	-0.44	12.95	-1.10	18.28	216.07	11.82	-1.13	13.31	-2.31
HIST	20.15	-1.54	18.89	-1.26	19.34	0.45	16.21	-2.69	7.19	121.60	16.91	0.71	18.30	-3.24
MUSC	9.28	-2.87	7.97	-1.31	7.47	-0.50	7.86	-0.11	12.57	95.87	7.63	-0.23	8.04	-1.65
<i>Arts and Humanities</i>	<i>13.95</i>	<i>-1.50</i>	<i>13.24</i>	<i>-0.71</i>	<i>12.95</i>	<i>-0.29</i>	<i>12.32</i>	<i>-0.92</i>	<i>57.98</i>	<i>686.81</i>	<i>11.85</i>	<i>-0.48</i>	<i>12.86</i>	<i>-2.11</i>
ACCT	18.52	1.91	16.86	-1.67	17.35	0.50	15.87	-0.99	2.75	41.20	14.98	-0.88	16.72	-3.54
BADM	16.41	-0.20	14.60	-1.81	17.29	2.69	16.54	1.94	9.25	149.00	16.11	-0.43	16.19	-0.31
ECON / ECFN	17.92	-3.51	15.60	-2.32	16.97	1.37	15.67	0.07	5.75	89.60	15.58	-0.08	16.35	-2.34
<i>Business</i>	<i>17.39</i>	<i>1.94</i>	<i>15.40</i>	<i>-1.99</i>	<i>17.19</i>	<i>1.79</i>	<i>16.11</i>	<i>0.71</i>	<i>17.75</i>	<i>279.80</i>	<i>15.76</i>	<i>-0.35</i>	<i>16.37</i>	<i>-1.62</i>
FACS	15.53	-3.81	18.21	2.68	17.81	-0.40	17.56	-0.65	3.57	57.93	16.23	-1.33	17.07	0.70
PSCI / PSGS	13.90	-5.43	15.50	1.60	16.51	1.00	12.68	-2.82	4.65	61.27	13.18	0.50	14.35	-0.73
PSYC	17.02	-3.12	15.76	-1.26	15.24	-0.52	15.54	-0.22	10.06	138.47	13.76	-1.77	15.46	-3.25
SOGE	19.26	-2.95	19.54	0.28	17.56	-1.98	14.47	-5.07	11.00	148.20	13.47	-1.00	16.86	-5.79
SOWK	14.31	1.15	12.94	-1.36	12.30	-0.64	16.36	3.41	3.25	47.20	14.52	-1.83	14.09	0.22
<i>Social & Behavioral Sci.</i>	<i>16.59</i>	<i>0.06</i>	<i>16.84</i>	<i>0.25</i>	<i>16.09</i>	<i>-0.75</i>	<i>14.99</i>	<i>-1.85</i>	<i>32.53</i>	<i>453.07</i>	<i>13.93</i>	<i>-1.07</i>	<i>15.69</i>	<i>-2.66</i>
EDUC	11.68	-0.52	11.35	-0.33	9.79	-1.56	8.97	-2.38	12.94	109.87	8.49	-0.48	10.05	-3.19
HPER	14.43	-2.89	15.06	0.63	15.30	0.24	12.99	-2.07	22.33	306.60	13.73	0.74	14.30	-0.70
NURS	22.77	4.11	25.11	2.34	24.38	-0.74	24.25	-0.86	6.75	155.60	23.05	-1.20	23.91	0.28
<i>Education & Prof. St.</i>	<i>15.17</i>	<i>-0.82</i>	<i>15.69</i>	<i>0.53</i>	<i>15.23</i>	<i>-0.46</i>	<i>13.63</i>	<i>-2.06</i>	<i>42.02</i>	<i>572.07</i>	<i>13.61</i>	<i>-0.02</i>	<i>14.67</i>	<i>-1.55</i>
BIOL	19.03	2.67	17.58	-1.45	18.63	1.05	17.42	-0.16	11.28	190.67	16.90	-0.51	17.91	-2.12
CHEM	19.38	-1.06	19.37	-0.01	19.25	-0.12	17.05	-2.32	6.03	106.60	17.68	0.63	18.55	-1.70
CSME	16.19	0.42	15.87	-0.32	15.52	-0.35	14.99	-0.89	15.72	238.80	15.19	0.20	15.55	-1.00
ENVS / ENPS	17.02	1.65	16.49	-0.54	16.95	0.46	15.37	-1.12	6.83	100.73	14.75	-0.62	16.11	-2.28
<i>Natural Sciences & M.</i>	<i>17.60</i>	<i>0.98</i>	<i>16.96</i>	<i>-0.64</i>	<i>17.19</i>	<i>0.23</i>	<i>16.03</i>	<i>-0.93</i>	<i>39.86</i>	<i>636.80</i>	<i>15.98</i>	<i>-0.05</i>	<i>16.75</i>	<i>-1.62</i>
Stretch English	11.30	1.38	9.18	-2.12	10.46	1.28	11.23	2.05	1.50	16.80	11.20	-0.03	10.67	-0.10
Stretch Math	20.12	2.74	17.90	-2.21	17.34	-0.57	16.76	-1.15	2.50	40.80	16.32	-0.44	17.69	-3.80
<i>Stretch</i>	<i>16.29</i>	<i>2.30</i>	<i>14.48</i>	<i>-1.81</i>	<i>14.79</i>	<i>0.31</i>	<i>14.83</i>	<i>0.35</i>	<i>4.00</i>	<i>57.60</i>	<i>14.40</i>	<i>-0.43</i>	<i>14.96</i>	<i>-1.89</i>
Shepherd University	15.68	1.02	15.27	-0.41	15.17	-0.10	14.17	-1.11	194.14	2686.15	13.84	-0.33	14.83	-1.85

General Explanation/Definitions.

1. The **ratio** is obtained by dividing the student FTE by the faculty FTE.
2. One faculty **FTE** (full-time equivalent) equals 12 hours of instructional responsibility and one student FTE equals 15 credit hours.
3. The annual **change** is the current year's ratio minus the prior year's ratio.
4. The **mean ratio** is the sum of the annual ratios divided by the number of years for which data are presented (five years).
5. The **change in ratio** is the current year's ratio minus the first year's ratio.
6. Numbers include undergraduate instruction only.

**Graph 8A: Change in Ratios
(FTE Students: FTE Faculty), 2013-2017**
(from Table 8)



**Graph 8B: Mean Ratios
(FTE Students: FTE Faculty), 2013-2017**
(from Table 8)

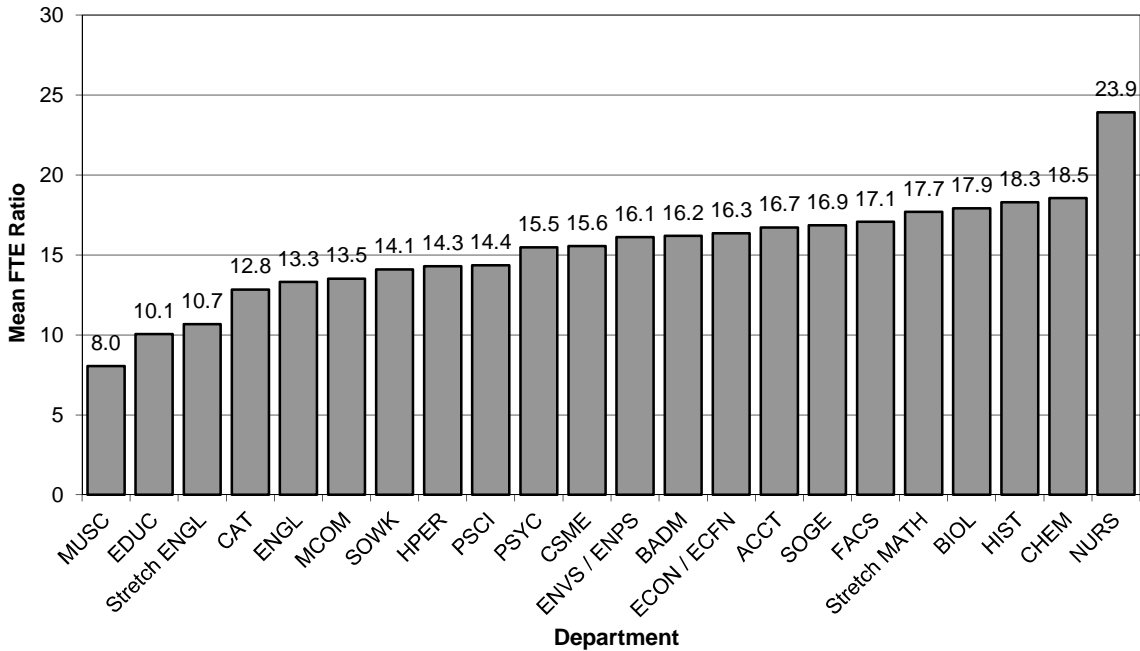


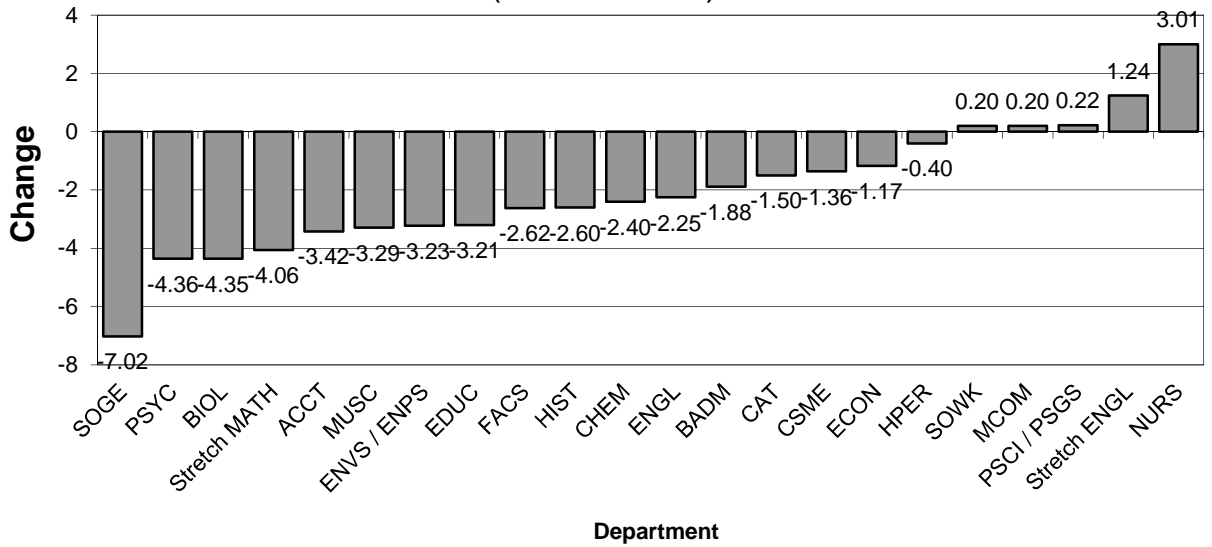
Table 9. Ratios of Student FTE Generated by Full-Time Faculty Only to Full-Time Faculty FTE

Department	Fall 2013			Fall 2014			Fall 2015			Fall 2016			Fall 2017				Fall 2013-17		
	Ratio	% Chg	A. Chg.	Ratio	% Chg	A. Chg.	Ratio	% Chg	A. Chg.	Ratio	% Chg	A. Chg.	F-FTE	S-FTE	Ratio	% Chg	A. Chg.	Mean Ratio	Change in Ratio
CAT	11.99	-3.4%	-0.42	11.10	-7.4%	-0.89	11.93	-0.5%	-0.06	10.66	-4.0%	-0.44	8.98	94.20	10.49	-1.6%	-0.17	11.23	-1.50
MCOM	13.20	-0.4%	-0.05	14.29	8.3%	1.09	12.71	-3.7%	-0.49	11.36	-20.5%	-2.94	3.99	53.47	13.40	18.0%	2.04	12.99	0.20
ENGL	13.60	-4.6%	-0.65	13.64	0.2%	0.03	13.75	1.1%	0.14	13.11	-3.9%	-0.53	12.28	139.42	11.35	-13.4%	-1.76	13.09	-2.25
HIST	19.92	-9.1%	-1.99	19.10	-4.1%	-0.82	16.67	-16.3%	-3.25	14.67	-23.2%	-4.43	5.00	86.60	17.32	18.0%	2.65	17.54	-2.60
MUSC	12.06	-12.9%	-1.78	11.23	-6.9%	-0.83	9.59	-20.5%	-2.48	10.27	-8.6%	-0.96	7.05	61.87	8.78	-14.6%	-1.49	10.39	-3.29
<i>Arts & Humanities</i>	14.07	-8.0%	-1.22	13.31	-5.4%	-0.76	13.01	-7.5%	-1.06	12.24	-8.1%	-1.08	37.30	435.56	11.68	-4.6%	-0.56	12.86	-2.39
ACCT	18.40	3.8%	0.68	16.33	-11.2%	-2.07	18.47	0.4%	0.07	16.80	2.9%	0.47	2.75	41.20	14.98	-10.8%	-1.82	17.00	-3.42
BADM	16.88	1.4%	0.23	14.64	-13.3%	-2.24	15.76	-6.6%	-1.12	14.60	-0.2%	-0.04	4.00	60.00	15.00	2.7%	0.40	15.38	-1.88
ECON / ECFN	16.98	-10.5%	-2.00	14.28	-15.9%	-2.70	16.14	-4.9%	-0.84	15.56	8.9%	1.28	4.25	67.20	15.81	1.6%	0.26	15.75	-1.17
<i>Business</i>	17.26	-2.6%	-0.46	14.89	-13.7%	-2.36	16.53	11.0%	1.64	15.55	-5.9%	-0.97	11.00	168.40	15.31	-1.6%	-0.24	15.91	-1.95
FACS	16.01	-18.9%	-3.74	15.07	-5.9%	-0.95	18.00	12.4%	1.99	16.00	6.2%	0.94	1.24	16.60	13.39	-16.3%	-2.61	15.69	-2.62
PSCI / PSGS	12.23	-36.3%	-6.97	16.04	31.1%	3.81	16.51	34.9%	4.27	12.52	-22.0%	-3.52	3.65	45.47	12.46	-0.5%	-0.06	13.95	0.22
PSYC	16.77	-3.7%	-0.65	14.82	-11.6%	-1.94	12.78	-23.8%	-3.99	13.14	-11.4%	-1.69	5.81	72.07	12.40	-5.6%	-0.73	13.98	-4.36
SOGE	20.28	-6.0%	-1.29	18.82	-7.2%	-1.46	17.47	-13.9%	-2.81	13.26	-29.6%	-5.56	7.00	92.80	13.26	0.0%	0.00	16.61	-7.02
SOWK	13.98	-2.4%	-0.34	13.21	-5.5%	-0.78	11.91	-14.8%	-2.07	15.98	21.0%	2.77	2.75	39.00	14.18	-11.2%	-1.80	13.85	0.20
<i>Social & Behavioral Sci.</i>	16.13	-13.2%	-2.44	15.99	-0.9%	-0.14	15.29	-5.3%	-0.85	13.57	-15.1%	-2.42	20.45	265.94	13.00	-4.2%	-0.57	14.80	-3.13
EDUC	12.02	-9.6%	-1.27	11.66	-3.0%	-0.36	10.22	-15.0%	-1.80	9.33	-20.0%	-2.33	11.44	100.87	8.82	-5.5%	-0.51	10.41	-3.21
HPER	13.95	-21.9%	-3.92	15.32	9.8%	1.37	15.03	7.7%	1.08	11.05	-27.9%	-4.27	16.25	220.20	13.55	22.6%	2.50	13.78	-0.40
NURS	24.23	22.3%	4.42	24.25	0.1%	0.03	27.05	11.6%	2.82	28.68	18.3%	4.43	5.42	147.60	27.23	-5.1%	-1.45	26.29	3.01
<i>Education & Prof. St.</i>	15.79	-5.5%	-0.91	16.18	2.5%	0.39	16.20	2.6%	0.41	13.81	-14.6%	-2.37	33.11	468.67	14.15	2.5%	0.34	15.23	-1.64
BIOL	19.07	20.7%	3.27	15.65	-18.0%	-3.43	17.22	-9.7%	-1.85	16.04	2.5%	0.39	7.12	104.80	14.72	-8.2%	-1.32	16.54	-4.35
CHEM	19.71	-13.3%	-3.01	19.75	0.2%	0.05	20.20	2.5%	0.50	17.27	-12.6%	-2.48	4.53	78.40	17.31	0.2%	0.04	18.85	-2.40
CSME	14.43	1.3%	0.19	14.07	-2.5%	-0.36	13.80	-4.4%	-0.63	12.81	-9.0%	-1.27	11.74	153.40	13.07	2.0%	0.26	13.64	-1.36
ENVS / ENPS	17.86	4.3%	0.74	16.17	-9.5%	-1.69	17.24	-3.5%	-0.62	15.32	-5.3%	-0.85	4.92	72.00	14.63	-4.5%	-0.68	16.24	-3.23
<i>Natural Sciences & M.</i>	17.31	3.9%	0.64	15.80	-8.7%	-1.51	16.38	-5.4%	-0.94	14.84	-6.1%	-0.96	28.31	408.60	14.43	-2.7%	-0.40	15.75	-2.88
Stretch English	10.00	153.7%	6.06	9.33	-6.7%	-0.67	10.27	2.7%	0.27	11.41	22.3%	2.08	0.83	9.33	11.24	-1.5%	-0.17	10.45	1.24
Stretch Math	20.24	13.9%	2.46	17.96	-11.2%	-2.28	16.23	-19.8%	-4.01	16.39	-8.8%	-1.58	1.50	24.27	16.18	-1.3%	-0.21	17.40	-4.06
<i>Stretch</i>	14.64	-8.6%	-1.38	14.73	0.6%	0.09	12.97	-11.4%	-1.67	13.90	-5.7%	-0.83	2.33	33.60	14.42	3.8%	0.52	14.13	-0.22
Shepherd University	15.84	-5.1%	-0.85	15.12	-4.5%	-0.72	15.17	-4.2%	-0.67	13.71	-9.4%	-1.41	132.50	1780.77	13.44	-2.0%	-0.27	14.66	-2.40

General Explanation/Definitions.

1. The **ratio** is obtained by dividing the student FTE generated by full-time faculty by the full-time faculty FTE. For full-time faculty, one faculty FTE (full-time equivalent) equals 12 hours of instructional responsibility and one student FTE equals 15 credit hours.
2. The **% change** is the difference between the ratio in two consecutive years divided by the ratio of the earlier year.
3. The **annual change** is the current year's ratio minus the prior year's ratio.
4. The **mean ratio** is the sum of the annual ratios divided by the number of years for which data are presented (five years).
5. The **change in ratio** is the current year's ratio minus the first year's ratio.
6. Numbers include undergraduate instruction only.

**Graph 9A: Change in FTE Ratios
(Student FTE: Faculty FTE for Full-Time Faculty),
2013-2017
(from Table 9)**



**Graph 9B: Mean FTE Ratios
Student FTE: Faculty FTE for Full-Time Faculty),
2013-2017
(from Table 9)**

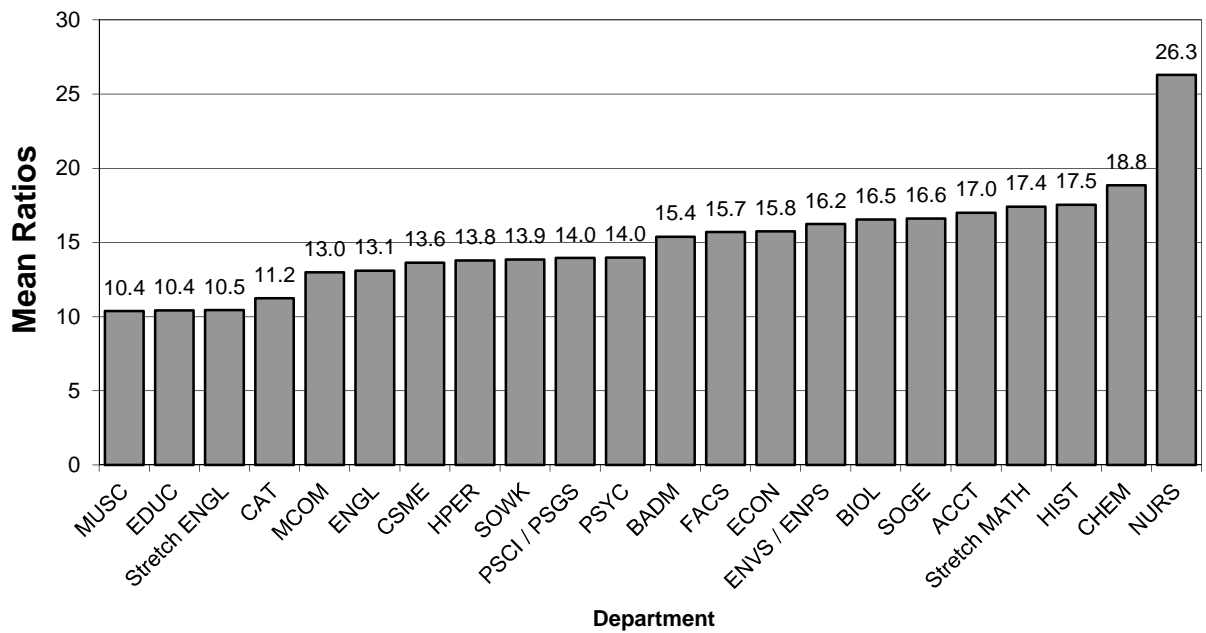


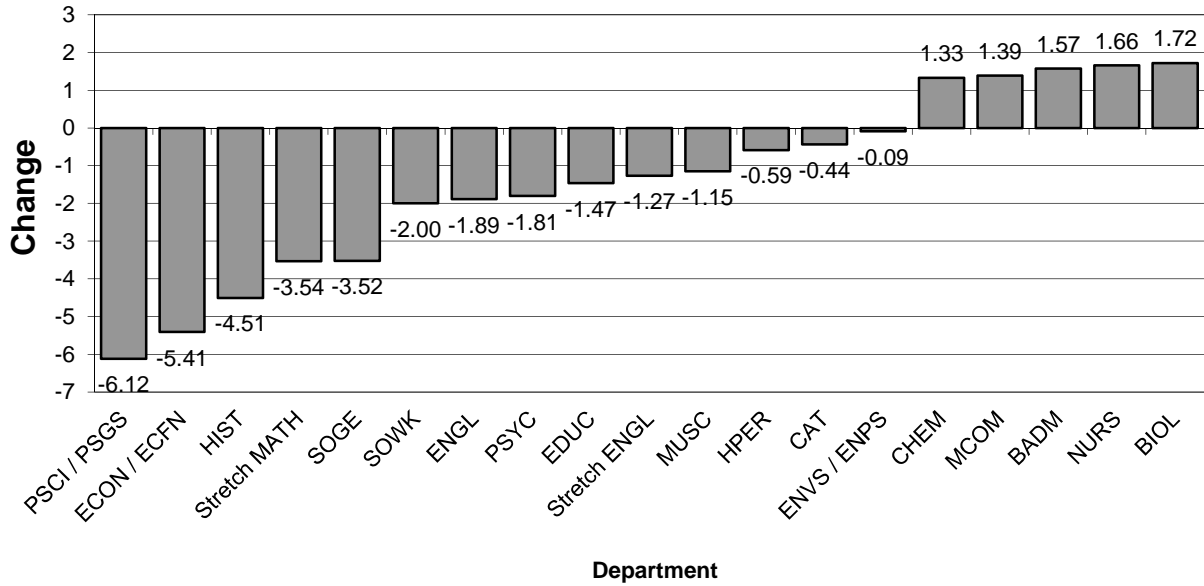
Table 10. Ratios of Student FTE Generated by Part-Time Faculty Only to Part-Time Faculty FTE

Department	Fall 2013			Fall 2014			Fall 2015			Fall 2016			Fall 2017			Fall 2013-17			
	Ratio	% Chg	A. Chg.	Ratio	% Chg	A. Chg.	Ratio	% Chg	A. Chg.	Ratio	% Chg	A. Chg.	F-FTE	S-FTE	Ratio	% Chg	A. Chg.	Mean Ratio	Change in Ratio
CAT	15.90	-3.2%	-0.52	15.93	0.2%	0.03	13.85	-12.9%	-2.05	16.03	0.6%	0.10	4.23	65.40	15.46	-3.5%	-0.57	15.43	-0.44
MCOM	13.23	-13.0%	-1.97	12.97	-2.0%	-0.26	14.83	12.1%	1.60	16.00	23.3%	3.03	2.75	40.20	14.62	-8.6%	-1.38	14.33	1.39
ENGL	14.66	-9.3%	-1.51	14.53	-0.9%	-0.13	13.39	-8.7%	-1.27	12.68	-12.7%	-1.85	6.00	76.65	12.78	0.7%	0.09	13.61	-1.89
HIST	20.49	-14.7%	-3.52	18.75	-8.5%	-1.74	22.49	9.8%	2.01	19.51	4.1%	0.76	2.19	35.00	15.98	-18.1%	-3.53	19.44	-4.51
MUSC	7.31	-7.3%	-0.58	5.22	-28.5%	-2.08	6.02	-17.7%	-1.29	6.36	21.8%	1.14	5.52	34.00	6.16	-3.2%	-0.20	6.21	-1.15
<i>Arts & Humanities</i>	13.82	-7.1%	-1.06	13.18	-4.7%	-0.64	12.89	-6.7%	-0.93	12.44	-5.6%	-0.74	20.69	251.25	12.14	-2.4%	-0.29	12.89	-1.68
ACCT	19.20	N/A	N/A	20.00	4.2%	0.80	11.20	-41.7%	-8.00	5.60	-72.0%	-14.40	0.00	0.00	N/A	N/A	N/A	14.00	N/A
BADM	15.38	-25.2%	-5.18	14.53	-5.5%	-0.84	20.24	31.6%	4.86	18.09	24.5%	3.56	5.25	89.00	16.95	-6.3%	-1.14	17.04	1.57
ECON / ECFN	20.34	6.6%	1.26	20.00	-1.7%	-0.34	19.33	-5.0%	-1.01	16.00	-20.0%	-4.00	1.50	22.40	14.93	-6.7%	-1.07	18.12	-5.41
<i>Business</i>	17.73	-11.1%	-2.22	16.72	-5.7%	-1.01	18.93	13.2%	2.21	17.09	-9.7%	-1.84	6.75	111.40	16.50	-3.4%	-0.58	17.39	-1.23
FACS	13.73	21.5%	2.43	21.64	57.6%	7.91	17.27	25.7%	3.53	18.50	-14.5%	-3.14	2.33	41.33	17.74	-4.1%	-0.76	17.77	4.01
PSCI / PSGS	21.92	16.6%	3.12	10.40	-52.6%	-11.52	N/A	N/A	N/A	13.60	N/A	N/A	1.00	15.80	15.80	16.2%	2.20	15.43	-6.12
PSYC	17.43	-3.9%	-0.70	17.41	-0.1%	-0.01	19.71	13.1%	2.29	19.49	11.9%	2.07	4.25	66.40	15.62	-19.8%	-3.86	17.93	-1.81
SOGE	17.37	-25.4%	-5.92	20.92	20.4%	3.55	17.73	2.1%	0.36	16.00	-23.5%	-4.92	4.00	55.40	13.85	-13.4%	-2.15	17.18	-3.52
SOWK	18.40	N/A	N/A	9.60	-47.8%	-8.80	14.40	-21.7%	-4.00	20.00	108.3%	10.40	0.50	8.20	16.40	-18.0%	-3.60	15.76	-2.00
<i>Social & Behavioral Sci.</i>	17.78	-13.2%	-2.70	18.88	6.2%	1.11	18.36	3.3%	0.58	17.46	-7.5%	-1.42	12.08	187.13	15.49	-11.3%	-1.97	17.59	-2.28
EDUC	7.47	-2.5%	-0.19	10.57	41.5%	3.10	8.14	9.0%	0.67	7.41	-29.9%	-3.15	1.50	9.00	6.00	-19.1%	-1.41	7.92	-1.47
HPER	14.80	-2.0%	-0.30	14.87	0.5%	0.08	15.45	4.4%	0.65	14.95	0.5%	0.07	6.08	86.40	14.21	-4.9%	-0.74	14.86	-0.59
NURS	4.36	-75.7%	-13.56	29.38	573.8%	25.02	7.47	71.3%	3.11	9.45	-67.8%	-19.93	1.33	8.00	6.02	-36.3%	-3.43	11.33	1.66
<i>Education & Prof. St.</i>	14.07	-2.2%	-0.31	15.03	6.8%	0.96	13.93	-1.0%	-0.14	13.32	-11.4%	-1.71	8.91	103.40	11.60	-12.9%	-1.71	13.59	-2.46
BIOL	18.88	-3.8%	-0.75	24.18	28.1%	5.30	21.94	16.2%	3.07	20.32	-16.0%	-3.86	4.17	85.87	20.59	1.3%	0.27	21.18	1.72
CHEM	17.47	1.6%	0.27	18.44	5.5%	0.97	16.98	-2.8%	-0.49	16.50	-10.5%	-1.93	1.50	28.20	18.80	13.9%	2.30	17.64	1.33
CSME	19.32	-6.6%	-1.38	19.37	0.3%	0.05	18.90	-2.2%	-0.42	20.54	6.0%	1.17	3.99	85.40	21.40	4.2%	0.86	19.91	2.08
ENVS / ENPS	15.06	6.3%	0.89	17.84	18.5%	2.78	16.00	6.3%	0.94	15.52	-13.0%	-2.32	1.92	28.73	14.96	-3.6%	-0.56	15.88	-0.09
<i>Natural Sciences & M.</i>	18.31	-3.4%	-0.65	19.98	9.1%	1.66	19.09	4.2%	0.77	19.01	-4.8%	-0.97	11.58	228.20	19.71	3.7%	0.70	19.22	1.39
Stretch English	12.42	19.9%	2.06	9.00	-27.5%	-3.42	10.75	-13.5%	-1.67	10.94	21.6%	1.94	0.67	7.47	11.15	1.9%	0.21	10.85	-1.27
Stretch Math	20.07	17.2%	2.94	17.67	-12.0%	-2.40	17.80	-11.3%	-2.27	16.84	-4.7%	-0.82	1.00	16.53	16.53	-1.9%	-0.31	17.78	-3.54
<i>Stretch</i>	17.24	29.3%	3.91	14.07	-18.4%	-3.17	16.03	-7.0%	-1.21	15.48	10.0%	1.41	1.67	24.00	14.37	-7.2%	-1.11	15.44	-2.87
Shepherd University	15.41	-5.5%	-0.89	15.51	0.7%	0.10	15.16	-1.6%	-0.25	14.94	-3.7%	-0.57	61.68	905.38	14.68	-1.8%	-0.26	15.14	-0.73

General Explanation/Definitions.

1. The **ratio** is obtained by dividing the student FTE generated by part-time faculty by the part-time faculty FTE. For part-time faculty, one faculty FTE (full-time equivalent) equals 15 hours of instructional responsibility and one student FTE equals 15 credit hours.
2. The **% change** is the difference between the ratio in two consecutive years divided by the ratio of the earlier year.
3. The **annual change** is the current year's ratio minus the prior year's ratio.
4. The **mean ratio** is the sum of the annual ratios divided by the number of years for which data are presented (five years).
5. The **change in ratio** is the current year's ratio minus the first year's ratio.
6. Numbers include undergraduate instruction only.

**Graph 10A: Change in FTE Ratios
(Student FTE: Faculty FTE for Part-Time Faculty),
2013-2017
(from Table 10)**



**Graph 10B: Mean FTE Ratios
(Student FTE: Faculty FTE for Part-Time Faculty),
2013-2017
(from Table 10)**

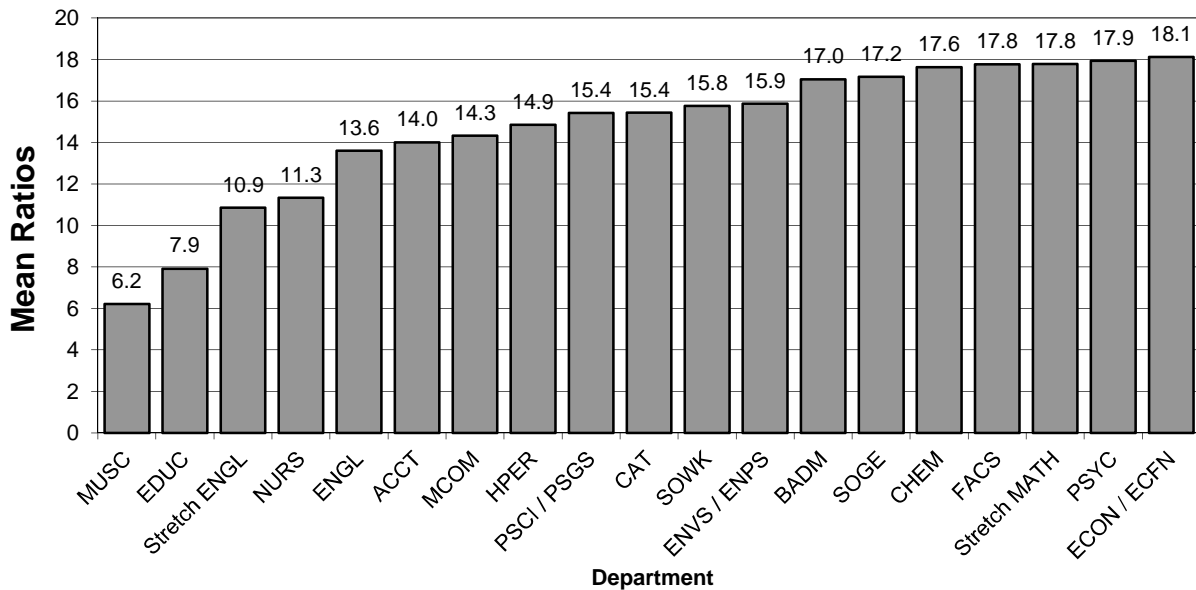


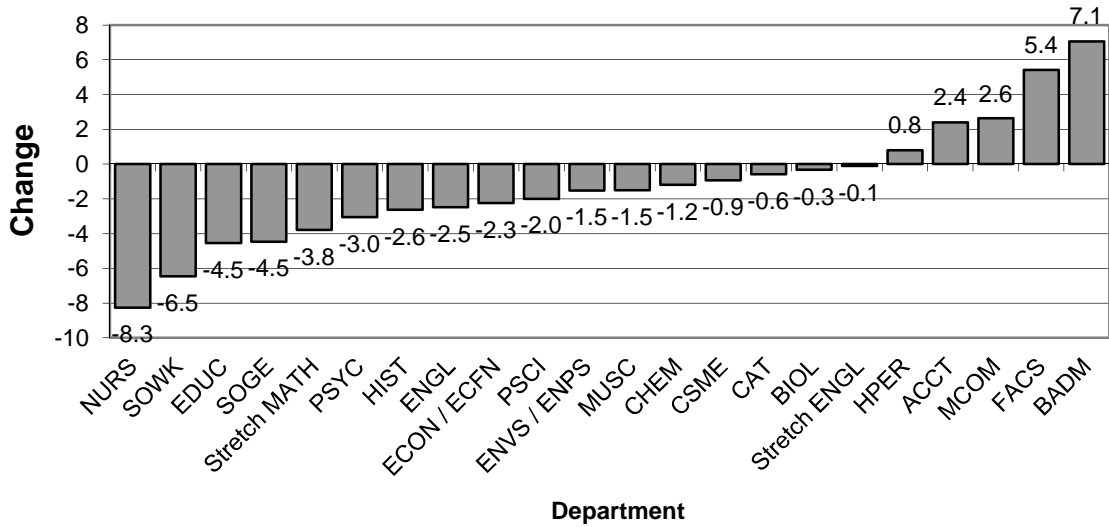
Table 11. Student-to-Faculty FTE Ratios in Lower Level Courses

Department	Fall 2013			Fall 2014			Fall 2015			Fall 2016			Fall 2017					Fall 2013-17	
	Ratio	% Chg.	A. Chg.	Ratio	% Chg.	A. Chg.	Ratio	% Chg.	A. Chg.	Ratio	% Chg.	A. Chg.	Faculty FTE	Student FTE	Ratio	% Chg.	A. Chg.	Mean Ratio	Change in Ratio
CAT	15.01	-0.05	-0.74	15.37	0.02	0.35	13.92	-0.07	-1.09	15.11	0.09	1.19	7.25	104.60	14.43	-0.05	-0.68	14.77	-0.58
MCOM	13.29	-0.15	-2.35	14.11	0.06	0.82	15.80	0.19	2.51	15.60	-0.01	-0.20	3.24	51.60	15.93	0.02	0.33	14.95	2.63
ENGL	15.20	-0.06	-0.90	15.11	-0.01	-0.09	14.37	-0.05	-0.83	13.69	-0.05	-0.68	14.20	180.60	12.72	-0.07	-0.97	14.22	-2.49
HIST	22.67	-0.09	-2.27	18.99	-0.16	-3.69	21.44	-0.05	-1.23	18.86	-0.12	-2.59	4.32	86.60	20.05	0.06	1.19	20.40	-2.63
MUSC	10.67	-0.10	-1.14	10.00	-0.06	-0.67	9.73	-0.09	-0.94	8.68	-0.11	-1.05	5.67	52.00	9.17	0.06	0.49	9.65	-1.50
<i>Arts & Humanities</i>	15.64	-0.07	-1.25	14.88	-0.05	-0.76	14.80	-0.05	-0.84	14.13	-0.05	-0.67	34.68	475.40	13.71	-0.03	-0.42	14.63	-1.93
ACDT	17.20	-0.10	-1.87	17.47	0.02	0.27	15.60	-0.09	-1.60	13.12	-0.16	-2.48	1.00	19.60	19.60	0.49	6.48	16.60	2.40
BADM	19.73	0.04	0.80	36.00	0.82	16.27	48.80	1.47	29.07	32.00	-0.34	-16.80	0.50	13.40	26.80	-0.16	-5.20	32.67	7.07
ECON / ECFN	18.90	-0.10	-2.14	18.50	-0.02	-0.40	18.24	-0.04	-0.66	16.70	-0.08	-1.54	4.00	66.60	16.65	0.00	-0.05	17.80	-2.25
<i>Business</i>	18.59	-0.09	-1.75	18.99	0.02	0.40	18.91	0.00	-0.08	16.58	-0.12	-2.33	5.50	99.60	18.11	0.09	1.53	18.24	-0.48
FACS	12.25	-0.3%	-0.04	21.53	75.7%	9.28	19.70	60.8%	7.45	19.05	-11.5%	-2.48	1.83	32.33	17.67	-10.3%	-1.38	18.04	5.41
PSCI / PSGS	18.13	-0.02	-0.37	15.51	-0.14	-2.63	18.33	0.01	0.19	17.40	-0.05	-0.93	2.33	37.60	16.14	-0.07	-1.26	17.10	-2.00
PSYC	17.87	-0.06	-1.08	16.18	-0.09	-1.69	14.86	-0.17	-3.01	14.82	0.00	-0.04	4.97	73.67	14.82	0.00	0.00	15.71	-3.04
SOGE	23.24	-0.09	-2.40	22.40	-0.04	-0.84	20.21	-0.13	-3.03	19.24	-0.05	-0.97	4.75	89.20	18.78	-0.02	-0.46	20.77	-4.46
SOWK	16.97	-0.12	-2.21	9.91	-0.42	-7.06	16.36	-0.04	-0.61	17.97	0.10	1.61	0.33	3.47	10.52	-0.41	-7.45	14.35	-6.45
<i>Social & Behavioral Sci.</i>	19.17	-7.8%	-1.63	18.57	-3.1%	-0.60	17.78	-7.3%	-1.40	17.24	-7.1%	-1.33	14.21	236.27	16.63	-6.5%	-0.62	17.88	-2.55
EDUC	16.62	-0.05	-0.93	15.73	-0.05	-0.89	13.15	-0.21	-3.47	11.07	-0.16	-2.09	1.17	14.13	12.08	0.09	1.01	13.73	-4.54
HPER	16.82	-0.05	-0.87	18.18	0.08	1.35	18.41	0.09	1.58	15.53	-0.16	-2.88	10.33	182.13	17.63	0.14	2.10	17.32	0.81
NURS	8.25	-0.33	-4.15	13.02	0.58	4.77	N/A	-0.58	4.15	N/A	N/A	N/A	0.00	0.00	N/A	N/A	N/A	10.64	-8.25
<i>Education & Prof. St.</i>	16.43	-0.06	-1.08	17.75	0.08	1.32	17.84	0.09	1.40	15.05	-0.16	-2.79	11.50	196.26	17.07	0.13	2.02	16.83	0.63
BIOL	19.77	0.06	1.04	18.92	-0.04	-0.85	19.68	0.00	-0.09	18.04	-0.08	-1.64	7.08	137.60	19.44	0.08	1.40	19.17	-0.33
CHEM	20.44	-0.02	-0.33	19.66	-0.04	-0.78	21.02	0.03	0.58	17.73	-0.16	-3.29	4.16	80.07	19.25	0.09	1.52	19.62	-1.20
CSME	18.27	1.0%	0.18	17.79	-2.6%	-0.48	17.81	-2.5%	-0.46	17.21	-3.4%	-0.61	9.41	163.07	17.33	0.7%	0.12	17.68	-0.94
ENVS / ENPS	16.44	-0.01	-0.13	15.57	-0.05	-0.87	16.62	0.01	0.18	15.83	-0.05	-0.79	3.67	54.73	14.91	-0.06	-0.92	15.88	-1.53
<i>Natural Sciences & M.</i>	18.81	0.02	0.36	18.00	-0.04	-0.81	18.70	-0.01	-0.11	17.27	-0.08	-1.43	24.32	435.47	17.91	0.04	0.63	18.14	-0.91
Stretch English	11.30	14.0%	1.38	9.18	-18.8%	-2.12	10.46	-7.5%	-0.84	11.23	7.3%	0.76	1.50	16.80	11.20	-0.2%	-0.03	10.67	-0.10
Stretch Math	20.12	15.8%	2.74	17.90	-11.0%	-2.21	17.34	-13.8%	-2.78	16.76	-3.3%	-0.58	2.50	40.80	16.32	-2.6%	-0.44	17.69	-3.80
<i>Stretch</i>	16.29	16.5%	2.30	14.48	-11.1%	-1.81	14.79	-9.2%	-1.51	14.83	0.3%	0.05	4.00	57.60	14.40	-2.9%	-0.43	14.96	-1.89
Shepherd University	17.20	-3.8%	-0.69	16.78	-2.5%	-0.42	16.82	-2.2%	-0.38	15.66	-6.6%	-1.11	94.21	1500.60	15.93	1.7%	0.26	16.48	-1.27

General Explanation/Definitions.

1. The **ratio** is obtained by dividing the student FTE by the faculty FTE .
2. **Lower level** includes 100 and 200 level courses.
3. The **% change** is the difference between the ratio in two consecutive years divided by the ratio of the earlier year.
4. The **annual change** (A. Chg.) is the current year's ratio minus the prior year's ratio.
5. The **mean ratio** is the sum of the annual ratios divided by the number of years for which data are presented (five years).
6. The **change in ratio** is the current year's ratio minus the earliest year's ratio.
7. Numbers include undergraduate instruction only.

Graph 11A: Change in Student FTE to Faculty FTE Ratios in Lower Level Courses, 2013 - 2017
(from Table 11)



Graph 11B: Mean Student FTE to Faculty FTE Ratios in Lower Level Courses, 2013 - 2017
(from Table 11)

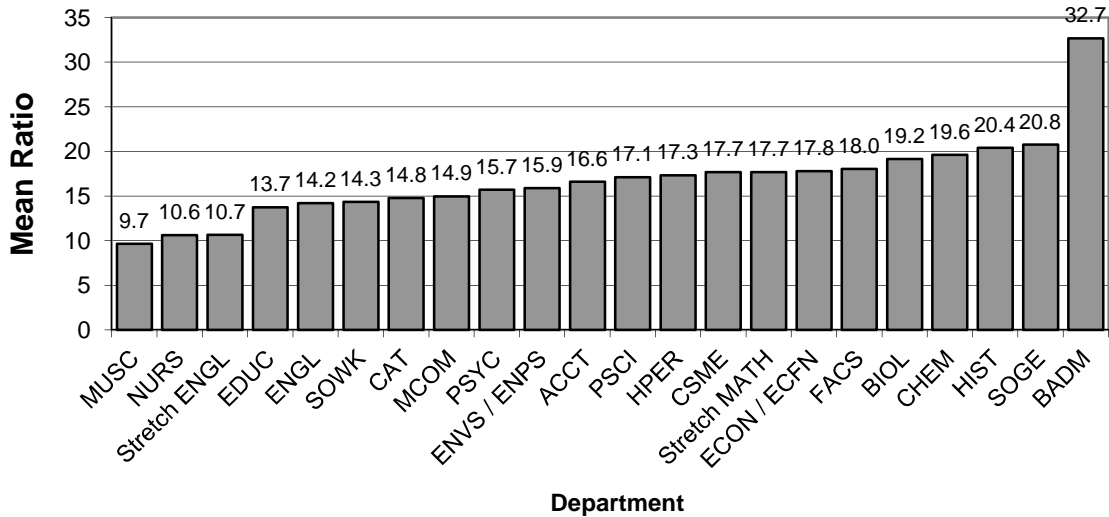


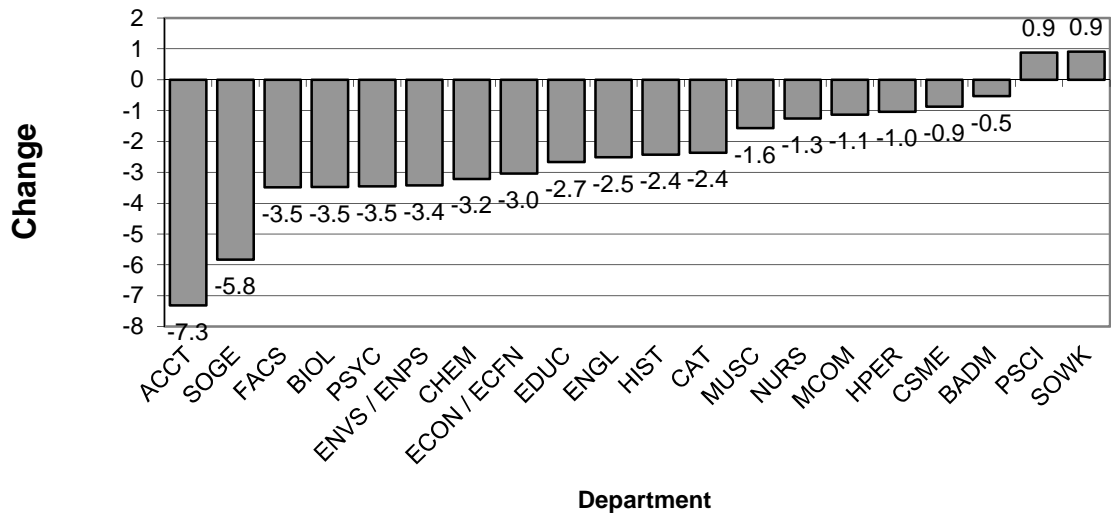
Table 12. Student-to-Faculty FTE Ratios in Upper Level Courses

Department	Fall 2013			Fall 2014			Fall 2015			Fall 2016			Fall 2017			Fall 2013-17			
	Ratio	% Chg.	A. Chg.	Ratio	% Chg.	A. Chg.	Ratio	% Chg.	A. Chg.	Ratio	% Chg.	A. Chg.	Faculty FTE	Student FTE	Ratio	% Chg.	A. Chg.	Mean Ratio	Change in Ratio
CAT	11.61	-0.04	-0.52	10.62	-0.09	-1.00	11.68	0.01	0.07	9.61	-0.09	-1.00	5.95	55.00	9.24	-0.04	-0.37	10.55	-2.37
MCOM	13.16	0.02	0.26	13.38	0.02	0.22	12.18	-0.07	-0.98	11.84	-0.12	-1.54	3.50	42.07	12.02	0.02	0.18	12.51	-1.14
ENGL	11.21	-0.14	-1.82	10.58	-0.06	-0.63	11.45	0.02	0.25	10.61	0.00	0.03	4.08	35.47	8.69	-0.18	-1.91	10.51	-2.51
HIST	14.67	-0.11	-1.88	18.70	0.27	4.03	14.75	0.01	0.08	11.47	-0.39	-7.24	2.86	35.00	12.24	0.07	0.77	14.37	-2.43
MUSC	7.93	-0.04	-0.33	6.18	-0.22	-1.75	5.21	-0.34	-2.72	7.09	0.15	0.91	6.90	43.87	6.36	-0.10	-0.73	6.55	-1.57
<i>Arts & Humanities</i>	11.25	-0.06	-0.67	10.81	-0.04	-0.44	10.24	-0.09	-1.01	9.77	-0.10	-1.04	23.29	211.41	9.08	-0.07	-0.69	10.23	-2.17
ACCT	19.66	0.19	3.09	16.40	-0.17	-3.26	18.86	-0.04	-0.80	17.83	0.09	1.43	1.75	21.60	12.34	-0.31	-5.49	17.02	-7.31
BADM	16.03	-0.10	-1.77	13.91	-0.13	-2.12	16.17	0.01	0.14	16.04	0.15	2.13	8.75	135.60	15.50	-0.03	-0.55	15.53	-0.53
ECON / ECFN	16.18	0.10	1.48	10.96	-0.32	-5.22	14.60	-0.10	-1.58	13.60	0.24	2.64	1.75	23.00	13.14	-0.03	-0.46	13.70	-3.03
<i>Business</i>	16.67	-0.02	-0.36	13.71	-0.18	-2.95	16.31	0.19	2.60	15.89	-0.03	-0.42	12.25	180.20	14.71	-0.07	-1.18	15.46	-1.96
FACS	18.20	-11.0%	-2.26	15.17	-16.7%	-3.04	15.79	-13.2%	-2.41	16.57	9.2%	1.40	1.74	25.60	14.71	-11.2%	-1.85	16.09	-3.49
PSCI / PSGS	9.37	-0.55	-11.56	15.50	0.65	6.13	14.00	0.49	4.63	9.53	-0.38	-5.97	2.31	23.67	10.25	0.07	0.71	11.73	0.88
PSYC	16.21	-0.01	-0.21	15.33	-0.05	-0.88	15.69	-0.03	-0.52	16.35	0.07	1.02	5.08	64.80	12.76	-0.22	-3.60	15.27	-3.45
SOGE	15.27	-0.19	-3.54	16.36	0.07	1.09	14.59	-0.04	-0.68	11.04	-0.33	-5.32	6.25	59.00	9.44	-0.14	-1.60	13.34	-5.83
SOWK	14.07	0.02	0.26	13.31	-0.05	-0.76	11.87	-0.16	-2.20	16.19	0.22	2.88	2.92	43.73	14.98	-0.08	-1.22	14.08	0.91
<i>Social & Behavioral Sci.</i>	14.45	-18.1%	-3.19	15.23	5.4%	0.78	14.45	0.0%	0.00	13.36	-12.3%	-1.87	18.30	216.80	11.85	-11.3%	-1.51	13.87	-2.60
EDUC	10.79	-0.02	-0.25	10.79	0.00	0.00	9.33	-0.13	-1.46	8.68	-0.20	-2.11	11.78	95.73	8.13	-0.06	-0.55	9.54	-2.66
HPER	11.41	-0.19	-2.76	11.63	0.02	0.22	11.49	0.01	0.08	10.42	-0.10	-1.21	12.00	124.47	10.37	0.00	-0.05	11.07	-1.04
NURS	24.31	0.24	4.72	25.81	0.06	1.50	24.38	0.00	0.06	24.25	-0.06	-1.56	6.75	155.60	23.05	-0.05	-1.20	24.36	-1.26
<i>Education & Prof. St.</i>	14.38	-0.02	-0.27	14.75	0.03	0.36	13.97	-0.03	-0.41	12.98	-0.12	-1.77	30.53	375.80	12.31	-0.05	-0.67	13.68	-2.07
BIOL	16.11	0.20	2.64	14.49	-0.10	-1.62	16.31	0.01	0.20	15.91	0.10	1.42	4.20	53.07	12.64	-0.21	-3.27	15.09	-3.47
CHEM	17.40	-0.11	-2.10	18.79	0.08	1.39	16.49	-0.05	-0.90	15.72	-0.16	-3.07	1.87	26.53	14.19	-0.10	-1.53	16.52	-3.21
CSME	12.86	-13.2%	-1.96	12.60	-2.0%	-0.26	12.10	-0.06	-0.76	11.91	-0.05	-0.69	6.32	75.73	11.98	0.01	0.07	12.29	-0.88
ENVS / ENPS	17.94	0.11	1.76	18.04	0.01	0.10	17.41	-2.9%	-0.52	14.58	-19.1%	-3.45	3.17	46.00	14.51	-0.5%	-0.07	16.50	-3.43
<i>Natural Sciences & M.</i>	15.14	-0.03	-0.41	15.01	-0.01	-0.13	14.69	-3.0%	-0.45	13.85	-7.7%	-1.16	15.56	201.33	12.94	-6.6%	-0.91	14.33	-2.20
Shepherd University	13.86	-0.06	-0.89	13.67	-0.01	-0.19	13.41	-3.3%	-0.46	12.70	-7.1%	-0.97	99.93	1185.54	11.86	-6.6%	-0.84	13.10	-2.00

General Explanation/Definitions.

1. The **ratio** is obtained by dividing the student FTE by the faculty FTE.
2. **Upper level** includes 300 and 400 level courses.
3. The **% change** is the difference between the ratio in two consecutive years divided by the ratio of the earlier year.
4. The **annual change** (A. Chg.) is the current year's ratio minus the prior year's ratio.
5. The **mean ratio** is the sum of the annual ratios divided by the number of years for which data are presented (five years).
6. The **change in ratio** is the current year's ratio minus the earliest year's ratio.
7. Numbers include undergraduate instruction only.

Graph 12A: Change in Student FTE to Faculty FTE Ratios in Upper Level Courses, 2013 - 2017
(from Table 12)



Graph 12B: Mean Student FTE to Faculty FTE Ratios in Upper Level Courses, 2013 - 2017
(from Table 12)

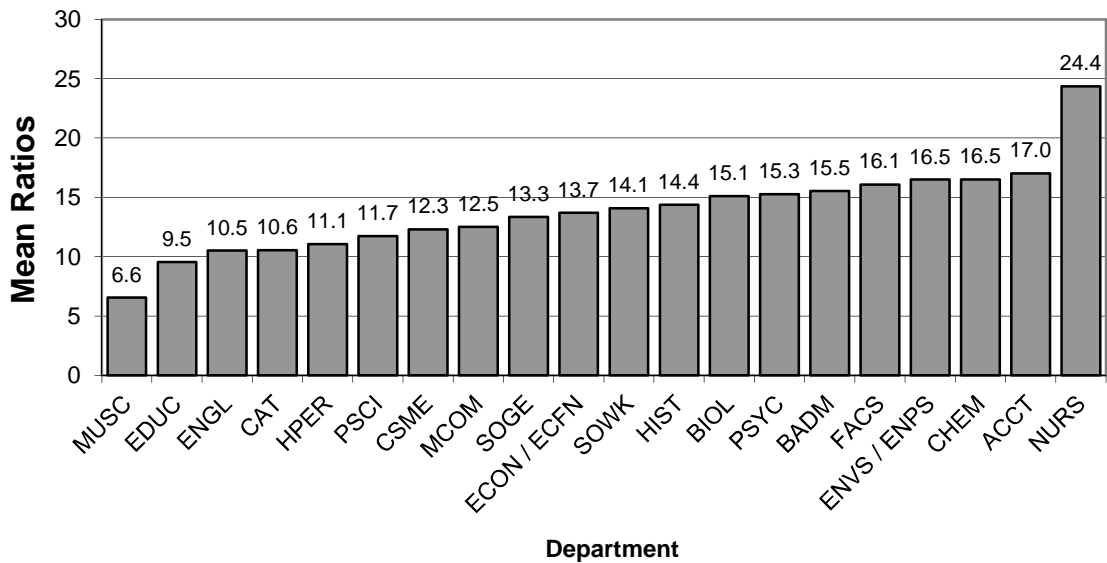
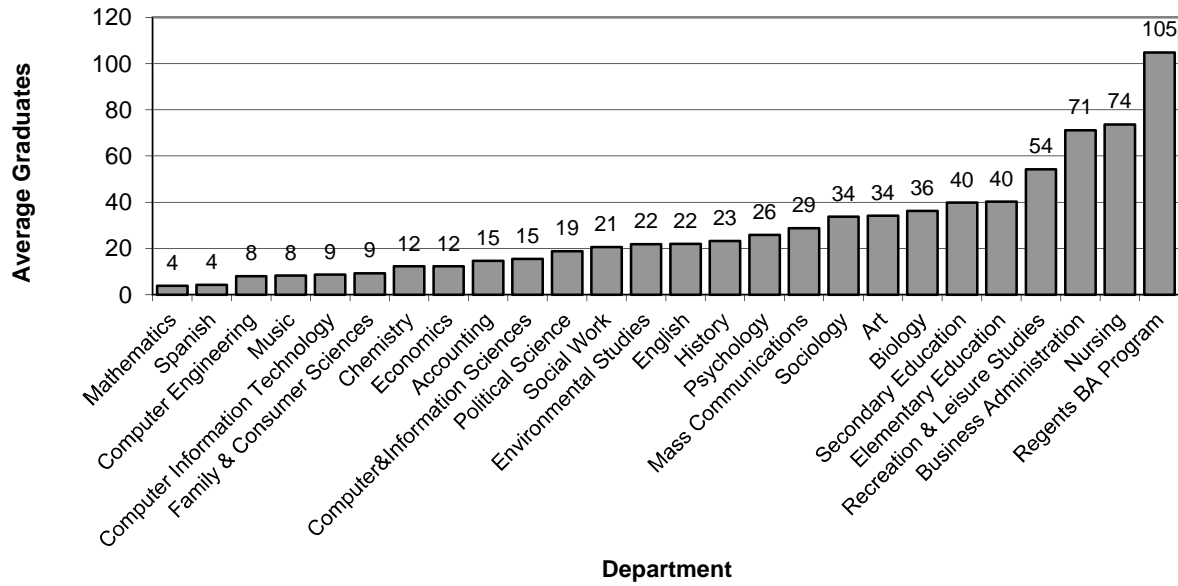


Table 13. Graduates from Baccalaureate Programs

MAJORS OF GRADUATES	2012-13	2013-14	2014-15	2015-16	2016-17	Mean N	Change	%age change
Art	35	34	34	31	37	34.2	2	5.7%
Comm New Media	23	27	36	23	35	28.8	12	52.2%
English	23	26	19	21	21	22.0	-2	-8.7%
History	17	23	27	28	21	23.2	4	23.5%
Music	8	10	9	10	4	8.2	-4	-50.0%
Music Performance					3	3.0	3	N/A
Spanish	3	3	4	4	7	4.2	4	133.3%
<i>Arts and Humanities</i>	<i>109</i>	<i>123</i>	<i>129</i>	<i>117</i>	<i>128</i>	<i>121.2</i>	<i>19</i>	<i>17.4%</i>
Accounting	12	14	19	14	14	14.6	2	16.7%
Business Administration	79	77	67	72	61	71.2	-18	-22.8%
Economics	9	19	11	14	8	12.2	-1	-11.1%
<i>Business</i>	<i>100</i>	<i>110</i>	<i>97</i>	<i>100</i>	<i>83</i>	<i>98.0</i>	<i>-17</i>	<i>-17.0%</i>
Family & Consumer Sciences	7	12	8	8	11	9.2	4	57.1%
Political Science	22	19	18	17	18	18.8	-4	-18.2%
Psychology	28	27	25	25	24	25.8	-4	-14.3%
Sociology	33	43	36	25	32	33.8	-1	-3.0%
Social Work	18	22	24	19	20	20.6	2	11.1%
<i>Social & Behavioral Sciences</i>	<i>108</i>	<i>123</i>	<i>111</i>	<i>94</i>	<i>105</i>	<i>108.2</i>	<i>-3</i>	<i>-2.8%</i>
Elementary Education	40	45	54	28	34	40.2	-6	-15.0%
Early Childhood Education				1	0	0.5	0	N/A
Secondary Education	44	35	44	47	29	39.8	-15	-34.1%
Art Education	4	3	1	5	2	3.0	-2	-50.0%
Biology Education	1	1	1	0	0	0.6	-1	-100.0%
Chemistry Education	0	0	1	0	0	0.2	0	#DIV/0!
English Education	4	5	5	10	6	6.0	2	50.0%
Family & Consumer Sci Education	1	1	0	1	1	0.8	0	0.0%
General Science Education	2	0	0	1	1	0.8	-1	-50.0%
Health Education	10	9	12	6	4	8.2	-6	-60.0%
Mathematics Education	3	7	7	2	0	3.8	-3	-100.0%
Music Education	11	13	11	16	6	11.4	-5	-45.5%
Physical Education	11	9	13	6	5	8.8	-6	-54.5%
Social Studies Education	11	8	7	5	8	7.8	-3	-27.3%
Spanish Education	1	0	0	1	0	0.4	-1	-100.0%
Recreation & Leisure Studies	38	55	76	51	51	54.2	13	34.2%
Health Promotion and Ex Sci					2	2.0	2	N/A
Nursing	63	72	75	79	79	73.6	16	25.4%
<i>E&PS</i>	<i>185</i>	<i>207</i>	<i>249</i>	<i>206</i>	<i>195</i>	<i>208.4</i>	<i>10</i>	<i>5.4%</i>
Biology	31	36	33	34	47	36.2	16	51.6%
Chemistry	12	13	11	13	12	12.2	0	0.0%
Computer&Information Sciences	13	19	13	15	17	15.4	4	30.8%
Computer Engineering	7	10	11	5	7	8.0	0	0.0%
Computer Information Technology	3	4	11	14	11	8.6	8	266.7%
Environmental Studies	24	31	13	25	16	21.8	-8	-33.3%
Mathematics	3	2	1	6	7	3.8	4	133.3%
<i>NS&M</i>	<i>93</i>	<i>115</i>	<i>93</i>	<i>112</i>	<i>117</i>	<i>106.0</i>	<i>24</i>	<i>25.8%</i>
Regents BA Program	102	91	111	88	132	104.8	30	29.4%
Shepherd University	697	769	790	717	760	746.6	63	9.0%

1. Numbers are counts of graduates for the academic year listed. For this table, the academic year is considered to run from fall through spring to summer.
2. The **mean** is the sum of the annual counts divided by the number of years presented (five years).
3. The **change** is the current year's number minus the first year's number.

Graph 13A: Average Number of Baccalaureate Degrees by Major, 2012-2013 to 2016-2017 (from Table 13)



Graph 13B: Baccalaureate Graduates in 2016-2017 (from Table 13)

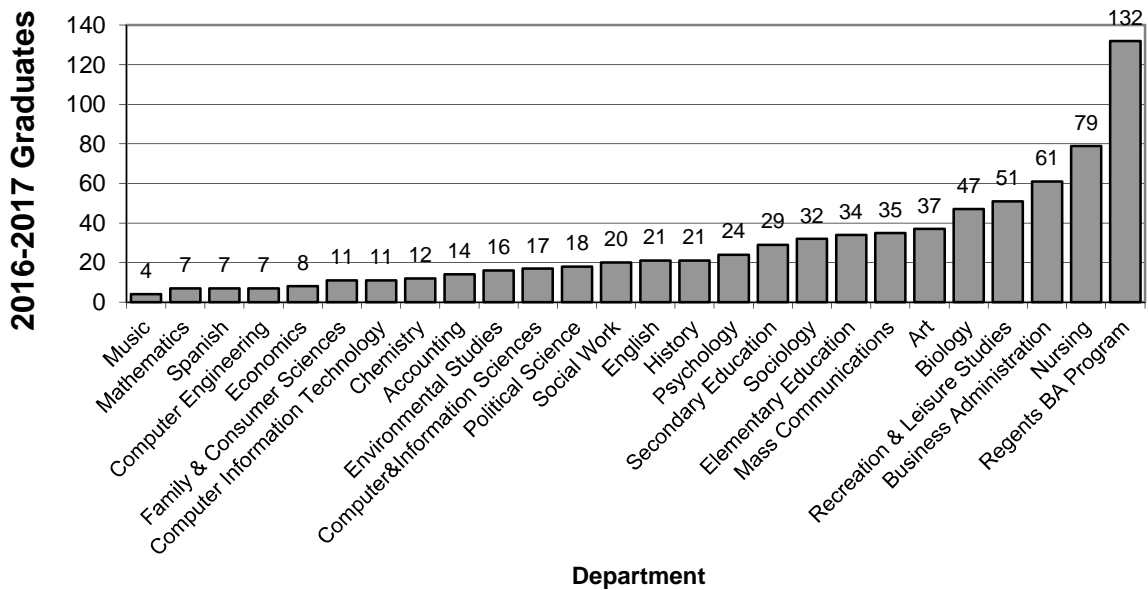


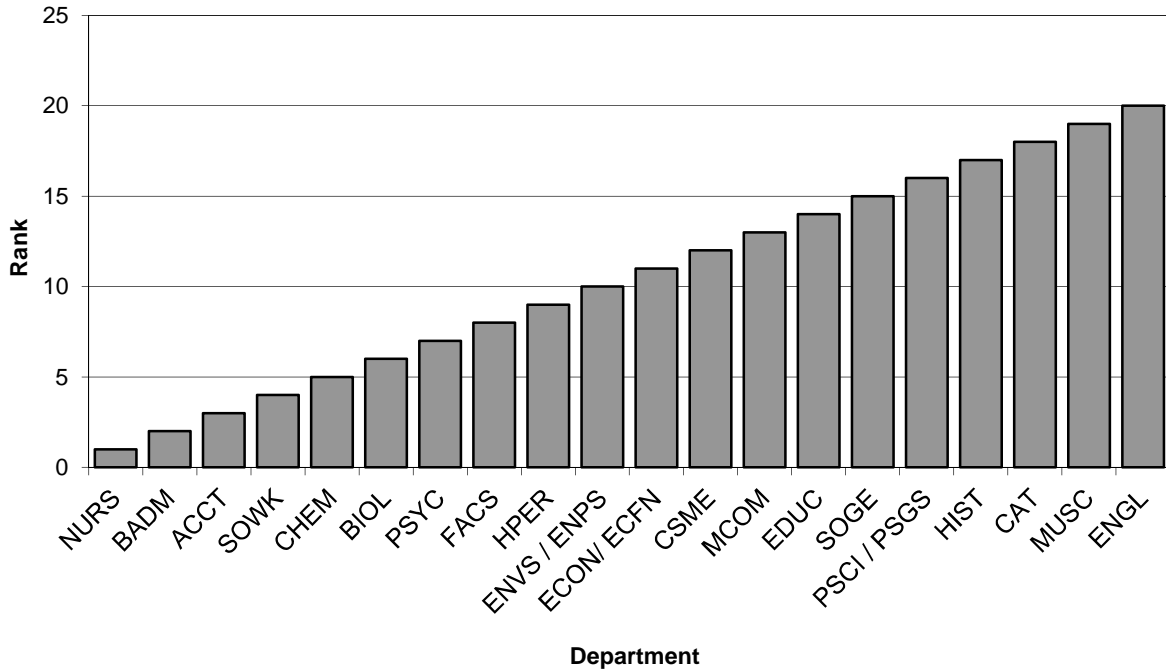
Table 14. SCH per FTE faculty, for non-General Studies / Core Curriculum Courses

Department	Fall 2017 numbers per FTE faculty				Fall 2013 - 2017 numbers per FTE faculty	
	FTE fac	SCH	SCH/FTE	SCH/FTE rank	Mean SCH/FTE	SCH/FTE rank
ACCT	2.75	618.00	224.73	3	244.06	4
BADM	9.76	2925.00	299.69	2	295.36	2
BIOL	6.33	1292.00	204.11	6	201.13	7
CAT	11.29	1416.00	125.42	18	142.18	18
CHEM	2.20	478.00	217.27	5	247.76	3
CSME	11.87	1961.00	165.21	12	169.22	14
ECON/ ECFN	2.00	345.00	172.50	11	185.13	12
EDUC	11.44	1606.00	140.38	14	156.43	15
ENGL	7.33	682.00	93.04	20	121.94	19
ENVS / ENPS	3.92	690.00	176.02	10	210.12	6
FACS	2.82	518.00	183.69	8	192.97	10
HIST	4.45	579.00	130.11	17	154.95	16
HPER	19.25	3472.00	180.36	9	187.61	11
MCOM	4.00	631.00	157.75	13	170.02	13
MUSC	10.67	1036.00	97.09	19	102.81	20
NURS	6.75	2387.00	353.63	1	323.14	1
PSCI / PSGS	2.65	346.00	130.57	16	149.06	17
PSYC	7.97	1585.00	198.87	7	216.74	5
SOGE	8.14	1128.00	138.57	15	194.07	9
SOWK	3.17	701.00	221.14	4	198.03	8
Shepherd University	138.76	24396	175.81		186.36	

General Explanation/Definitions.

1. One faculty **FTE** (full-time equivalent) equals 12 hours of instructional responsibility.
2. **Majors** is the number of majors served by the program.
3. **Grads** is the number of graduates from the program.
4. **SCH** is the total number of credit hours taken by students in courses in the department.
5. **Rank** is a numerical ranking of the department based on the number in question. Ranks run from 1 (highest rank) to 19 (lowest rank).
6. Numbers are for paid courses in undergraduate programs only.
7. Courses are all courses **not** explicitly listed as General Studies or Core Curriculum courses in the appropriate Shepherd course catalogs. All GSPE courses are considered General Studies, but no foreign language courses are included (as these are General Studies requirements for B.A. programs only). Also, the Core Curriculum requirements in Writing in the Major and Capstone in the Major are not considered as Core Curriculum courses here.
8. Faculty FTE numbers for General Studies / Core Curriculum courses cannot be directly or indirectly calculated from available data. Therefore, the numbers used here are calculated based on credit-hours of courses as taken by students, not as calculated for faculty workload reporting. This results in numbers discrepant from those used elsewhere for some departments.

Graph 14A. Overall rank, Fall 2017, non-GS/CC courses



Graph 14B. Overall rank, Fall 2013 - 2017, non-GS/CC courses

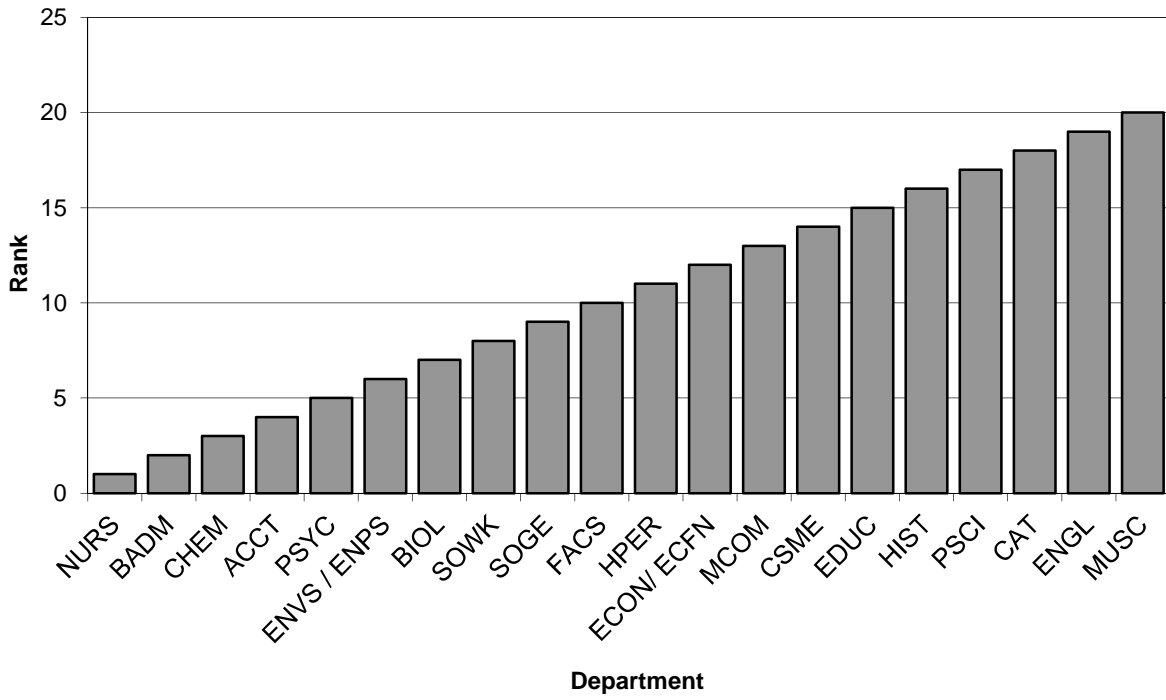


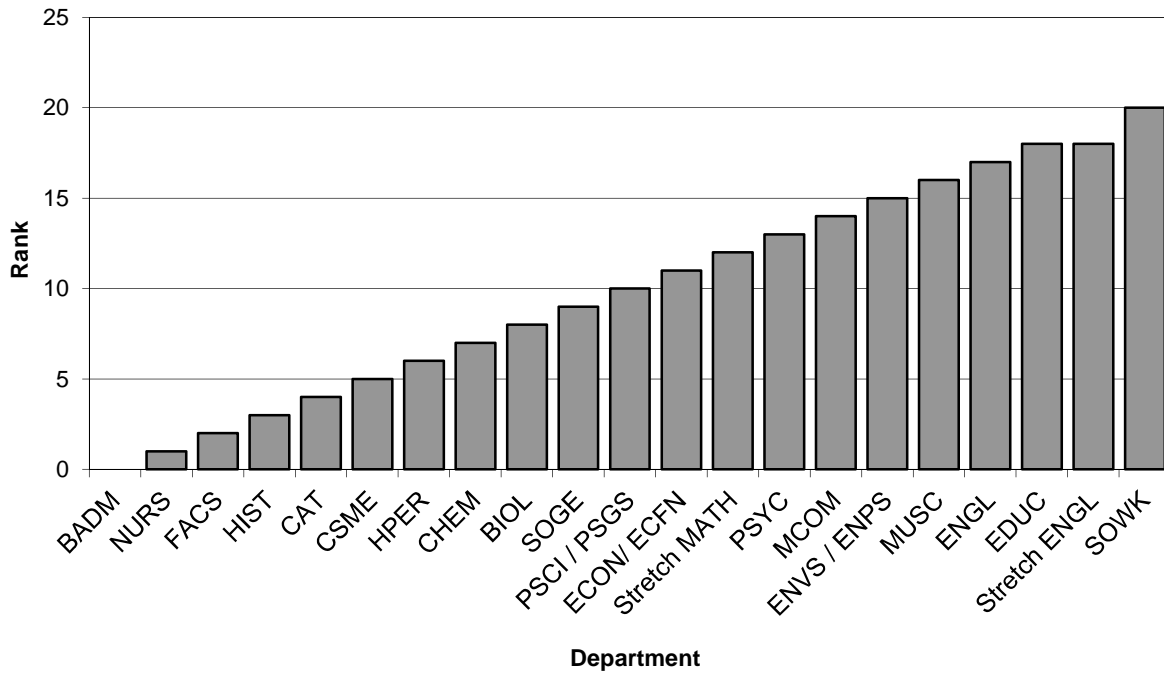
Table 15. SCH per FTE Faculty, for General Studies / Core Curriculum Courses

Department	Fall 2017 numbers per FTE faculty				Fall 2013 - 2017 numbers per FTE faculty	
	FTE fac	SCH	SCH/FTE	SCH/FTE rank	Mean SCH/FTE	SCH/FTE rank
ACCT						
BADM						
BIOL	5.67	1568.00	276.54	8	260.17	13
CAT	3.25	981.00	301.85	4	305.08	4
CHEM	3.83	1121.00	292.69	7	295.77	6
CSME	5.50	1636.00	297.45	5	292.65	7
ECON/ ECFN	4.00	999.00	249.75	11	267.87	9
EDUC	1.50	252.00	168.00	18	200.23	18
ENGL	12.95	2580.00	199.23	17	219.20	16
ENVS / ENPS	3.67	821.00	223.71	15	226.06	15
FACS	1.00	351.00	351.00	2	376.80	1
HIST	3.99	1251.00	313.53	3	348.72	2
HPER	3.83	1130.00	295.04	6	278.03	8
MCOM	3.24	774.00	238.89	14	230.79	14
MUSC	1.90	402.00	211.58	16	218.25	17
NURS	0.50	183.00	366.00	1	331.50	3
PSCI / PSGS	2.25	573.00	254.67	10	263.56	11
PSYC	3.00	729.00	243.00	13	262.02	12
SOGE	4.00	1095.00	273.75	9	302.08	5
SOWK	0.08	7.00	87.50	20	115.63	20
Stretch English	1.50	252.00	168.00	18	153.79	19
Stretch Math	2.50	612.00	244.80	12	266.17	10
Shepherd University	68.16	17317	254.06		262.41	

General Explanation/Definitions.

1. One faculty **FTE** (full-time equivalent) equals 12 hours of instructional responsibility.
2. **Majors** is the number of majors served by the program.
3. **Grads** is the number of graduates from the program.
4. **SCH** is the total number of credit hours taken by students in courses in the department.
5. **Rank** is a numerical ranking of the department based on the number in question. Ranks run from 1 (highest rank) to 14 or 15 (lowest rank).
6. Numbers are for paid courses in undergraduate programs only.
7. Courses are all courses explicitly listed as General Studies or Core Curriculum courses in the appropriate Shepherd course catalogs. All GSPE courses are considered General Studies, but no foreign language courses are included (as these are General Studies requirements for B.A. programs only). Also, the Core Curriculum requirements in Writing in the Major and Capstone in the Major are not considered as Core Curriculum courses here.
8. Faculty FTE numbers for General Studies / Core Curriculum courses cannot be directly or indirectly calculated from available data. Therefore, the numbers used here are calculated based on credit-hours of courses as taken by students, not as calculated for faculty workload reporting. This results in numbers discrepant from those used elsewhere for some departments.

Graph 15A. Overall rank, Fall 2017, GS/CC courses



Graph 15B. Overall rank, Fall 2013 - 2017, GS/CC courses

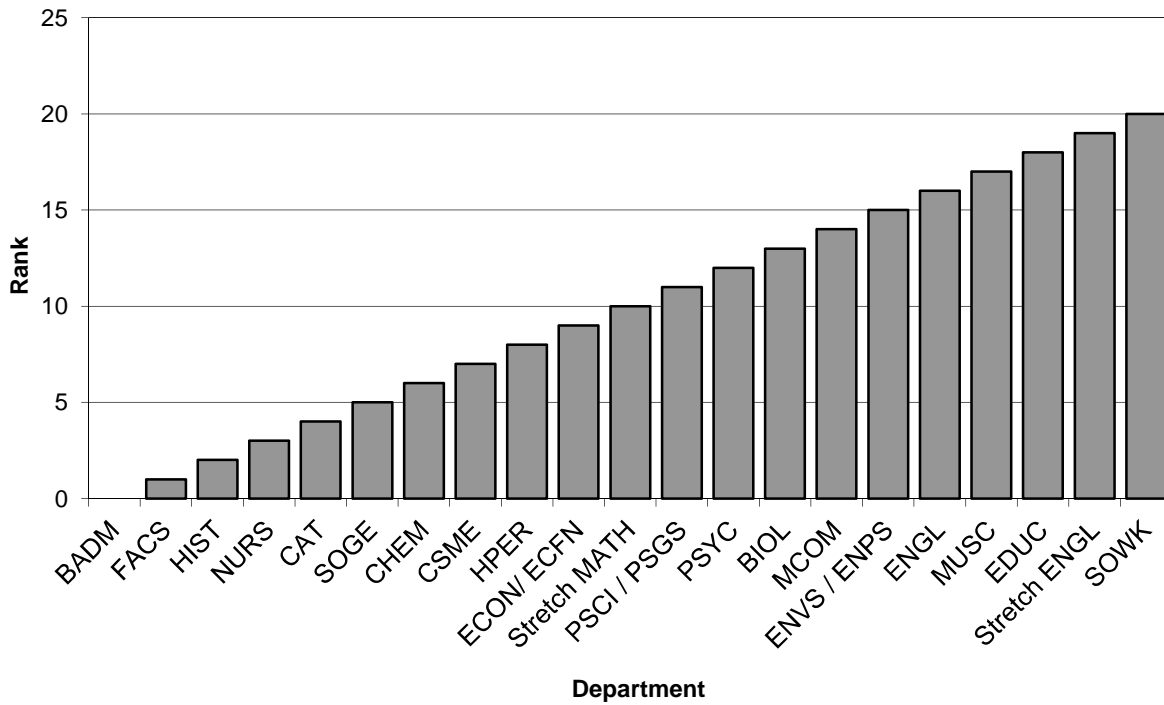


Table 16. Core Curriculum courses by time of day, Fall 2017

Time	Weekdays												Saturday	
	Monday		Tuesday		Wednesday		Thursday		Friday		Total		N	% tot
	N	% tot	N	% tot	N	% tot	N	% tot	N	% tot	N	% tot		
7:00 AM	0	0.0%	0	0.0%	0	0.0%	0	0.0%	0	0.0%	0	0.0%	0	N/A
8:00 AM	10	3.3%	10	4.1%	10	3.2%	10	4.5%	9	3.6%	49	3.7%	0	N/A
9:00 AM	38	12.4%	35	14.3%	38	12.3%	31	14.0%	37	14.9%	179	13.5%	0	N/A
10:00 AM	55	18.0%	26	10.7%	54	17.5%	22	10.0%	50	20.1%	207	15.6%	0	N/A
11:00 AM	50	16.3%	26	10.7%	49	15.9%	22	10.0%	44	17.7%	191	14.4%	0	N/A
12:00 PM	35	11.4%	38	15.6%	37	12.0%	37	16.7%	33	13.3%	180	13.5%	0	N/A
1:00 PM	30	9.8%	27	11.1%	32	10.4%	29	13.1%	29	11.6%	147	11.1%	0	N/A
2:00 PM	31	10.1%	15	6.1%	30	9.7%	16	7.2%	27	10.8%	119	9.0%	0	N/A
3:00 PM	19	6.2%	27	11.1%	19	6.1%	24	10.9%	14	5.6%	103	7.8%	0	N/A
4:00 PM	8	2.6%	18	7.4%	9	2.9%	15	6.8%	5	2.0%	55	4.1%	0	N/A
5:00 PM	6	2.0%	7	2.9%	8	2.6%	6	2.7%	1	0.4%	28	2.1%	0	N/A
6:00 PM	10	3.3%	6	2.5%	10	3.2%	4	1.8%	0	0.0%	30	2.3%	0	N/A
7:00 PM	8	2.6%	5	2.0%	8	2.6%	3	1.4%	0	0.0%	24	1.8%	0	N/A
8:00 PM	5	1.6%	4	1.6%	5	1.6%	2	0.9%	0	0.0%	16	1.2%	0	N/A
9:00 PM	1	0.3%	0	0.0%	0	0.0%	0	0.0%	0	0.0%	1	0.1%	0	N/A
10:00 PM	0	0.0%	0	0.0%	0	0.0%	0	0.0%	0	0.0%	0	0.0%	0	N/A
11:00 PM	0	0.0%	0	0.0%	0	0.0%	0	0.0%	0	0.0%	0	0.0%	0	N/A
Total	306	23.0%	244	18.4%	309	23.3%	221	16.6%	249	18.7%	1329	100.0%	0	N/A

Data derive from census-date Banner data.

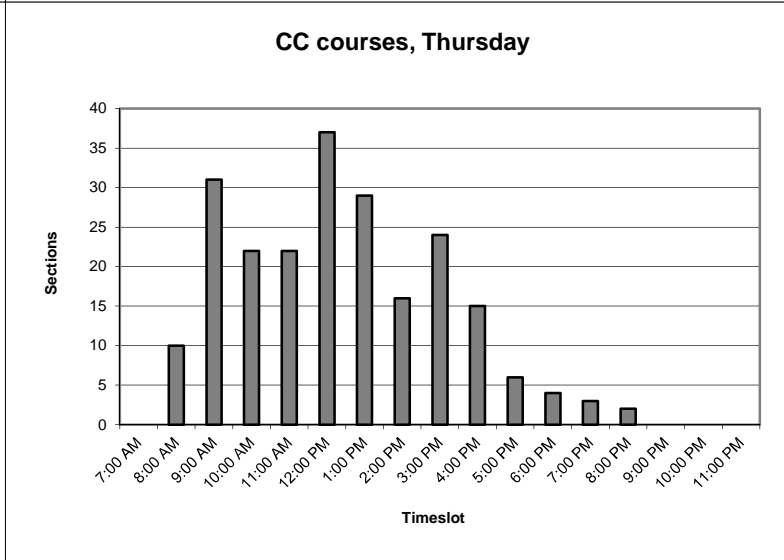
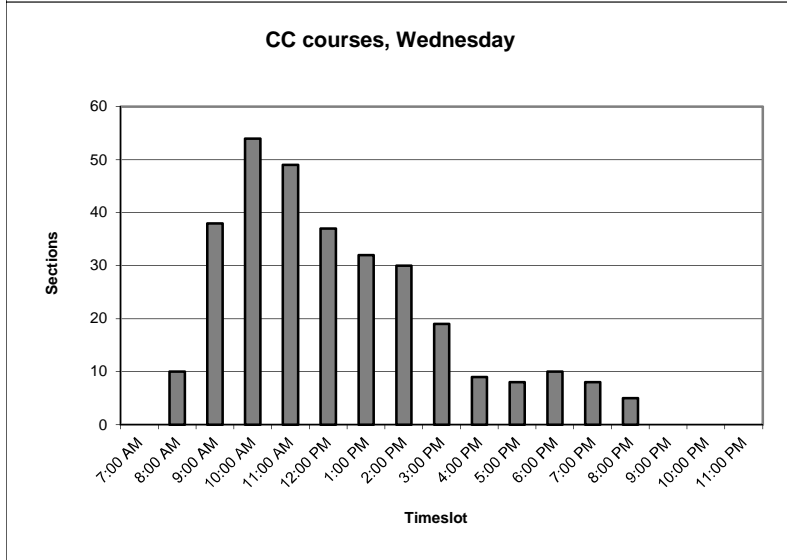
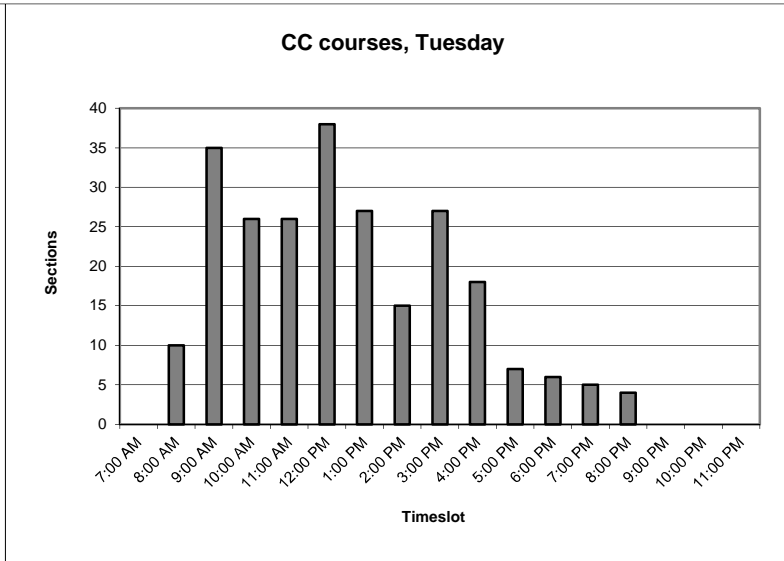
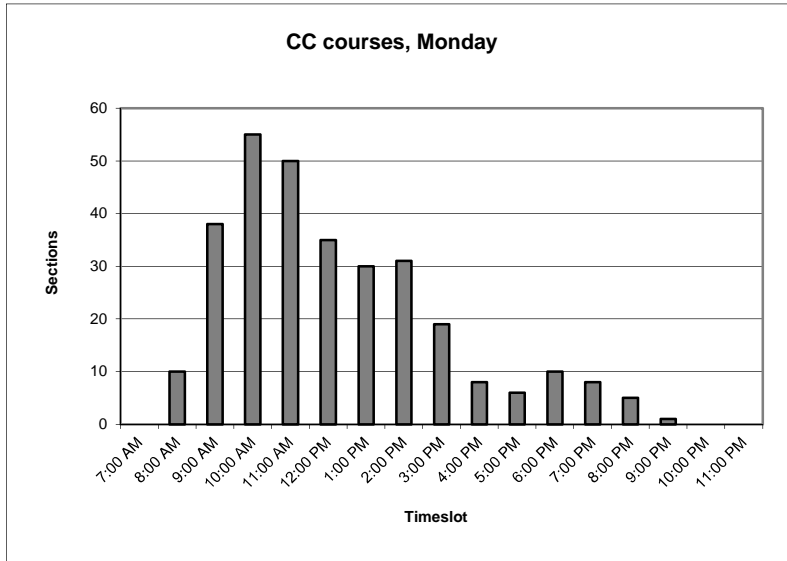
Courses are all courses explicitly listed as Core Curriculum courses in the current Shepherd catalog. The Core Curriculum requirements in Writing in the Major and Capstone in the Major are not included here.

"Time" indicates the timeslot in which the class is running. For example, "10:00 AM" courses are those courses that are in session from 10:00 AM to 10:59 AM. These courses may start at some point during that hour, or may have started earlier and still be in session for part or all of that hour.

"% tot" is the percentage of the column total. In the "Total" line, percentages are computed based upon the line total (excepting Saturdays).

Courses with no scheduled times in Banner ("TBA") are not included here. In Fall 2017, there were 23 of these.

Graphs 16A. Core Curriculum courses by time of day, Monday - Thursday



Graphs 16B. Core Curriculum courses by time of day, Friday, weekdays and Saturday

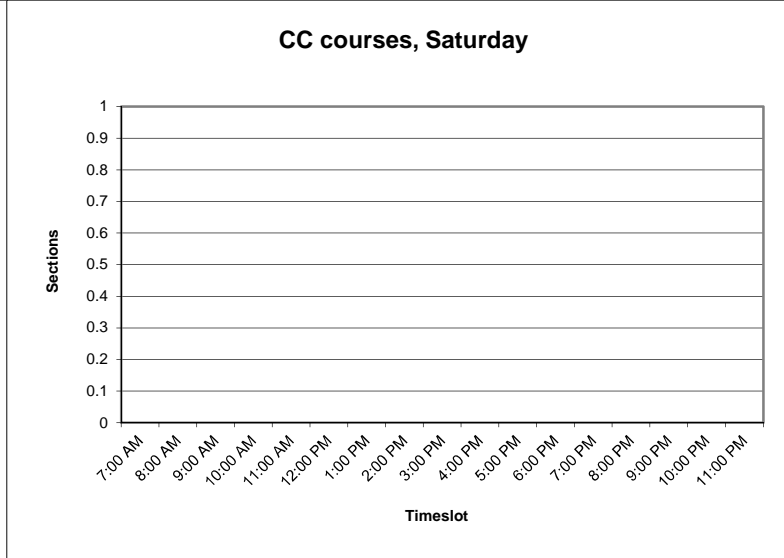
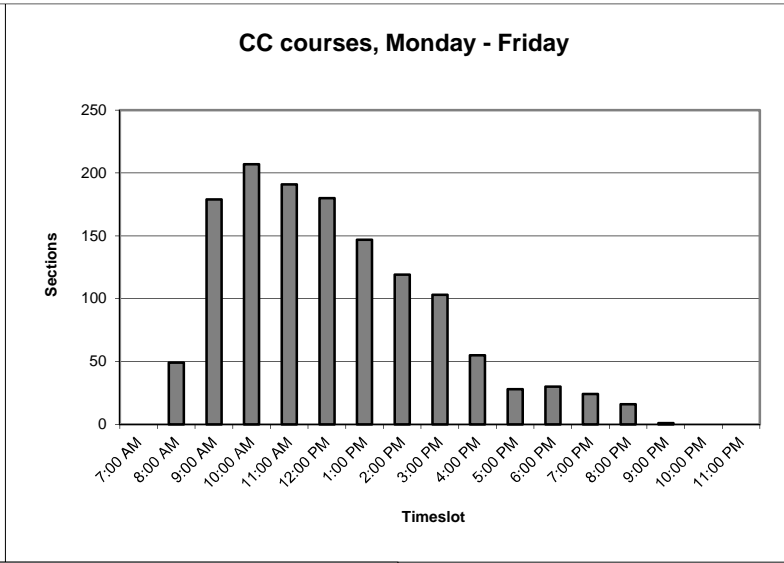
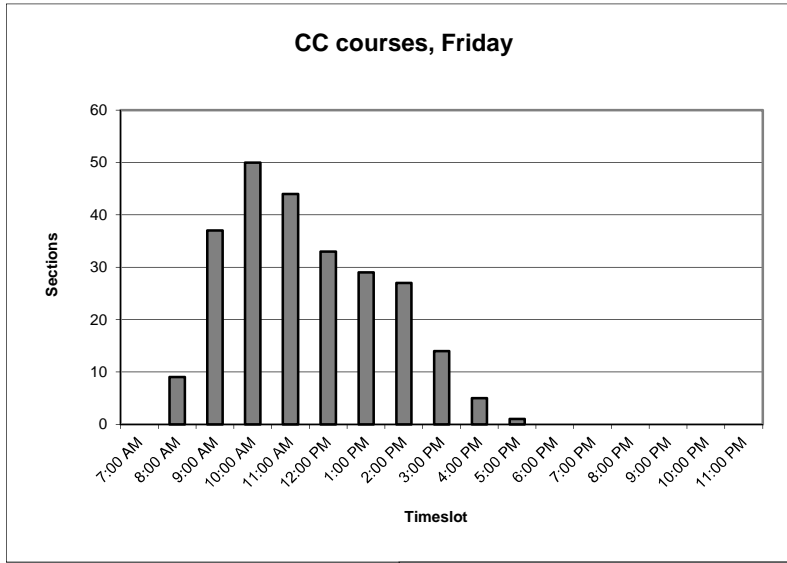


Table 17. Core Curriculum courses offered in standard timeslots, weekdays

Standard start time	Monday		Tuesday		Wednesday		Thursday		Friday		Saturday		Overall	
	N	%	N	%	N	%	N	%	N	%	N	%	N	%
Nonstandard	13	8.8%	11	10.3%	15	10.0%	8	8.1%	0	0.0%	0	N/A	47	7.5%
Standard	134	91.2%	96	89.7%	135	90.0%	91	91.9%	124	100.0%	0	N/A	580	92.5%
Total	147	100.0%	107	100.0%	150	100.0%	99	100.0%	124	100.0%	0	N/A	627	100.0%

Data derive from census-date Banner data.

"Standard" start times are those listed in the Fall semester course catalog with defined final exam schedules. These are:
 MWF: 8:10 AM, 9:10 AM, 10:10 AM, 11:10 AM, 12:10 PM, 1:10 PM, 2:10 PM, 3:10 PM.
 TR: 8:10 AM, 9:35 AM, 11:00 AM, 12:25 PM, 1:50 PM, 3:15 PM.

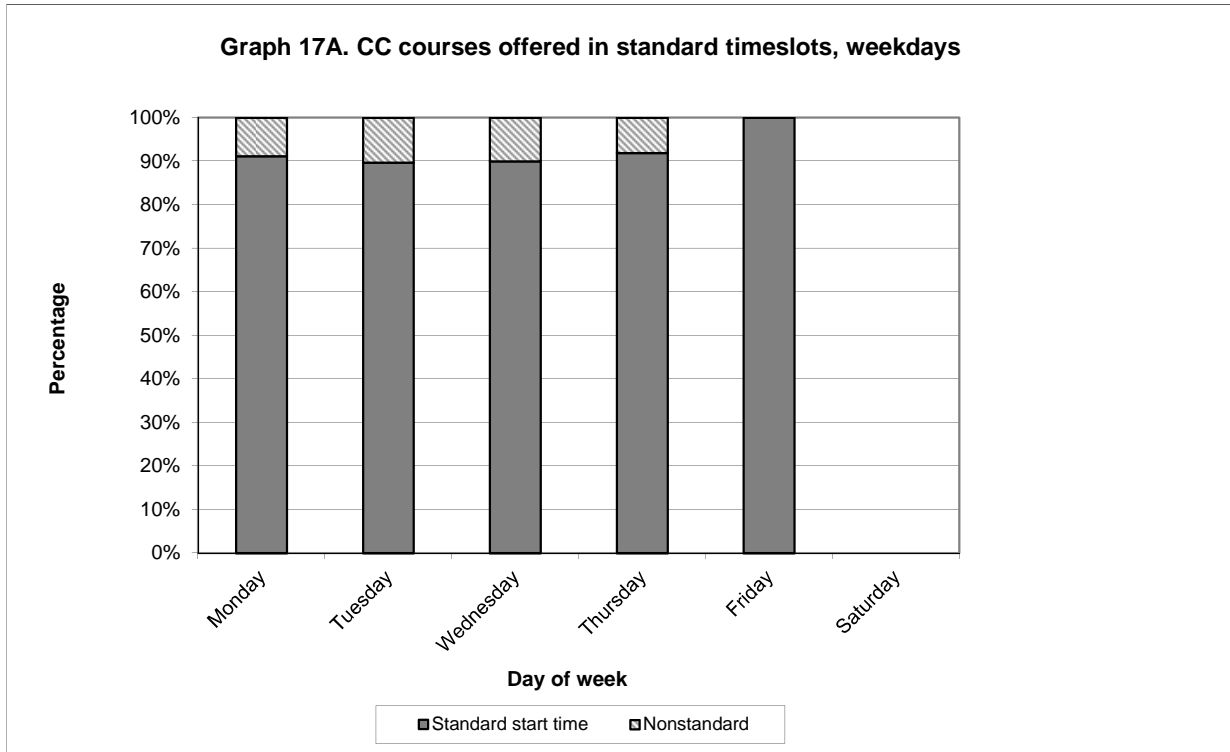


Table 18. Online and hybrid courses, Fall 2013 - Fall 2017

	Fall 2013		Fall 2014		Fall 2015		Fall 2016		Fall 2017		Total		Average	
	N	% all	N	% all	N	% all	N	% all	N	% all	N	% all	N	% all
Hybrid	2	0.2%	5	0.4%	6	0.5%	3	0.3%	7	0.6%	23	0.4%	4.6	0.4%
Online	17	1.5%	29	2.5%	38	3.4%	64	5.7%	74	6.7%	222	3.9%	44.4	3.9%
All courses	1147		1140		1119		1130		1103		5639		1127.8	

All data derive from HEPC census-date data submissions.

"Hybrid" courses are courses with more than 50% online delivery.

"Online" courses are those courses taught entirely online.

"Courses" are sections which receive a unique CRN from the Registrar.

"% all" is the percentage of all courses taught that semester represented by the line. For example, for Fall 2016, the 74 online courses represent 6.7% of the total of 1103 courses taught that semester.

The HEPC data from which these numbers derive allows for three categories of online courses up through Fall 2013:

100% non-traditional delivery (labeled as "Online" here)

50% - 99% non-traditional delivery (labeled as "Hybrid" here)

Less than 50% non-traditional delivery (included in "All courses", but not listed separately here)

"Non-traditional delivery" can include electronic or analog delivery (e.g., correspondence courses, satellite courses), but in practice usually indicates online delivery.

As of Fall 2014, the "50% - 99%" category is subdivided into "50% - 74%" and "75% - 99%" categories; I have summed these two back together into "Hybrid" here.

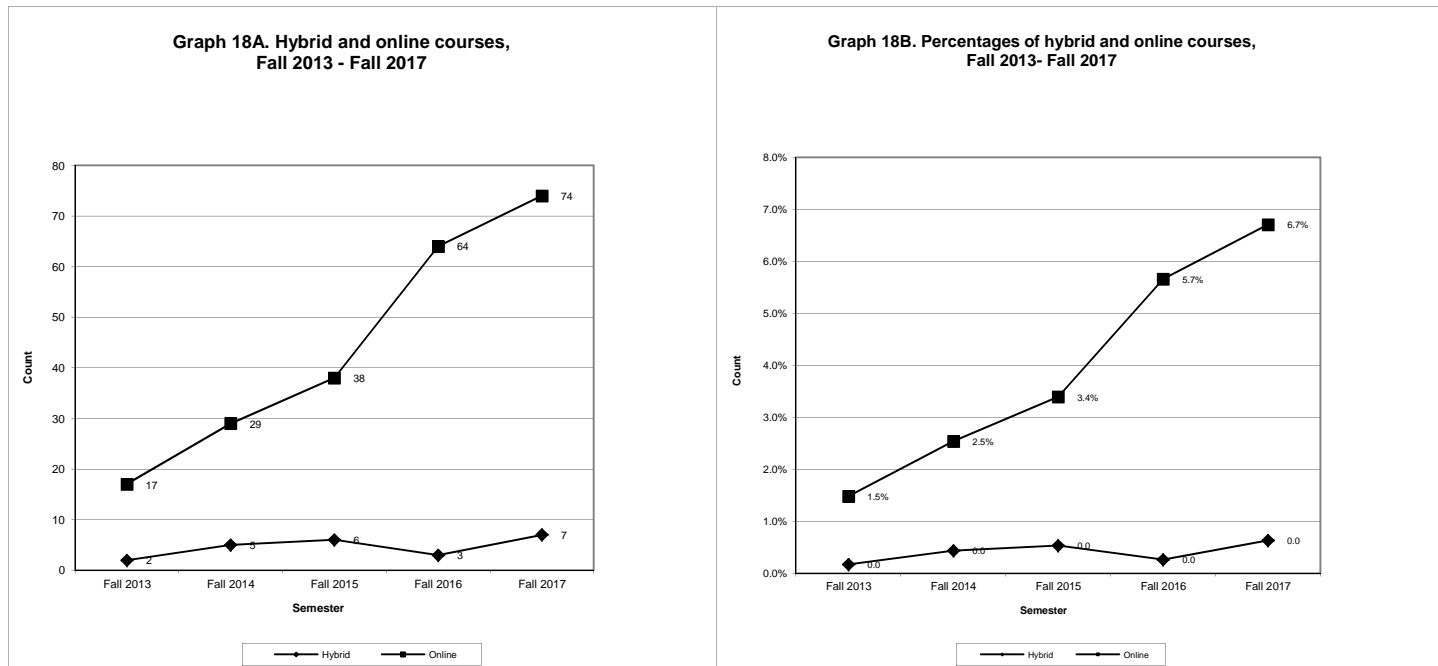


Table 19. Students Enrolled in Graduate Programs

Program	Fall 2013		Fall 2014		Fall 2015		Fall 2016		Fall 2017		Fall 2013-17	
	FTE	HC	FTE	HC	FTE	HC	FTE	HC	FTE	HC	Mean FTE	Change in FTE
Business Administration	47.75	79	52.83	78	41.00	65	50.25	82	54.75	89	49.32	7.00
Curriculum and Instruction	6.75	18	10.75	26	7.50	22	7.75	18	5.83	14	7.72	-0.92
Music Education	1.50	6	3.00	10	2.00	5	0.00	0	0	0	1.30	-1.50
Student Development and Administration	24.00	38	21.00	34	17.83	27	17.00	26	19.25	28	19.82	-4.75
Teaching	26.92	33	27.25	36	17.08	26	17.83	25	17.75	26	21.37	-9.17
DNP	N/A	N/A	N/A	N/A	12.17	15	15.92	22	19.42	25	15.84	N/A
Shepherd University	106.92	174	114.83	184	96.50	159	108.75	173	117	182	108.80	10.08

General Explanation / Definitions.

1. The student **FTE** (full-time equivalent) equals 12 credit hours.
2. The **HC** is the headcount of students enrolled in and taking courses in the degree program.
3. The **mean FTE** is the average FTE for the years shown.
4. The **change in FTE** is the change in the FTE from the current year to the earliest year shown.
5. Each student is counted once in each program in which s/he is enrolled. Students enrolled in multiple programs are thus counted more than once. FTE and HC totals, however, are nonduplicated - each student is counted once regardless of the number of programs s/he is enrolled in. Thus, HC and FTE totals may not match totals across the individual programs.

Table 20. Graduates from Graduate Programs

Program	2012-13	2013-14	2014-15	2015-16	2016-17	Mean N	Change
Business Administration	31	35	40	17	24	29.4	-7
Curriculum and Instruction	12	4	4	9	10	7.8	-2
Music Education	4	0	3	3	4	2.8	0
Student Development and Administration	10	13	19	11	14	13.4	4
Teaching	4	12	11	15	14	11.2	10
DNP				0	0	0	0
Shepherd University	61	64	77	55	66	64.6	5

Numbers of graduates are computed using the fall, spring, and following summer of the stated year.

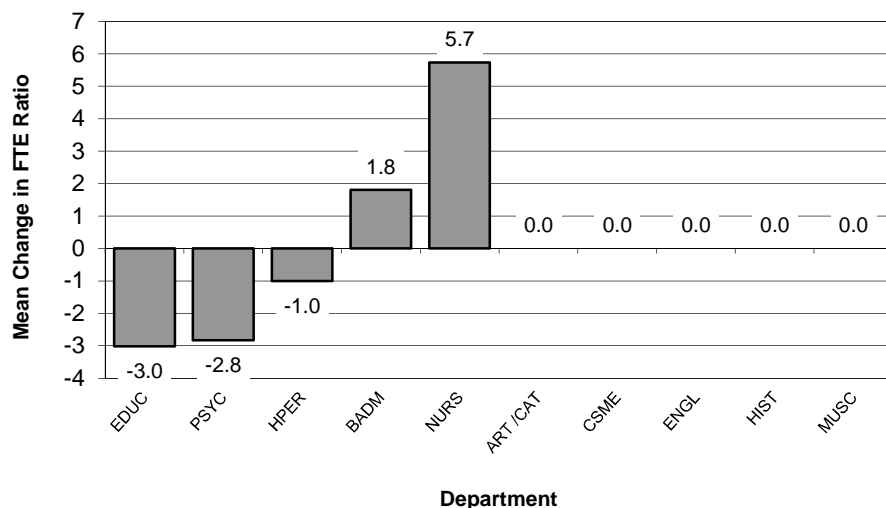
Table 21. Graduate Student to Faculty FTE Ratios

Department	Fall 2013			Fall 2014			Fall 2015			Fall 2016			Fall 2017				Fall 2013-17	
	F-FTE	S-FTE	Ratio	F-FTE	S-FTE	Ratio	F-FTE	S-FTE	Ratio	F-FTE	S-FTE	Ratio	F-FTE	S-FTE	Ratio	Change	Mean Ratio	Change in Ratio
CAT	0.00	0.00	N/A	0.25	0.25	1.00	0.25	0.25	1.00	0.50	0.75	1.50	0.25	0.25	1.00	-0.50	0.90	N/A
BADM	5.25	48.25	9.19	5.48	54.00	9.85	5.50	42.75	7.77	6.56	52.75	8.04	5.23	57.50	10.99	2.95	7.64	1.80
CSME	0.00	0.00	N/A	0.00	0.00	N/A	0.00	0.00	N/A	0.00	0.00	N/A	0.50	1.25	2.50	N/A	1.25	N/A
EDUC	3.75	26.75	7.13	4.25	33.25	7.82	5.00	22.00	4.40	4.50	21.50	4.78	4.25	17.50	4.12	-0.66	4.71	-3.02
ENGL	0.50	0.75	1.50	0.25	0.50	2.00	0.00	0.00	N/A	0.42	1.67	N/A	1.00	1.75	N/A	N/A	1.17	N/A
HIST	0.00	0.00	N/A	0.00	0.00	N/A	0.00	0.00	N/A	0.00	0.00	N/A	0.50	0.50	1.00	N/A	0.50	N/A
HPER	0.25	0.50	2.00	0.00	0.00	N/A	0.00	0.00	N/A	0.00	0.00	N/A	0.25	0.25	1.00	N/A	1.00	-1.00
MUSC	0.33	1.25	3.79	0.67	2.50	3.73	0.50	1.00	2.00	0.00	0.00	N/A	0.00	0.00	N/A	N/A	2.38	N/A
NURS	0.25	0.25	1.00	0.00	0.00	N/A	1.08	11.42	10.57	1.50	15.67	10.45	2.92	19.67	6.74	-3.71	5.75	5.74
PSYC	1.50	24.00	16.00	1.50	21.00	14.00	1.50	16.00	10.67	1.50	18.00	12.00	1.50	19.75	13.17	1.17	10.97	-2.83
Shepherd University	11.83	101.75	8.60	12.40	111.50	8.99	13.83	93.42	6.75	14.98	110.34	7.37	16.40	118.42	7.22	-0.15	6.49	-1.38

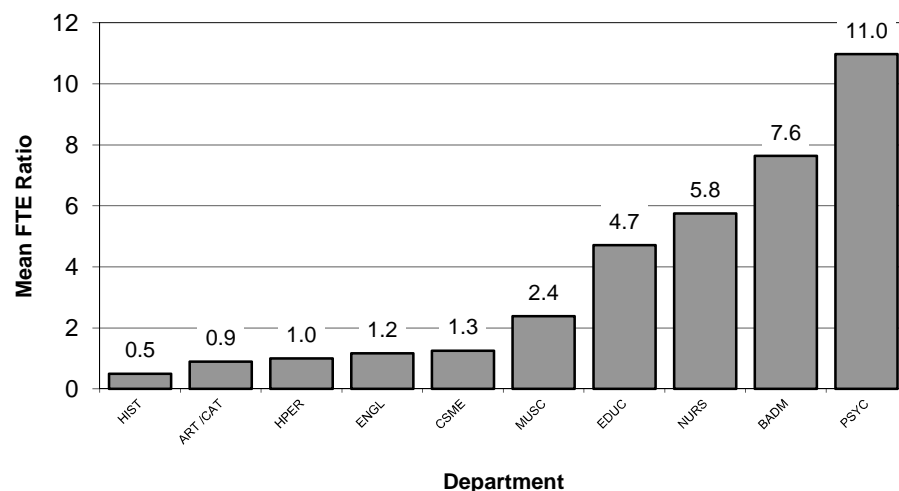
General Explanation/Definitions.

1. The **ratio** is obtained by dividing the student FTE by the faculty FTE.
2. One faculty **FTE** (full-time equivalent) equals 12 hours of instructional responsibility and one student FTE equals 12 credit hours. The ratio is the student FTE divided by the faculty FTE.
3. The annual **change** is the current year's ratio minus the prior year's ratio.
4. The **mean ratio** is the sum of the annual ratios divided by the number of years for which data exist.
5. The **change in ratio** is the current year's ratio minus the first year's ratio.
6. Numbers are for paid courses only.

Graph 20A: Mean Change in FTE Ratios (Student FTE: Faculty FTE) for Graduate Courses, 2013-2017
(from Table 20)



Graph 20B: Mean FTE Ratios (Student FTE: Faculty FTE) for Graduate Courses, 2013-2017
(from Table 20)



Except for Tables 22 and 29-31, all tables are for undergraduate degree-seeking students only and the census date (10/16/17) HEPC Student file is the source of data. Only credit-earning students are counted unless noted otherwise.

Table 22. Degree Targets

	Bacc	None	Master's	DNP	Total
4-Year	2958	649	157	25	3789

(Includes noncredit students)

Table 23. ACT and ACT Equivalent Scores by Residency

	ACT		ACT Equivalent		Total	
	N	Mean	N	Mean	N	Mean
Eastern Panhandle	1028	21.6	212	22.0	1240	21.7
<i>Berkeley</i>	634	21.6	90	21.1	724	21.5
<i>Jefferson</i>	345	21.6	119	22.7	464	21.9
<i>Morgan</i>	49	21.6	3	25.3	52	21.8
Other WV counties	189	23.0	7	24.1	196	23.0
MD	83	20.3	274	21.6	357	21.3
VA	45	21.0	95	20.8	140	20.9
PA	7	23.0	27	21.5	34	21.8
Other US states	21	21.0	25	19.5	46	20.2
International	3	20.0	5	20.4	8	20.3
Total	1376	21.7	645	21.5	2021	21.6

National ACT scores, class of 2017:

Mean 21.0

WV ACT scores, class of 2017:

Mean 20.4

Note: Some students submitted both ACT and SAT scores at the time of admission. Students doing so chose one or the other as the preferred score type; only those scores are used for these tables. Some students submitted neither score.

Table 24. Status by Residency, Five-Year Trends

	Full-Time											
	Fall 2013		Fall 2014		Fall 2015		Fall 2016		Fall 2017		Total	
	N	%	N	%	N	%	N	%	N	%	N	%
Eastern Panhandle	1706	46.2%	1631	46.7%	1550	46.7%	1472	47.6%	1487	50.3%	7846	47.4%
<i>Berkeley</i>	993	26.9%	920	26.4%	902	27.2%	850	27.5%	865	29.3%	4530	27.4%
<i>Jefferson</i>	638	17.3%	633	18.1%	581	17.5%	551	17.8%	563	19.0%	2966	17.9%
<i>Morgan</i>	75	2.0%	78	2.2%	67	2.0%	71	2.3%	59	2.0%	350	2.1%
Other WV counties	297	8.0%	255	7.3%	251	7.6%	231	7.5%	217	7.3%	1251	7.6%
MD	770	20.8%	745	21.4%	718	21.6%	631	20.4%	555	18.8%	3419	20.7%
VA	333	9.0%	300	8.6%	263	7.9%	228	7.4%	217	7.3%	1341	8.1%
PA	70	1.9%	56	1.6%	61	1.8%	60	1.9%	54	1.8%	301	1.8%
Other US states	99	2.7%	89	2.6%	81	2.4%	66	2.1%	62	2.1%	397	2.4%
International	13	0.4%	14	0.4%	10	0.3%	9	0.3%	19	0.6%	65	0.4%
Total	3288	89.0%	3090	88.6%	2934	88.4%	2697	87.2%	2611	88.3%	14620	88.3%

	Part-Time											
	Fall 2013		Fall 2014		Fall 2015		Fall 2016		Fall 2017		Total	
	N	%	N	%	N	%	N	%	N	%	N	%
Eastern Panhandle	285	7.7%	279	8.0%	282	8.5%	277	9.0%	239	8.1%	1362	8.2%
<i>Berkeley</i>	161	4.4%	150	4.3%	164	4.9%	166	5.4%	157	5.3%	798	4.8%
<i>Jefferson</i>	118	3.2%	119	3.4%	107	3.2%	103	3.3%	74	2.5%	521	3.1%
<i>Morgan</i>	6	0.2%	10	0.3%	11	0.3%	8	0.3%	8	0.3%	43	0.3%
Other WV counties	14	0.4%	14	0.4%	14	0.4%	12	0.4%	14	0.5%	68	0.4%
MD	51	1.4%	52	1.5%	49	1.5%	69	2.2%	66	2.2%	287	1.7%
VA	41	1.1%	37	1.1%	34	1.0%	27	0.9%	18	0.6%	157	0.9%
PA	7	0.2%	10	0.3%	4	0.1%	3	0.1%	1	0.0%	25	0.2%
Other US states	9	0.2%	6	0.2%	3	0.1%	7	0.2%	4	0.1%	29	0.2%
International	0	0.0%	1	0.0%	0	0.0%	2	0.1%	3	0.1%	6	0.0%
Total	407	11.0%	399	11.4%	386	11.6%	397	12.8%	345	11.7%	1934	11.7%

	Total											
	Fall 2013		Fall 2014		Fall 2015		Fall 2016		Fall 2017		Total	
	N	%	N	%	N	%	N	%	N	%	N	%
Eastern Panhandle	1991	53.9%	1910	54.7%	1832	55.2%	1749	56.5%	1726	58.4%	9208	55.6%
<i>Berkeley</i>	1154	31.2%	1070	30.7%	1066	32.1%	1016	32.8%	1022	34.6%	5328	32.2%
<i>Jefferson</i>	756	20.5%	752	21.6%	688	20.7%	654	21.1%	637	21.5%	3487	21.1%
<i>Morgan</i>	81	2.2%	88	2.5%	78	2.3%	79	2.6%	67	2.3%	393	2.4%
Other WV counties	311	8.4%	269	7.7%	265	8.0%	243	7.9%	231	7.8%	1319	8.0%
MD	821	22.2%	797	22.8%	767	23.1%	700	22.6%	621	21.0%	3706	22.4%
VA	374	10.1%	337	9.7%	297	8.9%	255	8.2%	235	7.9%	1498	9.0%
PA	77	2.1%	66	1.9%	65	2.0%	63	2.0%	55	1.9%	326	2.0%
Other US states	108	2.9%	95	2.7%	84	2.5%	73	2.4%	66	2.2%	426	2.6%
International	13	0.4%	15	0.4%	10	0.3%	11	0.4%	22	0.7%	71	0.4%
Total	3695	100.0%	3489	100.0%	3320	100.0%	3094	100.0%	2956	100.0%	16554	100.0%

All percentages for each year are computed based upon the total students for each year. For example, for Fall 2017, the 1487 full-time students in the Eastern Panhandle are 50.3% of the total number of students in Fall 2017 (2956). Tables include undergraduate degree-seeking credit students only.

Table 25. ACT and ACT Equivalent Scores by Residency

	ACT or ACT Equivalent										Total	Mean
	16 or lower	17	18	19	20	21	22	23-25	26-30	31 or higher	N	
WV	72	98	100	122	147	147	152	375	200	23	1436	21.8
MD	22	32	37	41	43	24	41	73	38	6	357	21.3
VA	7	14	18	25	10	13	6	32	14	1	140	20.9
PA	1	0	5	3	3	5	3	10	4	0	34	21.8
Other US states	3	7	6	7	7	3	5	4	3	1	46	20.2
International	1	2	0	1	0	0	0	4	0	0	8	20.3
Total	106	153	166	199	210	192	207	498	259	31	2021	21.6

Note: Some students submitted both ACT and SAT scores at the time of admission. Students doing so chose one or the other as the preferred score type; only those scores are used for these tables. Some students submitted neither score.

Table 26. Class Level by Residency

	Freshmen		Sophomore		Junior		Senior		Unclassified		Total	
	N	Percent	N	Percent	N	Percent	N	Percent	N	Percent	N	Percent
Panhandle	482	16.3%	321	10.9%	396	13.4%	523	17.7%	4	0.1%	1726	58.4%
<i>Berkeley</i>	281	9.5%	178	6.0%	250	8.5%	309	10.5%	4	0.1%	1022	34.6%
<i>Jefferson</i>	190	6.4%	130	4.4%	128	4.3%	189	6.4%	0	0.0%	637	21.5%
<i>Morgan</i>	11	0.4%	13	0.4%	18	0.6%	25	0.8%	0	0.0%	67	2.3%
Other WV counties	62	2.1%	49	1.7%	52	1.8%	68	2.3%	0	0.0%	231	7.8%
MD	138	4.7%	99	3.3%	165	5.6%	216	7.3%	3	0.1%	621	21.0%
VA	58	2.0%	35	1.2%	70	2.4%	72	2.4%	0	0.0%	235	7.9%
PA	16	0.5%	15	0.5%	16	0.5%	8	0.3%	0	0.0%	55	1.9%
Other US states	20	0.7%	15	0.5%	10	0.3%	20	0.7%	1	0.0%	66	2.2%
International	7	0.2%	5	0.2%	5	0.2%	5	0.2%	0	0.0%	22	0.7%
Total	783	26.5%	539	18.2%	714	24.2%	912	30.9%	8	0.3%	2956	100.0%

**Table 27. Retention of Fall 2016
Freshman Cohort by Residency**

	Freshmen	Returned	Percent
Eastern Panhandle	306	204	66.7%
<i>Berkeley</i>	176	109	61.9%
<i>Jefferson</i>	115	86	74.8%
<i>Morgan</i>	15	9	60.0%
Other WV counties	71	48	67.6%
MD	99	63	63.6%
VA	57	31	54.4%
PA	11	9	81.8%
Other US states	14	7	50.0%
International	1	1	100.0%
Total	559	363	64.9%

Full-time first-time-in-college freshmen who enrolled in Fall 2016 and were still enrolled as of Fall 2017. Students who withdrew after enrolling this semester are included.

**Table 28. Graduation of Fall 2011
Freshman Cohort by Residency**

	Bacc. grads	Percent
Eastern Panhandle	149	45.3%
<i>Berkeley</i>	79	24.0%
<i>Jefferson</i>	63	19.1%
<i>Morgan</i>	7	2.1%
Other WV counties	36	10.9%
MD	82	24.9%
VA	39	11.9%
PA	10	3.0%
Other US states	11	3.3%
International	2	N/A
Total	329	100.0%

In Fall 2011, 783 entering full-time, first-time-in-college freshmen declared that they were seeking baccalaureate degrees. From this group, 329 students (42.0%) were awarded baccalaureate degrees by August 2017.

Table 29. Student Headcount by Registration Type

Type	Fall 2013		Fall 2014		Fall 2015		Fall 2016		Fall 2017		Change 2013-17	
	Head	Percent	Head	Percent	Head	Percent	Head	Percent	Head	Percent	N	Percent
Returning	2703	64.0%	2602	64.4%	2364	61.2%	2221	58.8%	2083	55.8%	-620	-22.9%
New Freshmen	684	16.2%	642	15.9%	638	16.5%	564	14.9%	598	16.0%	-86	-12.6%
Readmitted	58	1.4%	43	1.1%	44	1.1%	51	1.3%	25	0.7%	-33	-56.9%
Transient/Special	334	7.9%	356	8.8%	361	9.3%	495	13.1%	532	14.2%	198	59.3%
High School	19	0.5%	13	0.3%	21	0.5%	15	0.4%	64	1.7%	45	236.8%
Transfer	355	8.4%	322	8.0%	370	9.6%	362	9.6%	359	9.6%	4	1.1%
First Time Master's	68	1.6%	63	1.6%	48	1.2%	58	1.5%	64	1.7%	-4	-5.9%
First Time Doctoral		0.0%		0.0%	15	0.4%	13	0.3%	11	0.3%	11	N/A
Total	4221	100.0%	4041	100.0%	3861	100.0%	3779	100.0%	3736	100.0%	-485	-11.5%

1

Table 30. Student FTE by Registration Type

Registration Type	Fall 2013		Fall 2014		Fall 2015		Fall 2016		Fall 2017		Change 2013-17	
	FTE	Percent	FTE	Percent	Head	Percent	Head	Percent	Head	Percent	N	Percent
Returning	2503	68.7%	2395	59.3%	2181	56.5%	2029	53.7%	1906	51.0%	-597	-23.9%
New Freshmen	679	18.6%	639	15.8%	645	16.7%	566	15.0%	600	16.0%	-79	-11.7%
Readmitted	40	1.1%	30	0.7%	23	0.6%	33	0.9%	16	0.4%	-24	-59.6%
Transient/Special	64	1.8%	71	1.8%	73	1.9%	106	2.8%	109	2.9%	45	69.9%
High School	4	0.1%	3	0.1%	5	0.1%	3	0.1%	17	0.4%	12	300.2%
Transfer	307	8.4%	276	6.8%	313	8.1%	307	8.1%	303	8.1%	-4	-1.2%
First Time Master's	45	1.2%	44	1.1%	31	0.8%	39	1.0%	43	1.2%	-2	-3.9%
First Time Doctoral		0.0%		0.0%	12	0.3%	10	0.3%	9	0.2%	9	N/A
Total	3642	86.3%	3458	85.6%	3282	85.0%	3094	81.9%	3002	80.4%	-640	-17.6%

Table 31. Student Headcount by Race and Ethnicity

Race / ethnicity	Fall 2013		Fall 2014		Fall 2015		Fall 2016		Fall 2017		Change 2013-17	
	Head	Percent	Head	Percent	Head	Percent	Head	Percent	Head	Percent	N	Percent
Hispanic	112	2.7%	116	2.9%	107	2.8%	126	3.3%	156	4.2%	44	39.3%
Am Ind/Alaskan	23	0.5%	26	0.6%	21	0.5%	23	0.6%	18	0.5%	-5	-21.7%
Black	333	7.9%	324	8.0%	342	8.9%	306	8.1%	296	7.9%	-37	-11.1%
White	3524	83.5%	3394	84.0%	3177	82.3%	3101	82.1%	3000	80.3%	-524	-14.9%
Asian	84	2.0%	74	1.8%	94	2.4%	75	2.0%	72	1.9%	-12	-14.3%
Nat HI / OPI	6	0.1%	3	0.1%	3	0.1%	2	0.1%	4	0.1%	-2	-33.3%
Two or more	10	0.2%	35	0.9%	63	1.6%	68	1.8%	100	2.7%	90	900.0%
Unknown	129	3.1%	69	1.7%	54	1.4%	78	2.1%	90	2.4%	-39	-30.2%
Total	4221	100.0%	4041	100.0%	3861	100.0%	3779	100.0%	3736	100.0%	-485	-11.5%

Sources for these tables are census date HEPC files.
Data are for credit students only.

Note. As of 2009-10, the new federal categories for race and ethnicity are in use.

Prior to 2009-10, the race / ethnicity classifications were mutually exclusive (only one could be selected). They were abbreviated as follows.

- Black / Af. Amer:** Black or African American
- Amer. Ind. / Alaskan:** American Indian / Native American or Alaskan
- Asian / Pac. Isl.:** Asian or Pacific Islander
- Hispanic:** Hispanic
- White:** White / Caucasian
- Unknown / NR:** Unknown or not reported

Beginning in 2009-10, the following changes were made.

Hispanic is a separate ethnicity designation, independent of the race categories.

The two categories **Asian** and **Native Hawaiian or other Pacific Islander** replace the single category **Asian / Pac. Isl.**

Two or more includes those students claiming two or more races. (More than one race category can be selected.)

Table 32. Shepherd University FTE by Department and Instructor

Dept	L_name	F_name	Faculty UG FTE	Student UG FTE	UG S/F Ratio	Faculty G FTE	Student G FTE	G S/F Ratio
0000	ALEXANDER	KEITH	.25	2.60	10.40	.	.	.
	ALLISON	ELVIRA	.25	2.40	9.60	.	.	.
	ANDERSON	SCOTT	.08	.53	6.40	.	.	.
	BRASHER	SALLY	.25	3.80	15.20	.	.	.
	CANTRELL	MARK	.25	3.80	15.20	.	.	.
	COPNEY	CYNTHIA	.08	1.00	12.00	.	.	.
	COYLE	MARY	.08	1.07	12.80	.	.	.
	DUVALL	DANIELLE	.08	.27	3.20	.	.	.
	ELLZEY	MARY	.25	3.80	15.20	.	.	.
	GARLAND	AMELIA	.08	.93	11.20	.	.	.
	GROSS	EMILY	.17	1.83	11.00	.	.	.
	HILLEARY	MELISSA	.08	.67	8.00	.	.	.
	HOLLIDAY	SHANNON	.16	2.00	12.29	.	.	.
	KRANTZ	RACHEL	.08	.73	8.80	.	.	.
	MEADS	RACHAEL	.08	1.00	12.00	.	.	.
	MYERS	MARY	.08	.60	7.20	.	.	.
	NIXON	TIMOTHY	.25	2.60	10.40	.	.	.
	PIPER	JONATHAN	.08	.73	8.80	.	.	.
	PRICE MASON	KRISTAN	.25	2.93	11.73	.	.	.
	REICH	CHRISTINA	.08	.73	8.80	.	.	.
	RICKETTS	MICHELLE	.17	1.57	9.40	.	.	.
	ROCKWELL	GENA	.08	.67	8.00	.	.	.
	ROWE	TAJMARIE	.08	1.07	12.80	.	.	.
	SANDY	JULIA	.25	3.80	15.20	.	.	.
	SANTANA	BRIAN	.08	1.13	13.60	.	.	.
	SEFFERS	TRACY	.08	.60	7.20	.	.	.
	SHAFFER	STEVEN	.08	1.33	16.00	.	.	.
	STAR	YIN	.08	.47	5.60	.	.	.
	WILSON	CHRISTOPHER	.17	2.60	15.60	.	.	.
Subtotal dept			4.08	47.27		.	.	
ACCT	HAMOOD	ROGER	.75	12.20	16.60	.	.	.
	SESLAR	SCOTT	1.00	14.60	14.60	.	.	.

Fall 2017: SU FTEs by Department

Dept	L_name	F_name	Faculty UG FTE	Student UG FTE	UG S/F Ratio	Faculty G FTE	Student G FTE	G S/F Ratio
	VANCE	CYNTHIA	1.00	14.40	16.00	.	.	.
Subtotal dept			2.75	41.20		.	.	
BADM	AYTAC	BERRIN50	3.25	6.50
	BARNETT	ANDRO25	.75	3.00
	BUTLER	RANDOLPH25	4.50	18.00
	DAILEY	MICHAEL	.75	11.20	14.93	.	.	.
	DEMERRITT	GORDON	.75	10.80	14.40	.25	4.25	17.00
	DIXON	MICHAEL	.50	12.80	25.60	.25	6.00	24.00
	FILES	MICHELLE25	3.50	14.00
	FRYE	HOLLY	.25	3.40	13.60	.	.	.
	GOCMEN	TUNCER50	7.00	14.00
	GOOLSBY	CAROL	.25	3.20	12.80	.	.	.
	GROSS	DAVID	.75	16.20	21.60	.	.	.
	HILLMAN	DONALD	.75	13.00	17.33	.	.	.
	ISHERWOOD	ALEX50	5.00	10.00
	LARSON	LINDSEY	.50	10.00	20.00	.	.	.
	LEGGETT	LANA25	4.00	16.00
	LYNCH	MICHAEL	1.00	13.00	13.00	.	.	.
	MARTZ	WILLIAM	.25	1.20	4.80	.48	5.00	10.34
	MULFORD	PETER25	1.00	4.00
	REID	KATHLEEN	.25	10.20	40.80	.	.	.
	SANDSTROM	DIRK75	4.50	6.00
	SCALES	CINDA	1.00	9.80	9.80	.	.	.
	SCOTT	JANINE	1.00	16.20	16.20	.	.	.
	SHAW	MARY25	3.00	12.00
	SHERWOOD	PATRICIA	.25	3.00	12.00	.	.	.
	TOUHIDI	BEHZAD	.50	9.60	19.20	.	.	.
	VANCE	CYNTHIA25	3.75	15.00
	WEST	JIMMIE	.25	3.00	12.00	.	.	.
	YORK	JUDY	.25	2.40	9.60	.25	2.00	8.00
Subtotal dept			9.25	149.00		5.23	57.50	
BIOL	AMSBERRY	LINDSAY	.67	12.27	18.40	.	.	.
	ANDERSEN	ELLEN	.33	6.40	19.20	.	.	.
	CONLEY	RUTH	1.00	18.13	18.13	.	.	.

Fall 2017: SU FTEs by Department

Dept	L_name	F_name	Faculty UG FTE	Student UG FTE	UG S/F Ratio	Faculty G FTE	Student G FTE	G S/F Ratio
	GILKERSON	JONATHAN	1.00	16.53	14.40	.	.	.
	HENDRICKSONLAMB	SHER	.67	9.07	13.60	.	.	.
	MCKENNA	KERRY	.67	12.27	18.40	.	.	.
	MENKE	JAY	1.17	30.67	26.29	.	.	.
	PENNOCK	DAVID	.67	12.00	18.00	.	.	.
	PLAUTZ	CAROL	1.00	13.87	15.20	.	.	.
	ROBERTSON	LAURA	1.00	17.07	16.60	.	.	.
	STEFFEN	JOHN	1.00	14.13	14.13	.	.	.
	WARD	MARY	.67	12.27	18.40	.	.	.
	WING	DAVID	1.45	16.00	10.47	.	.	.
	Subtotal dept		11.28	190.67		.	.	
CAT	BAILEY	LAURA	.50	10.00	20.00	.	.	.
	BENEFIEL	CHRISTIAN	1.00	9.00	7.07	.	.	.
	BOGCESS	EVAN	.48	5.00	10.40	.	.	.
	BRUNER	RICK	1.00	8.40	9.07	.	.	.
	COHEN-REISMAN	PAUL	.75	7.20	9.60	.	.	.
	COLTRIN	CHRISTOPHER	1.25	19.80	14.70	.	.	.
	CRAIG	JAMES	.75	17.00	22.67	.	.	.
	EVANISKO	SONYA	1.00	10.00	11.73	.25	.25	1.00
	FARMER	ROBERT	.50	6.20	12.40	.	.	.
	HAMANN	BRADFORD	1.00	11.80	12.40	.	.	.
	HERENDEEN	EDWARD	.75	.80	1.00	.	.	.
	KAINEG	KRISTIN	1.00	10.60	11.33	.	.	.
	KUGLER	TRENT	.25	.40	1.60	.	.	.
	LEVITON	ADAM	.25	2.00	8.00	.	.	.
	MENDEZ	MICHAEL	.75	17.60	23.47	.	.	.
	MODLER	DAVID	.50	4.80	9.60	.	.	.
	NEVE	ERIN	.98	11.20	11.43	.	.	.
	SMITH	RHONDA	.50	7.80	15.60	.	.	.
	Subtotal dept		13.20	159.60		.25	.25	
CHEM	BOZENKO	JOSEPH	.25	1.80	7.20	.	.	.
	COLE	JACQUELYN	1.33	23.47	17.70	.	.	.
	DILELLA	DAN	.79	12.27	11.50	.	.	.
	HASSLER	KYLE	1.25	26.40	21.12	.	.	.

Fall 2017: SU FTEs by Department

Dept	L_name	F_name	Faculty UG FTE	Student UG FTE	UG S/F Ratio	Faculty G FTE	Student G FTE	G S/F Ratio
	LI	MENGYANG	1.00	14.73	12.65	.	.	.
	MADER	JORDAN	1.00	17.53	19.69	.	.	.
	WARBURTON	ROBERT	.42	10.40	24.96	.	.	.
Subtotal dept			6.03	106.60		.	.	
COMM	BLACK	THOMAS	.50	7.40	14.80	.	.	.
	FRIDGEN	PATRICIA	.50	7.60	15.20	.	.	.
	KUSHIN	MATTHEW	1.00	13.40	13.40	.	.	.
	LEVINE	MONICA	1.00	14.07	14.07	.	.	.
	MASON	CECELIA	.25	2.40	9.60	.	.	.
	MCGOUGH	MICHAEL	.25	2.80	11.20	.	.	.
	MCKAHAN	JASON	1.00	10.80	10.80	.	.	.
	MESSERLI	SHERRI	.75	12.00	16.00	.	.	.
	REILLY	CHERYL	.50	8.00	16.00	.	.	.
	WILLIAMS	KEVIN	.99	15.20	15.39	.	.	.
Subtotal dept			6.74	93.67		.	.	
CSME	ADAMS	KAREN	1.00	15.73	15.73	.	.	.
	ADELS	JEFFREY	.25	6.00	24.00	.	.	.
	GHAHREMANI	MOHAMMADREZA	1.00	6.87	6.00	.	.	.
	GIL-ZAMBRANO	JOSE	.75	19.60	26.13	.	.	.
	GORNEFF	SERGE	.50	8.60	17.20	.	.	.
	GUZIDE	OSMAN	1.00	12.80	13.07	.	.	.
	LIAO	WEIDONG	1.08	14.07	12.98	.25	.75	3.00
	MARTIN	NICHOLAS	1.25	16.20	12.07	.	.	.
	MILLER	JASON	1.00	17.40	17.47	.	.	.
	MILLS	DONALD	1.25	10.27	8.36	.25	.50	2.00
	MIRDAMADI	REZA	1.17	18.33	9.57	.	.	.
	MORTENSEN	YOONJA	.75	18.40	24.53	.	.	.
	PAGE	LAURA	.74	13.00	17.59	.	.	.
	RAY	GEORGE	.75	13.80	19.00	.	.	.
	SPURIA	LORI	.25	6.00	24.00	.	.	.
	WANG	ZHIJUN	.99	12.20	12.38	.	.	.
	WANG	QING	1.00	15.13	14.50	.	.	.
	WOJTOWICZ	RALPH	1.00	14.40	12.27	.	.	.
Subtotal dept			15.72	238.80		.50	1.25	

Fall 2017: SU FTEs by Department

Dept	L_name	F_name	Faculty UG FTE	Student UG FTE	UG S/F Ratio	Faculty G FTE	Student G FTE	G S/F Ratio
ECFN	BROPLEH	RUDOLPH	.75	11.00	14.67	.	.	.
	GOCMEN	TUNCER	.75	11.00	16.20	.	.	.
	HOY	KYLE	1.00	16.20	16.20	.	.	.
	KINNEY	LINDA	1.00	15.40	14.00	.	.	.
	REID	KATHLEEN	.50	7.20	14.40	.	.	.
	SCHARMER	ROBERT	.50	8.00	16.00	.	.	.
	SWEENEY	CAROL	.25	3.40	13.60	.	.	.
	XIE	YUYING	1.00	17.40	17.40	.	.	.
Subtotal dept			5.75	89.60		.	.	
EDUC	ALLISON	ELVIRA	.21	.67	3.20	.	.	.
	BAKER	HELEN	3.08	16.73	9.40	1.00	1.00	1.00
	BURKE	DAWNE	.75	9.00	13.40	.25	2.25	9.00
	COLE	TAUNA	.83	10.93	13.12	.25	.50	2.00
	GEESAMAN	MARY	.25	.60	2.40	.	.	.
	HANNAH	CORNEILA	.92	10.20	11.41	.	.	.
	HARGROVE	DORI	1.00	15.13	15.13	.	.	.
	JOHNSON	LEANN	.42	5.33	12.80	.	.	.
	KENNARD	DOUGLAS	.58	5.47	7.80	.	.	.
	KEPNER	TERRESA	1.40	7.20	5.14	.	.	.
	KIRBY	LINDA25	.25	1.00
	LUTMAN	MARGARET	.25	.20	.80	.25	.50	2.00
	MITCHELL	BELINDA	1.00	11.80	12.93	.25	.25	1.00
	MODLER	DAVID	.25	1.00	4.00	.25	.50	2.00
	MORREALE	DIEDRE	.50	4.80	9.60	.	.	.
	PRICE	ANDREA	.50	3.40	6.80	.	.	.
	SWARTZ	SUZANNE25	.50	2.00
	TOOLE	GEORGIANN	.25	2.60	10.40	1.25	7.75	6.20
TUTTLE	JAMES	.75	4.80	6.20	.25	4.00	16.00	
Subtotal dept			12.94	109.87		4.25	17.50	
ENGL	BARRETT	JOYCE	.50	4.20	8.40	.	.	.
	BERENSCHOT	DENIS	.99	14.80	12.16	.	.	.
	CANTRELL	MARK	.25	2.40	9.60	.	.	.
	ELLZEY	MARY	.75	4.28	6.28	.25	.25	1.00
	GIBSON	ALAN	.25	2.25	9.00	.	.	.

Fall 2017: SU FTEs by Department

Dept	L_name	F_name	Faculty UG FTE	Student UG FTE	UG S/F Ratio	Faculty G FTE	Student G FTE	G S/F Ratio
	GOODELL	CHRISTOPHER	.75	7.00	9.33	.	.	.
	HANRAHAN	HEIDI	1.00	16.80	16.80	.	.	.
	JARMAN	LOIS	.25	.75	3.00	.	.	.
	KRANTZ	RACHEL	1.00	8.60	8.60	.	.	.
	LAWRENSON	WILLIAM	.75	11.00	14.67	.	.	.
	LEWIN	JAMES	1.00	9.80	9.80	.	.	.
	MEADS	RACHAEL25	.25	1.00
	NIXON	TIMOTHY	.75	11.80	15.73	.	.	.
	PACI	JAMIE	.25	2.80	11.20	.	.	.
	PATE	JAMES	1.00	12.20	12.20	.	.	.
	SANDY	JULIA	.25	.86	3.43	.	.	.
	SANTANA	BRIAN	1.25	18.40	14.72	.	.	.
	SHORR-PARKS	SADIE	.75	12.00	16.00	.	.	.
	SHURBUTT	SYLVIA	.75	2.80	4.20	.50	1.25	2.50
	SLOCUM-SCHAFFER	STEPHANIE	.25	.86	3.43	.	.	.
	SNIDER	CARA	.75	8.00	10.67	.	.	.
	STUCKEY	AMANDA	.75	11.80	15.73	.	.	.
	SUAREZBUDENBEND	EVA-MARIA	.99	11.20	9.19	.	.	.
	TAYLOR	SHELBY	.25	4.00	16.00	.	.	.
	TUTTLE	JAMES	.08	.07	.80	.	.	.
	WEINBERG	MARC	.25	2.20	8.80	.	.	.
	WENGER	CHRISTY	.50	4.40	8.80	.	.	.
	WILLIAMS	HANNAH	.75	11.40	15.20	.	.	.
	WILSON	CHRISTOPHER	1.22	19.40	15.86	.	.	.
Subtotal dept			18.28	216.07		1.00	1.75	
ENPS	ADELS	JEFFREY	.33	3.60	10.80	.	.	.
	BEST	JASON	1.17	17.73	9.20	.	.	.
	MADISON	MARK	.25	3.60	14.40	.	.	.
	MATHEWS	CLARISSA	.75	12.87	17.18	.	.	.
	MELTON	CECILIA	.33	4.20	12.60	.	.	.
	MURPHY	SYTIL	1.00	10.67	8.80	.	.	.
	SHAFFER	STEVEN	.67	11.20	16.80	.	.	.
	SNYDER	EDWARD	1.00	14.93	16.20	.	.	.
	VANCE	JOSHUA	.33	6.13	18.40	.	.	.

Fall 2017: SU FTEs by Department

Dept	L_name	F_name	Faculty UG FTE	Student UG FTE	UG S/F Ratio	Faculty G FTE	Student G FTE	G S/F Ratio
	VILA	PETER	1.00	15.80	16.10	.	.	.
Subtotal dept			6.83	100.73		.	.	
FACS	CORPUS	KATHLEEN	.99	13.00	13.55	.	.	.
	DOBISH	HEIDI	.25	3.60	14.40	.	.	.
	EGRESS	AMY	.50	8.20	16.40	.	.	.
	FLETCHER	ARNETTA	.75	12.60	16.80	.	.	.
	MCCAULEY-TOKACH	DEBRA	.25	5.40	21.60	.	.	.
	MILLER	JENNIFER	.58	7.93	13.60	.	.	.
	STAYMAN	BRANDY	.25	7.20	28.80	.	.	.
Subtotal dept			3.57	57.93		.	.	
HIST	ALEXANDER	KEITH	.25	4.80	19.20	.	.	.
	BANKHURST	BENJAMIN	.98	17.60	17.91	.25	.25	1.00
	BRASHER	SALLY	.74	12.00	16.80	.	.	.
	BROOMALL	JAMES	.47	10.00	20.80	.25	.25	1.00
	BRUMAGE	JODY	.21	1.20	5.60	.	.	.
	DELGALLO	DINO	.50	9.80	19.60	.	.	.
	GORDON	DAVID	.75	14.40	19.20	.	.	.
	MARJENHOFF	WILLIAM	.25	5.20	20.80	.	.	.
	MEADS	RACHAEL	.25	1.80	7.20	.	.	.
	PAULEY	DOREEN	.25	5.00	20.00	.	.	.
	PEREGO	ELIZABETH	.98	18.40	16.80	.	.	.
	POLLARD	ROBERT	.25	5.20	20.80	.	.	.
	SANDY	JULIA	.83	9.40	12.20	.	.	.
	SMITH	BYRON	.23	2.00	8.80	.	.	.
	WYATT	JAMES	.25	4.80	19.20	.	.	.
Subtotal dept			7.19	121.60		.50	.50	
HPER	ANDROZZI	JARED	1.00	11.40	13.20	.	.	.
	BARNETT	ANDRO	2.33	28.60	13.28	.	.	.
	BOSLEY	CASSIE	.17	2.33	14.00	.	.	.
	CATER	MONTE	.25	1.80	7.20	.	.	.
	CLUESMAN	JAMIE	.50	12.20	24.40	.	.	.
	CORRELL	JESSE	.25	4.80	19.20	.	.	.
	DANIELS	SAMUEL	.25	2.27	9.07	.	.	.
	DEJARNETT	DANA	.25	4.40	17.60	.	.	.

Fall 2017: SU FTEs by Department

Dept	L_name	F_name	Faculty UG FTE	Student UG FTE	UG S/F Ratio	Faculty G FTE	Student G FTE	G S/F Ratio
	DOWNIE	LISA	.33	4.93	14.40	.	.	.
	DUDASH	VALERIE	.08	.87	10.40	.	.	.
	DUDASH	MICHAEL	.33	2.67	8.00	.25	.25	1.00
	ECKLEBERRY	JENNA	.25	2.20	8.80	.	.	.
	EICHELBERGER	DARRELL	.50	6.20	12.40	.	.	.
	FINCHAM	DAVID	.25	1.40	5.60	.	.	.
	GRAHAM	JESSICA	1.50	18.00	12.00	.	.	.
	HALL	MELISSA	1.00	13.60	11.73	.	.	.
	HOEKSTRA	ALEXANDER	.25	3.60	14.40	.	.	.
	HOVATTER	RHONDA	1.00	16.40	16.40	.	.	.
	KENDIG	STACEY	1.75	19.60	11.20	.	.	.
	KLINE	JOSHUA	.25	3.87	15.47	.	.	.
	LANE	SHATORA	.25	2.20	8.80	.	.	.
	LAWLESS	DESMOND	1.17	23.67	18.59	.	.	.
	LESLIE	MARISSA	.50	10.00	20.00	.	.	.
	LEWIS	BRYAN	.50	9.40	18.80	.	.	.
	LIVENGOOD	JENNIFER	.25	5.20	20.80	.	.	.
	LOPEZ	LESLIE	.25	4.80	19.20	.	.	.
	MCCOOK	ERNEST	.25	3.40	13.60	.	.	.
	MCNEILL	CHRISTOPHER	.50	8.80	17.60	.	.	.
	MILLER	MATTHEW	.25	2.40	9.60	.	.	.
	NAMOLIK	JUSTIN	.50	2.40	4.80	.	.	.
	PLACE	GREGORY	2.25	24.40	13.69	.	.	.
	PULLEN	KYLE	.17	1.00	6.00	.	.	.
	SAMPSELL	ERIC	.25	2.80	11.20	.	.	.
	SEELEY	JENNIFER	.25	3.00	12.00	.	.	.
	SUTHERLAND	DYLAN	.50	8.20	16.40	.	.	.
	THAYIL	JONATHAN	.25	6.40	25.60	.	.	.
	TRACY	JULIA	.50	8.40	16.80	.	.	.
	WILHELM	MARY JO KELL	.25	2.80	11.20	.	.	.
	WILLAUER	TRACY	.75	12.00	16.00	.	.	.
	WOLF	KARL	.25	4.20	16.80	.	.	.
	Subtotal dept		22.33	306.60		.25	.25	

Fall 2017: SU FTEs by Department

Dept	L_name	F_name	Faculty UG FTE	Student UG FTE	UG S/F Ratio	Faculty G FTE	Student G FTE	G S/F Ratio
LBSC	NEAL	LAURA	.17	2.33	14.00	.	.	.
Subtotal dept			.17	2.33		.	.	
MUSC	CONTRERAS AMPU	GIULIANA PAO	.06	.13	2.40	.	.	.
	ADAMS	KURTIS	1.08	5.87	5.26	.	.	.
	CAMBREL	BRIAN	.50	2.53	5.07	.	.	.
	CAMERON	WAYNE	.33	1.77	5.39	.	.	.
	CARLSON	RACHEL	.61	6.50	10.13	.	.	.
	CARTER	DANIEL	.08	.27	3.20	.	.	.
	COOK	MARK	1.06	11.87	11.23	.	.	.
	DROSINOS	DAVID	.25	1.20	4.60	.	.	.
	FEASLEY	WILLIAM	.25	1.30	5.20	.	.	.
	GONZOL	DAVID	.92	10.93	11.45	.	.	.
	HIPPENSTEEL	SCOTT	.63	7.90	17.39	.	.	.
	KING	MARK	.08	.13	1.60	.	.	.
	KOCH	JEREMY	.25	.80	2.80	.	.	.
	LIAO	YU-HSUAN	1.24	7.47	6.15	.	.	.
	MARTIN	JAMES	.08	.07	.80	.	.	.
	MOORE	BROOKE	.75	3.33	3.20	.	.	.
	MUNRO	ANNE	.33	.93	2.80	.	.	.
	PACE	KEVIN	.49	.83	1.66	.	.	.
	PALMER	DANE	.33	.87	2.60	.	.	.
	PETZOLD-CARPENT	SUSAN	.75	12.20	16.27	.	.	.
	POLONCHAK	RICHARD	.13	.10	.80	.	.	.
	REGAN	MELANIE	.24	1.30	4.37	.	.	.
	RENNINGER	LAURA	.33	5.00	15.00	.	.	.
	ROBINSON	ROBERT	.57	7.10	10.11	.	.	.
	ROMINE	EMILY	.08	.60	7.20	.	.	.
	SHAW	RONNIE	.08	.20	2.40	.	.	.
	SHOOK	GREGORY	.06	.10	1.60	.	.	.
	STURM	JEANNINE	.17	.87	5.20	.	.	.
	TUDOR	ROBERT	.42	3.00	7.67	.	.	.
	WALKER	JOSHUA	.15	.23	1.53	.	.	.
	WILDMAN	SIMON	.25	.47	1.80	.	.	.
Subtotal dept			12.57	95.87		.	.	

Fall 2017: SU FTEs by Department

Dept	L_name	F_name	Faculty UG FTE	Student UG FTE	UG S/F Ratio	Faculty G FTE	Student G FTE	G S/F Ratio
NURS	ALBRIGHT	CAROLYN	.50	15.67	31.33	.	.	.
	ANDERSON	CHARLOTTE	.67	3.73	5.60	.	.	.
	BURKEY	DORIS67	4.67	7.00
	CLAYTON	LAURA58	2.75	4.71
	COYLE	MARY	.42	9.00	21.60	.25	2.25	9.00
	DUFFEY	TAMMY	.33	2.13	6.40	.	.	.
	FETTY	ANGELA	.25	10.60	42.40	.	.	.
	GROVES	MICHAEL	.50	11.80	23.60	.58	4.67	8.00
	HANCOCK	MARY	.75	18.20	24.27	.	.	.
	MAILEY	SHARON	.17	2.00	12.00	.	.	.
	MOTT	BARBARA	.67	20.80	31.20	.	.	.
	PELFREY	AMY	.33	2.13	6.40	.	.	.
	RINI	ELIZABETH	1.00	30.80	30.80	.25	3.00	12.00
	SPENCER	BARBARA	.58	16.93	29.03	.25	1.00	4.00
	WATSON HUFFER	KELLY	.58	11.80	20.23	.33	1.33	4.00
Subtotal dept			6.75	155.60		2.92	19.67	
PSGS	ADAMS-SQUARE	GRACE	.25	3.40	13.60	.	.	.
	DELLIGATTI	ANTHONY	.25	4.80	19.20	.	.	.
	GUIRGUIS	MAGED	.75	10.20	14.80	.	.	.
	HOLTSLAG	AREND	.98	11.20	11.89	.	.	.
	ISNER	JOHN	.50	7.60	15.20	.	.	.
	ROBBINS	JOSEPH	.75	10.00	13.60	.	.	.
	SLOCUM-SCHAFFER	STEPHANIE	1.17	14.07	8.68	.	.	.
Subtotal dept			4.65	61.27		.	.	
PSYC	BERGER	ETANA	.25	3.40	13.60	.	.	.
	DAILY	LARRY	1.14	15.27	13.70	.	.	.
	DOBISH	HEIDI	.25	2.60	10.40	.	.	.
	GARLAND	JOHNNIE50	6.00	12.00
	GAVLAS	JOHN	.75	13.40	18.00	.	.	.
	HOUSTON	SUZANNE	.50	6.40	12.80	.	.	.
	LEVITAN	LINDSEY	1.42	12.00	7.45	.	.	.
	LOVELACE	CHRISTOPHER	.75	12.40	16.80	.	.	.
	MCCAULEY-TOKACH	DEBRA	.50	6.60	13.20	.	.	.
	MERZ	JOSEPH	1.00	16.60	16.60	.	.	.

Fall 2017: SU FTEs by Department

Dept	L_name	F_name	Faculty UG FTE	Student UG FTE	UG S/F Ratio	Faculty G FTE	Student G FTE	G S/F Ratio
	MILLS	MARSHA	.25	2.60	10.40	.	.	.
	MURTAGH	ANNE	1.25	13.20	13.50	.	.	.
	ROWE	KIMBERLY	.50	8.80	17.60	.	.	.
	SECHLER	ELIZABETH25	2.25	9.00
	SEGAR	THOMAS25	3.50	14.00
	SEIDMAN	RUTH	.75	12.80	16.20	.	.	.
	SPENCER	SHANAN	.25	3.00	12.00	.	.	.
	STEVENS	RICHARD25	4.75	19.00
	WENDLE	ANN25	3.25	13.00
	WHITEHOUSE	EMILEIGH	.50	9.40	18.80	.	.	.
	Subtotal dept		10.06	138.47		1.50	19.75	
SOGE	ALEXANDER	KEITH	.25	1.80	7.20	.	.	.
	ANTHONY	ROBERT	1.00	12.20	13.73	.	.	.
	BERGMAN	ROLAND	1.00	13.00	10.53	.	.	.
	COBIAN	CHRISTOPHER	.25	5.20	20.80	.	.	.
	DARBOE	MOMODOU	1.00	10.80	10.80	.	.	.
	DEWITT	AMY	1.00	20.20	20.20	.	.	.
	FLEMING	MONICA	.50	8.40	16.80	.	.	.
	HIXSON	DAVID	.25	5.00	20.00	.	.	.
	HOFE	C	.50	3.40	6.80	.	.	.
	HOWARD-BOSTIC	CHIQUITA	1.50	21.60	15.70	.	.	.
	HULSE	CHARLES	1.00	11.40	11.40	.	.	.
	LEGREID	ANN	.25	1.80	7.20	.	.	.
	LEROI	MARTHA	.50	8.40	16.80	.	.	.
	MARINO	EUGENE	.25	.80	3.20	.	.	.
	PATTERSON	STEVEN	.75	10.60	15.80	.	.	.
	PHILLIPS	FRANCINE	.25	1.00	4.00	.	.	.
	SNYDER	RICHARD	.50	11.40	22.80	.	.	.
	SPEAKER	HOMER	.25	1.20	4.80	.	.	.
	Subtotal dept		11.00	148.20		.	.	
SOWK	CLINE	CRAIG	.75	14.20	18.93	.	.	.
	CRAWLEY-WOODS	GERALDINE	.75	11.60	15.47	.	.	.
	GARZON HAMPTON	AMY	.50	5.40	10.80	.	.	.
	GREEN	KAREN	.75	7.80	8.30	.	.	.

Fall 2017: SU FTEs by Department

Dept	L_name	F_name	Faculty UG FTE	Student UG FTE	UG S/F Ratio	Faculty G FTE	Student G FTE	G S/F Ratio
	MANZANO	KELLI	.25	6.80	27.20	.	.	.
	RAWCLIFFE	CHRISTIAN	.25	1.40	5.60	.	.	.
Subtotal dept			3.25	47.20		.	.	
STRE	MCBRIDE	MELISSA	.67	7.47	11.20	.	.	.
	NUREDINOSKI	YILDIZ	.83	9.33	11.20	.	.	.
Subtotal dept			1.50	16.80		.	.	
STRM	BAILEY	WILLIAM	.33	5.73	17.20	.	.	.
	BANOR	MAXWELL	.83	14.13	16.96	.	.	.
	KELLY	ROBERT	.17	2.67	16.00	.	.	.
	NELLES	FRANCOISE	.67	10.13	15.20	.	.	.
	PRICE	VERONICA	.17	2.80	16.80	.	.	.
	WHEELER	MICHELLE	.33	5.33	16.00	.	.	.
Subtotal dept			2.50	40.80		.	.	
Grand Total			198.39	2735.73		16.40	118.42	