

Shepherd University Academic Affairs Data 2012-2016

A. Students by Residency

- Table 1. Paid student FTE by Residency, student FTE by residency, headcount by residency
- Paid student FTE by residency, Fall 2012 – Fall 2016*
 - Student FTE by residency, Fall 2012 – Fall 2016*
 - Student headcount by residency, Fall 2012 – Fall 2016*

B. Undergraduate Students and Faculty

- Table 2. Faculty FTE
- Table 3. Baccalaureate Majors per Department and Majors per Full-Time Faculty
- Majors per Department, Fall 2016*
 - Mean Number of Majors by Department, Fall 2012 - Fall 2016*
 - Change in Ratio of Majors to FT Faculty, Fall 2012 - Fall 2016*
 - Mean Ratios of Majors to FT Faculty, Fall 2012 - Fall 2016*
- Table 4. RBA Majors
- Table 5. Minors by Department
- Minors by Department, Fall 2016*
 - Mean Number of Minors by Department, Fall 2012 - Fall 2016*
- Table 6. Teacher Education Concentrations
- Students in Teacher Education Concentrations, Fall 2016*
 - Mean Numbers of Students in Teacher Education Concentrations, Fall 2012 – Fall 2016*
- Table 7. Baccalaureate Majors per Department and Teacher Education Students by Department of Concentration Advisement
- Total Majors and Teacher Education Students, Fall 2016*
 - Mean Totals of Majors and Teacher Education Students, Fall 2012 – Fall 2016*
- Table 8. FTE Student to FTE Faculty Ratios
- Change in Ratios(FTE Students: FTE Faculty), 2012-2016*
 - Mean Ratios (FTE Students: FTE Faculty), 2012-2016*
- Table 9. Student FTE Generated by Full-Time Faculty to Full-Time Faculty FTE Ratios
- Change in FTE Ratios(FTE Students: FTE Faculty) 2012-2016*
 - Mean FTE Ratios(FTE Students: FTE Faculty) 2012-2016*
- Table 10. Student FTE Generated by Part-Time Faculty to Part-Time Faculty FTE Ratios
- Change in FTE Ratios(FTE Students: FTE Faculty) 2012-2016*
 - Mean FTE Ratios(FTE Students: FTE Faculty) 2012-2016*
- Table 11. Student-to-Faculty FTE Ratios in Lower Level Courses
- Change in Student FTE to Faculty FTE Ratios in Lower Level Courses, 2012-2016*
 - Mean Student FTE to Faculty FTE Ratios in Lower Level Courses, 2012-2016*
- Table 12. Student-to-Faculty FTE Ratios in Upper Level Courses
- Change in Student FTE to Faculty FTE Ratios in Upper Level Courses, 2012-2016*

- b. *Mean Student FTE to Faculty FTE Ratios in Upper Level Courses, 2012-2016*
- Table 13. Graduates from Baccalaureate Programs
 - a. *Average Number of Baccalaureate Degrees by Major, 2011-2012 to 2015-2016*
 - b. *Baccalaureate Graduates in 2015-2016*
- Table 14. SCH per FTE faculty, for non-General Studies / Core Curriculum courses
 - a. *Overall rank, Fall 2016, non-GS/CC courses*
 - b. *Overall rank, Fall 2012-2016, non-GS/CC courses*
- Table 15. SCH per FTE faculty, for General Studies / Core Curriculum courses
 - a. *Overall rank, Fall 2016, GS/CC courses*
 - b. *Overall rank, Fall 2012-2016, GS/CC courses*
- Table 16. Core Curriculum courses by time of day
 - a. *Core Curriculum courses by time of day, Monday-Thursday*
 - b. *Core Curriculum courses by time of day, Friday, weekdays and Saturday*
- Table 17. Core Curriculum courses offered in standard timeslots, weekdays
 - a. *CC courses offered in standard timeslots, weekdays*
- Table 18. Online and hybrid courses, Fall 2012 – Fall 2016
 - a. *Hybrid and online courses, Fall 2012 – Fall 2016*
 - b. *Percentages of hybrid and online courses, Fall 2012 – Fall 2016*

C. Graduate Students and Faculty

- Table 19. Students Enrolled in Graduate Programs
- Table 20. Graduates from Graduate Programs
- Table 21. Graduate Student to Faculty FTE Ratios
 - a. *Mean Change in FTE Ratios (Student FTE: Faculty FTE) for Graduate Courses, 2012-2016*
 - b. *Mean FTE Ratios (Student FTE: Faculty FTE) for Graduate Courses, 2012-2016*

D. Shepherd University Student Demographic Data

- Table 22. Degree Targets
- Table 23. Mean ACT and ACT Equivalent Scores by Residency
- Table 24. Status by Residency, Five-Year Trends
- Table 25. ACT and ACT Equivalent Scores by Residency
- Table 26. Class Level by Residency
- Table 27. Retention of Fall 2015 Freshman Cohort by Residency
- Table 28. Graduation of Fall 2010 Freshman Cohort by Residency
- Table 29. Student Headcount by Registration Type
- Table 30. Student FTE by Registration Type
- Table 31. Student Headcount by Race and Ethnicity

E. Shepherd University Global Information

- Table 32. Shepherd University FTE by Department and Instructor

This Acrobat file has been bookmarked for your convenience. To see bookmarks, click on the “Bookmarks” tab on the left side of the Acrobat window.

Table 1a. Paid student FTE by residency

Residency	SU					2012-2016
	Fall 2012	Fall 2013	Fall 2014	Fall 2015	Fall 2016	% Change
Total	3775.15	3645.28	3463.82	3282.15	3092.02	-18.1%
In-state	2305.68	2227.17	2130.63	2032.13	1954.38	-15.2%
Out-of-state	1469.47	1418.12	1333.18	1250.02	1137.63	-22.6%

Table 1b. Student FTE by residency

Residency	SU					2012-2016
	Fall 2012	Fall 2013	Fall 2014	Fall 2015	Fall 2016	% Change
Total	3773.55	3642.09	3457.76	3282.09	3094.38	-18.0%
In-state	2304.43	2224.27	2127.23	2028.27	1946.90	-15.5%
Out-of-state	1469.12	1417.82	1330.53	1253.82	1147.48	-21.9%

Table 1c. Student headcount by residency

Residency	SU					2012-2016
	Fall 2012	Fall 2013	Fall 2014	Fall 2015	Fall 2016	% Change
Total	4388	4275	4119	3913	3826	-12.8%
In-state	2651	2592	2511	2361	2333	-12.0%
Out-of-state	1737	1683	1608	1552	1493	-14.0%

General Explanation/Definitions.

1. One student *FTE* (full-time equivalent) equals 15 credit hours for baccalaureate students and 12 credit hours for graduate students.
2. The **% change** is the difference between the most recent data and the first column of data, divided by the first column of data.
3. Numbers are for undergraduate and graduate students combined.

Table 2. Faculty FTE

Department						2012-2016	
	Fall 2012	Fall 2013	Fall 2014	Fall 2015	Fall 2016	Mean	% Change
CAT	15.68	14.46	13.75	12.20	12.47	13.71	-20.5%
MCOM	8.75	7.75	7.25	7.50	7.00	7.65	-20.0%
ENGL	22.73	24.34	21.89	19.32	17.78	21.21	-21.8%
HIST	11.74	11.07	9.82	10.31	10.26	10.64	-12.6%
MUSC	14.96	13.32	14.07	15.04	13.22	14.12	-11.6%
<i>A&H</i>	73.86	70.94	66.78	64.37	60.73	67.34	-17.8%
ACCT	3.25	3.25	3.50	3.25	3.00	3.25	-7.7%
BADM	10.50	10.41	11.83	10.37	11.46	10.91	9.1%
ECON / ECFN	6.24	6.25	6.50	5.74	6.00	6.15	-3.8%
PSCI	5.50	7.25	5.25	4.75	5.00	5.55	-9.1%
PSYC	8.75	9.25	9.65	9.87	9.25	9.35	5.7%
SOGE	8.96	9.99	9.50	9.00	10.74	9.64	19.9%
SOWK	3.17	3.42	3.42	3.17	2.67	3.17	-15.8%
<i>B&SS</i>	46.37	49.82	49.65	46.15	48.12	48.02	3.8%
EDUC	10.87	9.86	13.33	12.60	12.36	11.80	13.7%
HPER	20.74	23.75	22.57	22.24	24.58	22.78	18.5%
NURS	8.08	6.83	7.67	7.33	6.92	7.37	-14.4%
<i>E&PS</i>	39.69	40.44	43.57	42.17	43.86	41.95	10.5%
BIOL	11.66	11.50	9.92	11.12	10.33	10.91	-11.4%
CHEM	7.51	6.91	6.53	6.42	6.42	6.76	-14.5%
CSME	16.75	17.57	16.91	16.56	15.32	16.62	-8.5%
ENVS / ENPS	8.78	7.08	7.42	6.33	7.58	7.44	-13.7%
<i>NS&M</i>	44.70	43.06	40.78	40.43	39.65	41.72	-11.3%
Stretch English	2.50	2.17	1.83	1.67	1.33	1.90	-46.8%
Stretch Math	3.00	2.83	2.83	2.83	2.49	2.80	-17.0%
<i>Stretch</i>	5.50	5.00	4.66	4.50	3.82	4.70	-30.5%
Shepherd University	210.12	209.26	205.44	197.62	196.18	203.72	-6.6%

General Explanation/Definitions.

1. One faculty **FTE** (full-time equivalent) equals 12 hours of instructional responsibility. Mass Communications' Fall 2016 FTE of 7.00 accounts for 84 hours of instruction (12*7.00) .
2. The **mean** is the average for five years.
3. The **% change** is the difference between the most recent and the earliest fall semester FTE's divided by the earliest fall FTE. For example, for Mass Communications in Fall 2016, this would be (7.00 - 8.75) / 7.00.
4. Numbers include undergraduate instruction only.

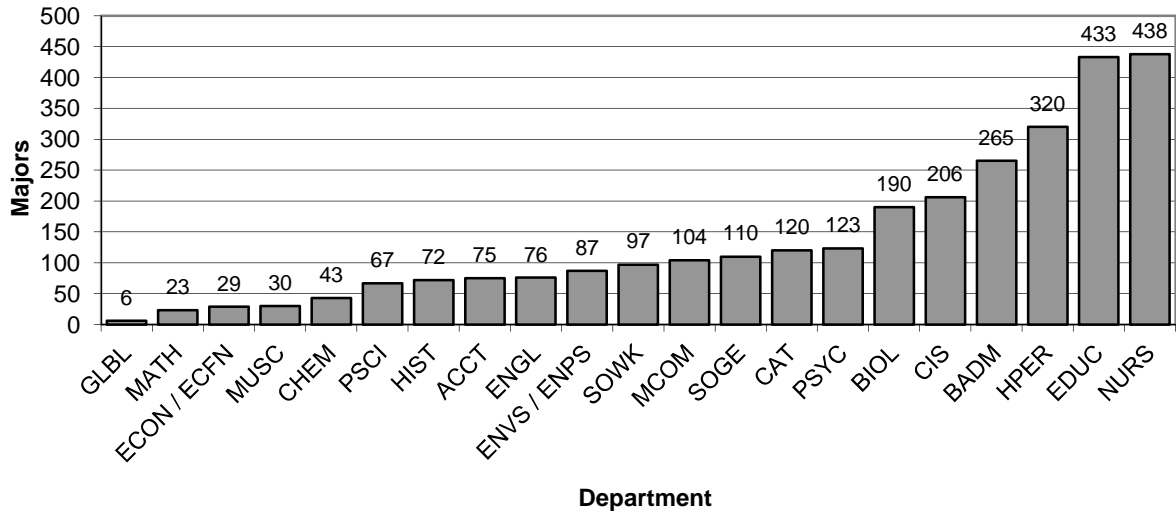
Table 3. Baccalaureate Majors per Department and Majors per Full-Time Faculty

Department	Fall 2012			Fall 2013			Fall 2014			Fall 2015			Fall 2016			Mean	Change	Percentage Change in Majors
	N	FT Fac	N/FT Fac	N	FT Fac	N/FT Fac	N	FT Fac	N/FT Fac	N	FT Fac	N/FT Fac	N	FT Fac	N/FT Fac	N/FT Fac		
CAT	195	10	19.5	172	10	17.2	160	10	16.0	144	9	16.0	120	9	13.3	16.4	-6.17	-38.5%
MCOM	111	5	22.2	124	5	24.8	125	4	31.3	104	4	26.0	104	4	26.0	26.1	3.80	-6.3%
ENGL	118	12	9.8	102	14	7.3	93	13.5	6.9	79	13.5	5.9	76	13.5	5.6	7.1	-4.20	-35.6%
HIST	109	7	15.6	114	7	16.3	104	6	17.3	84	7	12.0	72	7	10.3	14.3	-5.29	-33.9%
MUSC	56	9	6.2	48	8	6.0	39	8	4.9	38	8	4.8	30	8	3.8	5.1	-2.47	-46.4%
<i>A&H</i>	589	43	13.7	560	44	12.7	521	41.5	12.6	449	41.5	10.8	402	41.5	9.7	11.9	-4.01	-31.7%
ACCT	90	4	22.5	86	3	28.7	84	3	28.0	85	3	28.3	75	3	25.0	26.5	2.50	-16.7%
BADM	345	7	49.3	339	8	42.4	316	8	39.5	314	7	44.9	265	6	44.2	44.0	-5.12	-23.2%
ECON / ECFN	34	5	6.8	42	5	8.4	32	5	6.4	32	5	6.4	29	5	5.8	6.8	-1.00	-14.7%
PSCI	98	6	16.3	80	5	16.0	72	5	14.4	81	5	16.2	67	5	13.4	15.3	-2.93	-31.6%
PSYC	184	5	36.8	166	6	16.0	162	6	27.0	132	6	22.0	123	6	20.5	24.5	-16.30	-33.2%
SOGE	142	5.5	25.8	141	6.5	21.7	146	6.5	22.5	117	6.5	18.0	110	6.5	16.9	21.0	-8.90	-22.5%
SOWK	107	3	35.7	105	3	35.0	82	3	27.3	86	3	28.7	97	4	24.3	30.2	-11.42	-9.3%
GLST (no dept affil.)													6	0	N/A	N/A	N/A	N/A
<i>BASS</i>	1000	35.5	28.2	959	36.5	26.3	894	36.5	24.5	847	35.5	23.9	772	35.5	21.7	24.9	-6.42	-22.8%
EDUC	613	14.5	42.3	564	14.5	38.9	539	14.5	37.2	512	13.5	37.9	433	13.5	32.1	37.7	-10.20	-29.4%
HPER	307	9.5	32.3	304	8.5	35.8	314	8.5	36.9	314	8.5	36.9	320	8.5	37.6	35.9	5.33	4.2%
NURS	486	10	48.6	490	11	44.5	454	9	50.4	433	11	39.4	438	13	33.7	43.3	-14.91	-9.9%
<i>E&PS</i>	1406	34	41.4	1358	34	39.9	1307	32	40.8	1259	33	38.2	1191	35	34.0	38.9	-7.32	-15.3%
BIOL	210	8.5	24.7	222	9.5	23.4	204	9.5	21.5	203	9.5	21.4	190	8.5	22.4	22.7	-2.35	-9.5%
CHEM	70	4.75	14.7	63	5.75	11.0	52	5.75	9.0	50	5.75	8.7	43	5.75	7.5	10.2	-7.26	-38.6%
CIS	211	11	21.5	190	11	20.2	193	11	19.6	217	11	22.2	206	11	20.8	20.9	-0.64	-2.4%
MATH	25			32			23			27			23					
ENVS / ENPS	140	7	20.0	115	6	19.2	107	6	17.8	99	6	16.5	87	6	14.5	17.6	-5.50	-37.9%
<i>NS&M</i>	656	31.25	21.0	622	32.25	19.3	579	32.25	18.0	596	32.25	18.5	549	31.25	17.6	18.9	-3.42	-16.3%
Shepherd University	3651	143.8	25.4	3499	146.8	23.8	3301	142.3	23.2	3151	142.3	22.2	2914	143.3	20.3	23.0	-5.06	-20.2%

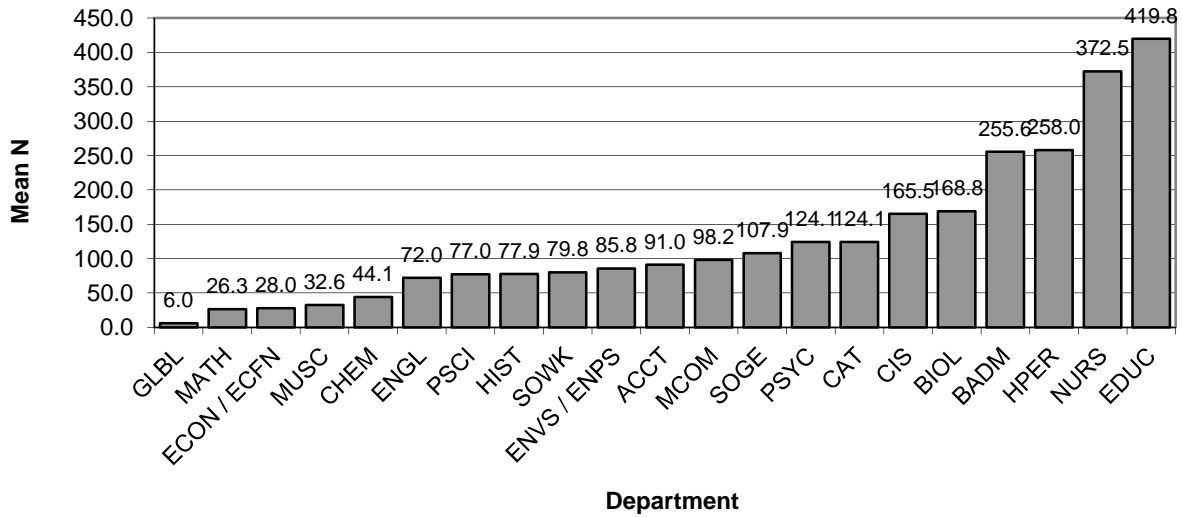
General Explanation/Definitions.

1. **N** is the number of undergraduate students in degree programs offered by the department. This includes first and second majors.
2. **FT Fac** is the number of full-time faculty in the department including visiting faculty. This is generally a count of "bodies" from the faculty list produced by the VPAA's office. Exceptions are where there is a permanent contractual specification of less than full-time; released time is not counted and neither is leave, unless there is a full-time replacement, because those are unlikely to affect the number of majors. Herendeen, Beard, Benedict, Legreid, Hicks, Renninger, Toole, Nolan, and Cantrell are all counted as *half* positions. Warburton is counted as a 75% position. R. Stevens is not counted here, as he works exclusively with graduate students.
3. The **N/FT Fac** is the ratio of students to faculty.
4. The **mean N/FT Fac** is the average N/FT Fac for the years shown.
5. The **change** is the current year's N/FT Fac minus the first year's N/FT Fac.
6. The **percentage change in majors** is the difference between the current year's number of majors and the first year's number of majors, divided by the first year's number of majors.

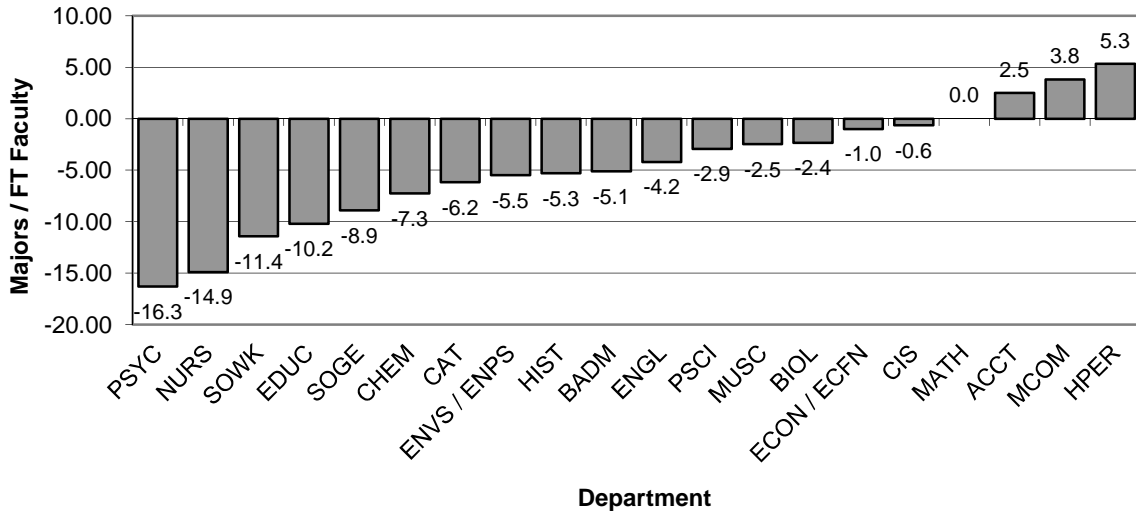
Graph 3A: Majors per Department, Fall 2016
(from Table 3)



Graph 3B: Mean Number of Majors by Department, Fall 2012 - Fall 2016
(from Table 3)



**Graph 3C: Change in Ratio of Majors to FT Faculty,
Fall 2012 - Fall 2016**
(from Table 3)



**Graph 3D: Mean Ratios of Majors to FT Faculty,
Fall 2012 - Fall 2016**
(from Table 3)

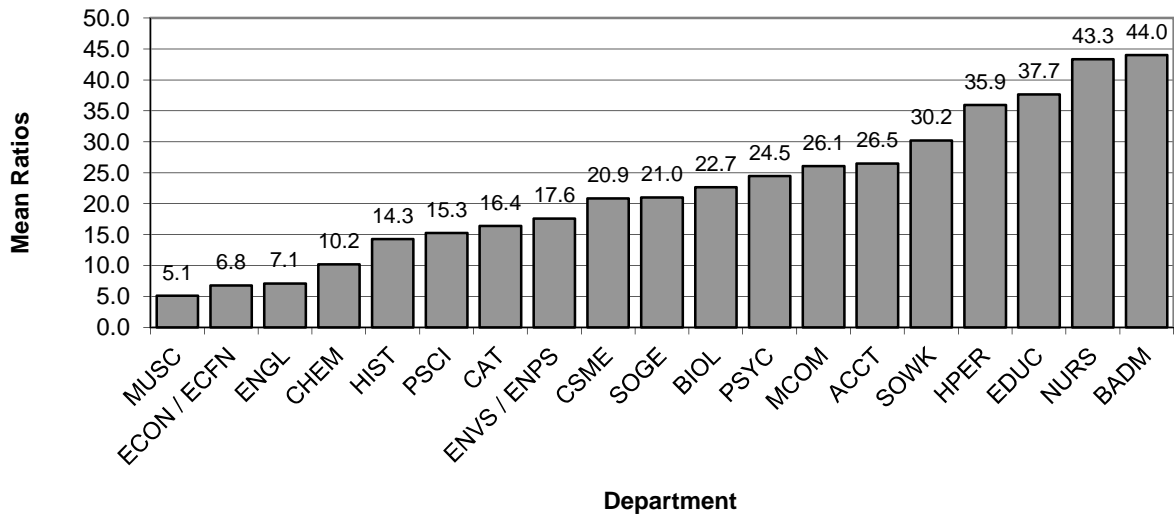


Table 4. RBA majors

RBA	2012	2013	2014	2015	2016
Headcount	150	135	272	147	149
Full-time	91	59	163	46	55
Non-credit				1	0
Part-time	59	76	109	100	94
FTE	104.40	82.77	196.20	77.87	84.67
Average SCH per semester	10.44	9.20	10.82	7.95	8.52
Average age of majors	36.6	37.1	31.5	39.5	38.4
Graduates	102	91	111	88	

Headcount, FTE, average SCH per semester, and average age are calculated for Fall semester of the listed academic year.

Graduates are counted from the fall of the listed year through the summer of the following year. Numbers of graduates are not available for the most recent year listed.

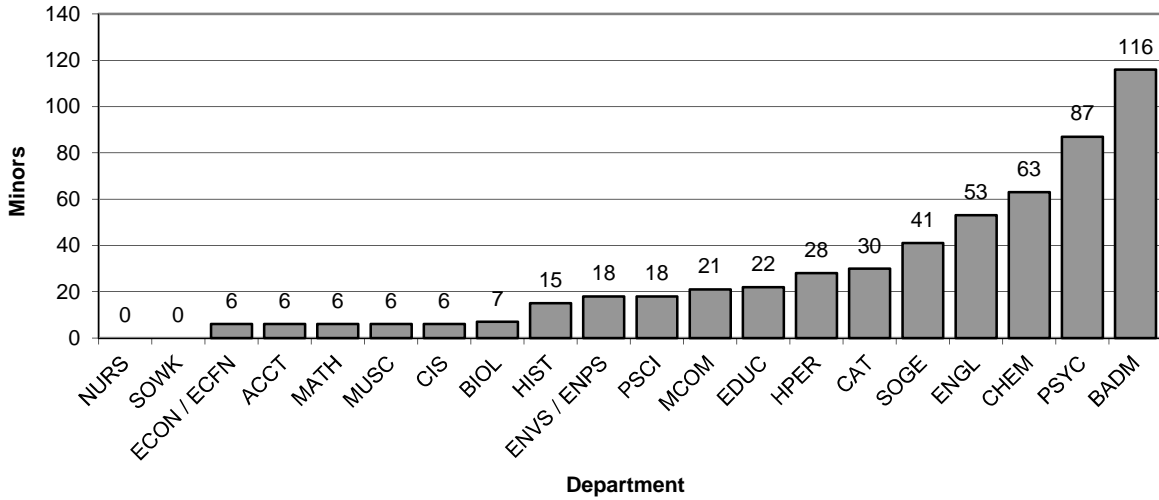
Table 5. Minors by Department

Department	Fall 2012		Fall 2013		Fall 2014		Fall 2015		Fall 2016		2012-2016		
	N	N Change	N	N Change	N	N Change	N	N Change	N	N Change	Mean N	Change	Mean Change
CAT	41	4	34	-7	35	1	40	5	30	-10	36.0	-11.00	-1.40
MCOM	19	-4	26	7	22	-4	23	1	21	-2	22.2	2.0	-0.40
ENGL	62	-25	59	-3	64	5	47	-17	53	6	57.0	-9.0	-6.80
HIST	18	0	21	3	26	5	24	-2	15	-9	20.8	-3.0	-0.60
MUSC	10	-5	15	5	16	1	10	-6	6	-4	11.4	-4.0	-1.80
<i>A&H</i>	150	-30	155	5	163	8	144	-19	125	-19	147.4	-25.0	-11.00
ACCT	6	-4	8	2	17	9	6	-11	6	0	8.6	0.0	-0.80
BADM	107	-3	126	19	120	-6	128	8	116	-12	119.4	9.0	1.20
ECON / ECFN	19	-12	18	-1	10	-8	5	-5	6	1	11.6	-13.0	-5.00
PSCI	26	9	28	2	21	-7	20	-1	18	-2	22.6	-8.0	0.20
PSYC	54	11	73	19	72	-1	89	17	87	-2	75.0	33.0	8.80
SOGE	41	1	32	-9	44	12	49	5	41	-8	41.4	0.0	0.20
SOWK	0	0	0	0	0	0	0	0	0	0	0.0	0.0	0.00
<i>BASS</i>	253	2	285	32	284	-1	297	13	274	-23	278.6	21.0	4.60
EDUC	25	-9	24	-1	20	-4	23	3	22	-1	22.8	-3.0	-2.40
HPER	27	-7	24	-3	24	0	20	-4	28	8	24.6	1.0	-1.20
NURS	0	0	0	0	0	0	0	0	0	0	0.0	0.0	0.00
<i>E&PS</i>	52	-16	48	-4	44	-4	43	-1	50	7	47.4	-2.0	-3.60
BIOL	15	8	16	1	10	-6	12	2	7	-5	12.0	-8.0	0.00
CHEM	68	9	55	-13	46	-9	50	4	63	13	56.4	-5.0	0.80
CIS	15	5	11	-4	5	-6	13	8	6	-7	10.0	-9.0	-0.80
MATH	12	-3	11	-1	9	-2	7	-2	6	-1	9.0	-6.0	-1.80
ENVS / ENPS	21	1	16	-5	11	-5	14	3	18	4	16.0	-3.0	-0.40
<i>NS&M</i>	131	20	109	-22	81	-28	96	15	100	4	103.4	-31.0	-2.20
Shepherd University	586	-24	597	11	572	-25	580	8	549	-31	576.8	-37.0	-12.20

General Explanation/Definitions.

1. **N** is the number of students in minor programs offered by the department.
2. The **N change** is the difference in the number of students in consecutive years.
3. The **mean N** is the mean number of students over the years represented (five years).
4. The **mean change** is the sum of the annual changes divided by the number of annual changes.
5. Women's Studies is not attached to any department. There were fifteen WMST minors in Fall 2016.
6. Appalachian Studies is not attached to any department. There were eleven APPN minors in Fall 2016.

Graph 5A: Minors by Department, Fall 2016
(from Table 5)



Graph 5B: Mean Number of Minors by Department, Fall 2012 - Fall 2016
(from Table 5)

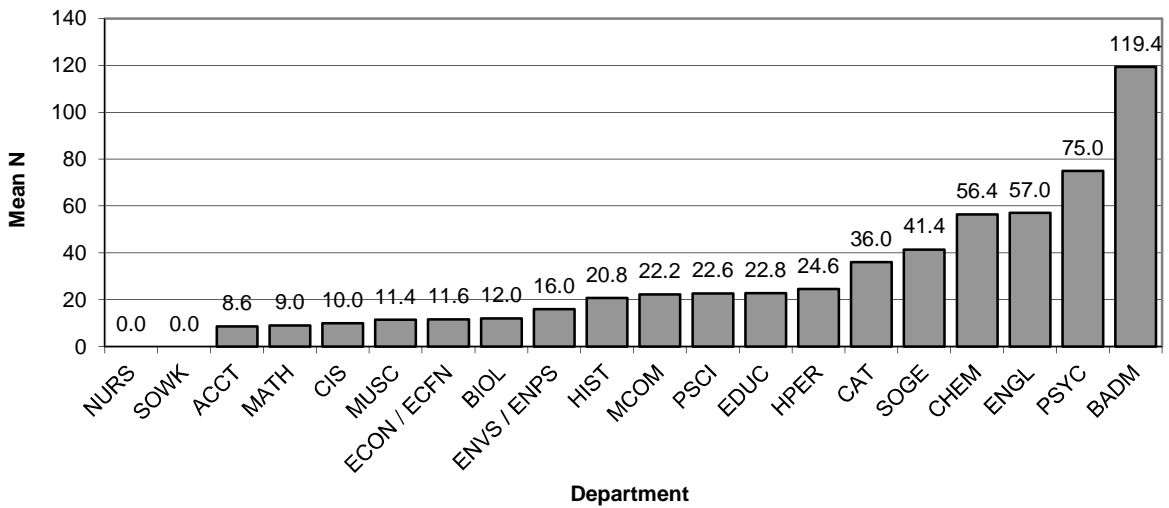


Table 6. Teacher Education Concentrations

Department	Teaching Concentration	Fall 2012	Fall 2013	Fall 2014	Fall 2015	Fall 2016	Mean	Change	Advising F16	
									Fac	Majors
CAT	Art	33	29	27	22	20	26.2	-13	9	40
Biology	Biology	5	7	5	2	2	4.2	-3	8.5	4
Business Admin / FACS	Business, FACS	6	3	4	7	5	5.0	-1	6	10
Biology	Chemistry	7	4	3	1	1	3.2	-6	8.5	2
Education	Elementary	266	269	254	225	202	243.2	-64	13.5	404
English	English	60	47	49	49	27	46.4	-33	13.5	54
Biology	General Science	12	8	6	3	4	6.6	-8	8.5	8
HPERS	Health, Phys. Ed.	119	107	83	68	62	87.8	-57	8.5	124
CSME	Mathematics	35	37	36	16	14	27.6	-21	11	28
Music	Music	88	78	76	84	70	79.2	-18	8	140
Education	Social Studies	71	59	61	59	44	58.8	-27	13.5	88
English	Spanish	5	5	2	4	4	4.0	-1	13.5	8
Education	C & I	20	18	14	22	18	18.4	-2	13.5	36

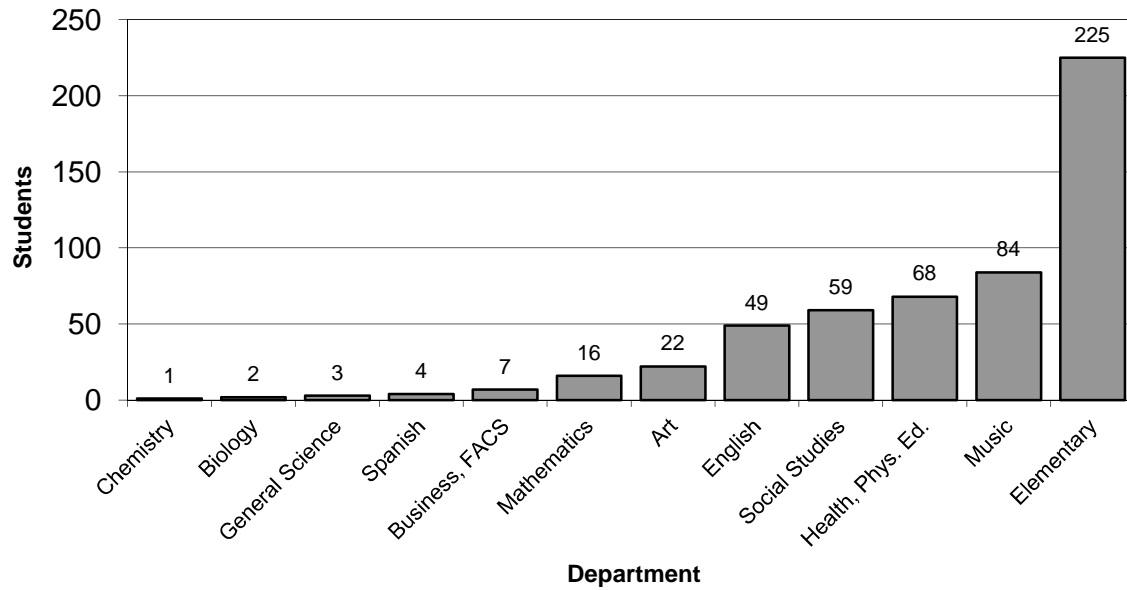
Note that the C & I students are included both in the Education department and in the departments of their concentrations. The secondary education majors are included only in the departments of their concentrations.

The Advising F16 "majors" is the number of students in the Fall 2016 column multiplied by 2, as Joe Simplicio specified starting with the 2003 reports. "Fac" is the number of full-time faculty in the department in which the concentration is housed.

General Explanation/Definitions.

1. A **concentration** is a teaching specialty such as English or Biology. The 18 C&I graduate students' concentrations have been added to their departments. Of the C&I students, one is in Art, two are in English, seven are Individualized and eight are in Special Education.
2. The **department** is the unit responsible for the concentration.
3. The numbers for each semester are the number of declared students in each concentration. Any given student may have more than one concentration.
4. The **mean** is the average of the annual number of students in a given concentration.
5. The **change** is the number of students in the current year minus the number of students in the first year.

Graph 6A. Students in Teacher Education Concentrations, Fall 2016
(from Table 6)



Graph 6B. Mean Numbers of Students in Teacher Education Concentrations, Fall 2012-Fall 2016
(from Table 6)

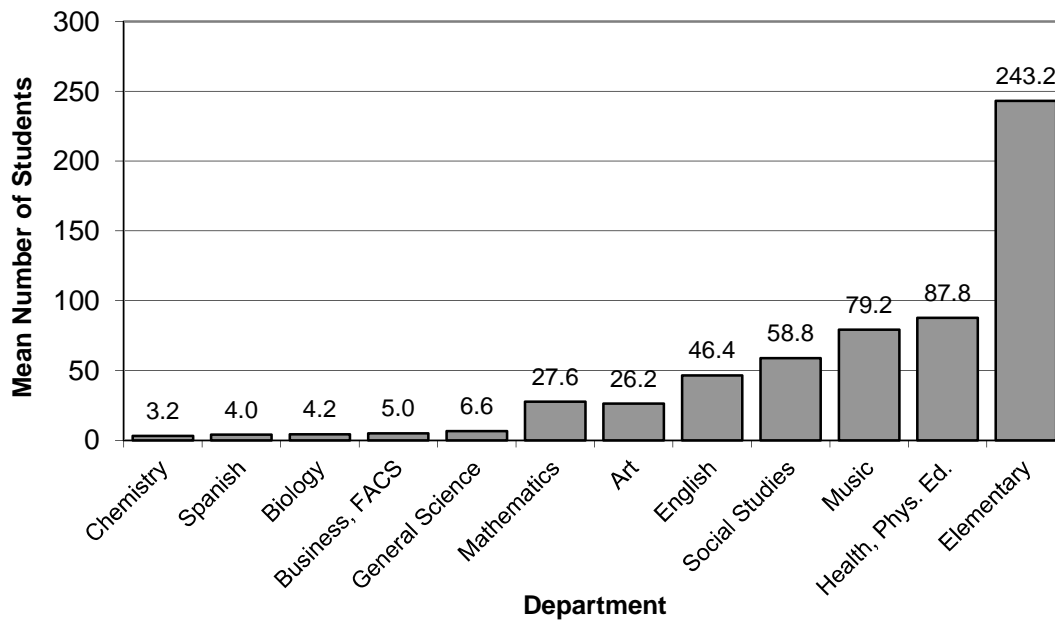


Table 7. Baccalaureate Majors per Department and Teacher Education Students by Department of Concentration Advisement

Department	Fall 2012			Fall 2013			Fall 2014			Fall 2015			Fall 2016			Fall 2012-16		
	N	Secondary Education and C&I	Total	N	Secondary Education and C&I	Total	N	Secondary Education and C&I	Total	N	Secondary Education and C&I	Total	N	Secondary Education and C&I	Total	Mean N	Mean Secondary Education	Mean Total
CAT	195	33	228	172	29	201	160	27	187	144	22	166	120	20	140	158.2	26.2	184.4
MCOM	111	0	111	124	0	124	125	0	125	104	0	104	104	0	104	113.6	0.0	113.6
ENGL	118	65	183	102	52	154	93	51	144	79	53	132	76	31	107	93.6	50.4	144.0
HIST	109	0	109	114	0	114	104	0	104	84	0	84	72	0	72	96.6	0.0	96.6
MUSC	56	88	144	48	78	126	39	76	115	38	84	122	30	70	100	42.2	79.2	121.4
<i>A&H</i>	<i>589</i>	<i>186</i>	<i>775</i>	<i>560</i>	<i>159</i>	<i>719</i>	<i>521</i>	<i>154</i>	<i>675</i>	<i>449</i>	<i>159</i>	<i>608</i>	<i>402</i>	<i>121</i>	<i>523</i>	<i>504.2</i>	<i>155.8</i>	<i>660.0</i>
ACCT	90	0	90	86	0	86	84	0	84	85	0	85	75	0	75	84.0	0.0	84.0
BADM	345	6	351	339	3	342	316	4	320	314	7	321	265	5	270	315.8	5.0	320.8
ECON / ECFN	34	0	34	42	0	42	32	0	32	32	0	32	29	0	29	33.8	0.0	33.8
PSCI	98	0	98	80	0	80	72	0	72	81	0	81	67	0	67	79.6	0.0	79.6
PSYC	184	0	184	166	0	166	162	0	162	132	0	132	123	0	123	153.4	0.0	153.4
SOGE	142	0	142	141	0	141	146	0	146	117	0	117	110	0	110	131.2	0.0	131.2
SOWK	107	0	107	105	0	105	82	0	82	86	0	86	97	0	97	95.4	0.0	95.4
GLBL (no dept affil.)													6	0	6	6.0	0.0	6.0
<i>BASS</i>	<i>1000</i>	<i>6</i>	<i>1006</i>	<i>959</i>	<i>3</i>	<i>962</i>	<i>894</i>	<i>4</i>	<i>898</i>	<i>847</i>	<i>7</i>	<i>854</i>	<i>772</i>	<i>5</i>	<i>777</i>	<i>894.4</i>	<i>5.0</i>	<i>899.4</i>
EDUC	613	74	687	564	69	633	539	64	603	512	61	573	433	44	477	532.2	62.4	594.6
HPER	307	119	426	304	107	411	314	83	397	314	68	382	320	62	382	311.8	87.8	399.6
NURS	486	0	486	490	0	490	454	0	454	433	0	433	438	0	438	460.2	0.0	460.2
<i>E&PS</i>	<i>1406</i>	<i>193</i>	<i>1599</i>	<i>1358</i>	<i>435</i>	<i>1793</i>	<i>1307</i>	<i>398</i>	<i>1705</i>	<i>1259</i>	<i>352</i>	<i>1611</i>	<i>1191</i>	<i>106</i>	<i>1297</i>	<i>1304.2</i>	<i>296.8</i>	<i>1601.0</i>
BIOL	210	24	234	222	19	241	204	14	218	203	6	209	190	7	197	205.8	14.0	219.8
CHEM	70	0	70	63	0	63	52	0	52	50	0	50	43	0	43	55.6	0.0	55.6
CIS	211	0	211	190	0	190	193	0	193	217	0	217	206	0	206	203.4	0.0	203.4
MATH	25	35	60	32	37	69	23	36	59	27	16	43	23	14	37	26.0	27.6	53.6
ENVS / ENPS	140	0	140	115	0	115	107	0	107	99	0	99	87	0	87	109.6	0.0	109.6
<i>NS&M</i>	<i>656</i>	<i>59</i>	<i>715</i>	<i>622</i>	<i>56</i>	<i>678</i>	<i>579</i>	<i>50</i>	<i>629</i>	<i>596</i>	<i>22</i>	<i>618</i>	<i>549</i>	<i>21</i>	<i>570</i>	<i>600.4</i>	<i>41.6</i>	<i>642.0</i>
Shepherd University	3651	444	4095	3499	653	4152	3301	606	3907	3151	540	3691	2914	253	3167	3303.2	499.2	3802.4

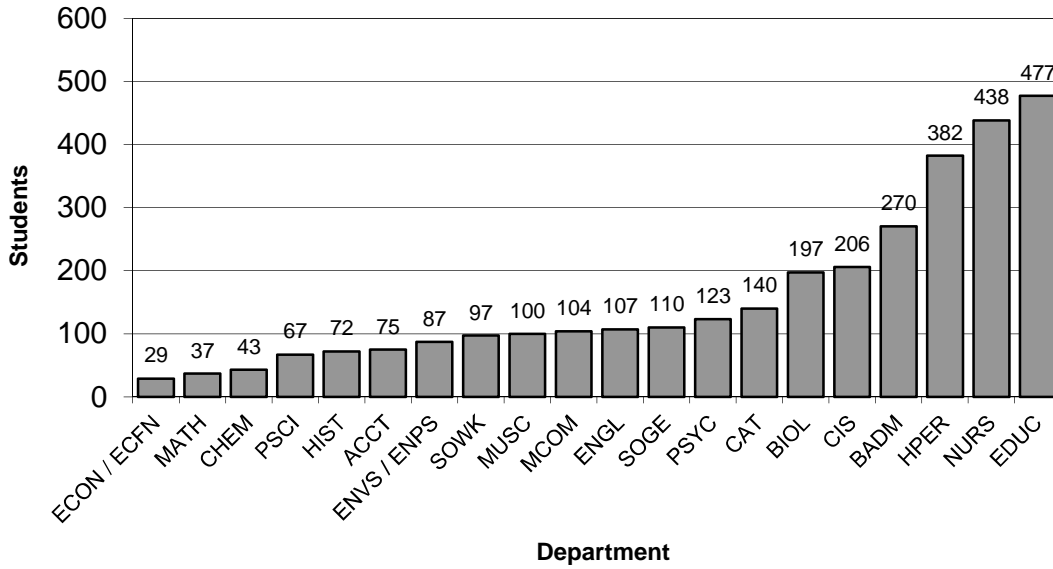
General Explanation/Definitions.

1. **N** is the number of undergraduate students in degree programs offered by the department. This includes first and second majors.
2. **Secondary Education and C&I** is the number of Secondary Education and C&I students with concentrations housed in that department. "Housing" is considered to be in the department if the Secondary Education coordinator for the concentration is in the department. For EDUC, numbers include Secondary Education Social Studies concentrations, and C&I Elementary Education and Social Studies concentrations; baccalaureate Elementary Education majors are not counted here.
3. **Total** is the sum of **N** and **Secondary Education**. Note that, for the EDUC department, this double-counts some students (as listed in the "Secondary Education and C&I" description above), and is therefore not likely to be useful.

Concentration housings are as follows:

- ART / CAT:** Art
- BIOL:** Biology, Chemistry, General Science
- BADM:** Business, FACS
- EDUC:** Social Studies, C&I
- ENGL:** English, Spanish
- HPERS:** Health and Physical Education
- MATH:** Mathematics
- MUSC:** Music

Graph 7a. Total Majors and Teacher Education Students, Fall 2016
(from Table 7)



Graph 7B. Mean Totals of Majors and Teacher Education Students, Fall 2012-Fall 2016
(from Table 7)

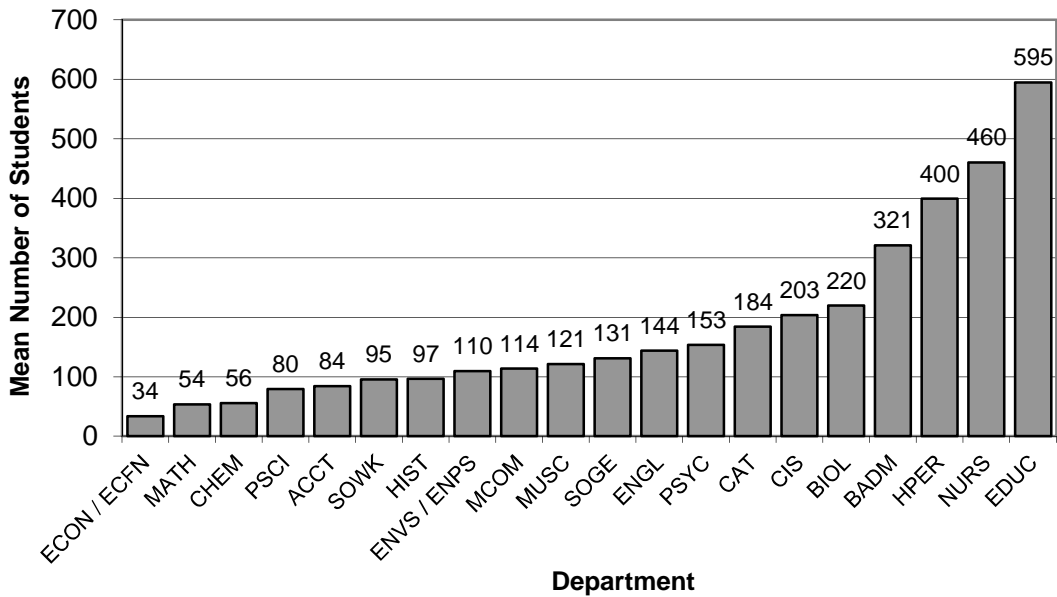


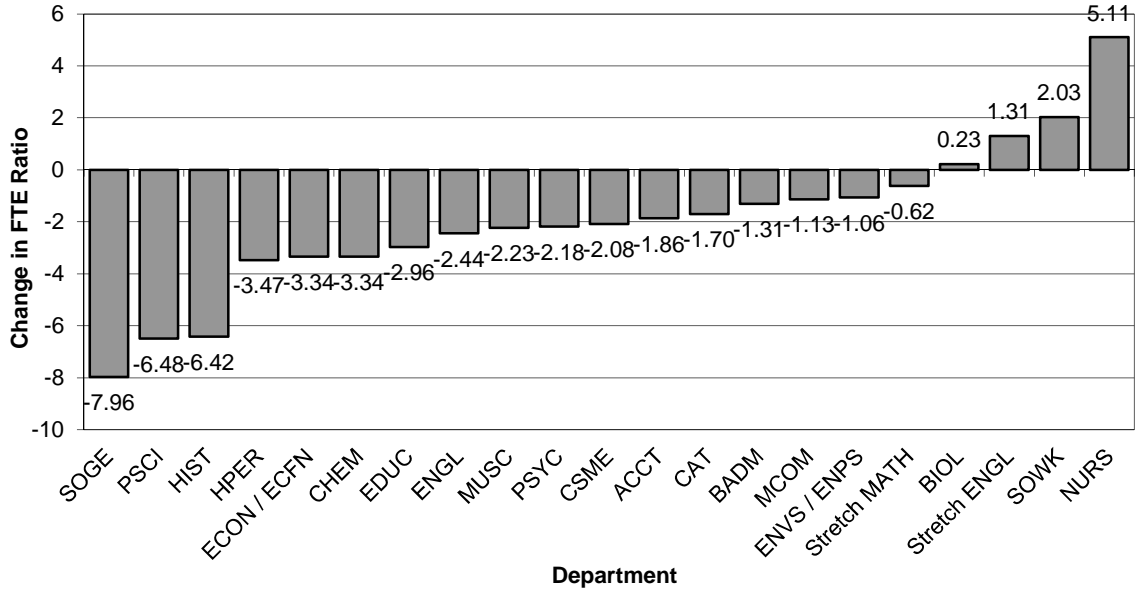
Table 8. FTE Student to FTE Faculty Ratios

Department	Fall 2012		Fall 2013		Fall 2014		Fall 2015		Fall 2016				Fall 2012-16	
	Ratio	Change	Ratio	Change	Ratio	Change	Ratio	Change	F-FTE	S-FTE	Ratio	Change	Mean Ratio	Change in Ratio
CAT	14.18	0.28	13.61	-0.28	13.12	-0.49	12.87	-0.25	12.47	155.60	12.48	-0.39	13.25	-1.70
MCOM	14.31	1.24	13.21	0.14	13.66	0.44	13.63	-0.03	7.00	92.27	13.18	-0.45	13.60	-1.13
ENGL	15.39	-1.37	14.13	-2.63	14.04	-0.08	13.61	-0.44	17.78	230.20	12.95	-0.66	14.02	-2.44
HIST	22.62	0.93	20.15	-1.54	18.89	-1.26	19.34	0.45	10.26	166.27	16.21	-3.13	19.44	-6.42
MUSC	10.09	-2.06	9.28	-2.87	7.97	-1.31	7.47	-0.50	13.22	103.93	7.86	0.39	8.54	-2.23
<i>A&H</i>	<i>15.08</i>	<i>-0.37</i>	<i>13.95</i>	<i>-1.50</i>	<i>13.24</i>	<i>-0.71</i>	<i>12.95</i>	<i>-0.29</i>	<i>60.73</i>	<i>748.27</i>	<i>12.32</i>	<i>-0.63</i>	<i>13.51</i>	<i>-2.76</i>
ACCT	17.72	1.11	18.52	1.91	16.86	-1.67	17.35	0.50	3.00	47.60	15.87	-1.49	17.26	-1.86
BADM	18.13	1.51	16.15	-0.47	15.77	-0.38	17.44	1.67	11.46	192.73	16.82	-0.62	16.86	-1.31
ECON / ECFN	19.01	-2.43	17.92	-3.51	15.60	-2.32	16.97	1.37	6.00	94.00	15.67	-1.30	17.03	-3.34
PSCI	19.16	-0.17	13.90	-5.43	15.50	1.60	16.51	1.00	5.00	63.40	12.68	-3.83	15.55	-6.48
PSYC	17.72	-2.42	17.02	-3.12	15.76	-1.26	15.24	-0.52	9.25	143.73	15.54	0.30	16.25	-2.18
SOGE	22.43	0.23	19.26	-2.95	19.54	0.28	17.56	-1.98	10.74	155.40	14.47	-3.09	18.65	-7.96
SOWK	14.32	1.17	14.31	1.15	12.94	-1.36	12.30	-0.64	2.67	43.67	16.36	4.05	14.05	2.03
<i>B&SS</i>	<i>18.84</i>	<i>-0.03</i>	<i>16.86</i>	<i>-2.01</i>	<i>16.32</i>	<i>-0.54</i>	<i>16.48</i>	<i>0.16</i>	<i>48.12</i>	<i>740.53</i>	<i>15.39</i>	<i>-1.09</i>	<i>16.78</i>	<i>-3.45</i>
EDUC	11.93	-0.26	11.68	-0.52	11.35	-0.33	9.79	-1.56	12.36	110.87	8.97	-0.82	10.74	-2.96
HPER	16.46	-0.86	14.43	-2.89	15.06	0.63	15.30	0.24	24.58	319.20	12.99	-2.31	14.85	-3.47
NURS	19.14	0.48	22.77	4.11	25.11	2.34	24.38	-0.74	6.92	167.80	24.25	-0.13	23.13	5.11
<i>E&PS</i>	<i>15.77</i>	<i>-0.22</i>	<i>15.17</i>	<i>-0.82</i>	<i>15.69</i>	<i>0.53</i>	<i>15.23</i>	<i>-0.46</i>	<i>43.86</i>	<i>597.87</i>	<i>13.63</i>	<i>-1.60</i>	<i>15.10</i>	<i>-2.14</i>
BIOL	17.19	0.84	19.03	2.67	17.58	-1.45	18.63	1.05	10.33	179.93	17.42	-1.21	17.97	0.23
CHEM	20.39	-0.05	19.38	-1.06	19.37	-0.01	19.25	-0.12	6.42	109.47	17.05	-2.20	19.09	-3.34
CSME	17.07	1.30	16.19	0.42	15.87	-0.32	15.52	-0.35	15.32	229.60	14.99	-0.53	15.93	-2.08
ENVS / ENPS	16.42	1.05	17.02	1.65	16.49	-0.54	16.95	0.46	7.58	116.47	15.37	-1.58	16.45	-1.06
<i>NS&M</i>	<i>17.53</i>	<i>0.91</i>	<i>17.60</i>	<i>0.98</i>	<i>16.96</i>	<i>-0.64</i>	<i>17.19</i>	<i>0.23</i>	<i>39.65</i>	<i>635.47</i>	<i>16.03</i>	<i>-1.16</i>	<i>17.06</i>	<i>-1.50</i>
Stretch English	9.92	-0.50	11.30	1.38	9.18	-2.12	10.46	1.28	1.33	14.93	11.23	0.76	10.42	1.31
Stretch Math	17.38	-2.35	20.12	2.74	17.90	-2.21	17.34	-0.57	2.49	41.73	16.76	-0.58	17.90	-0.62
<i>Stretch</i>	<i>13.99</i>	<i>-1.40</i>	<i>16.29</i>	<i>2.30</i>	<i>14.48</i>	<i>-1.81</i>	<i>14.79</i>	<i>0.31</i>	<i>3.82</i>	<i>56.66</i>	<i>14.83</i>	<i>0.05</i>	<i>14.88</i>	<i>0.85</i>
Shepherd University	16.53	0.01	15.68	-1.04	15.27	-0.41	15.17	-0.10	196.18	2778.80	14.16	-1.01	15.37	-2.37

General Explanation/Definitions.

1. The **ratio** is obtained by dividing the student FTE by the faculty FTE.
2. One faculty **FTE** (full-time equivalent) equals 12 hours of instructional responsibility and one student FTE equals 15 credit hours.
3. The annual **change** is the current year's ratio minus the prior year's ratio.
4. The **mean ratio** is the sum of the annual ratios divided by the number of years for which data are presented (five years).
5. The **change in ratio** is the current year's ratio minus the first year's ratio.
6. Numbers include undergraduate instruction only.

**Graph 8A: Change in Ratios
(FTE Students: FTE Faculty), 2012-2016
(from Table 8)**



**Graph 8B: Mean Ratios
(FTE Students: FTE Faculty), 2012-2016
(from Table 8)**

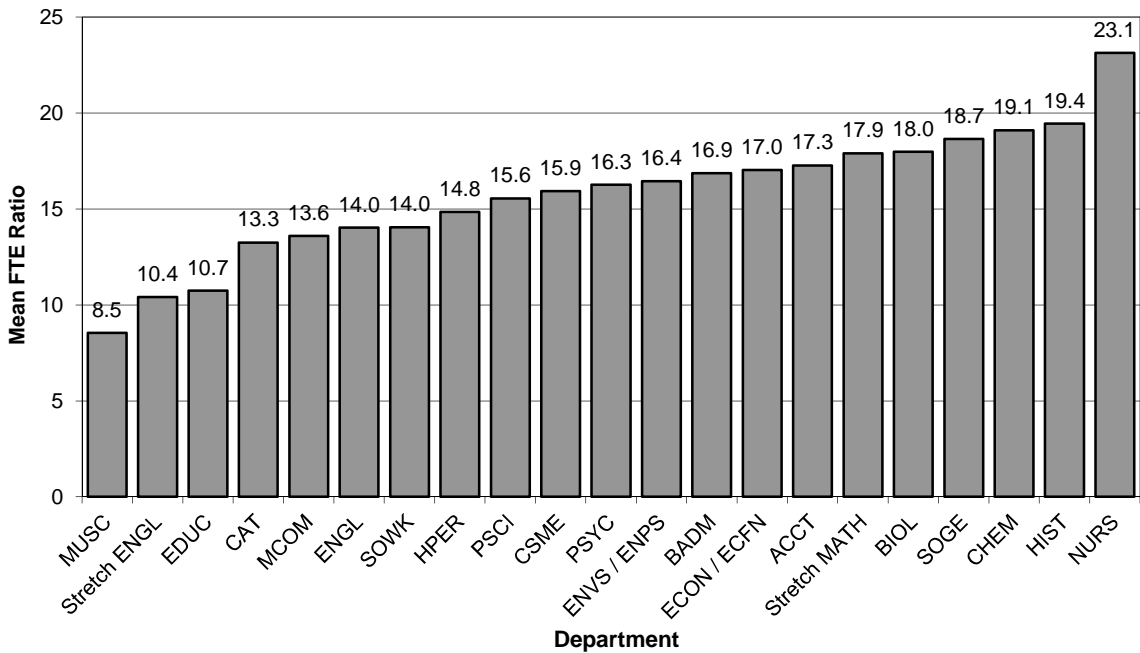


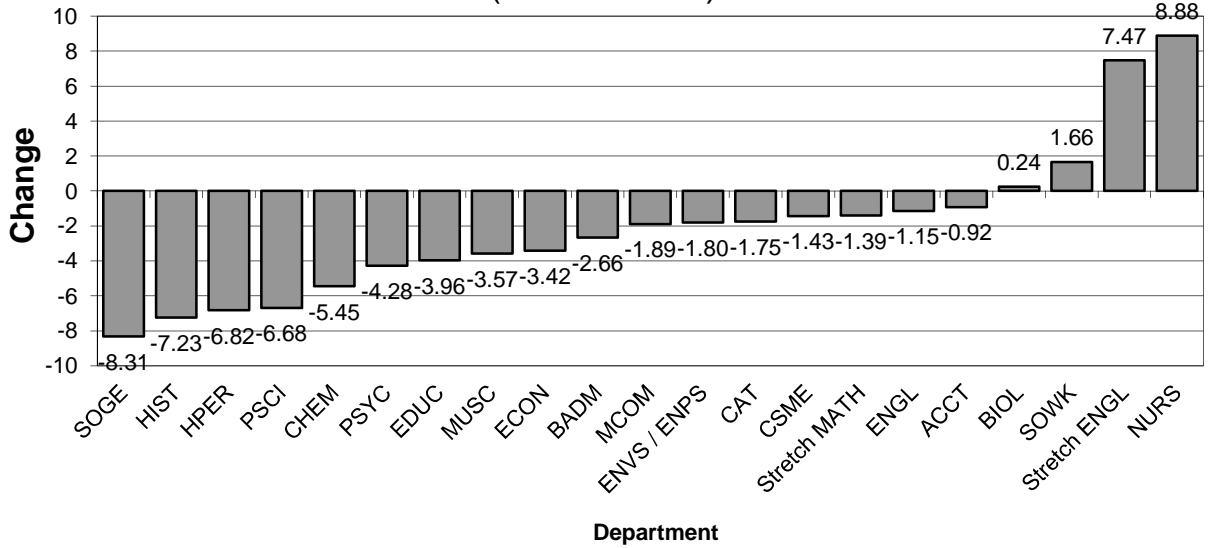
Table 9. Ratios of Student FTE Generated by Full-Time Faculty Only to Full-Time Faculty FTE

Department	Fall 2012			Fall 2013			Fall 2014			Fall 2015			Fall 2016				Fall 2012-16		
	Ratio	% Chg	A. Chg.	Ratio	% Chg	A. Chg.	Ratio	% Chg	A. Chg.	Ratio	% Chg	A. Chg.	F-FTE	S-FTE	Ratio	% Chg	A. Chg.	Mean Ratio	Change in Ratio
CAT	12.40	-2.2%	-0.28	11.99	-3.4%	-0.42	11.10	-7.4%	-0.89	11.93	-0.5%	-0.06	8.24	87.80	10.66	-10.7%	-1.27	11.61	-1.75
MCOM	13.25	2.4%	0.32	13.20	-0.4%	-0.05	14.29	8.3%	1.09	12.71	-3.7%	-0.49	4.25	48.27	11.36	-10.6%	-1.35	12.96	-1.89
ENGL	14.25	-14.0%	-2.31	13.60	-4.6%	-0.65	13.64	0.2%	0.03	13.75	1.1%	0.14	11.03	144.60	13.11	-4.6%	-0.64	13.67	-1.15
HIST	21.91	4.1%	0.85	19.92	-9.1%	-1.99	19.10	-4.1%	-0.82	16.67	-16.3%	-3.25	7.01	102.87	14.67	-12.0%	-1.99	18.45	-7.23
MUSC	13.84	7.5%	0.97	12.06	-12.9%	-1.78	11.23	-6.9%	-0.83	9.59	-20.5%	-2.48	5.06	51.97	10.27	7.1%	0.68	11.40	-3.57
<i>A&H</i>	15.29	-0.1%	-0.02	14.07	-8.0%	-1.22	13.31	-5.4%	-0.76	13.01	-7.5%	-1.06	35.59	435.51	12.24	-5.9%	-0.77	13.59	-3.06
ACCT	17.72	6.7%	1.11	18.40	3.8%	0.68	16.33	-11.2%	-2.07	18.47	0.4%	0.07	2.75	46.20	16.80	-9.1%	-1.67	17.55	-0.92
BADM	17.63	7.4%	1.22	16.59	-5.9%	-1.04	14.76	-11.0%	-1.83	16.47	-0.7%	-0.12	4.87	72.87	14.96	-9.2%	-1.51	16.08	-2.66
ECON / ECFN	18.98	-1.2%	-0.22	16.98	-10.5%	-2.00	14.28	-15.9%	-2.70	16.14	-4.9%	-0.84	4.50	70.00	15.56	-3.6%	-0.59	16.39	-3.42
PSCI	19.20	5.1%	0.93	12.23	-36.3%	-6.97	16.04	31.1%	3.81	16.51	34.9%	4.27	4.25	53.20	12.52	-24.2%	-3.99	15.30	-6.68
PSYC	17.41	-10.1%	-1.97	16.77	-3.7%	-0.65	14.82	-11.6%	-1.94	12.78	-23.8%	-3.99	5.75	75.53	13.14	2.8%	0.36	14.98	-4.28
SOGE	21.57	-7.2%	-1.68	20.28	-6.0%	-1.29	18.82	-7.2%	-1.46	17.47	-13.9%	-2.81	5.99	79.40	13.26	-24.1%	-4.21	18.28	-8.31
SOWK	14.32	7.4%	0.99	13.98	-2.4%	-0.34	13.21	-5.5%	-0.78	11.91	-14.8%	-2.07	2.42	38.67	15.98	34.2%	4.07	13.88	1.66
<i>B&SS</i>	18.24	-0.1%	-0.01	16.51	-9.5%	-1.73	15.59	-5.6%	-0.93	15.72	-4.8%	-0.80	30.53	435.87	14.28	-9.2%	-1.44	16.07	-3.96
EDUC	13.29	6.6%	0.83	12.02	-9.6%	-1.27	11.66	-3.0%	-0.36	10.22	-15.0%	-1.80	10.03	93.60	9.33	-8.7%	-0.89	11.31	-3.96
HPER	17.88	5.2%	0.89	13.95	-21.9%	-3.92	15.32	9.8%	1.37	15.03	7.7%	1.08	12.42	137.27	11.05	-26.5%	-3.98	14.65	-6.82
NURS	19.80	3.1%	0.59	24.23	22.3%	4.42	24.25	0.1%	0.03	27.05	11.6%	2.82	5.33	152.87	28.68	6.0%	1.64	24.80	8.88
<i>E&PS</i>	16.71	5.8%	0.92	15.79	-5.5%	-0.91	16.18	2.5%	0.39	16.20	2.6%	0.41	27.78	383.74	13.81	-14.7%	-2.39	15.74	-2.89
BIOL	15.80	1.3%	0.20	19.07	20.7%	3.27	15.65	-18.0%	-3.43	17.22	-9.7%	-1.85	7.00	112.27	16.04	-6.9%	-1.18	16.75	0.24
CHEM	22.72	4.8%	1.03	19.71	-13.3%	-3.01	19.75	0.2%	0.05	20.20	2.5%	0.50	4.59	79.27	17.27	-14.5%	-2.93	19.93	-5.45
CSME	14.24	-1.0%	-0.14	14.43	1.3%	0.19	14.07	-2.5%	-0.36	13.80	-4.4%	-0.63	11.00	140.87	12.81	-7.2%	-0.99	13.87	-1.43
ENVS / ENPS	17.12	10.4%	1.61	17.86	4.3%	0.74	16.17	-9.5%	-1.69	17.24	-3.5%	-0.62	5.75	88.07	15.32	-11.2%	-1.92	16.74	-1.80
<i>NS&M</i>	16.67	4.1%	0.66	17.31	3.9%	0.64	15.80	-8.7%	-1.51	16.38	-5.4%	-0.94	28.34	420.48	14.84	-9.4%	-1.54	16.20	-1.83
Stretch English	3.94	N/A	N/A	10.00	153.7%	6.06	9.33	-6.7%	-0.67	10.27	2.7%	0.27	0.83	9.47	11.41	11.1%	1.14	8.99	7.47
Stretch Math	17.78	-9.1%	-1.78	20.24	13.9%	2.46	17.96	-11.2%	-2.28	16.23	-19.8%	-4.01	0.83	13.60	16.39	1.0%	0.16	17.72	-1.39
<i>Stretch</i>	16.02	-18.1%	-3.53	14.64	-8.6%	-1.38	14.73	0.6%	0.09	12.97	-11.4%	-1.67	1.66	23.07	13.90	7.1%	0.92	14.45	-2.12
Shepherd University	16.70	2.0%	0.33	15.84	-5.1%	-0.85	15.12	-4.5%	-0.72	15.17	-4.2%	-0.67	123.90	1698.67	13.71	-9.7%	-1.46	15.31	-2.99

General Explanation/Definitions.

1. The **ratio** is obtained by dividing the student FTE generated by full-time faculty by the full-time faculty FTE. For full-time faculty, one faculty FTE (full-time equivalent) equals 12 hours of instructional responsibility and one student FTE equals 15 credit hours.
2. The **% change** is the difference between the ratio in two consecutive years divided by the ratio of the earlier year.
3. The **annual change** is the current year's ratio minus the prior year's ratio.
4. The **mean ratio** is the sum of the annual ratios divided by the number of years for which data are presented (five years).
5. The **change in ratio** is the current year's ratio minus the first year's ratio.
6. Numbers include undergraduate instruction only.

**Graph 9A: Change in FTE Ratios
(Student FTE: Faculty FTE for Full-Time Faculty),
2012-2016
(from Table 9)**



**Graph 9B: Mean FTE Ratios
(Student FTE: Faculty FTE for Full-Time Faculty),
2012-2016
(from Table 9)**

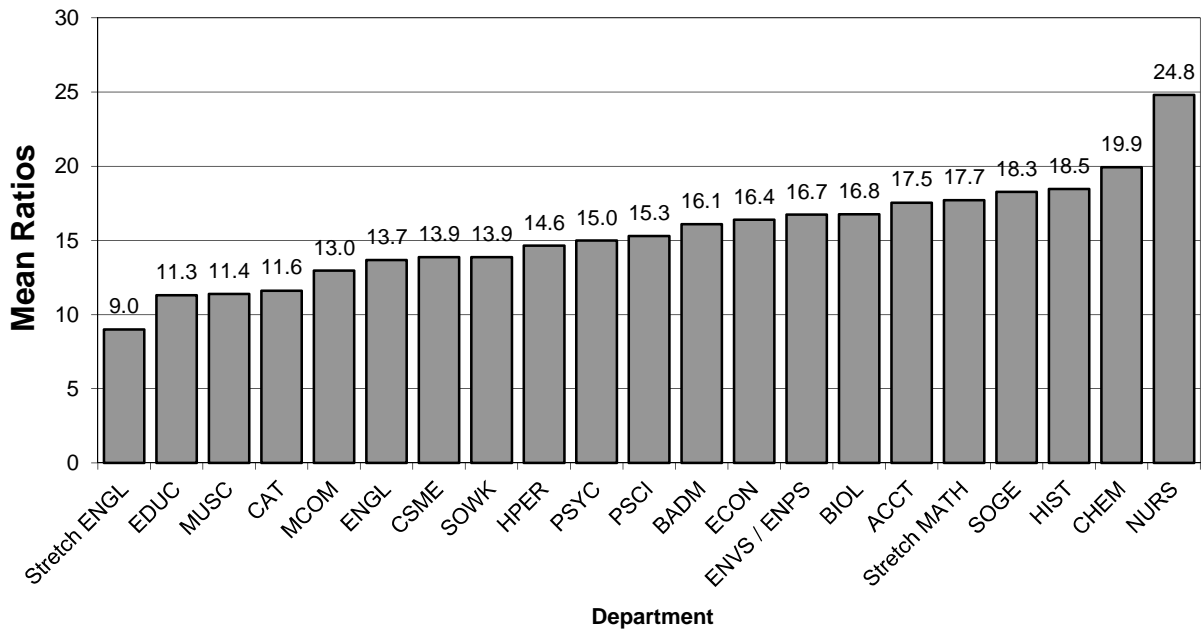


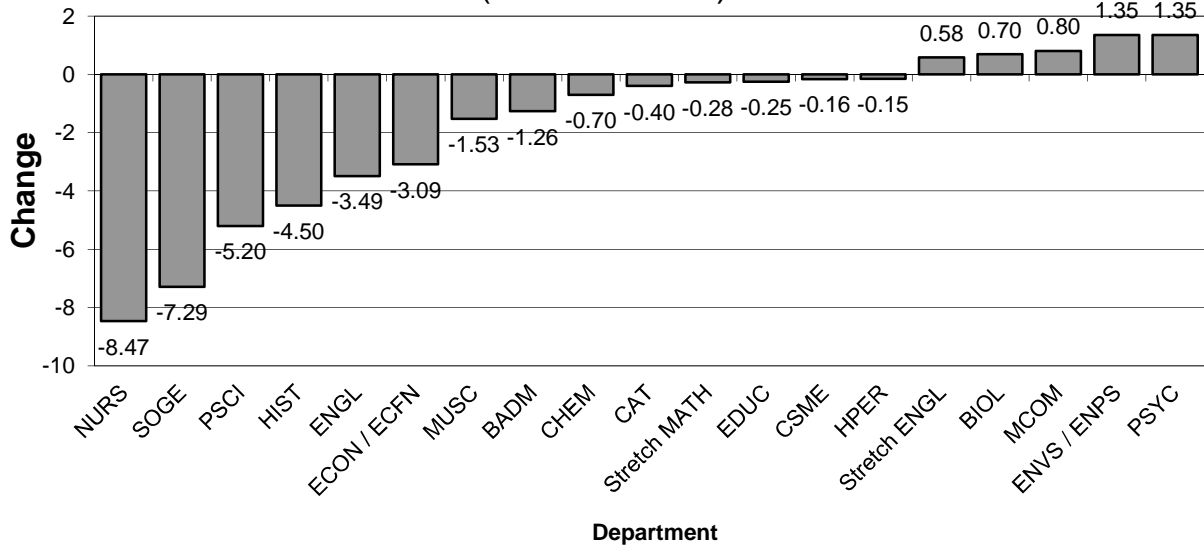
Table 10. Ratios of Student FTE Generated by Part-Time Faculty Only to Part-Time Faculty FTE

Department	Fall 2012			Fall 2013			Fall 2014			Fall 2015			Fall 2016				Fall 2012-16		
	Ratio	% Chg	A. Chg.	Ratio	% Chg	A. Chg.	Ratio	% Chg	A. Chg.	Ratio	% Chg	A. Chg.	F-FTE	S-FTE	Ratio	% Chg	A. Chg.	Mean Ratio	Change in Ratio
CAT	16.42	8.8%	1.33	15.90	-3.2%	-0.52	15.93	0.2%	0.03	13.85	-12.9%	-2.05	4.23	67.80	16.03	15.8%	2.18	15.63	-0.40
MCOM	15.20	15.3%	2.02	13.23	-13.0%	-1.97	12.97	-2.0%	-0.26	14.83	12.1%	1.60	2.75	44.00	16.00	7.9%	1.17	14.45	0.80
ENGL	16.17	-4.5%	-0.75	14.66	-9.3%	-1.51	14.53	-0.9%	-0.13	13.39	-8.7%	-1.27	6.75	85.60	12.68	-5.3%	-0.71	14.29	-3.49
HIST	24.01	6.8%	1.53	20.49	-14.7%	-3.52	18.75	-8.5%	-1.74	22.49	9.8%	2.01	3.25	63.40	19.51	-13.3%	-2.99	21.05	-4.50
MUSC	7.89	-32.0%	-3.72	7.31	-7.3%	-0.58	5.22	-28.5%	-2.08	6.02	-17.7%	-1.29	8.17	51.97	6.36	5.7%	0.34	6.56	-1.53
<i>A&H</i>	14.88	-4.4%	-0.69	13.82	-7.1%	-1.06	13.18	-4.7%	-0.64	12.89	-6.7%	-0.93	25.15	312.77	12.44	-3.5%	-0.45	13.44	-2.45
ACCT	N/A	N/A	N/A	19.20	N/A	N/A	20.00	4.2%	0.80	11.20	-41.7%	-8.00	0.25	1.40	5.60	-50.0%	-5.60	14.00	5.60
BADM	19.48	14.1%	2.41	15.00	-23.0%	-4.48	17.23	14.8%	2.23	19.44	29.6%	4.44	6.58	119.87	18.22	-6.3%	-1.22	17.87	-1.26
ECON / ECFN	19.09	-24.4%	-6.17	20.34	6.6%	1.26	20.00	-1.7%	-0.34	19.33	-5.0%	-1.01	1.50	24.00	16.00	-17.2%	-3.33	18.95	-3.09
PSCI	18.80	-28.8%	-7.60	21.92	16.6%	3.12	10.40	-52.6%	-11.52	N/A	N/A	N/A	0.75	10.20	13.60	N/A	N/A	16.18	-5.20
PSYC	18.13	-15.7%	-3.38	17.43	-3.9%	-0.70	17.41	-0.1%	-0.01	19.71	13.1%	2.29	3.50	68.20	19.49	-1.2%	-0.23	18.44	1.35
SOGE	23.29	13.2%	2.72	17.37	-25.4%	-5.92	20.92	20.4%	3.55	17.73	2.1%	0.36	4.75	76.00	16.00	-9.8%	-1.73	19.06	-7.29
SOWK	N/A	N/A	N/A	18.40	N/A	N/A	9.60	-47.8%	-8.80	14.40	-21.7%	-4.00	0.25	5.00	20.00	38.9%	5.60	15.60	20.00
<i>B&SS</i>	20.31	-0.7%	-0.15	17.76	-12.5%	-2.55	18.13	2.1%	0.37	18.55	4.4%	0.79	17.58	304.67	17.33	-6.6%	-1.22	18.42	-2.98
EDUC	7.66	-30.5%	-3.36	7.47	-2.5%	-0.19	10.57	41.5%	3.10	8.14	9.0%	0.67	2.33	17.27	7.41	-8.9%	-0.73	8.25	-0.25
HPER	15.10	-15.0%	-2.66	14.80	-2.0%	-0.30	14.87	0.5%	0.08	15.45	4.4%	0.65	12.17	181.93	14.95	-3.2%	-0.50	15.03	-0.15
NURS	17.92	7.1%	1.19	4.36	-75.7%	-13.56	29.38	573.8%	25.02	7.47	71.3%	3.11	1.58	14.93	9.45	26.5%	1.98	13.71	-8.47
<i>E&PS</i>	14.38	-12.2%	-2.01	14.07	-2.2%	-0.31	15.03	6.8%	0.96	13.93	-1.0%	-0.14	16.08	214.13	13.32	-4.4%	-0.61	14.14	-1.06
BIOL	19.62	6.3%	1.17	18.88	-3.8%	-0.75	24.18	28.1%	5.30	21.94	16.2%	3.07	3.33	67.67	20.32	-7.4%	-1.62	20.99	0.70
CHEM	17.20	-7.2%	-1.33	17.47	1.6%	0.27	18.44	5.5%	0.97	16.98	-2.8%	-0.49	1.83	30.20	16.50	-2.8%	-0.48	17.32	-0.70
CSME	20.70	13.7%	2.50	19.32	-6.6%	-1.38	19.37	0.3%	0.05	18.90	-2.2%	-0.42	4.32	88.73	20.54	8.7%	1.64	19.77	-0.16
ENVS / ENPS	14.17	-5.2%	-0.78	15.06	6.3%	0.89	17.84	18.5%	2.78	16.00	6.3%	0.94	1.83	28.40	15.52	-3.0%	-0.48	15.72	1.35
<i>NS&M</i>	18.96	5.8%	1.04	18.31	-3.4%	-0.65	19.98	9.1%	1.66	19.09	4.2%	0.77	11.31	215.00	19.01	-0.4%	-0.08	19.07	0.04
Stretch English	10.36	-0.6%	-0.06	12.42	19.9%	2.06	9.00	-27.5%	-3.42	10.75	-13.5%	-1.67	0.50	5.47	10.94	1.8%	0.19	10.69	0.58
Stretch Math	17.12	-14.1%	-2.82	20.07	17.2%	2.94	17.67	-12.0%	-2.40	17.80	-11.3%	-2.27	1.67	28.13	16.84	-5.4%	-0.96	17.90	-0.28
<i>Stretch</i>	13.33	-2.0%	-0.27	17.24	29.3%	3.91	14.07	-18.4%	-3.17	16.03	-7.0%	-1.21	2.17	33.60	15.48	-3.4%	-0.55	15.23	2.15
Shepherd University	16.31	-2.8%	-0.47	15.41	-5.5%	-0.89	15.51	0.7%	0.10	15.16	-1.6%	-0.25	72.29	1080.17	14.94	-1.5%	-0.22	15.47	-1.36

General Explanation/Definitions.

1. The **ratio** is obtained by dividing the student FTE generated by part-time faculty by the part-time faculty FTE. For part-time faculty, one faculty FTE (full-time equivalent) equals 15 hours of instructional responsibility and one student FTE equals 15 credit hours.
2. The **% change** is the difference between the ratio in two consecutive years divided by the ratio of the earlier year.
3. The **annual change** is the current year's ratio minus the prior year's ratio.
4. The **mean ratio** is the sum of the annual ratios divided by the number of years for which data are presented (five years).
5. The **change in ratio** is the current year's ratio minus the first year's ratio.
6. Numbers include undergraduate instruction only.

**Graph 10A: Change in FTE Ratios
(Student FTE: Faculty FTE for Part-Time Faculty),
2012-2016
(from Table 10)**



**Graph 10B: Mean FTE Ratios
(Student FTE: Faculty FTE for Part-Time Faculty),
2012-2016
(from Table 10)**

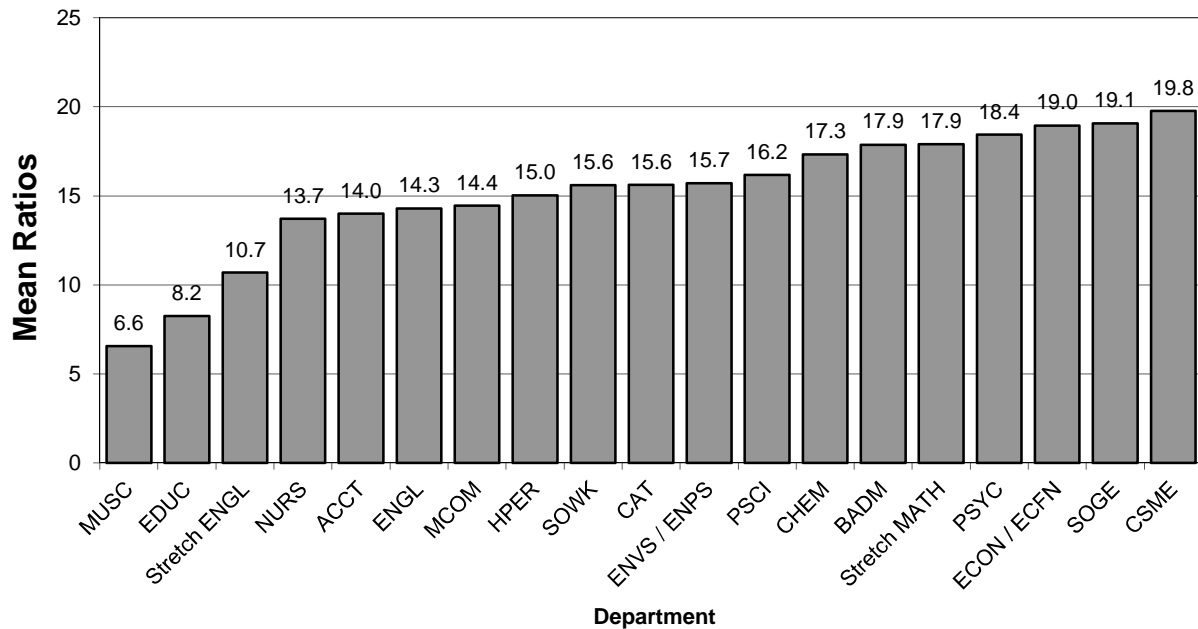


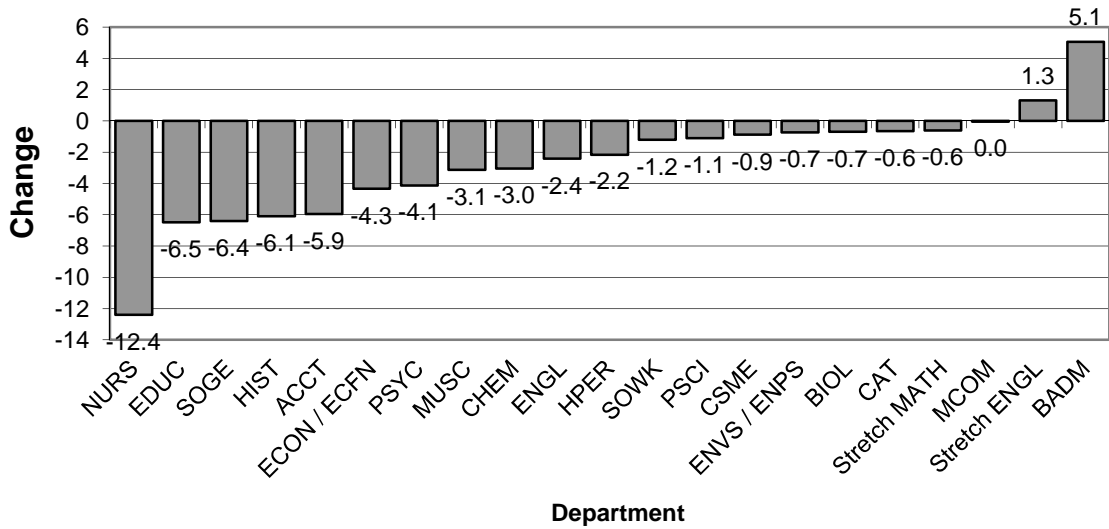
Table 11. Student-to-Faculty FTE Ratios in Lower Level Courses

Department	Fall 2012			Fall 2013			Fall 2014			Fall 2015			Fall 2016			Fall 2012-16			
	Ratio	% Chg.	A. Chg.	Ratio	% Chg.	A. Chg.	Ratio	% Chg.	A. Chg.	Ratio	% Chg.	A. Chg.	Faculty FTE	Student FTE	Ratio	% Chg.	A. Chg.	Mean Ratio	Change in Ratio
CAT	15.75	-0.03	-0.50	15.01	-0.05	-0.74	15.37	0.02	0.35	13.92	-0.07	-1.09	6.50	98.20	15.11	0.09	1.19	15.03	-0.64
MCOM	15.64	0.23	2.91	13.29	-0.15	-2.35	14.11	0.06	0.82	15.80	0.19	2.51	2.50	39.00	15.60	-0.01	-0.20	14.89	-0.04
ENGL	16.10	-0.10	-1.80	15.20	-0.06	-0.90	15.11	-0.01	-0.09	14.37	-0.05	-0.83	13.50	184.80	13.69	-0.05	-0.68	14.90	-2.41
HIST	24.95	0.03	0.75	22.67	-0.09	-2.27	18.99	-0.16	-3.69	21.44	-0.05	-1.23	6.58	124.07	18.86	-0.12	-2.59	21.38	-6.09
MUSC	11.81	-0.28	-4.67	10.67	-0.10	-1.14	10.00	-0.06	-0.67	9.73	-0.09	-0.94	6.45	55.97	8.68	-0.11	-1.05	10.18	-3.13
<i>A&H</i>	16.88	-0.05	-0.88	15.64	-0.07	-1.25	14.88	-0.05	-0.76	14.80	-0.05	-0.84	35.53	502.04	14.13	-0.05	-0.67	15.27	-2.75
ACCT	19.07	-0.05	-1.07	17.20	-0.10	-1.87	17.47	0.02	0.27	15.60	-0.09	-1.60	1.25	16.40	13.12	-0.16	-2.48	16.49	-5.95
BADM	16.04	-0.14	-2.53	14.84	-0.07	-1.20	23.27	0.57	8.43	23.68	0.60	8.84	1.58	33.33	21.09	-0.11	-2.58	19.78	5.06
ECON / ECFN	21.04	-0.10	-2.39	18.90	-0.10	-2.14	18.50	-0.02	-0.40	18.24	-0.04	-0.66	4.00	66.80	16.70	-0.08	-1.54	18.67	-4.34
PSCI	18.50	-0.24	-5.77	18.13	-0.02	-0.37	15.51	-0.14	-2.63	18.33	0.01	0.19	2.00	34.80	17.40	-0.05	-0.93	17.57	-1.10
PSYC	18.95	-0.13	-2.96	17.87	-0.06	-1.08	16.18	-0.09	-1.69	14.86	-0.17	-3.01	4.92	72.93	14.82	0.00	-0.04	16.54	-4.13
SOGE	25.64	-0.08	-2.15	23.24	-0.09	-2.40	22.40	-0.04	-0.84	20.21	-0.13	-3.03	4.49	86.40	19.24	-0.05	-0.97	22.15	-6.40
SOWK	19.18	0.01	0.18	16.97	-0.12	-2.21	9.91	-0.42	-7.06	16.36	-0.04	-0.61	0.33	5.93	17.97	0.10	1.61	16.08	-1.21
<i>BASS</i>	20.66	-0.13	-3.00	19.00	-0.08	-1.65	18.69	-0.02	-0.32	18.08	-0.05	-0.92	18.57	316.59	17.05	-0.06	-1.03	18.70	-3.61
EDUC	17.55	0.20	2.93	16.62	-0.05	-0.93	15.73	-0.05	-0.89	13.15	-0.21	-3.47	1.50	16.60	11.07	-0.16	-2.09	14.83	-6.49
HPER	17.69	-0.15	-3.14	16.82	-0.05	-0.87	18.18	0.08	1.35	18.41	0.09	1.58	12.33	191.53	15.53	-0.16	-2.88	17.33	-2.16
NURS	12.40	0.27	2.66	8.25	-0.33	-4.15	13.02	0.58	4.77	N/A	-0.58	4.15	0.00	0.00	N/A	N/A	N/A	11.23	-12.40
<i>E&PS</i>	17.51	-0.10	-2.05	16.43	-0.06	-1.08	17.75	0.08	1.32	17.84	0.09	1.40	13.83	208.13	15.05	-0.16	-2.79	16.92	-2.46
BIOL	18.73	0.11	1.89	19.77	0.06	1.04	18.92	-0.04	-0.85	19.68	0.00	-0.09	7.33	132.20	18.04	-0.08	-1.64	19.03	-0.70
CHEM	20.78	-0.01	-0.20	20.44	-0.02	-0.33	19.66	-0.04	-0.78	21.02	0.03	0.58	4.17	73.93	17.73	-0.16	-3.29	19.93	-3.05
CSME	18.09	2.9%	0.50	18.27	1.0%	0.18	17.79	-2.6%	-0.48	17.81	-2.5%	-0.46	8.90	153.13	17.21	-3.4%	-0.61	17.83	-0.89
ENVS / ENPS	16.57	-0.02	-0.33	16.44	-0.01	-0.13	15.57	-0.05	-0.87	16.62	0.01	0.18	4.75	75.20	15.83	-0.05	-0.79	16.21	-0.74
<i>NS&M</i>	18.45	0.03	0.60	18.81	0.02	0.36	18.00	-0.04	-0.81	18.70	-0.01	-0.11	25.15	434.46	17.27	-0.08	-1.43	18.25	-1.18
Stretch English	9.92	-4.8%	-0.50	11.30	14.0%	1.38	9.18	-18.8%	-2.12	10.46	-7.5%	-0.84	1.33	14.93	11.23	7.3%	0.76	10.42	1.31
Stretch Math	17.38	-11.9%	-2.35	20.12	15.8%	2.74	17.90	-11.0%	-2.21	17.34	-13.8%	-2.78	2.49	41.73	16.76	-3.3%	-0.58	17.90	-0.62
<i>Stretch</i>	13.99	-9.1%	-1.40	16.29	16.5%	2.30	14.48	-11.1%	-1.81	14.79	-9.2%	-1.51	3.82	56.66	14.83	0.3%	0.05	14.88	0.85
Shepherd University	17.89	-4.8%	-0.90	17.20	-3.8%	-0.69	16.78	-2.5%	-0.42	16.82	-2.2%	-0.38	96.90	1517.88	15.66	-6.9%	-1.16	16.87	-2.22

General Explanation/Definitions.

1. The **ratio** is obtained by dividing the student FTE by the faculty FTE .
2. **Lower level** includes 100 and 200 level courses.
3. The **% change** is the difference between the ratio in two consecutive years divided by the ratio of the earlier year.
4. The **annual change** (A. Chg.) is the current year's ratio minus the prior year's ratio.
5. The **mean ratio** is the sum of the annual ratios divided by the number of years for which data are presented (five years).
6. The **change in ratio** is the current year's ratio minus the earliest year's ratio.
7. Numbers include undergraduate instruction only.

Graph 11A: Change in Student FTE to Faculty FTE Ratios in Lower Level Courses, 2012 - 2016
(from Table 11)



Graph 11B: Mean Student FTE to Faculty FTE Ratios in Lower Level Courses, 2012 - 2016
(from Table 11)

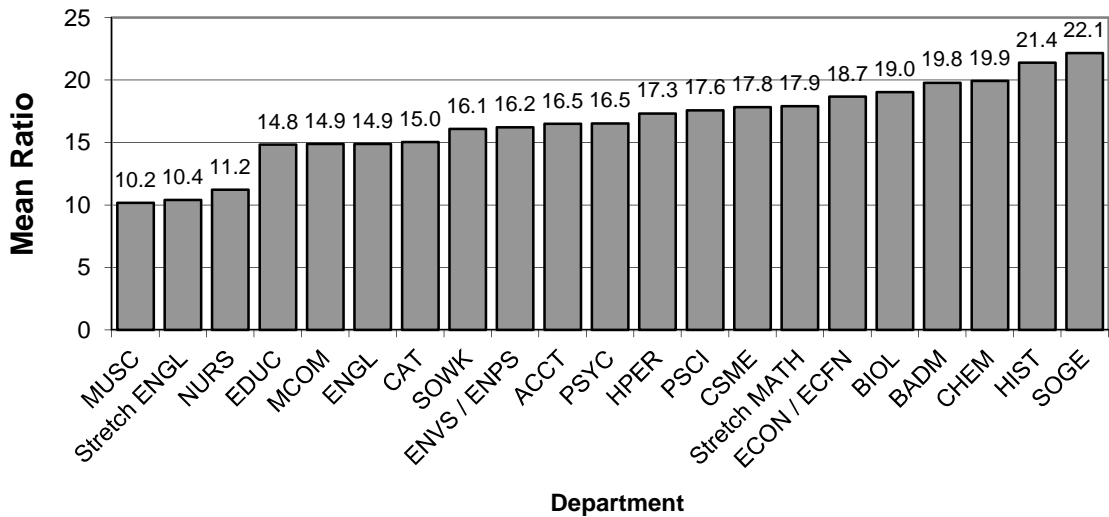


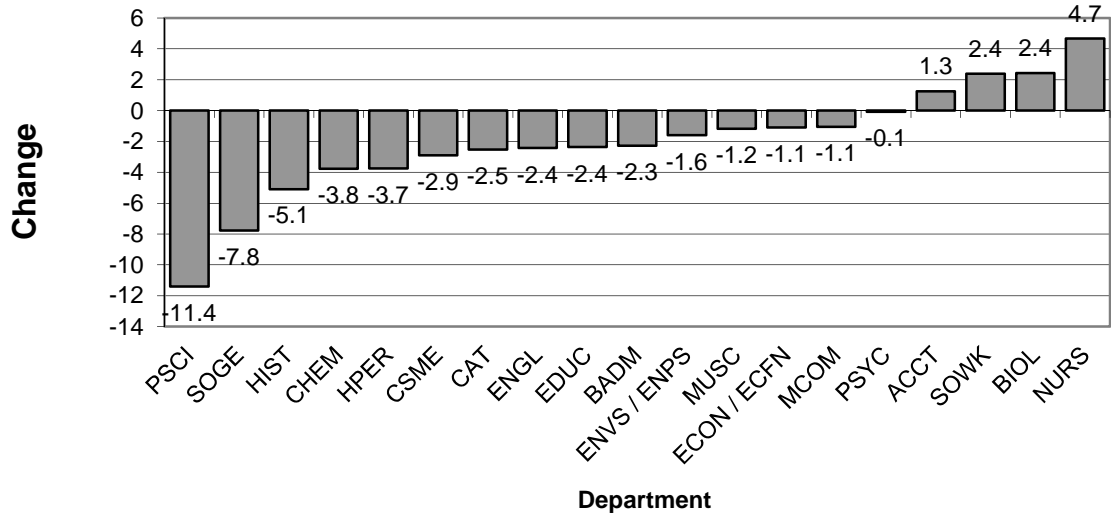
Table 12. Student-to-Faculty FTE Ratios in Upper Level Courses

Department	Fall 2012			Fall 2013			Fall 2014			Fall 2015			Fall 2016			Fall 2012-16			
	Ratio	% Chg.	A. Chg.	Ratio	% Chg.	A. Chg.	Ratio	% Chg.	A. Chg.	Ratio	% Chg.	A. Chg.	Faculty FTE	Student FTE	Ratio	% Chg.	A. Chg.	Mean Ratio	Change in Ratio
CAT	12.13	0.09	1.04	11.61	-0.04	-0.52	10.62	-0.09	-1.00	11.68	0.01	0.07	5.97	57.40	9.61	-0.18	-2.06	11.13	-2.52
MCOM	12.89	-0.05	-0.71	13.16	0.02	0.26	13.38	0.02	0.22	12.18	-0.07	-0.98	4.50	53.27	11.84	-0.03	-0.34	12.69	-1.06
ENGL	13.03	-0.01	-0.19	11.21	-0.14	-1.82	10.58	-0.06	-0.63	11.45	0.02	0.25	4.28	45.40	10.61	-0.07	-0.85	11.38	-2.42
HIST	16.55	0.07	1.05	14.67	-0.11	-1.88	18.70	0.27	4.03	14.75	0.01	0.08	3.68	42.20	11.47	-0.22	-3.29	15.23	-5.09
MUSC	8.26	-0.08	-0.68	7.93	-0.04	-0.33	6.18	-0.22	-1.75	5.21	-0.34	-2.72	6.77	47.97	7.09	0.36	1.87	6.93	-1.17
<i>A&H</i>	11.92	0.02	0.20	11.25	-0.06	-0.67	10.81	-0.04	-0.44	10.24	-0.09	-1.01	25.20	246.24	9.77	-0.05	-0.47	10.80	-2.15
ACCT	16.57	0.22	2.97	19.66	0.19	3.09	16.40	-0.17	-3.26	18.86	-0.04	-0.80	1.75	31.20	17.83	-0.05	-1.03	17.86	1.26
BADM	18.43	0.13	2.11	16.49	-0.11	-1.94	14.17	-0.14	-2.32	16.10	-0.02	-0.38	9.87	159.40	16.15	0.00	0.05	16.27	-2.28
ECON / ECFN	14.70	-0.07	-1.14	16.18	0.10	1.48	10.96	-0.32	-5.22	14.60	-0.10	-1.58	2.00	27.20	13.60	-0.07	-1.00	14.01	-1.10
PSCI	20.93	0.51	7.06	9.37	-0.55	-11.56	15.50	0.65	6.13	14.00	0.49	4.63	3.00	28.60	9.53	-0.32	-4.47	13.87	-11.40
PSYC	16.42	-0.11	-2.04	16.21	-0.01	-0.21	15.33	-0.05	-0.88	15.69	-0.03	-0.52	4.33	70.80	16.35	0.04	0.66	16.00	-0.07
SOGE	18.81	0.18	2.88	15.27	-0.19	-3.54	16.36	0.07	1.09	14.59	-0.04	-0.68	6.25	69.00	11.04	-0.24	-3.55	15.21	-7.77
SOWK	13.81	0.11	1.37	14.07	0.02	0.26	13.31	-0.05	-0.76	11.87	-0.16	-2.20	2.33	37.73	16.19	0.36	4.32	13.85	2.39
<i>BASS</i>	17.38	0.11	1.70	15.27	-0.12	-2.12	14.58	-0.04	-0.68	15.23	0.00	-0.04	29.53	423.93	14.36	-0.06	-0.87	15.36	-3.03
EDUC	11.04	-0.06	-0.70	10.79	-0.02	-0.25	10.79	0.00	0.00	9.33	-0.13	-1.46	10.86	94.27	8.68	-0.07	-0.65	10.13	-2.35
HPER	14.17	0.07	0.94	11.41	-0.19	-2.76	11.63	0.02	0.22	11.49	0.01	0.08	12.25	127.67	10.42	-0.09	-1.07	11.83	-3.75
NURS	19.59	0.01	0.25	24.31	0.24	4.72	25.81	0.06	1.50	24.38	0.00	0.06	6.92	167.80	24.25	-0.01	-0.13	23.67	4.66
<i>E&PS</i>	14.65	0.04	0.50	14.38	-0.02	-0.27	14.75	0.03	0.36	13.97	-0.03	-0.41	30.03	389.74	12.98	-0.07	-0.99	14.15	-1.67
BIOL	13.47	-0.10	-1.42	16.11	0.20	2.64	14.49	-0.10	-1.62	16.31	0.01	0.20	3.00	47.73	15.91	-0.02	-0.40	15.26	2.44
CHEM	19.50	0.03	0.60	17.40	-0.11	-2.10	18.79	0.08	1.39	16.49	-0.05	-0.90	2.26	35.53	15.72	-0.05	-0.77	17.58	-3.78
CSME	14.82	28.9%	3.32	12.86	-13.2%	-1.96	12.60	-2.0%	-0.26	12.10	-0.06	-0.76	6.42	76.47	11.91	-0.02	-0.19	12.86	-2.91
ENVS / ENPS	16.18	0.24	3.09	17.94	0.11	1.76	18.04	0.01	0.10	17.41	-2.9%	-0.52	2.83	41.27	14.58	-16.3%	-2.83	16.83	-1.60
<i>NS&M</i>	15.55	0.14	1.88	15.14	-0.03	-0.41	15.01	-0.01	-0.13	14.69	-3.0%	-0.45	14.51	201.00	13.85	-5.7%	-0.83	14.85	-1.70
Shepherd University	14.76	0.07	0.98	13.86	-0.06	-0.89	13.67	-0.01	-0.19	13.41	-3.3%	-0.46	99.27	1260.91	12.70	-5.3%	-0.70	13.68	-2.06

General Explanation/Definitions.

1. The **ratio** is obtained by dividing the student FTE by the faculty FTE.
2. **Upper level** includes 300 and 400 level courses.
3. The **% change** is the difference between the ratio in two consecutive years divided by the ratio of the earlier year.
4. The **annual change** (A. Chg.) is the current year's ratio minus the prior year's ratio.
5. The **mean ratio** is the sum of the annual ratios divided by the number of years for which data are presented (five years).
6. The **change in ratio** is the current year's ratio minus the earliest year's ratio.
7. Numbers include undergraduate instruction only.

Graph 12A: Change in Student FTE to Faculty FTE Ratios in Upper Level Courses, 2012 - 2016
(from Table 12)



Graph 12B: Mean Student FTE to Faculty FTE Ratios in Upper Level Courses, 2012 - 2016
(from Table 12)

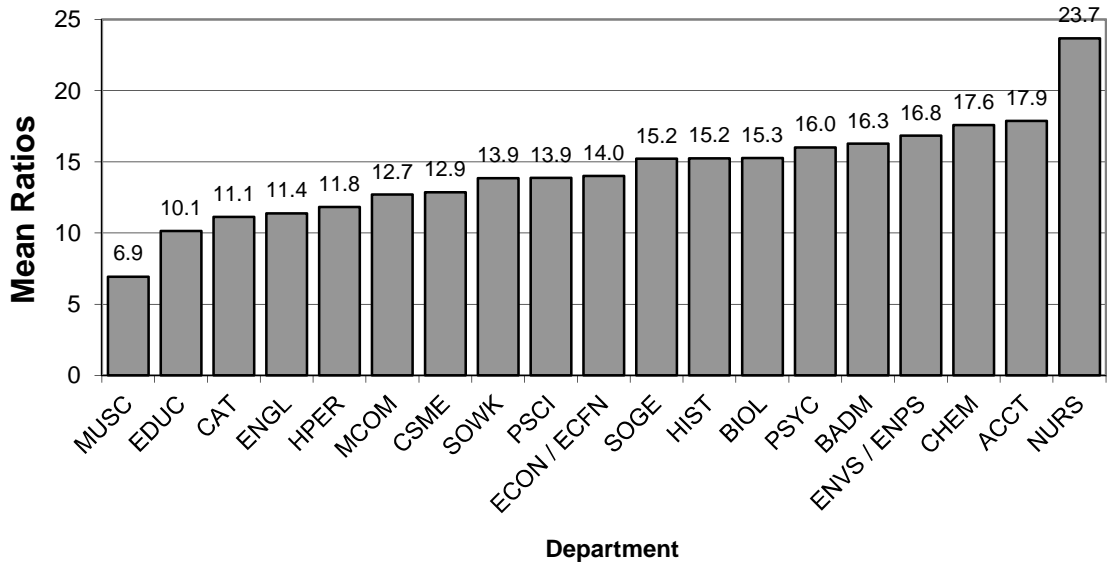
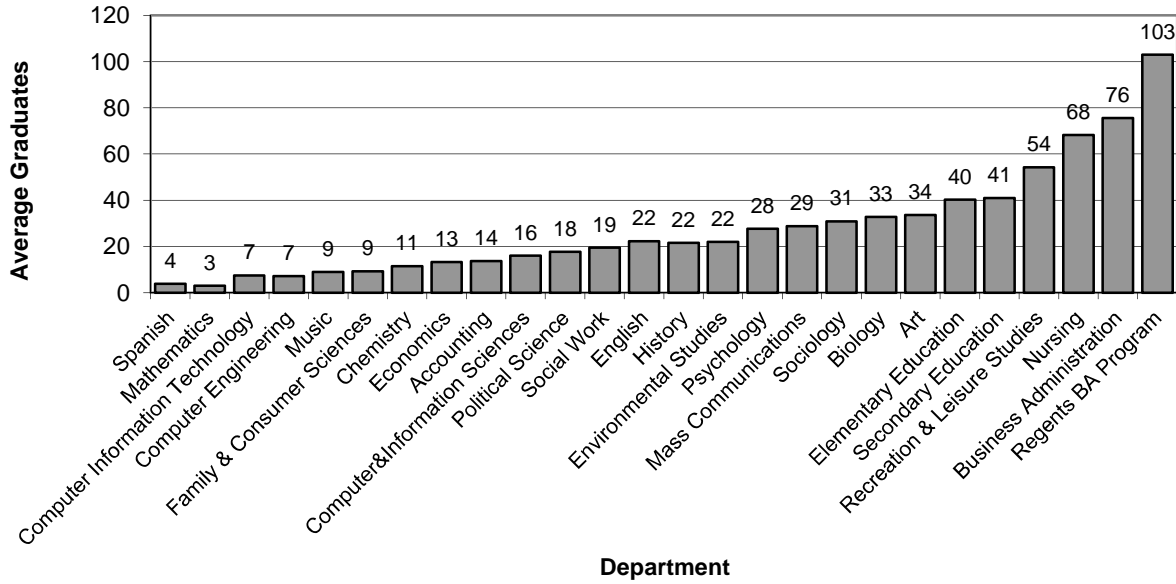


Table 13. Graduates from Baccalaureate Programs

MAJORS OF GRADUATES	2011-2012	2012-2013	2013-14	2014-15	2015-16	Mean N	Change	%age change
Art	34	35	34	34	31	33.6	-3	-8.8%
Mass Comm / Comm New Media	35	23	27	36	23	28.8	-12	-34.3%
English	22	23	26	19	21	22.2	-1	-4.5%
History	13	17	23	27	28	21.6	15	115.4%
Music	8	8	10	9	10	9.0	2	25.0%
Spanish	5	3	3	4	4	3.8	-1	-20.0%
<i>A&H</i>	<i>117</i>	<i>109</i>	<i>123</i>	<i>129</i>	<i>117</i>	<i>119.0</i>	<i>0</i>	<i>0.0%</i>
Accounting	9	12	14	19	14	13.6	5	55.6%
Business Administration	83	79	77	67	72	75.6	-11	-13.3%
Family & Consumer Sciences	11	7	12	8	8	9.2	-3	-27.3%
Economics	13	9	19	11	14	13.2	1	7.7%
Political Science	12	22	19	18	17	17.6	5	41.7%
Psychology	33	28	27	25	25	27.6	-8	-24.2%
Sociology	17	33	43	36	25	30.8	8	47.1%
Social Work	14	18	22	24	19	19.4	5	35.7%
<i>B&SS</i>	<i>192</i>	<i>208</i>	<i>233</i>	<i>208</i>	<i>194</i>	<i>207.0</i>	<i>2</i>	<i>1.0%</i>
Elementary Education	34	40	45	54	28	40.2	-6	-17.6%
Early Childhood Education					1	1.0	1	N/A
Secondary Education	35	44	35	44	47	41.0	12	34.3%
Art Education	9	4	3	1	5	4.4	-4	-44.4%
Biology Education	0	1	1	1	0	0.6	0	0.0%
Chemistry Education	0	0	0	1	0	0.2	0	0.0%
English Education	3	4	5	5	10	5.4	7	233.3%
Family & Consumer Sci Education	2	1	1	0	1	1.0	-1	-50.0%
General Science Education	0	2	0	0	1	0.6	1	N/A
Health Education	11	10	9	12	6	9.6	-5	-45.5%
Mathematics Education	3	3	7	7	2	4.4	-1	-33.3%
Music Education	7	11	13	11	16	11.6	9	128.6%
Physical Education	14	11	9	13	6	10.6	-8	-57.1%
Social Studies Education	5	11	8	7	5	7.2	0	0.0%
Spanish Education	1	1	0	0	1	0.6	0	0.0%
Recreation & Leisure Studies	51	38	55	76	51	54.2	0	0.0%
Nursing	52	63	72	75	79	68.2	27	51.9%
<i>E&PS</i>	<i>172</i>	<i>185</i>	<i>207</i>	<i>249</i>	<i>206</i>	<i>203.8</i>	<i>34</i>	<i>19.8%</i>
Biology	30	31	36	33	34	32.8	4	13.3%
Chemistry	8	12	13	11	13	11.4	5	62.5%
Computer&Information Sciences	20	13	19	13	15	16.0	-5	-25.0%
Computer Engineering	3	7	10	11	5	7.2	2	66.7%
Computer Information Technology	5	3	4	11	14	7.4	9	180.0%
Environmental Studies	17	24	31	13	25	22.0	8	47.1%
Mathematics	3	3	2	1	6	3.0	3	100.0%
<i>NS&M</i>	<i>86</i>	<i>93</i>	<i>115</i>	<i>93</i>	<i>112</i>	<i>99.8</i>	<i>26</i>	<i>30.2%</i>
Regents BA Program	123	102	91	111	88	103.0	-35	-28.5%
Shepherd University	690	697	769	790	717	732.6	27	3.9%

1. Numbers are counts of graduates for the academic year listed. For this table, the academic year is considered to run from fall through spring to summer.
2. The **mean** is the sum of the annual counts divided by the number of years for which data are presented (five years).
3. The **change** is the current year's number minus the first year's number.

Graph 13A: Average Number of Baccalaureate Degrees by Major, 2011-2012 to 2015-2016 (from Table 13)



Graph 13B: Baccalaureate Graduates in 2015-2016 (from Table 13)

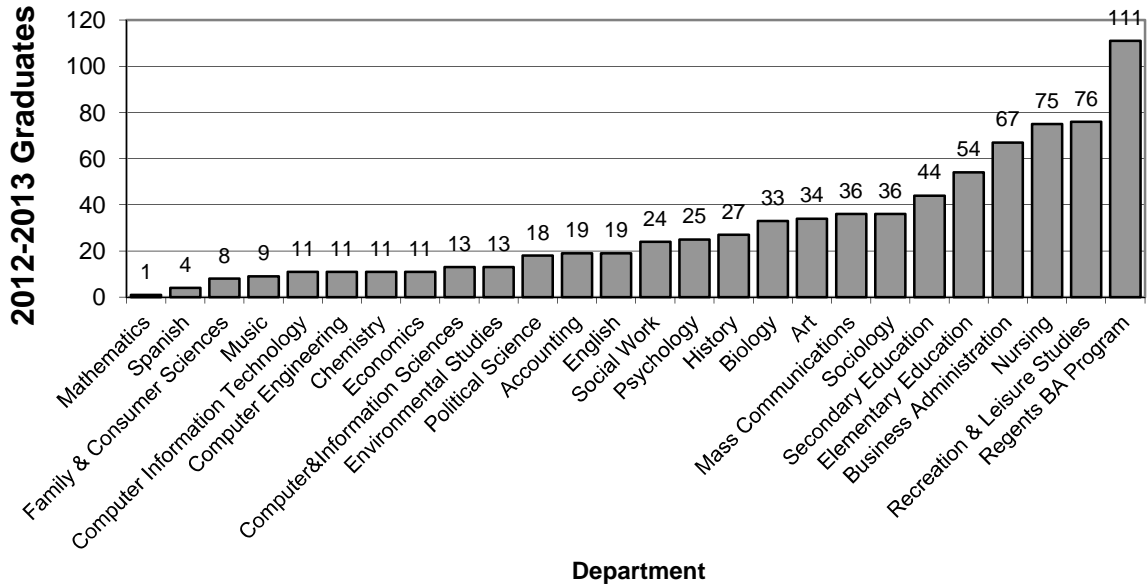


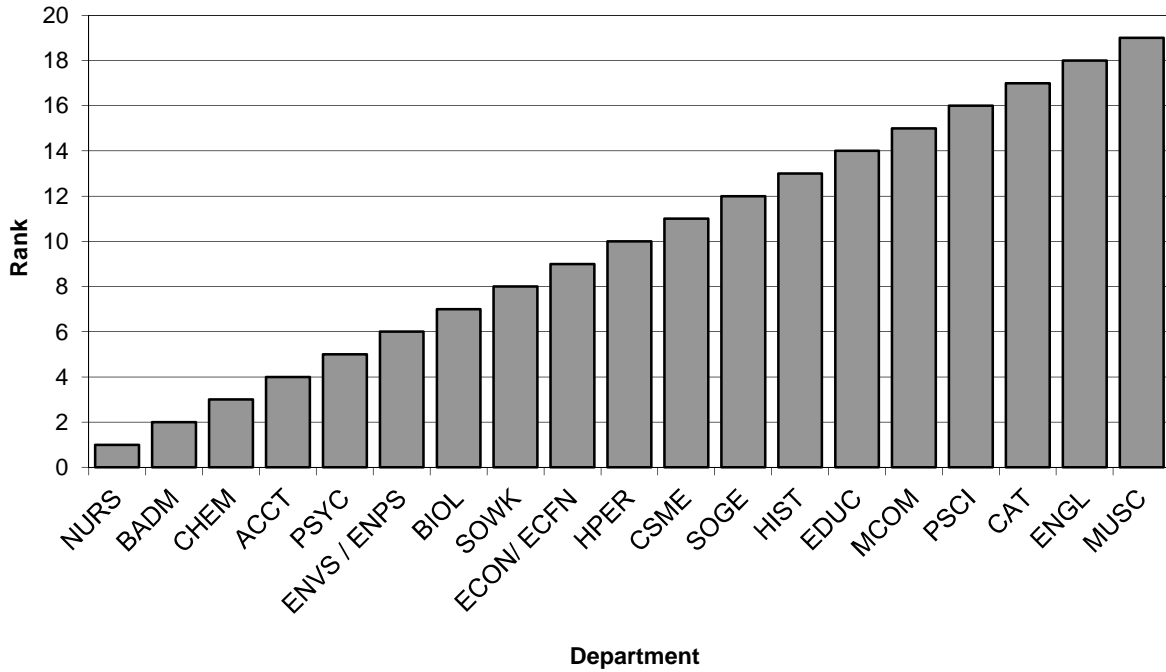
Table 14. SCH per FTE faculty, for non-General Studies / Core Curriculum Courses

Department	Fall 2016 numbers per FTE faculty				Fall 2012 - 2016 numbers per FTE faculty	
	FTE fac	SCH	SCH/FTE	SCH/FTE rank	Mean SCH/FTE	SCH/FTE rank
ACCT	3.00	714.00	238.00	4	251.46	4
BADM	10.96	3245.00	296.08	2	274.52	2
BIOL	7.29	1503.00	206.17	7	197.06	8
CAT	11.22	1455.00	129.68	17	151.46	17
CHEM	2.59	629.00	242.86	3	261.95	3
CSME	11.75	1920.00	163.40	11	174.90	13
ECON/ ECFN	2.89	519.00	179.58	9	192.13	11
EDUC	11.35	1624.00	143.08	14	160.95	16
ENGL	7.28	767.00	105.36	18	128.53	18
ENVS / ENPS	3.25	699.00	215.08	6	218.91	7
HIST	5.01	739.00	147.50	13	166.46	14
HPER	21.28	3621.00	170.16	10	193.85	10
MCOM	5.62	799.00	142.17	15	175.26	12
MUSC	11.39	1198.00	105.18	19	109.31	19
NURS	6.83	2507.00	367.06	1	298.55	1
PSCI	3.00	414.00	138.00	16	165.97	15
PSYC	7.08	1571.00	221.89	5	222.39	6
SOGE	8.38	1269.00	151.43	12	226.61	5
SOWK	3.46	641.00	185.26	8	196.83	9
Shepherd University	143.63	25834	179.86		191.90	

General Explanation/Definitions.

1. One faculty **FTE** (full-time equivalent) equals 12 hours of instructional responsibility.
2. **Majors** is the number of majors served by the program.
3. **Grads** is the number of graduates from the program.
4. **SCH** is the total number of credit hours taken by students in courses in the department.
5. **Rank** is a numerical ranking of the department based on the number in question. Ranks run from 1 (highest rank) to 19 (lowest rank).
6. Numbers are for paid courses in undergraduate programs only.
7. Courses are all courses **not** explicitly listed as General Studies or Core Curriculum courses in the appropriate Shepherd course catalogs. All GSPE courses are considered General Studies, but no foreign language courses are included (as these are General Studies requirements for B.A. programs only). Also, the Core Curriculum requirements in Writing in the Major and Capstone in the Major are not considered as Core Curriculum courses here.
8. Faculty FTE numbers for General Studies / Core Curriculum courses cannot be directly or indirectly calculated from available data. Therefore, the numbers used here are calculated based on credit-hours of courses as taken by students, not as calculated for faculty workload reporting. This results in numbers discrepant from those used elsewhere for some departments.

Graph 14A. Overall rank, Fall 2016, non-GS/CC courses



Graph 14B. Overall rank, Fall 2012 - 2016, non-GS/CC courses

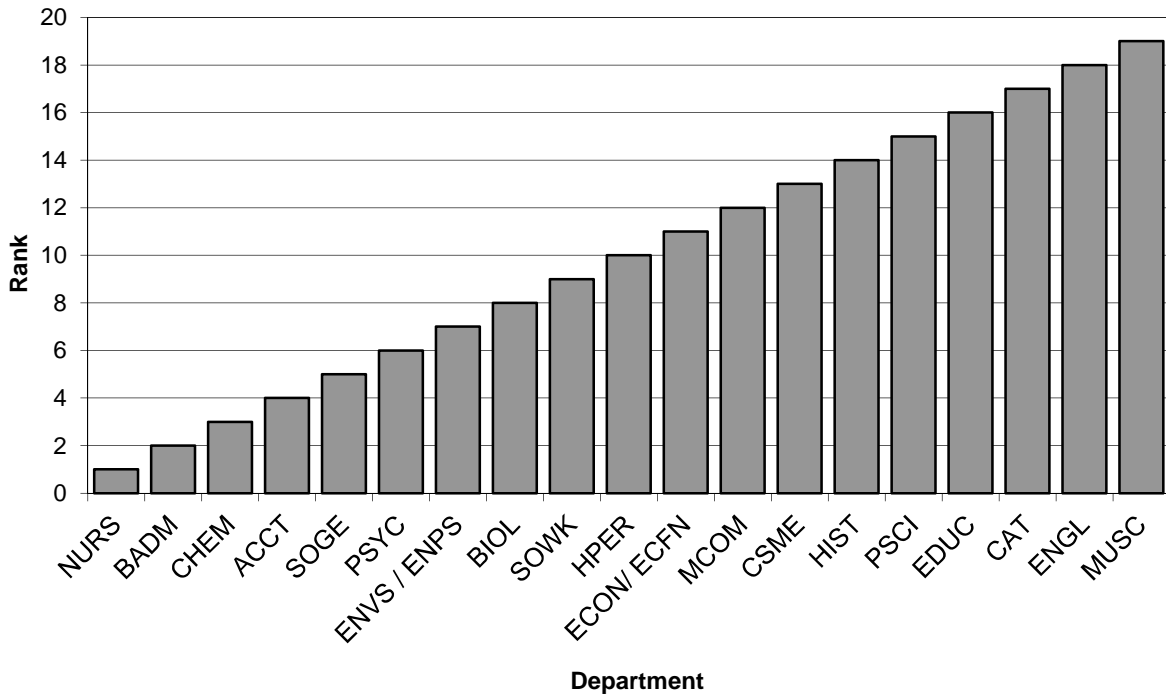


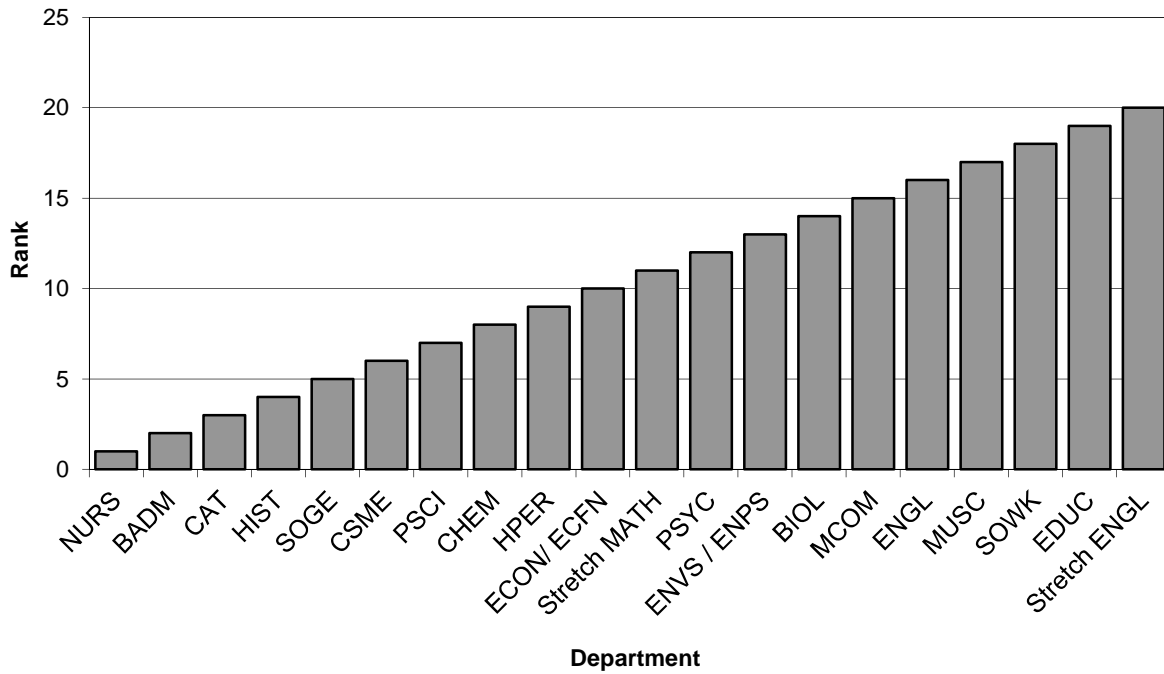
Table 15. SCH per FTE Faculty, for General Studies / Core Curriculum Courses

Department	Fall 2016 numbers per FTE faculty				Fall 2012 - 2016 numbers per FTE faculty	
	FTE fac	SCH	SCH/FTE	SCH/FTE rank	Mean SCH/FTE	SCH/FTE rank
ACCT						
BADM	0.75	279.00	372.00	2	386.18	1
BIOL	5.00	1196.00	239.20	14	258.59	13
CAT	3.00	888.00	296.00	3	311.27	5
CHEM	3.83	1013.00	264.49	8	300.00	6
CSME	5.48	1524.00	278.10	6	292.88	7
ECON/ ECFN	3.50	891.00	254.57	10	282.68	8
EDUC	1.75	297.00	169.71	19	218.00	18
ENGL	13.00	2706.00	208.15	16	227.95	17
ENVS / ENPS	4.33	1048.00	242.03	13	228.70	16
HIST	6.00	1755.00	292.50	4	373.72	2
HPER	4.58	1167.00	254.80	9	270.61	11
MCOM	2.50	585.00	234.00	15	229.36	14
MUSC	1.92	361.00	188.02	17	229.07	15
NURS	0.50	198.00	396.00	1	320.00	4
PSCI	2.00	537.00	268.50	7	270.71	10
PSYC	3.25	801.00	246.46	12	275.57	9
SOGE	3.74	1062.00	283.96	5	323.12	3
SOWK	0.08	14.00	175.00	18	125.00	20
Stretch English	1.33	224.00	168.42	20	150.36	19
Stretch Math	2.49	626.00	251.41	11	268.81	12
Shepherd University	69.03	17172	248.76		268.73	

General Explanation/Definitions.

1. One faculty **FTE** (full-time equivalent) equals 12 hours of instructional responsibility.
2. **Majors** is the number of majors served by the program.
3. **Grads** is the number of graduates from the program.
4. **SCH** is the total number of credit hours taken by students in courses in the department.
5. **Rank** is a numerical ranking of the department based on the number in question. Ranks run from 1 (highest rank) to 14 or 15 (lowest rank).
6. Numbers are for paid courses in undergraduate programs only.
7. Courses are all courses explicitly listed as General Studies or Core Curriculum courses in the appropriate Shepherd course catalogs. All GSPE courses are considered General Studies, but no foreign language courses are included (as these are General Studies requirements for B.A. programs only). Also, the Core Curriculum requirements in Writing in the Major and Capstone in the Major are not considered as Core Curriculum courses here.
8. Faculty FTE numbers for General Studies / Core Curriculum courses cannot be directly or indirectly calculated from available data. Therefore, the numbers used here are calculated based on credit-hours of courses as taken by students, not as calculated for faculty workload reporting. This results in numbers discrepant from those used elsewhere for some departments.

Graph 15A. Overall rank, Fall 2016, GS/CC courses



Graph 15B. Overall rank, Fall 2012 - 2016, GS/CC courses

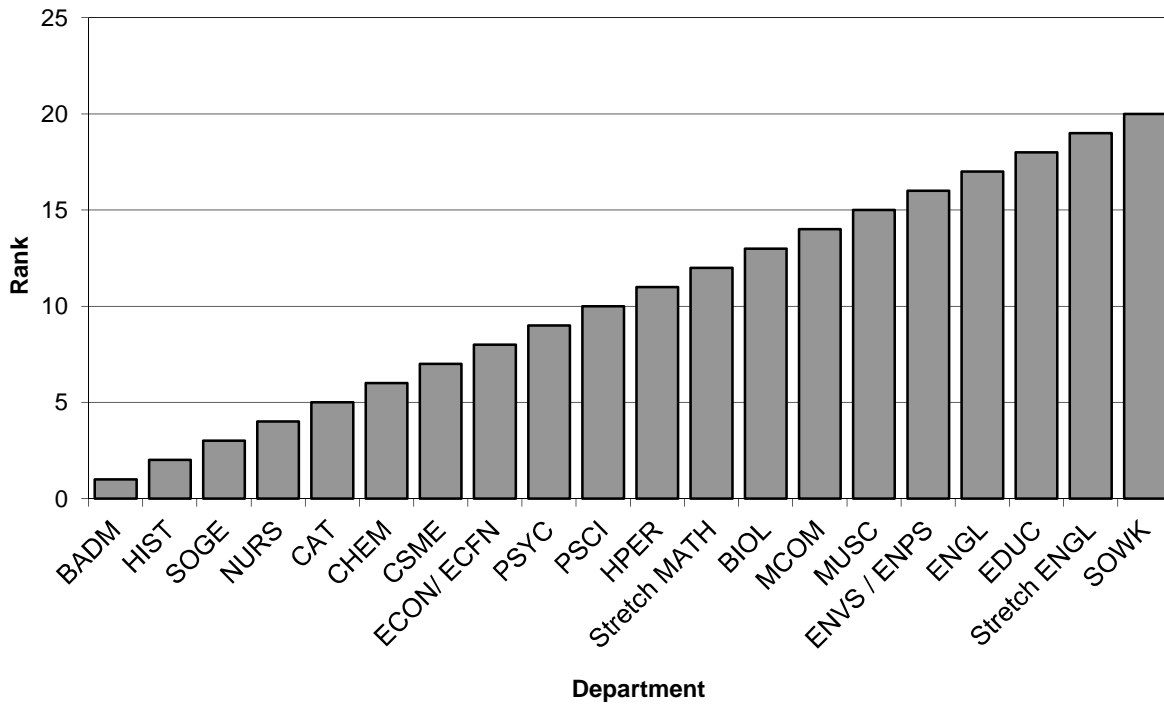


Table 16. Core Curriculum courses by time of day, Fall 2016

Time	Weekdays												Saturday	
	Monday		Tuesday		Wednesday		Thursday		Friday		Total		N	% tot
	N	% tot	N	% tot	N	% tot	N	% tot	N	% tot	N	% tot		
7:00 AM	0	0.0%	0	0.0%	0	0.0%	0	0.0%	0	0.0%	0	0.0%	0	N/A
8:00 AM	15	4.5%	7	2.4%	15	4.6%	7	2.8%	13	5.1%	57	3.9%	0	N/A
9:00 AM	41	12.2%	28	9.8%	41	12.5%	25	10.0%	39	15.2%	174	11.9%	0	N/A
10:00 AM	54	16.1%	24	8.4%	54	16.5%	21	8.4%	49	19.1%	202	13.9%	0	N/A
11:00 AM	52	15.5%	33	11.5%	52	15.9%	30	12.0%	48	18.8%	215	14.8%	0	N/A
12:00 PM	42	12.5%	48	16.8%	42	12.8%	45	17.9%	39	15.2%	216	14.8%	0	N/A
1:00 PM	31	9.2%	39	13.6%	32	9.8%	35	13.9%	29	11.3%	166	11.4%	0	N/A
2:00 PM	29	8.6%	26	9.1%	27	8.2%	21	8.4%	24	9.4%	127	8.7%	0	N/A
3:00 PM	23	6.8%	35	12.2%	22	6.7%	31	12.4%	12	4.7%	123	8.4%	0	N/A
4:00 PM	16	4.8%	19	6.6%	15	4.6%	18	7.2%	3	1.2%	71	4.9%	0	N/A
5:00 PM	10	3.0%	9	3.1%	12	3.7%	10	4.0%	0	0.0%	41	2.8%	0	N/A
6:00 PM	8	2.4%	9	3.1%	6	1.8%	5	2.0%	0	0.0%	28	1.9%	0	N/A
7:00 PM	8	2.4%	5	1.7%	6	1.8%	2	0.8%	0	0.0%	21	1.4%	0	N/A
8:00 PM	5	1.5%	4	1.4%	3	0.9%	1	0.4%	0	0.0%	13	0.9%	0	N/A
9:00 PM	2	0.6%	0	0.0%	1	0.3%	0	0.0%	0	0.0%	3	0.2%	0	N/A
10:00 PM	0	0.0%	0	0.0%	0	0.0%	0	0.0%	0	0.0%	0	0.0%	0	N/A
11:00 PM	0	0.0%	0	0.0%	0	0.0%	0	0.0%	0	0.0%	0	0.0%	0	N/A
Total	336	23.1%	286	19.6%	328	22.5%	251	17.2%	256	17.6%	1457	100.0%	0	N/A

Data derive from census-date Banner data.

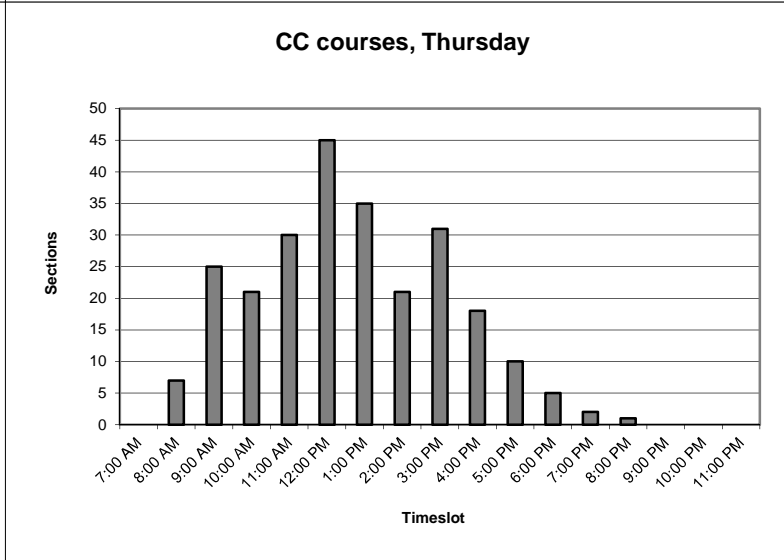
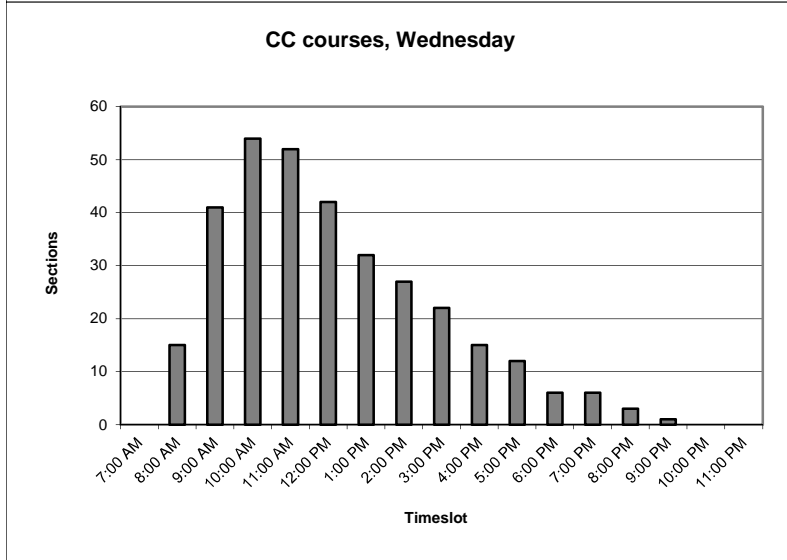
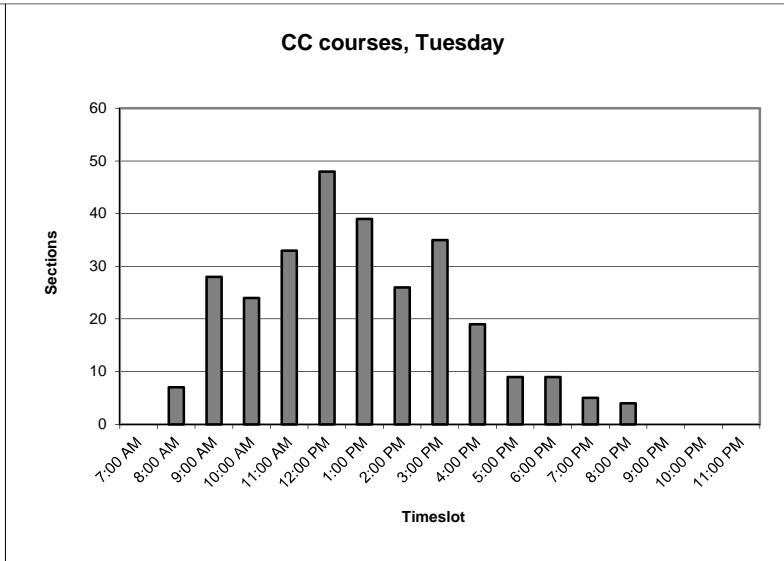
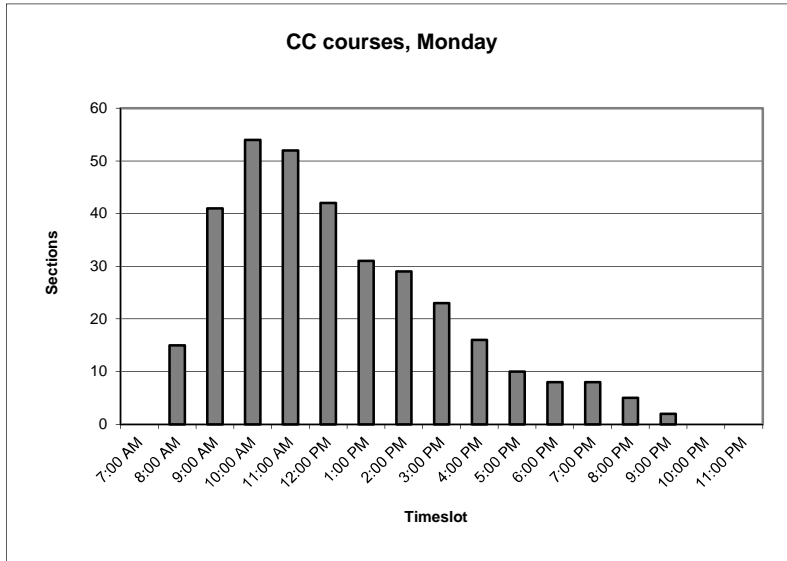
Courses are all courses explicitly listed as Core Curriculum courses in the current Shepherd catalog. The Core Curriculum requirements in Writing in the Major and Capstone in the Major are not included here.

"Time" indicates the timeslot in which the class is running. For example, "10:00 AM" courses are those courses that are in session from 10:00 AM to 10:59 AM. These courses may start at some point during that hour, or may have started earlier and still be in session for part or all of that hour.

"% tot" is the percentage of the column total. In the "Total" line, percentages are computed based upon the line total (excepting Saturdays).

Courses with no scheduled times in Banner ("TBA") are not included here. In Fall 2016, there were 17 of these.

Graphs 16A. Core Curriculum courses by time of day, Monday - Thursday



Graphs 16B. Core Curriculum courses by time of day, Friday, weekdays and Saturday

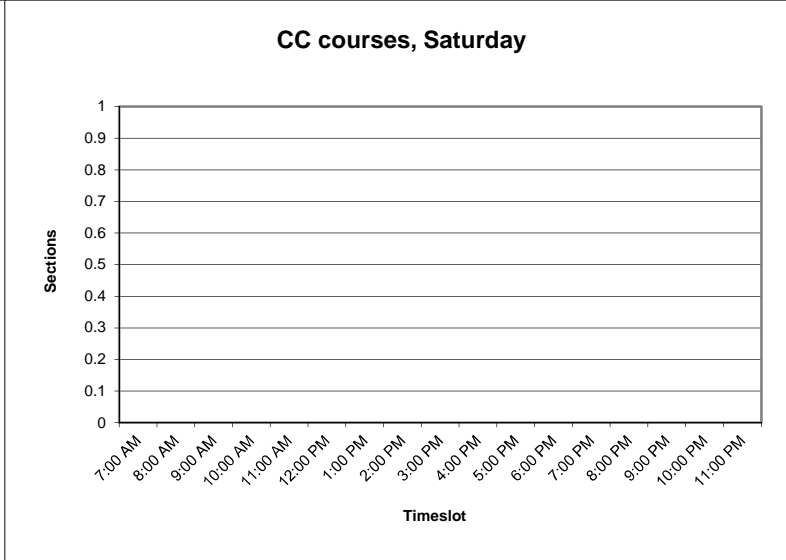
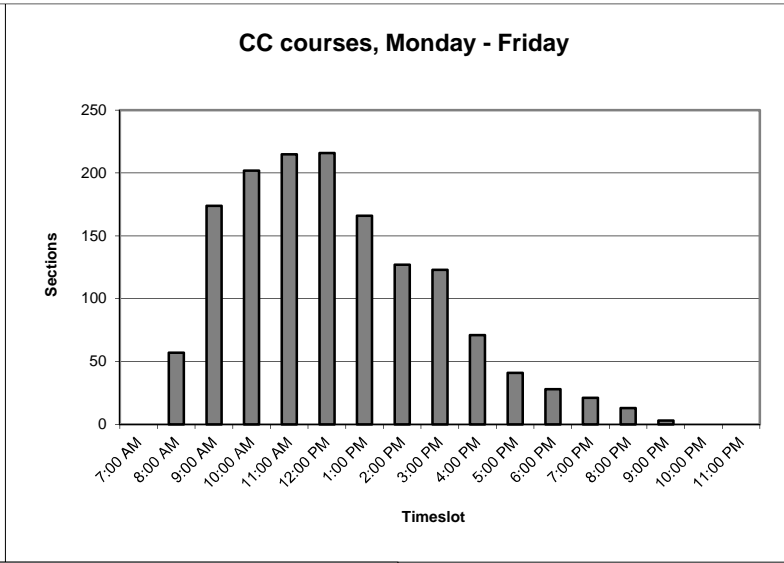
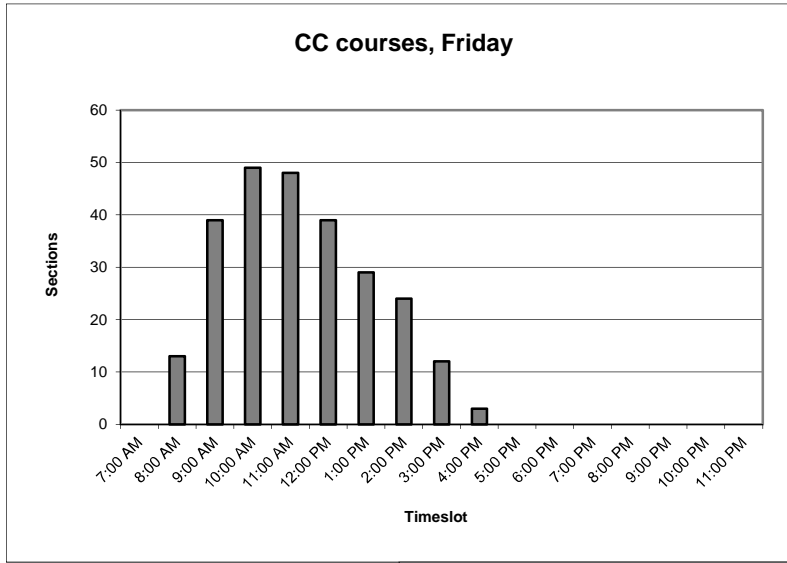


Table 17. Core Curriculum courses offered in standard timeslots, weekdays

Standard start time	Monday		Tuesday		Wednesday		Thursday		Friday		Saturday		Overall	
	N	%	N	%	N	%	N	%	N	%	N	%	N	%
Nonstandard	15	9.4%	18	14.8%	16	10.2%	14	12.8%	0	0.0%	0	N/A	63	9.3%
Standard	144	90.6%	104	85.2%	141	89.8%	95	87.2%	128	100.0%	0	N/A	612	90.7%
Total	159	100.0%	122	100.0%	157	100.0%	109	100.0%	128	100.0%	0	N/A	675	100.0%

Data derive from census-date Banner data.

"Standard" start times are those listed in the Fall semester course catalog with defined final exam schedules. These are:
 MWF: 8:10 AM, 9:10 AM, 10:10 AM, 11:10 AM, 12:10 PM, 1:10 PM, 2:10 PM, 3:10 PM.
 TR: 8:10 AM, 9:35 AM, 11:00 AM, 12:25 PM, 1:50 PM, 3:15 PM.

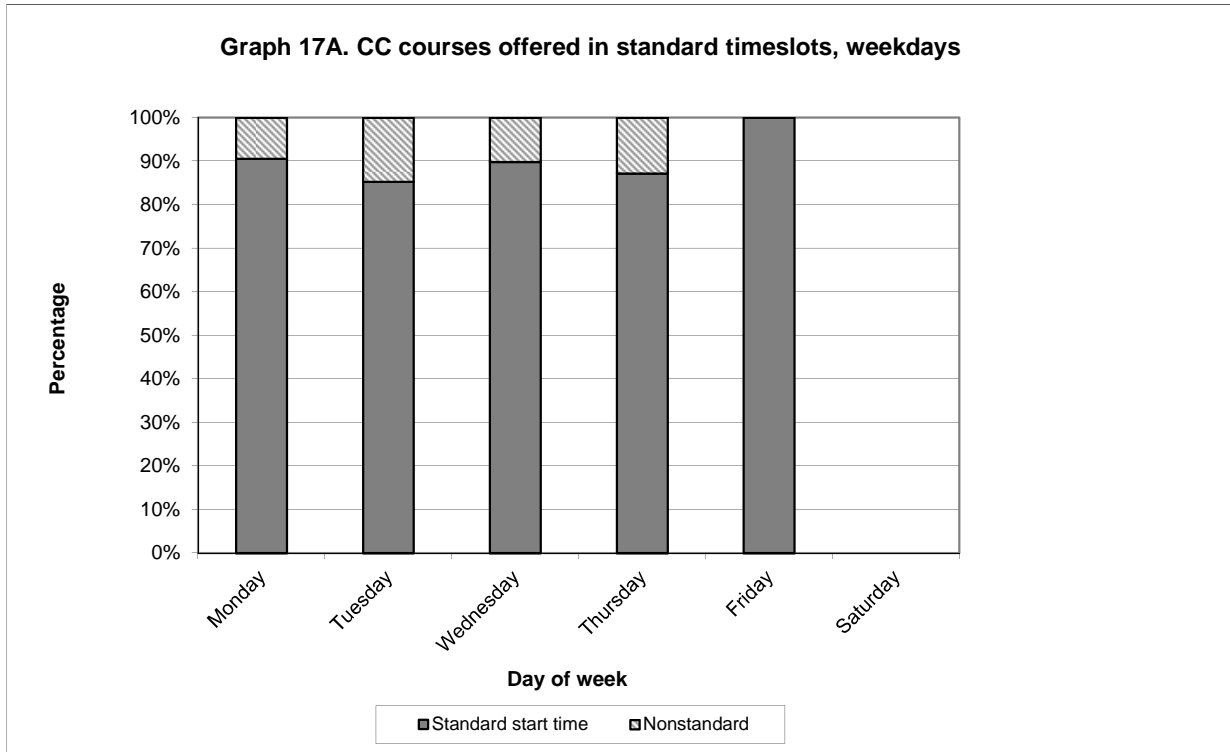


Table 18. Online and hybrid courses, Fall 2012 - Fall 2016

	Fall 2012		Fall 2013		Fall 2014		Fall 2015		Fall 2016		Total		Average	
	N	% all	N	% all	N	% all	N	% all	N	% all	N	% all	N	% all
Hybrid	1	0.1%	2	0.2%	5	0.4%	6	0.5%	3	0.3%	17	0.3%	3.4	0.3%
Online	12	1.0%	17	1.5%	29	2.5%	38	3.4%	64	5.7%	160	2.8%	32	2.8%
All courses	1162		1147		1140		1119		1130		5698		1139.6	

All data derive from HEPC census-date data submissions.

"Hybrid" courses are courses with more than 50% online delivery.

"Online" courses are those courses taught entirely online.

"Courses" are sections which receive a unique CRN from the Registrar.

"% all" is the percentage of all courses taught that semester represented by the line. For example, for Fall 2016, the 64 online courses represent 5.7% of the total of 1130 courses taught that semester.

The HEPC data from which these numbers derive allows for three categories of online courses up through Fall 2013:

100% non-traditional delivery (labeled as "Online" here)

50% - 99% non-traditional delivery (labeled as "Hybrid" here)

Less than 50% non-traditional delivery (included in "All courses", but not listed separately here)

"Non-traditional delivery" can include electronic or analog delivery (e.g., correspondence courses, satellite courses), but in practice usually indicates online delivery.

As of Fall 2014, the "50% - 99%" category is subdivided into "50% - 74%" and "75% - 99%" categories; I have summed these two back together into "Hybrid" here.

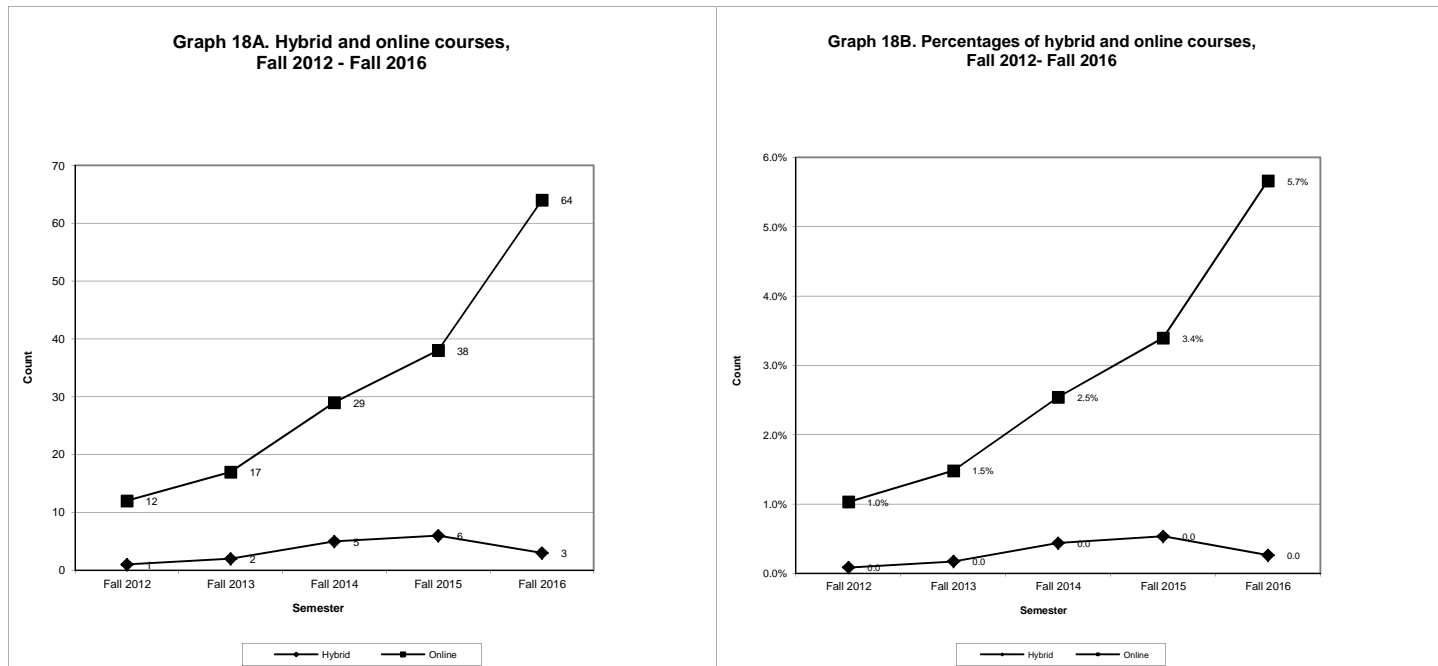


Table 19. Students Enrolled in Graduate Programs

Program	Fall 2012		Fall 2013		Fall 2014		Fall 2015		Fall 2016		Fall 2012-16	
	FTE	HC	FTE	HC	FTE	HC	FTE	HC	FTE	HC	Mean FTE	Change in FTE
Business Administration	44.83	80	47.75	79	52.83	78	41.00	65	50.25	82	47.33	5.42
Curriculum and Instruction	6.75	20	6.75	18	10.75	26	7.50	22	7.75	18	7.90	1.00
Music Education	1.58	7	1.50	6	3.00	10	2.00	5	0.00	0	1.62	-1.58
Student Development and Administration	16.83	28	24.00	38	21.00	34	17.83	27	17.00	26	19.33	0.17
Teaching	17.08	21	26.92	33	27.25	36	17.08	26	17.83	25	21.23	0.75
DNP	N/A	N/A	N/A	N/A	N/A	N/A	12.17	15	15.92	22	14.05	15.92
Shepherd University	87.07	156	106.92	174	114.83	184	96.50	159	108.75	173	102.81	21.68

General Explanation / Definitions.

1. The student **FTE** (full-time equivalent) equals 12 credit hours.
2. The **HC** is the headcount of students enrolled in and taking courses in the degree program.
3. The **mean FTE** is the average FTE for the years shown.
4. The **change in FTE** is the change in the FTE from the current year to the earliest year shown.
5. Each student is counted once in each program in which s/he is enrolled. Students enrolled in multiple programs are thus counted more than once. FTE and HC totals, however, are nonduplicated - each student is counted once regardless of the number of programs s/he is enrolled in. Thus, HC and FTE totals may not match totals across the individual programs.

Table 20. Graduates from Graduate Programs

Program	2011-12	2012-13	2013-14	2014-15	2015-16	Mean N	Change
Business Administration	21	31	35	40	17	28.8	-4.0
Curriculum and Instruction	9	12	4	4	9	7.6	0.0
Music Education	6	4	0	3	3	3.2	-3.0
Student Development and Administration	18	10	13	19	11	14.2	-7.0
Teaching	11	4	12	11	15	10.6	4.0
DNP					0	0	0.0
Shepherd University	65	61	64	77	55	64.4	-10.0

Numbers of graduates are computed using the fall, spring, and following summer of the stated year.

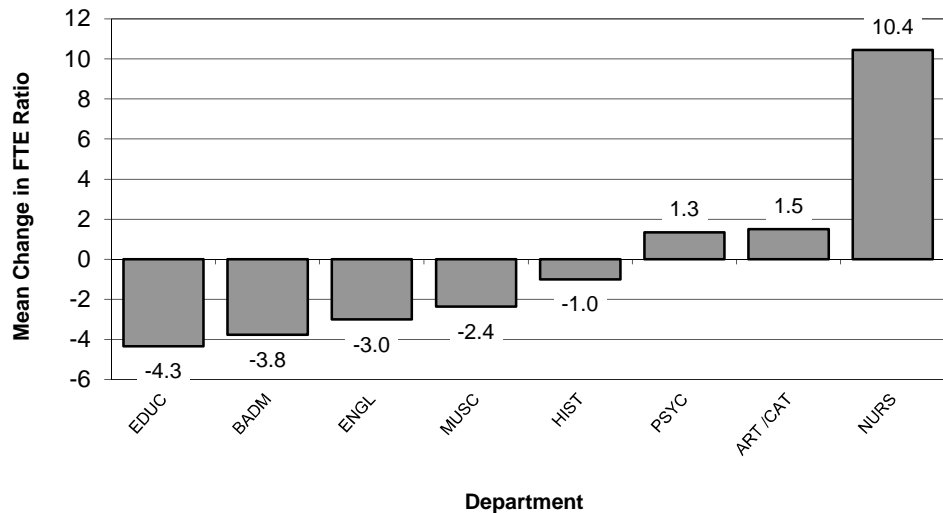
Table 21. Graduate Student to Faculty FTE Ratios

Department	Fall 2012			Fall 2013			Fall 2014			Fall 2015			Fall 2016			Fall 2012-16		
	F-FTE	S-FTE	Ratio	F-FTE	S-FTE	Ratio	F-FTE	S-FTE	Ratio	F-FTE	S-FTE	Ratio	F-FTE	S-FTE	Ratio	Change	Mean Ratio	Change in Ratio
CAT	0.00	0.00	N/A	0.00	0.00	N/A	0.25	0.25	1.00	0.25	0.25	1.00	0.50	0.75	1.50	0.50	0.88	1.50
BADM	3.75	44.25	11.80	5.25	48.25	9.19	5.48	54.00	9.85	5.50	42.75	7.77	6.56	52.75	8.04	0.27	7.78	-3.76
EDUC	2.25	20.50	9.11	3.75	26.75	7.13	4.25	33.25	7.82	5.00	22.00	4.40	4.50	21.50	4.78	0.38	5.54	-4.33
ENGL	0.25	0.75	3.00	0.50	0.75	1.50	0.25	0.50	2.00	0.00	0.00	N/A	0.42	1.67	N/A	N/A	1.63	-3.00
HIST	0.25	0.25	1.00	0.00	0.00	N/A	0.00	0.00	N/A	0.00	0.00	N/A	0.00	0.00	N/A	N/A	0.50	-1.00
MUSC	0.67	1.58	2.36	0.33	1.25	3.79	0.67	2.50	3.73	0.50	1.00	2.00	0.00	0.00	N/A	N/A	2.38	-2.36
NURS	0.00	0.00	N/A	0.25	0.25	1.00	0.00	0.00	N/A	1.08	11.42	10.57	1.50	15.67	10.45	10.45	5.51	10.45
PSYC	1.58	16.83	10.65	1.50	24.00	16.00	1.50	21.00	14.00	1.50	16.00	10.67	1.50	18.00	12.00	1.33	10.55	1.35
Shepherd University	8.75	84.16	9.62	11.58	101.25	8.74	12.40	111.50	8.99	13.83	93.42	6.75	14.98	110.34	7.37	0.61	6.91	-2.25

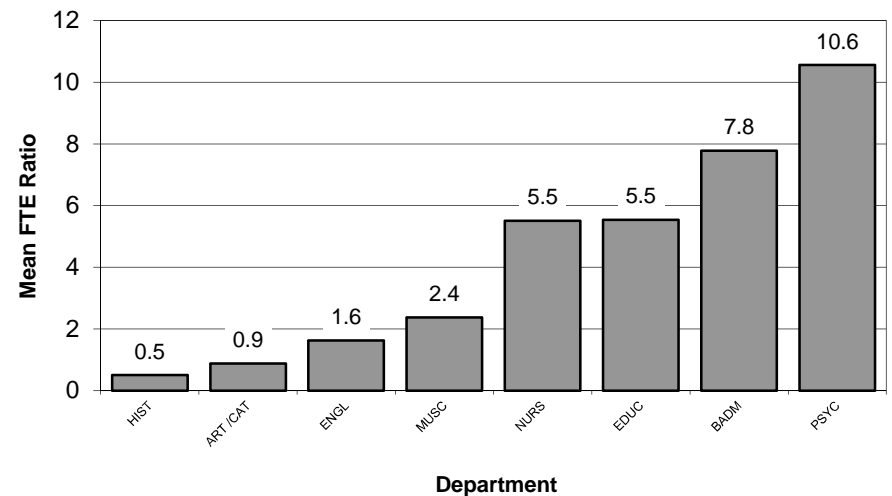
General Explanation/Definitions.

1. The **ratio** is obtained by dividing the student FTE by the faculty FTE.
2. One faculty **FTE** (full-time equivalent) equals 12 hours of instructional responsibility and one student FTE equals 12 credit hours. The ratio is the student FTE divided by the faculty FTE.
3. The annual **change** is the current year's ratio minus the prior year's ratio.
4. The **mean ratio** is the sum of the annual ratios divided by the number of years for which data exist.
5. The **change in ratio** is the current year's ratio minus the first year's ratio.
6. Numbers are for paid courses only.

Graph 20A: Mean Change in FTE Ratios (Student FTE: Faculty FTE) for Graduate Courses, 2012-2016
(from Table 20)



Graph 20B: Mean FTE Ratios (Student FTE: Faculty FTE) for Graduate Courses, 2012-2016
(from Table 20)



Except for Tables 22 and 29-31, all tables are for undergraduate degree-seeking students only and the census date (10/15/16) HEPC Student file is the source of data. Only credit-earning students are counted unless noted otherwise.

Table 22. Degree Targets

	Bacc	None	Master's	DNP	Total
4-Year	3095	558	151	22	3826

(Includes noncredit students)

Table 23. ACT and ACT Equivalent Scores by Residency

	ACT		ACT Equivalent		Total	
	N	Mean	N	Mean	N	Mean
Eastern Panhandle	1027	21.7	295	21.7	1322	21.7
<i>Berkeley</i>	629	21.6	127	20.8	756	21.5
<i>Jefferson</i>	345	21.7	163	22.3	508	21.9
<i>Morgan</i>	53	21.8	5	25.0	58	22.1
Other WV counties	209	23.1	10	22.5	219	23.1
MD	96	20.2	378	21.4	474	21.2
VA	48	20.9	132	21.0	180	21.0
PA	9	23.4	39	21.3	48	21.7
Other US states	25	20.5	35	19.5	60	19.9
International	0	N/A	4	20.8	4	20.8
Total	1414	21.8	893	21.3	2307	21.6

National ACT scores, class of 2016:

Mean 20.8

WV ACT scores, class of 2016:

Mean 20.7

Note: Some students submitted both ACT and SAT scores at the time of admission. Students doing so chose one or the other as the preferred score type; only those scores are used for these tables. Some students submitted neither score.

Table 24. Status by Residency, Five-Year Trends

	Full-Time											
	Fall 2012		Fall 2013		Fall 2014		Fall 2015		Fall 2016		Total	
	N	%	N	%	N	%	N	%	N	%	N	%
Eastern Panhandle	1796	46.6%	1706	46.2%	1631	46.7%	1550	46.7%	1472	47.6%	8155	46.7%
<i>Berkeley</i>	1030	26.7%	993	26.9%	920	26.4%	902	27.2%	850	27.5%	4695	26.9%
<i>Jefferson</i>	675	17.5%	638	17.3%	633	18.1%	581	17.5%	551	17.8%	3078	17.6%
<i>Morgan</i>	91	2.4%	75	2.0%	78	2.2%	67	2.0%	71	2.3%	382	2.2%
Other WV counties	327	8.5%	297	8.0%	255	7.3%	251	7.6%	231	7.5%	1361	7.8%
MD	808	21.0%	770	20.8%	745	21.4%	718	21.6%	631	20.4%	3672	21.0%
VA	357	9.3%	333	9.0%	300	8.6%	263	7.9%	228	7.4%	1481	8.5%
PA	71	1.8%	70	1.9%	56	1.6%	61	1.8%	60	1.9%	318	1.8%
Other US states	108	2.8%	99	2.7%	89	2.6%	81	2.4%	66	2.1%	443	2.5%
International	15	0.4%	13	0.4%	14	0.4%	10	0.3%	9	0.3%	61	0.3%
Total	3482	90.4%	3288	89.0%	3090	88.6%	2934	88.4%	2697	87.2%	15491	88.8%

	Part-Time											
	Fall 2012		Fall 2013		Fall 2014		Fall 2015		Fall 2016		Total	
	N	%	N	%	N	%	N	%	N	%	N	%
Eastern Panhandle	264	6.9%	285	7.7%	279	8.0%	282	8.5%	277	9.0%	1387	7.9%
<i>Berkeley</i>	149	3.9%	161	4.4%	150	4.3%	164	4.9%	166	5.4%	790	4.5%
<i>Jefferson</i>	107	2.8%	118	3.2%	119	3.4%	107	3.2%	103	3.3%	554	3.2%
<i>Morgan</i>	8	0.2%	6	0.2%	10	0.3%	11	0.3%	8	0.3%	43	0.2%
Other WV counties	16	0.4%	14	0.4%	14	0.4%	14	0.4%	12	0.4%	70	0.4%
MD	57	1.5%	51	1.4%	52	1.5%	49	1.5%	69	2.2%	278	1.6%
VA	22	0.6%	41	1.1%	37	1.1%	34	1.0%	27	0.9%	161	0.9%
PA	5	0.1%	7	0.2%	10	0.3%	4	0.1%	3	0.1%	29	0.2%
Other US states	5	0.1%	9	0.2%	6	0.2%	3	0.1%	7	0.2%	30	0.2%
International	1	0.0%	0	0.0%	1	0.0%	0	0.0%	2	0.1%	4	0.0%
Total	370	9.6%	407	11.0%	399	11.4%	386	11.6%	397	12.8%	1959	11.2%

	Total											
	Fall 2012		Fall 2013		Fall 2014		Fall 2015		Fall 2016		Total	
	N	%	N	%	N	%	N	%	N	%	N	%
Eastern Panhandle	2060	53.5%	1991	53.9%	1910	54.7%	1832	55.2%	1749	56.5%	9542	54.7%
<i>Berkeley</i>	1179	30.6%	1154	31.2%	1070	30.7%	1066	32.1%	1016	32.8%	5485	31.4%
<i>Jefferson</i>	782	20.3%	756	20.5%	752	21.6%	688	20.7%	654	21.1%	3632	20.8%
<i>Morgan</i>	99	2.6%	81	2.2%	88	2.5%	78	2.3%	79	2.6%	425	2.4%
Other WV counties	343	8.9%	311	8.4%	269	7.7%	265	8.0%	243	7.9%	1431	8.2%
MD	865	22.5%	821	22.2%	797	22.8%	767	23.1%	700	22.6%	3950	22.6%
VA	379	9.8%	374	10.1%	337	9.7%	297	8.9%	255	8.2%	1642	9.4%
PA	76	2.0%	77	2.1%	66	1.9%	65	2.0%	63	2.0%	347	2.0%
Other US states	113	2.9%	108	2.9%	95	2.7%	84	2.5%	73	2.4%	473	2.7%
International	16	0.4%	13	0.4%	15	0.4%	10	0.3%	11	0.4%	65	0.4%
Total	3852	100.0%	3695	100.0%	3489	100.0%	3320	100.0%	3094	100.0%	17450	100.0%

All percentages for each year are computed based upon the total students for each year. For example, for Fall 2016, the 1472 full-time students in the Eastern Panhandle are 47.6% of the total number of students in Fall 2016 (3094). Tables include undergraduate degree-seeking credit students only.

Table 25. ACT and ACT Equivalent Scores by Residency

	ACT or ACT Equivalent										Total	Mean
	16 or lower	17	18	19	20	21	22	23-25	26-30	31 or higher	N	
WV	76	101	116	127	151	167	167	386	226	24	1541	21.9
MD	19	49	51	58	57	37	48	103	46	6	474	21.2
VA	5	17	25	34	17	17	8	36	18	3	180	21.0
PA	1	2	8	3	5	8	2	12	6	1	48	21.7
Other US states	3	12	8	11	4	7	5	7	2	1	60	19.9
International	1	0	0	0	0	0	1	2	0	0	4	20.8
Total	105	181	208	233	234	236	231	546	298	35	2307	21.6

Note: Some students submitted both ACT and SAT scores at the time of admission. Students doing so chose one or the other as the preferred score type; only those scores are used for these tables. Some students submitted neither score.

Table 26. Class Level by Residency

	Freshmen		Sophomore		Junior		Senior		Unclassified		Total	
	N	Percent	N	Percent	N	Percent	N	Percent	N	Percent	N	Percent
Panhandle	446	14.4%	312	10.1%	413	13.3%	568	18.4%	10	0.3%	1749	56.5%
<i>Berkeley</i>	257	8.3%	183	5.9%	234	7.6%	335	10.8%	7	0.2%	1016	32.8%
<i>Jefferson</i>	169	5.5%	115	3.7%	155	5.0%	213	6.9%	2	0.1%	654	21.1%
<i>Morgan</i>	20	0.6%	14	0.5%	24	0.8%	20	0.6%	1	0.0%	79	2.6%
Other WV counties	82	2.7%	47	1.5%	53	1.7%	61	2.0%	0	0.0%	243	7.9%
MD	146	4.7%	123	4.0%	185	6.0%	243	7.9%	3	0.1%	700	22.6%
VA	71	2.3%	46	1.5%	55	1.8%	83	2.7%	0	0.0%	255	8.2%
PA	15	0.5%	16	0.5%	7	0.2%	25	0.8%	0	0.0%	63	2.0%
Other US states	27	0.9%	13	0.4%	13	0.4%	20	0.6%	0	0.0%	73	2.4%
International	1	0.0%	0	0.0%	4	0.1%	6	0.2%	0	0.0%	11	0.4%
Total	788	25.5%	557	18.0%	730	23.6%	1006	32.5%	13	0.4%	3094	100.0%

**Table 27. Retention of Fall 2015
Freshman Cohort by Residency**

	Freshmen	Returned	Percent
Eastern Panhandle	309	191	61.8%
<i>Berkeley</i>	192	116	60.4%
<i>Jefferson</i>	105	68	64.8%
<i>Morgan</i>	12	7	58.3%
Other WV counties	77	43	55.8%
MD	147	85	57.8%
VA	59	30	50.8%
PA	15	11	73.3%
Other US states	24	18	75.0%
International	0	0	N/A
Total	631	378	59.9%

Full-time first-time-in-college freshmen who enrolled in Fall 2015 and were still enrolled as of Fall 2016. Students who withdrew after enrolling this semester are included.

**Table 28. Graduation of Fall 2010
Freshman Cohort by Residency**

	Bacc. grads	Percent
Eastern Panhandle	168	47.9%
<i>Berkeley</i>	95	27.1%
<i>Jefferson</i>	63	17.9%
<i>Morgan</i>	10	2.8%
Other WV counties	43	12.3%
MD	83	23.6%
VA	34	9.7%
PA	10	2.8%
Other US states	13	3.7%
International	N/A	N/A
Total	351	100.0%

In Fall 2010, 759 entering full-time, first-time-in-college freshmen declared that they were seeking baccalaureate degrees. From this group, 351 students (46.2%) were awarded baccalaureate degrees by August 2016.

Table 29. Student Headcount by Registration Type

Type	Fall 2012		Fall 2013		Fall 2014		Fall 2015		Fall 2016		Change 2012-16	
	Head	Percent	Head	Percent	Head	Percent	Head	Percent	Head	Percent	N	Percent
Returning	2695	62.3%	2703	64.0%	2602	64.4%	2364	61.5%	2221	59.0%	-474	-17.6%
New Freshmen	756	17.5%	684	16.2%	642	15.9%	638	16.6%	564	15.0%	-192	-25.4%
Readmitted	48	1.1%	58	1.4%	43	1.1%	44	1.1%	51	1.4%	3	6.3%
Transient/Special	296	6.8%	334	7.9%	356	8.8%	361	9.4%	495	13.1%	199	67.2%
High School	22	0.5%	19	0.5%	13	0.3%	21	0.5%	15	0.4%	-7	-31.8%
Transfer	450	10.4%	355	8.4%	322	8.0%	370	9.6%	362	9.6%	-88	-19.6%
First Time Grad	59	1.4%	68	1.6%	63	1.6%	48	1.2%	58	1.5%	-1	-1.7%
Total	4326	100.0%	4221	100.0%	4041	100.0%	3846	100.0%	3766	100.0%	-560	-12.9%

Table 30. Student FTE by Registration Type

Registration Type	Fall 2012		Fall 2013		Fall 2014		Fall 2015		Fall 2016		Change 2012-16	
	FTE	Percent	FTE	Percent	FTE	Percent	Head	Percent	Head	Percent	N	Percent
Returning	2501	66.3%	2503	68.7%	2395	59.3%	2181	56.7%	2029	53.9%	-471	-18.8%
New Freshmen	748	19.8%	679	18.6%	639	15.8%	645	16.8%	566	15.0%	-181	-24.3%
Readmitted	34	0.9%	40	1.1%	30	0.7%	23	0.6%	33	0.9%	-1	-2.6%
Transient/Special	56	1.5%	64	1.8%	71	1.8%	73	1.9%	106	2.8%	50	90.3%
High School	5	0.1%	4	0.1%	3	0.1%	5	0.1%	3	0.1%	-2	-35.7%
Transfer	390	10.3%	307	8.4%	276	6.8%	313	8.1%	307	8.2%	-82	-21.1%
First Time Grad	41	1.1%	45	1.2%	44	1.1%	31	0.8%	39	1.0%	-2	-4.9%
Total	3774	100.0%	3642	100.0%	3458	85.6%	3270	85.0%	3084	81.9%	-689	-18.3%

Table 31. Student Headcount by Race and Ethnicity

Race / ethnicity	Fall 2012		Fall 2013		Fall 2014		Fall 2015		Fall 2016		Change 2012-16	
	Head	Percent	Head	Percent	Head	Percent	Head	Percent	Head	Percent	N	Percent
Hispanic	120	2.8%	112	2.7%	116	2.9%	107	2.8%	126	3.3%	6	5.0%
Am Ind/Alaskan	27	0.6%	23	0.5%	26	0.6%	21	0.5%	23	0.6%	-4	-14.8%
Black	303	7.0%	333	7.9%	324	8.0%	342	8.9%	306	8.1%	3	1.0%
White	3582	82.8%	3524	83.5%	3394	84.0%	3177	82.3%	3101	82.3%	-481	-13.4%
Asian	80	1.8%	84	2.0%	74	1.8%	94	2.4%	75	2.0%	-5	-6.3%
Nat HI / OPI	5	0.1%	6	0.1%	3	0.1%	3	0.1%	2	0.1%	-3	-60.0%
Two or more	9	0.2%	10	0.2%	35	0.9%	63	1.6%	68	1.8%	59	655.6%
Unknown	200	4.6%	129	3.1%	69	1.7%	54	1.4%	78	2.1%	-122	-61.0%
Total	4326	100.0%	4221	100.0%	4041	100.0%	3861	100.0%	3779	100.0%	-547	-12.6%

Sources for these tables are census date HEPC files.
Data are for credit students only.

Note. As of 2009-10, the new federal categories for race and ethnicity are in use.

Prior to 2009-10, the race / ethnicity classifications were mutually exclusive (only one could be selected). They were abbreviated as follows.

Black / Af. Amer: Black or African American

Amer. Ind. / Alaskan: American Indian / Native American or Alaskan

Asian / Pac. Isl.: Asian or Pacific Islander

Hispanic: Hispanic

White: White / Caucasian

Unknown / NR: Unknown or not reported

Beginning in 2009-10, the following changes were made.

Hispanic is a separate ethnicity designation, independent of the race categories.

The two categories **Asian** and **Native Hawaiian or other Pacific Islander** replace the single category **Asian / Pac. Isl.**

Two or more includes those students claiming two or more races. (More than one race category can be selected.)

Table 32. Shepherd University FTE by Department and Instructor

Dept	L_name	F_name	Faculty UG FTE	Student UG FTE	UG S/F Ratio	Faculty G FTE	Student G FTE	G S/F Ratio
0000	ALEXANDER	KEITH	.25	2.80	11.20	.	.	.
	BAKER	EVORA	.17	1.47	8.80	.	.	.
	BRASHER	SALLY	.25	2.80	11.20	.	.	.
	CANTRELL	MARK	.25	3.00	12.00	.	.	.
	COPNEY	CYNTHIA	.08	.87	10.40	.	.	.
	ELLZEY	MARY	.25	2.80	11.20	.	.	.
	GILKERSON	JONATHAN	.08	.93	11.20	.	.	.
	GROSS	EMILY	.08	.73	8.80	.	.	.
	KRANTZ	RACHEL	.08	.73	8.80	.	.	.
	LEADINGHAM	JEANETTE	.17	1.67	10.00	.	.	.
	MITCHELL	BELINDA	.25	1.40	5.60	.	.	.
	NIXON	TIMOTHY	.25	2.80	11.20	.	.	.
	NUREDINOSKI	YILDIZ	.08	.60	7.20	.	.	.
	ROCKWELL	GENA	.08	.73	8.80	.	.	.
	SANDY	JULIA	.25	3.00	12.00	.	.	.
	SANTANA	BRIAN	.08	.73	8.80	.	.	.
	SHAFFER	STEVEN	.08	.93	11.20	.	.	.
	SIEGRIST	REBECCA	.08	.67	8.00	.	.	.
	Subtotal dept		2.83	28.67		.	.	
ACCT	HAMOOD	ROGER	.75	12.80	15.60	.	.	.
	SLOUGH	JOHN	.25	1.40	5.60	.	.	.
	VANCE	CYNTHIA	.75	13.60	18.60	.	.	.
	WILLIAMS	DANIEL	1.25	19.80	15.60	.	.	.
	Subtotal dept		3.00	47.60		.	.	
BADM	ANDERSON	DOUGLAS25	1.50	6.00
	AYTAC	BERRIN50	3.75	7.50
	BARNETT	ANDRO25	.75	3.00
	BAXTER	BRANDY	.25	5.00	20.00	.	.	.
	CORPUS	KATHLEEN	1.25	15.60	12.48	.	.	.
	DAILEY	MICHAEL	.50	5.60	11.20	.25	.25	1.00
	DEMERRITT	GORDON	.75	8.00	10.67	.25	3.50	14.00
	DIXON	MICHAEL	.50	10.20	20.40	.	.	.

Fall 2014: SU FTEs by Department

Dept	L_name	F_name	Faculty UG FTE	Student UG FTE	UG S/F Ratio	Faculty G FTE	Student G FTE	G S/F Ratio
	DOBISH	HEIDI	.25	4.60	18.40	.	.	.
	EGRESS	AMY	.50	9.40	18.80	.	.	.
	FILES	MICHELLE25	3.75	15.00
	FLETCHER	ARNETTA	.58	10.87	18.63	.	.	.
	GALLIGAN	MARY	1.00	19.00	19.00	.	.	.
	GOCMEN	TUNCER50	7.75	15.50
	GROSS	DAVID	.75	18.80	25.07	.	.	.
	GROVES	MICHAEL25	.75	3.00
	HILLMAN	DONALD	.75	14.60	19.47	.	.	.
	ISHERWOOD	ALEX75	6.75	9.00
	KOSTAK	JOHN	.50	5.40	10.80	.	.	.
	LARSON	LINDSEY	.50	8.80	17.60	.	.	.
	LEGGETT	LANA25	4.00	16.00
	LEWIS	KAY	.25	2.40	9.60	.	.	.
	LOVEJOY	RALPH25	.50	2.00
	MARTZ	WILLIAM	.37	5.07	13.60	.25	3.75	15.00
	MILLER	JENNIFER	.75	13.20	16.17	.	.	.
	REID	KATHLEEN	.25	8.00	32.00	.	.	.
	SANDSTROM	DIRK81	4.25	5.23
	SCALES	CINDA	1.00	12.60	12.60	.	.	.
	SHAW	MARY25	1.25	5.00
	SHERWOOD	PATRICIA	.25	3.80	15.20	.	.	.
	TOUHIDI	BEHZAD	.25	8.00	32.00	.	.	.
	VANCE	CYNTHIA25	4.00	16.00
	YORK	JUDY	.25	3.80	15.20	.50	2.25	4.50
	ZIMMER	WILLIAM75	4.00	5.33
Subtotal dept			11.46	192.73		6.56	52.75	
BIOL	CONLEY	RUTH	1.00	14.93	14.93	.	.	.
	DEVER	RODNEY	.67	10.67	16.00	.	.	.
	GILKERSON	JONATHAN	1.00	16.53	16.00	.	.	.
	HENDRICKSON-LAM	SHER	1.00	14.93	13.20	.	.	.
	LESSER	MARK	1.00	19.73	19.73	.	.	.
	MCKENNA	KERRY	.33	5.87	17.60	.	.	.
	MENKE	JAY	1.00	29.00	29.00	.	.	.

Fall 2014: SU FTEs by Department

Dept	L_name	F_name	Faculty UG FTE	Student UG FTE	UG S/F Ratio	Faculty G FTE	Student G FTE	G S/F Ratio
	PENNOCK	DAVID	.67	10.67	16.00	.	.	.
	PLAUTZ	CAROL	1.00	13.87	13.60	.	.	.
	ROBERTSON	LAURA	1.00	16.27	16.27	.	.	.
	WARD	MARY	.67	11.47	17.20	.	.	.
	WING	DAVID	1.00	16.00	16.00	.	.	.
Subtotal dept			10.33	179.93		.	.	
CAT	BAER	MARJORIE	.75	14.00	18.67	.	.	.
	BENEFIEL	CHRISTIAN	1.00	4.60	7.07	.	.	.
	BOGGESS	EVAN	.50	5.60	11.20	.	.	.
	BRUNER	RICK	1.00	12.00	11.47	.	.	.
	COHEN-REISMAN	PAUL	.50	6.60	13.20	.	.	.
	COLTRIN	CHRISTOPHER	1.24	16.60	14.40	.	.	.
	CRAIG	JAMES	.75	20.20	26.93	.	.	.
	EVANISKO	SONYA	1.00	11.40	11.40	.25	.50	2.00
	FARMER	ROBERT	.48	5.20	10.80	.	.	.
	HERENDEEN	EDWARD	.75	2.20	2.40	.	.	.
	KAINEG	KRISTIN	1.00	10.60	11.87	.	.	.
	LEVITON	ADAM	.25	2.60	10.40	.	.	.
	MENDEZ	MICHAEL	.75	11.20	13.40	.	.	.
	MODLER	DAVID	.75	10.60	14.60	.	.	.
	NEVE	ERIN	1.00	10.40	10.40	.	.	.
	SMITH	RHONDA	.50	9.40	18.80	.25	.25	1.00
	WEBSTER	LAUREL	.25	2.00	8.00	.	.	.
Subtotal dept			12.47	155.20		.50	.75	
CHEM	BOZENKO	JOSEPH	.25	2.00	8.00	.	.	.
	COLE	JACQUELYN	1.00	19.47	19.47	.	.	.
	DILELLA	DAN	.84	12.27	16.38	.	.	.
	HASSLER	KYLE	1.25	21.80	17.44	.	.	.
	LI	MENGYANG	1.00	14.00	14.00	.	.	.
	MADER	JORDAN	1.00	16.47	16.47	.	.	.
	MARGEVICH	MAUREEN	.33	6.40	19.20	.	.	.
	WARBURTON	ROBERT	.75	17.07	22.60	.	.	.
Subtotal dept			6.42	109.47		.	.	
COMM	BLACK	THOMAS	.50	7.40	14.80	.	.	.

Fall 2014: SU FTEs by Department

Dept	L_name	F_name	Faculty UG FTE	Student UG FTE	UG S/F Ratio	Faculty G FTE	Student G FTE	G S/F Ratio
	FRIDGEN	PATRICIA	.50	7.60	15.20	.	.	.
	KUSHIN	MATTHEW	1.00	13.20	13.20	.	.	.
	LEVINE	MONICA	1.25	17.07	13.65	.	.	.
	MCGOUGH	MICHAEL	.50	6.40	12.80	.	.	.
	MCKAHAN	JASON	1.00	8.20	8.20	.	.	.
	MESSERLI	SHERRI	.75	12.00	16.00	.	.	.
	REILLY	CHERYL	.50	8.00	16.00	.	.	.
	WILLIAMS	KEVIN	1.00	9.80	9.80	.	.	.
Subtotal dept			7.00	89.67		.	.	
CSME	ADAMS	KAREN	1.25	15.53	11.07	.	.	.
	ADELS	JEFFREY	.57	10.13	17.86	.	.	.
	AYTAC	BERRIN	.50	12.20	24.40	.	.	.
	GHAHREMANI	MOHAMMADREZA	1.00	9.80	9.95	.	.	.
	GIL-ZAMBRANO	JOSE	.75	17.20	22.93	.	.	.
	GORNEFF	SERGE	.50	8.80	17.60	.	.	.
	GUZIDE	OSMAN	1.08	13.53	12.04	.	.	.
	LIAO	WEIDONG	1.17	17.20	14.74	.	.	.
	MARTIN	NICHOLAS	1.08	9.93	11.07	.	.	.
	MILLS	DONALD	1.33	16.27	10.96	.	.	.
	MIRDAMADI	REZA	.83	13.40	16.08	.	.	.
	MORTENSEN	YOONJA	.75	19.00	25.33	.	.	.
	PAGE	LAURA	.75	12.40	16.53	.	.	.
	RAY	GEORGE	.25	5.80	23.20	.	.	.
	RODRIGUEZ	PAUL	.25	3.20	12.80	.	.	.
	ROMANO	JAMES	1.00	15.60	16.80	.	.	.
	WANG	ZHIJUN	1.00	12.60	13.47	.	.	.
	WOJTOWICZ	RALPH	1.25	17.00	10.60	.	.	.
Subtotal dept			15.32	229.60		.	.	
ECFN	BROPLEH	RUDOLPH	.75	13.00	17.33	.	.	.
	GOCMEN	TUNCER	.75	9.60	12.80	.	.	.
	KINNEY	LINDA	1.00	17.00	16.13	.	.	.
	REID	KATHLEEN	.75	7.00	10.00	.	.	.
	SCHARMER	ROBERT	.50	7.40	14.80	.	.	.
	SCHULTZ	JOHN	1.00	18.40	18.13	.	.	.

Fall 2014: SU FTEs by Department

Dept	L_name	F_name	Faculty UG FTE	Student UG FTE	UG S/F Ratio	Faculty G FTE	Student G FTE	G S/F Ratio
	SWEENEY	CAROL	.25	3.60	14.40	.	.	.
	XIE	YUYING	1.00	18.00	18.00	.	.	.
Subtotal dept			6.00	94.00		.	.	
EDUC	ALLISON	ELVIRA25	2.50	10.00
	BAKER	HELEN	2.42	19.00	10.33	1.50	3.00	2.00
	BURKE	DAWNE	.75	10.20	13.60	.25	4.00	16.00
	COLE	TAUNA	1.00	11.20	11.20	.25	.50	2.00
	FONTANA	TERRESA	.86	4.13	4.78	.	.	.
	GEESAMAN	MARY	.25	.40	1.60	.	.	.
	HANNAH	CORNEILA	.67	6.40	10.40	.25	.75	3.00
	HARGROVE	DORI	1.00	11.67	11.67	.	.	.
	JOHNSON	LEANN	.25	2.80	11.20	.25	1.50	6.00
	KENNARD	DOUGLAS	.50	5.20	10.40	.	.	.
	MERCADO	REBECCA	.75	9.33	12.44	.	.	.
	MITCHELL	BELINDA	.75	8.60	11.47	.25	.25	1.00
	MODLER	DAVID	.25	.20	.80	.	.	.
	MORREALE	DIEDRE	.50	4.20	8.40	.	.	.
	PAULEY	JASON50	1.25	2.50
	PRICE	ANDREA	.50	6.60	13.20	.	.	.
	SHETLER	SANDRA	.25	2.80	11.20	.	.	.
	SPENCER	KARIN	.50	2.20	4.40	.	.	.
	SWARTZ	SUZANNE	.33	1.07	3.20	.	.	.
	TOOLE	GEORGIANN	.33	2.27	4.80	.75	3.50	4.67
	TUTTLE	JAMES	.50	2.60	5.20	.25	4.25	17.00
Subtotal dept			12.36	110.87		4.50	21.50	
ENGL	BARRETT	JOYCE	.75	8.80	9.80	.	.	.
	BERENSCHOT	DENIS	1.00	13.60	12.27	.	.	.
	BOSGRAAF	KAY	.50	7.00	14.00	.	.	.
	CANTRELL	MARK	.25	3.60	14.40	.	.	.
	ELLZEY	MARY	.25	2.20	8.80	.25	.25	1.00
	GIBSON	ALAN	.50	6.60	13.20	.	.	.
	GODELL	CHRISTOPHER	.75	8.40	11.20	.	.	.
	HANRAHAN	HEIDI	1.00	14.80	14.80	.	.	.
	HEALEY	ELIZABETH	.75	11.20	14.93	.	.	.

Fall 2014: SU FTEs by Department

Dept	L_name	F_name	Faculty UG FTE	Student UG FTE	UG S/F Ratio	Faculty G FTE	Student G FTE	G S/F Ratio
	KRANTZ	RACHEL	.96	10.00	8.67	.	.	.
	LAWRENSON	WILLIAM	.75	10.20	13.60	.	.	.
	LEWIN	JAMES	1.00	13.00	13.00	.	.	.
	MESSENGER	CARRIE	1.00	14.80	14.80	.	.	.
	NIXON	TIMOTHY	.75	11.80	15.00	.	.	.
	PACI	JAMIE	.25	1.80	7.20	.	.	.
	PATE	JAMES	.48	6.60	13.60	.	.	.
	SALFIA	JESSICA	.25	2.60	10.40	.	.	.
	SANTANA	BRIAN	1.25	18.20	14.56	.	.	.
	SHORR-PARKS	SADIE	.75	11.40	15.20	.	.	.
	SHURBUTT	SYLVIA	.75	5.80	7.40	.17	.17	1.00
	SNIDER	CARA	.75	6.20	8.27	.	.	.
	SUAREZ BUDENBEN	EVA-MARIA	1.00	12.20	10.80	.	.	.
	TUTTLE	JAMES	.08	.20	2.40	.	.	.
	WENGER	CHRISTY	.50	7.00	14.00	.	.	.
	WILLIAMS	HANNAH	.75	11.40	15.20	.	.	.
	WILSON	CHRISTOPHER	.75	10.80	14.40	.	.	.
Subtotal dept			17.78	230.20		.42	.42	
ENPS	BEST	JASON	1.00	16.80	16.80	.	.	.
	GROFF	JEFFREY	1.00	13.60	13.60	.	.	.
	MADISON	MARK	.25	2.80	11.20	.	.	.
	MATHEWS	CLARISSA	.67	11.07	16.60	.	.	.
	MURPHY	SYTIL	1.08	17.00	15.69	.	.	.
	SHAFFER	STEVEN	.67	10.93	16.40	.	.	.
	SNYDER	EDWARD	1.00	16.53	16.80	.	.	.
	VANCE	JOSHUA	.33	6.33	19.00	.	.	.
	VILA	PETER	1.00	13.07	13.07	.	.	.
	ZARLENGO	THERESE	.58	8.33	14.40	.	.	.
Subtotal dept			7.58	116.47		.	.	
HIST	ALEXANDER	KEITH	.50	4.20	8.40	.	.	.
	BANKHURST	BENJAMIN	1.07	18.87	18.96	.	.	.
	BRAGAW	CATHERINE	.25	1.80	7.20	.	.	.
	BRASHER	SALLY	.73	11.40	14.60	.	.	.
	BROOMALL	JAMES	.46	5.00	10.81	.	.	.

Fall 2014: SU FTEs by Department

Dept	L_name	F_name	Faculty UG FTE	Student UG FTE	UG S/F Ratio	Faculty G FTE	Student G FTE	G S/F Ratio
	DELGALLO	DINO	.75	17.40	23.20	.	.	.
	DEWITT	AMY	.25	3.00	12.00	.	.	.
	EDWARDS	PAMELA	.75	13.60	18.13	.	.	.
	GORDON	DAVID	.75	13.00	15.40	.	.	.
	MARJENHOFF	WILLIAM	.75	14.80	19.73	.	.	.
	MESSENGER	CARRIE	.25	1.60	6.40	.	.	.
	PATE	JAMES	.50	7.60	15.20	.	.	.
	PAULEY	DOREEN	.25	4.60	18.40	.	.	.
	POLLARD	ROBERT	.25	5.60	22.40	.	.	.
	SANDY	JULIA	.75	12.20	14.80	.	.	.
	UPWARD	ALEXANDER	1.25	19.20	14.40	.	.	.
	WILSON	CHRISTOPHER	.50	6.80	13.60	.	.	.
	WYATT	JAMES	.25	2.80	11.20	.	.	.
Subtotal dept			10.26	163.47		.	.	
HPER	ANDROZZI	JARED	1.25	10.80	9.60	.	.	.
	BARNETT	ANDRO	2.33	24.00	12.56	.	.	.
	BOSLEY	CASSIE	.75	9.47	14.67	.	.	.
	CATER	MONTE	.50	2.00	4.00	.	.	.
	CLUESMAN	JAMIE	.50	11.00	22.00	.	.	.
	CORRELL	JESSE	.25	3.20	12.80	.	.	.
	DEJARNETT	DANA	.25	2.00	8.00	.	.	.
	DOWNIE	LISA	.25	5.00	20.00	.	.	.
	EASTON	DANIELLE	.50	12.40	24.80	.	.	.
	ECKLEBERRY	JENNA	.25	2.13	8.53	.	.	.
	EICHELBERGER	DARRELL	.50	6.60	13.20	.	.	.
	FINCHAM	DAVID	.25	2.80	11.20	.	.	.
	GRAHAM	JESSICA	1.33	13.07	13.44	.	.	.
	HALL	MELISSA	1.75	16.00	11.20	.	.	.
	HOEKSTRA	ALEXANDER	.25	4.00	16.00	.	.	.
	HOVATTER	RHONDA	1.00	13.20	13.20	.	.	.
	KENDIG	STACEY	1.75	25.60	19.20	.	.	.
	KLINE	JOSHUA	.50	7.67	15.33	.	.	.
	LANE	SHATORA	.25	3.60	14.40	.	.	.
	LAWLESS	DESMOND	1.17	22.67	17.71	.	.	.

Fall 2014: SU FTEs by Department

Dept	L_name	F_name	Faculty UG FTE	Student UG FTE	UG S/F Ratio	Faculty G FTE	Student G FTE	G S/F Ratio
	LEWIS	BRYAN	.50	6.80	13.60	.	.	.
	LIVENGOOD	JENNIFER	.25	4.80	19.20	.	.	.
	LOPEZ	LESLIE	.50	7.60	15.20	.	.	.
	MCCOOK	ERNEST	.25	3.40	13.60	.	.	.
	MCNEILL	CHRISTOPHER	.50	9.00	18.00	.	.	.
	MILLER	MATTHEW	.25	2.40	9.60	.	.	.
	NAMOLIK	JUSTIN	.50	3.60	7.20	.	.	.
	NAU	KONRAD	.17	.13	.80	.	.	.
	OVERFELT	JEREMY	.50	3.73	7.47	.	.	.
	PLACE	GREGORY	2.25	24.60	12.60	.	.	.
	PULLEN	KYLE	.08	.73	8.80	.	.	.
	RULAND	WILLIAM	.08	.67	8.00	.	.	.
	SILVER	JOEL	.25	2.80	11.20	.	.	.
	SNYDER	GAIL	.25	.60	2.40	.	.	.
	TRACY	JULIA	.75	12.60	16.40	.	.	.
	WILHELM	MARY JO KELL	.50	5.20	10.40	.	.	.
	WILLAUER	TRACY	.75	13.20	17.60	.	.	.
	WOLF	KARL	.25	2.80	11.20	.	.	.
	WORRELL	KEITH	.42	8.40	19.00	.	.	.
Subtotal dept			24.58	310.27		.	.	
MUSC	ADAMS	KURTIS	1.17	8.00	6.70	.	.	.
	AUSTIN-STONE	HEATHER	.65	7.77	7.37	.	.	.
	CAMBREL	BRIAN	.24	1.30	5.38	.	.	.
	CAMERON	WAYNE	.24	1.43	5.20	.	.	.
	CARLSON	RACHEL	.67	6.27	9.40	.	.	.
	CARTER	DANIEL	.17	.40	2.40	.	.	.
	CONTE	NATALIE	.25	.67	2.20	.	.	.
	DROSINOS	DAVID	.25	1.67	5.60	.	.	.
	FEASLEY	WILLIAM	.67	2.83	3.37	.	.	.
	GONZOL	DAVID	.75	6.80	9.20	.	.	.
	HILL	LAWREN	.33	3.20	9.60	.	.	.
	HIPPENSTEEL	SCOTT	.73	9.87	13.87	.	.	.
	HUH	SAMMY	.14	.37	2.80	.	.	.
	KING	MARK	.08	.13	1.60	.	.	.

Fall 2014: SU FTEs by Department

Dept	L_name	F_name	Faculty UG FTE	Student UG FTE	UG S/F Ratio	Faculty G FTE	Student G FTE	G S/F Ratio
	KOCH	JEREMY	.33	.73	2.20	.	.	.
	LEAF	EDWARD	.17	.13	.80	.	.	.
	LIAO	YU-HSUAN	.83	4.57	3.40	.	.	.
	MOORE	BROOKE	.33	1.93	5.80	.	.	.
	MULLENAX	GARY	.25	1.67	5.60	.	.	.
	MUNRO	ANNE	.33	.80	2.40	.	.	.
	PACE	KEVIN	.61	1.00	1.64	.	.	.
	PALMER	DANE	.33	1.00	2.53	.	.	.
	PETZOLD-CARPENT	SUSAN	.67	6.73	10.10	.	.	.
	POLONCHAK	RICHARD	.25	1.60	6.40	.	.	.
	REGAN	MELANIE	.25	1.67	6.67	.	.	.
	RENNINGER	LAURA	.25	6.60	26.40	.	.	.
	SHAW	RONNIE	.15	.23	1.60	.	.	.
	SHOOK	GREGORY	.33	3.67	11.00	.	.	.
	TUDOR	ROBERT	.67	9.87	17.33	.	.	.
	WHITE	KAZIAH	.75	10.40	13.80	.	.	.
	WILDMAN	SIMON	.40	.63	1.31	.	.	.
Subtotal dept			13.22	103.93		.	.	
NURS	ALBRIGHT	CAROLYN	.50	13.07	26.13	.	.	.
	ANDERSON	CHARLOTTE	.67	4.27	6.40	.	.	.
	BURKEY	DORIS	.25	7.00	28.00	.58	6.33	10.86
	CLAYTON	LAURA	.42	10.67	25.60	.25	3.00	12.00
	COYLE	MARY	.92	20.20	22.04	.	.	.
	DUFFEY	TAMMY	.33	2.13	6.40	.	.	.
	GROVES	MICHAEL	.25	6.20	24.80	.25	3.00	12.00
	HANCOCK	MARY	.58	20.73	35.54	.	.	.
	HILL	ROBIN	.25	6.80	27.20	.	.	.
	KEMERER	BARBARA	.25	6.40	25.60	.	.	.
	KIRSCH	AMY	.33	2.13	6.40	.	.	.
	MAILEY	SHARON	.17	2.13	12.80	.	.	.
	MOTT	BARBARA	.58	21.33	36.57	.	.	.
	RINI	ELIZABETH	.75	27.80	37.07	.	.	.
	SPENCER	BARBARA	.17	4.93	29.60	.17	1.33	8.00
	WATSON HUFFER	KELLY	.50	12.00	24.00	.25	2.00	8.00

Fall 2014: SU FTEs by Department

Dept	L_name	F_name	Faculty UG FTE	Student UG FTE	UG S/F Ratio	Faculty G FTE	Student G FTE	G S/F Ratio
Subtotal dept			6.92	167.80		1.50	15.67	
PSCI	DELLIGATTI	ANTHONY	.25	5.40	21.60	.	.	.
	GUIRGUIS	MAGED	1.50	19.80	15.30	.	.	.
	HOLTSLAG	AREND	.75	10.00	12.80	.	.	.
	LILLIONYTE	VAIDA	.50	4.80	9.60	.	.	.
	ROBBINS	JOSEPH	.75	8.00	10.67	.	.	.
	SLOCUM-SCHAFFER	STEPHANIE	1.25	15.40	13.93	.	.	.
Subtotal dept			5.00	63.40		.	.	
PSYC	ADAMS	JOHN25	3.00	12.00
	BYERS	BARBARA	.50	8.60	17.20	.	.	.
	DAILY	LARRY	1.00	11.87	11.84	.	.	.
	DOBISH	HEIDI	.25	2.80	11.20	.	.	.
	GAVLAS	JOHN	.75	13.00	17.33	.	.	.
	GRANDE	STEVEN25	1.25	5.00
	LEVITAN	LINDSEY	1.50	16.47	9.33	.	.	.
	LOVELACE	CHRISTOPHER	.75	8.60	13.60	.	.	.
	MERZ	JOSEPH	1.00	19.60	19.60	.	.	.
	MILLS	MARSHA	.25	2.80	11.20	.	.	.
	MURTAGH	ANNE	1.25	16.20	13.40	.	.	.
	ROWE	KIMBERLY	.50	10.20	20.40	.	.	.
	SEIDMAN	RUTH	.75	13.00	16.80	.	.	.
	STEVENS	RICHARD75	8.00	10.67
	TOKACH	DEBRA	.75	15.80	21.80	.	.	.
	WENDLE	ANN25	3.50	14.00
Subtotal dept			9.25	138.93		1.50	15.75	
SOGE	ALEXANDER	KEITH	.25	2.00	8.00	.	.	.
	ANTHONY	ROBERT	1.00	13.00	13.00	.	.	.
	BERGMAN	ROLAND	.99	12.40	9.72	.	.	.
	COBIAN	CHRISTOPHER	.25	5.20	20.80	.	.	.
	DARBOE	MOMODOU	1.00	11.80	11.80	.	.	.
	DEWITT	AMY	1.00	14.20	14.20	.	.	.
	FARRIS	PATRICK	.75	11.20	16.20	.	.	.
	FLEMING	MONICA	.25	4.00	16.00	.	.	.
	HIXSON	DAVID	.25	4.80	19.20	.	.	.

Fall 2014: SU FTEs by Department

Dept	L_name	F_name	Faculty UG FTE	Student UG FTE	UG S/F Ratio	Faculty G FTE	Student G FTE	G S/F Ratio
	HOFE	C	.50	5.00	10.00	.	.	.
	HOWARD-BOSTIC	CHIQUITA	1.50	24.60	19.90	.	.	.
	LEGREID	ANN	.25	1.40	5.60	.	.	.
	LEROI	MARTHA	.75	12.80	16.60	.	.	.
	MARINO	EUGENE	.25	1.60	6.40	.	.	.
	PATTERSON	STEVEN	.75	16.20	21.80	.	.	.
	PHILLIPS	FRANCINE	.25	2.00	8.00	.	.	.
	SNYDER	RICHARD	.50	11.00	22.00	.	.	.
	SPEAKER	HOMER	.25	2.20	8.80	.	.	.
Subtotal dept			10.74	155.40		.	.	
SOWK	CLINE	CRAIG	.75	12.80	17.07	.	.	.
	CRAWLEY-WOODS	GERALDINE	.92	10.60	11.56	.	.	.
	FREELS	CHRISTINA	.25	5.00	20.00	.	.	.
	GREEN	KAREN	.75	9.67	12.15	.	.	.
Subtotal dept			2.67	38.07		.	.	
STRE	MCBRIDE	MELISSA	.50	5.47	10.93	.	.	.
	NUREDINOSKI	YILDIZ	.83	9.47	11.36	.	.	.
Subtotal dept			1.33	14.93		.	.	
STRM	BAILEY	WILLIAM	.33	5.73	17.20	.	.	.
	BANOR	MAXWELL	.83	13.60	16.47	.	.	.
	KELLY	ROBERT	.17	2.80	16.80	.	.	.
	NELLES	FRANCOISE	.50	8.67	17.33	.	.	.
	PRICE	VERONICA	.17	2.80	16.80	.	.	.
	WALKER	ANTHONY	.17	2.27	13.60	.	.	.
	WHEELER	MICHELLE	.33	5.87	17.60	.	.	.
Subtotal dept			2.49	41.73		.	.	
Grand Total			199.03	2782.33		14.98	106.83	