

# 2002-03 SC Basketball

## TABLE OF CONTENTS

Table of Contents/Quick Facts/Credits .....	1
Media Information .....	2
The Campus .....	3
The Coaches .....	4-6
The Administration .....	7
Preview/Support Staff .....	8-9
2002-03 Roster Information/Team Photo .....	9
The Players .....	10-21
2001-02 Statistics/Results .....	22
2001-02 WVIAC Information/Standings .....	23
The Opponents .....	24-28
History & Records .....	28-36
Yearly Leaders/Miscellaneous Statistics .....	31
All-Time Results .....	32-35
All-Time Roster .....	36
Schedule .....	OBC



"It's More than a Game..." This year's theme as defined by the players:

### IT'S MORE THAN A GAME

\ĩt's mŃr thán ā gāme\ : wbb (2002-2003)

1 : it's a way of life, it's is what drives you to wake up before daylight to run, it's what sends you to the weight room on Friday nights instead of to a party (CL) 2 : coming together as a team and feeding off each other's intensity and hunger to win (LF) 3 : systematic, logical method to reinforce strategic and options in the game of life (CMA) 4 : it's about relationships (AO) 5 : learning to work with others (LM) 6 : its everything behind the scenes (DM) 7 : combination of practice, hard work, teamwork, attitude, coachability (LS) 8 : sacrificing yourself to become a better basketball player (CK) 9 : not wasting yours or others time and effort, it is a job (CMu) 10 : pre-season, post-season, off season – getting things done in the classroom (G"N"R) 11 : time, effort, emotions, teamwork, teammates (Av) 12 : it's an attitude (AC) 13 : it's our lives (LM) 14 : sacrificing your body, time, and all that you are in order to succeed and reach another level in competition (BH)

## QUICK FACTS

HEAD COACH JODIE RUNNER

Office Phone \_\_\_\_\_ 304/876-5170

Best time to reach Coach Runner \_\_\_\_\_ Mornings

Runner's career record \_\_\_\_\_ First Year

Years and record at SC \_\_\_\_\_ Same

ASSISTANT COACH

Melanie Ford \_\_\_\_\_ First season

## 2002-03 BASKETBALL FACTS

Team Captains \_\_\_ Brianne Hamilton, LaShay Makal, Cassie Murray

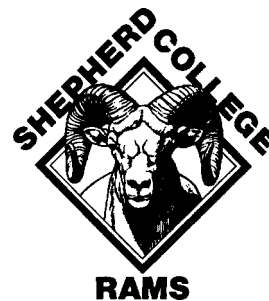
2001-02 Record (WVIAC Record) \_\_\_\_\_ 19-9 (13-5)

Starters Returning/Lost \_\_\_\_\_ 4/1

Letterwinners Returning/Lost \_\_\_\_\_ 9/4

Home Arena \_\_\_\_\_ Butcher Athletic Center (3,000)

Year Opened \_\_\_\_\_ 1989



**Credits:** The 2002-03 Shepherd College Women's Basketball Guide is a publication of the Shepherd College Sports Information Office. Special thanks to Valerie Owens and Timothy D. Haines of the Office of External Affairs Office for their invaluable time and assistance.

Editor \_\_\_\_\_ Chip Ransom

Photography \_\_\_\_\_ Gary Kable, TLC Photography- 304-876-6445

# MEDIA INFORMATION

## TO THE MEDIA

The 2002-03 Shepherd College basketball media guide is designed as an aid to assist the media in covering Ram basketball this season. If you have any other questions or requests, please contact the Shepherd Sports Information Office at (304)876-5228.

## INTERVIEW POLICY

All interviews should be arranged through the Shepherd College Sports Information Office (304-876-5228).

## SHEPHERD ATHLETICS DIRECTORY (AREA CODE 304)

### ATHLETIC ADMINISTRATION

Monte Cater, Director of Athletics, 876-5264  
Joan Pope, Assistant Director of Athletics, 876-5140  
Ken Tyler, Assistant Director of Athletics, 876-5264

### BASKETBALL OFFICE

Jodie Runner, Head Coach, 876-5170  
Melanie Ford, Assistant Coach, 876-5029

### SPORTS INFORMATION

Chip Ransom, Sports Information Director  
**Office:** 876-5228  
**Home:** 876-3243  
**Fax:** 876-3267  
**E-Mail:** cransom@shepherd.edu

### SHEPHERD COLLEGE ATHLETIC SECRETARY

Kathy Fasulo, 876-5481

## SHEPHERD COLLEGE - A QUICK LOOK

**Founded:** 1871  
**Enrollment:** 4,400  
**Location:** Shepherdstown, WV  
**President:** Dr. David L. Dunlop  
**Director of Athletics:** Monte Cater  
**Affiliation:** Higher Education Policy Commission  
**Athletic Affiliations:** NCAA II, WVIAC  
**Basketball Facility:** Butcher Athletic Center  
**Nickname:** Rams  
**Colors:** Blue & Gold



## INFORMATION SOURCES

**Shepherd College Website:** [www.shepherd.edu](http://www.shepherd.edu)  
**NCAA II Website:** [www.siu.edu/ATHLETIC/d2/](http://www.siu.edu/ATHLETIC/d2/)

## ON THE BEAT...



BUTCHER ATHLETIC CENTER

### Print Media

#### **The Journal**

207 West King Street  
Martinsburg, WV 25401  
304/263-3381 (phone)  
(Ext 116, 131, or 132)  
304/267-2903 (fax)  
Rick Kozlowski (Sports Editor)

#### **Hagerstown Morning Herald**

100 Summit Avenue  
Hagerstown, MD 21740  
800/626-6397 (ext. 2310 -- ph.)  
301/714-0245 (fax)  
Mark Keller (Sports Editor)

#### **The Spirit of Jefferson Advocate**

P.O. Box 231  
Charles Town, WV 25414  
304/725-2046 (phone)  
304/728-6856 (fax)  
Bob Madison (Sports Editor)

#### **The Winchester Star**

2 North Kent Street  
Winchester, VA 22601  
540/667-3200 (phone)  
540/667-0012 (fax)  
Ben Brooks (Sports Editor)

#### **The Northern Virginia Daily**

120 Holiday Street  
Strasburg, VA 22657  
540/465-5137 (phone)  
540/465-6163 (fax)  
Sports Editor

#### **Shepherdstown Chronicle**

P.O. Box 2088  
Shepherdstown, WV 25443  
304/876-3380 (phone)  
304/876-1957 (fax)  
Editor

### Radio

#### **WRNR-AM 740**

P.O. Box 709  
Martinsburg, WV 25401  
304/263-6586 (phone)  
304/263-3082 (fax)  
Matt Miller (Sports Director)

### Television

#### **WHAG-TV 23**

13 E. Washington St.  
Hagerstown, MD 21740  
301/797-4408 (phone)  
301/745-4093 (fax)  
Steve Jamieson, Sports

### Wire Services

#### **Associated Press**

P.O. Box 1713  
Charleston, WV 25326  
800/642-8291 (phone)  
304/345-5282 (fax)  
John Raby (Sports Editor)

# THE CAMPUS

Shepherd College is a state-supported institution within the West Virginia system of higher education. From its beginnings over a century ago, the College has evolved into a comprehensive center of higher learning, serving a number of related, yet distinct roles:

- The College offers Bachelor of Arts, Bachelor of Fine Arts, Regents Bachelor of Arts, and Bachelor of Science degrees in a wide range of fields, encompassing the liberal arts, business administration, teacher education, the social and natural sciences, and other career-oriented areas.
- The Community and Technical College of Shepherd offers a diverse selection of programs leading to associate's degrees.
- The College provides credit courses for individuals with no degree aspirations, but who seek to broaden and update their knowledge in either familiar or new fields of intellectual endeavor.
- For the northern Shenandoah Valley region as a whole, the College is a center for non-credit continuing education, public service, and convenient citizen access to extensive programs in art, music, athletics, and other areas of public interest

## THE HISTORY OF SHEPHERD COLLEGE

Shepherd College began when the county seat of Jefferson County, WV, was moved from Shepherdstown to Charles Town in July 1871. The people of Shepherdstown and the vicinity decided to use the vacated courthouse for educational purposes. An article of incorporation for a school to be known as Shepherd College, designed to instruct students in "languages, arts and sciences," was drawn up and signed by C.W. Andrews, A.R. Boteler, C.T. Butler, G.M. Beltzhoover, David Billmyer, Samuel Knott, and Henry Shepherd.

This body of incorporators gave itself power to elect instructors, pay salaries and prescribe courses of study. Professor Joseph McMurran was appointed first principal of the institution, which opened with 42 students in September 1871, under the authority of the Board of Trustees.

On Feb. 27, 1872, the Legislature of West Virginia passed the following act: "That a branch of the State Normal School be and the same is hereby established at the building known as Shepherd College, in Shepherdstown, in the county of Jefferson."

Shepherd College became a four-year college for the training of teachers on July 1, 1930, at which time the institution began granting the Bachelor of Arts degree. Shepherd was authorized to implement liberal arts programs in 1943, and in 1950, the Bachelor of Science degree was added.

Also in 1950, Shepherd was accredited by the North Central Association of Colleges and Secondary Schools, and in 1951, it became a member of the Association of American Colleges. Accreditation was received from the National Council for the Accreditation of Teacher Education in 1954.

In recent years, other programs, including social welfare, music, and nursing, have been accredited, with all of the College's programs having their accreditation renewed regularly.

In the past two decades, Shepherd has experienced a 200 percent enrollment growth and added 11 new buildings, including the \$9 million Robert C. Byrd Science and Technology Center.



## SCENIC AND HISTORIC LOCATION

Shepherd College is situated in the Shenandoah Valley, on the banks of the Potomac River, in historic Shepherdstown. The oldest town in the state, Shepherdstown is a quaint college community, with the town and campus combining to offer a unique learning-living environment.

Located in the Eastern Panhandle of West Virginia, Shepherdstown is within one mile of nearby Maryland and 20 miles of nearby Pennsylvania and Virginia. It is only 65 miles from Washington, D.C., and Baltimore, MD.

Within a short drive from the campus are such well-known historic landmarks as Harpers Ferry and the Antietam Battlefield.

Across the Potomac River from the campus is the Chesapeake and Ohio Canal National Historical Park. The C & O Canal Historical Trail, developed along the towpath of the old canal, is a beautiful recreational sanctuary, extending 180 miles.

## ABOUT SHEPHERD COLLEGE

Shepherd's 4,400 students have the choice of more than 70 programs of study including bachelor's degree programs and pre-professional studies through the College and two-year associate degrees through Shepherd's Community and Technical College component.

Shepherd College is also the home of the George Tyler Moore Center for the Study of the Civil War and the Contemporary American Theater Festival, which features new and emerging playwrights.

# JODIE RUNNER

## HEAD COACH

Jodie Runner has given the Shepherd College women's basketball five years of dedication as an assistant and plans on extending that effort to an even higher level of commitment as the program's head coach. She brings out great enthusiasm and pride in both the girls and the program as a whole.

*"These girls and this program are my passion, I've recruited them and spent the majority of my time with them. There is nothing more in this world that I would rather do than to try and help them reach their potential as a person and a player. To see the smiles on their faces when they finally succeed in something is priceless."*

### On the Court

A change in command leads to changes in the style of coaching and the approach to the game. On the court the Shepherd women's basketball team has been noted for its defense and unmatched intensity. After successfully ending the year as one of the best defensive teams in the WVIAC, Runner has placed a challenge on her girls to excel to an even higher level of defense. Defense is about one's desire to dominate your opponent. Both the team and staff take pride in their defense and believe it will again be the strength for the program. Offensively the Rams will be challenged as well. A new philosophy has been added to the team's offense. Runner is opening up great opportunities for her team to use their individual skills. She has incorporated a motion-like offense which will allow the players to adapt more to defensive changes and contribute to each other's success.

*"In essence, we are looking to turn up our defense and cut our offense loose a little bit. When our girls have the frame of mind where they are challenged each time on the defensive end to dominate and get a stop and then be relaxed on offense, I think we will be hard to beat."*

### Off the Court

Runner strives to provide the learning atmosphere that emphasizes classroom dedication and individual commitment to one's collegiate success. With close monitoring of her student-athletes in the classroom, continued success is expected.

*"I have always told them that if they can't get it done in the classroom, they don't deserve to be on the court."*

### Behind the Scenes

The SC women's basketball team feels deeply about continuing their relationship with the surrounding community. The Rams enjoy returning support to those who have backed them throughout the years. After creating the Shepherd College Women's Basketball Hoop Troop for the community kids, Runner has also strived to get her team involved with volunteering and other involvement in community projects.

*"Our girls love giving back by working with people, especially children. In return they learn how important it is to be a good role model on and off the court when so many little eyes are watching them."*



# MELANIE FORD

## ASSISTANT COACH

Melanie Ford enters her first year as the program's new assistant coach.

Ford comes to Shepherd from Wheeling Jesuit where she served as a graduate assistant while completing her master's degree in business administration.

Prior to coach at Wheeling, Ford was a four-year letterwinner at the University of Charleston (1996-2000) where she earned First Team All-Conference honors as a junior and served as team captain as a senior. Ford helped lead the Golden Eagles to the WVIAC Tournament Championship in 1998-99. She also set several scoring records at UC.

Ford brings a wealth of basketball knowledge that began in Galveston, IN, where her father was her high school coach. In addition to her playing and coaching experience, Ford has had the opportunity to work several prestigious camps, including camps at Tennessee, Purdue, and Duke Universities.

At Shepherd she will be involved in every aspect of the program and solely responsible for many of them. After successfully directing preseason conditioning, the Rams are ready for another season of wearing down their opponents.

On the court Ford will be working with the guards and lending a hand on both offense and defense. Off the court she will serve as the recruiting coordinator and will also be responsible for travel, scouting, compliance, and various other duties. Ford also teaches classes at Shepherd.

*"We are very lucky to have Melanie with us. She's a perfect fit here at Shepherd. She has adapted with ease, due to her extensive experience in the WVIAC. With similar coaching philosophies, she has earned the trust the girls almost instantly. She will play a major role in any an all of our success in the seasons to come." • Coach Runner*



## THE COACHES

# BARB OLLER

## STUDENT ASSISTANT COACH

Joining the Ram basketball staff this year as a student assistant is Barb Oller.

Oller, a standout point guard for Shepherd for the last four years, returns to the team in a coaching capacity as she finishes her degree in education.

Oller will assist at all practices and home games and will help coordinate alumni relations. She will also be involved with Shepherd's Hoop Troop, a program for the kids in the community.

*"I am very glad that Barb decided to help us out this year. Due to her background as a former player here, she's able to give even more extensive insight."* • Coach Runner



# BILL SHIRLEY

## EQUIPMENT MANAGER

Entering his second year with the women's basketball program is Bill Shirley.

Shirley is responsible for practice and game-day preparation. He handles all the equipment and filming responsibilities for the Rams. In addition, he assists with the Hoop Troop program and is an invaluable asset to the program.

*"Billy is the guy behind the scenes that makes everything run smoothly. He is one of the most dependable people I know."* • Coach Runner



## THE ADMINISTRATION



# DR. DAVID L. DUNLOP

## PRESIDENT

David L. Dunlop became president of Shepherd College in 1996. Prior to that time, he had spent many years developing his leadership skills through a variety of academic and administrative roles. Dr. Dunlop served as the chief academic officer at the University of Pittsburgh at Johnstown (UPJ) for seven years and as interim president there for one year. He had risen through the ranks at UPJ, starting in 1973 as a department chair, moving up to division chair, and then dean, before becoming vice president for academic affairs in 1989.

Dr. Dunlop earned a B.S. in secondary education in biology and physical science at The Pennsylvania State University in 1965. He obtained an M.Ed., also from Penn State, in 1966, in biological sciences education. Dr. Dunlop earned his Ph.D. in science education at the University of Pittsburgh.

As Dr. Dunlop progressed in his career, he was selected to participate in several academies and institutes, most notably the Institute for Educational Management at Harvard University.

Dr. Dunlop has had two books published as well as numerous articles which have appeared in national scholarly journals. He has made many presentations at state and national meetings, mostly related to computer and technology issues. He has extensive experience teaching at both the high school and college levels and has written many successful grants.

Dr. Dunlop participates in several civic organizations. He serves on the board of directors of BB&T; he is a member of the Shepherdstown Rotary, and he has served on the West Virginia International Trade Development Council.



# MONTE CATER

## DIRECTOR OF ATHLETICS

Now in his 10th year as athletic director is Monte Cater, a 1971 graduate of Millikin University. Cater was appointed the College's director of athletics on February 5, 1993 and has served as the school's football coach since 1987.

Cater oversees the operation and administration of Shepherd's 13-sport NCAA Division II athletic program, while maintaining one of the top football programs in the WVIAC.

Cater wasted little time establishing himself as a winner at Shepherd as he led the Rams to a tie for the WVIAC title in 1988. A 6-3-1 record in 1990 earned the Rams a second-place finish in the WVIAC and served as a prelude to a two-year run of domination through the conference. Cater guided the 1991 team to an 8-3 record and the school's first NAIA Playoff appearance since 1986. Although the Rams fell in the first round of the playoffs, they had established themselves as the team to beat in the WVIAC and finished the season ranked sixth nationally.

The 1992 season proved to be one of Cater's best as head coach of the Rams as Shepherd compiled a 9-3 overall record, which included their second straight 7-0 mark in the WVIAC.

Cater led the Rams to one of their best seasons ever in 1997 with a 9-1 mark and a share of the WVIAC crown. Shepherd set numerous school records en route to its most exciting season since the undefeated team of 1955. In 1998, Cater led the Rams to a 10-2 mark and their first-ever trip to the NCAA II Playoffs. Shepherd upset Indiana (PA), 9-6, in the first round of the playoffs. He led the Rams back to the NCAA II Playoffs with in 1999 with a 9-2 mark.

Cater has been tabbed the WVIAC Coach of the Year five times (1991, 1992, 1997, 1998, 1999). Cater recently became the all-time winningest coach in SC football history. With Shepherd's 35-21 win over Glenville this year, he passed Walter Barr (104-48-4) with his 105th win at Shepherd.

Prior to coming to Shepherd, Cater was the primary architect in reviving the Lakeland College program in Sheboygan, WI. In six seasons as the head coach at Lakeland Cater transformed the program into a winner, as the team won three conference titles in his last three seasons, while he was named Coach of the Year twice.

Cater, a member of the AFCA Board of Coaches, which conducts the NCAA II Football Poll, and chair of the WVIAC Athletic Directors, earned his B.A. in physical education from Millikin in 1971, before moving to SIU-Carbondale, where he earned his master's in physical education as well.

Cater and his wife, Bonnie, reside in nearby Martinsburg, with their daughter, Taylor, and son, Logan.

## SUPPORT STAFF



JOAN POPE  
ASSISTANT AD



KEN TYLER  
ASSISTANT AD



CHIP RANSOM  
SPORTS  
INFORMATION  
DIRECTOR



GAYLE CONNER  
TRAINER



SUE BOHRER  
ASSISTANT  
TRAINER



PETE YURISH  
STRENGTH &  
CONDITIONING

A special thanks to athletic secretary Kathy Fasulo for her invaluable time and assistance.

### Season Preview

**Jodie Runner**, top assistant coach at Shepherd for the past five seasons, takes over as head women's basketball coach for the Rams. A solid core of veterans and a talented group of newcomers should help the Rams challenge for the conference title again this season.

Shepherd will be led by junior guard **Cassie Murray** and senior forward **Brianne Hamilton**. Murray, a two-time First Team All-Conference selection, averaged 11.6 points and 6.2 rebounds for the Rams last year, while Hamilton added a 7.0 scoring average and was a force on the boards with an 8.0 rebounding average.

The starting guard tandem of juniors **Ashana Cowans** (8.4 ppg) and **Ashley van Norden** (5.0 ppg) returns to lead the Rams in the backcourt.

Other key returnees include sophomore guards **Carrie Kunkel** (5.2 ppg) and **Lindsay Stewart** (1.5 ppg), junior guard/forward **Gaynell Reese** (3.7 ppg), and sophomore forward **Danielle Murray** (2.1 ppg). **Valerie Chaney**, a 6-foot-3 junior forward/center, returns to the team after missing last season to concentrate on playing volleyball for the Rams. **LaShay Makal**, a transfer from George Mason, expects to make a significant contribution for the Rams this year after battling injuries last year. Makal has also been chosen as a team captain.

Newcomers include freshmen **Carolyn Malachi**, **LaToya Fisher**, and **Casey Landrum**, and sophomore **Lena Moore**, a transfer from North Carolina A&T. All could make an immediate impact.

Shepherd will again have a tough non-conference schedule facing such challenging Division II opponents as Gannon, Shippensburg, and West Chester. The Rams face one of the most difficult regional schedules in the conference. Only two opponents (Mt. Aloysius, Marshall University) are not in the East Region.

# PREVIEW



**Front Row (L-R):** Casey Landrum, Gaynell Reese, LaShay Makal, Cassie Murray, Carrie Kunkel. **Middle Row (L-R):** Ashley van Norden, Lindsay Stewart, Student Assistant Barb Oller, Assistant Coach Melanie Ford, Head Coach Jodie Runner, Student Assistant Billy Shirley, Ashana Cowans, Amy Oliva. **Back Row (L-R):** Carolyn Malachi, Brianne Hamilton, Valerie Chaney, LaToya Fisher, Danielle Murray, Lena Moore.

## NUMERICAL ROSTER

<u>No.</u>	<u>Name</u>	<u>Pos.</u>	<u>Yr.</u>	<u>Ht.</u>	<u>High School (Prev. Coll.)/Hometown</u>
11	Ashley van Norden	G	Jr.	5-5	Williamsport/Hagerstown, MD
12	Carolyn Malachi	F-C	Fr.	5-11	Upper Marlboro, MD/ Eliazbeth Seton
13	Carrie Kunkel	G	So.	5-8	Gettysburg/Gettysburg, PA
20	Cassie Murray	G	Jr.	5-10	Allegany/Cumberland, MD
21	Gaynell Reese	G	Jr.	5-8	Bedford/Maple Heights, OH
22	Lindsay Stewart	G	So.	5-6	Hampshire/Romney, WV
23	Brianne Hamilton	F	Sr.	6-0	St. Maria Goretti/Martinsburg, WV
24	LaShay Makal	G	Jr.	5-8	Suitland/Forestville, MD
25	Ashana Cowans	G	Jr.	5-5	Robinson/Fairfax, VA
32	LaToya Fisher	F-C	Fr.	6-0	Seneca Valley/Germantown, MD
33	Casey Landrum	F	Fr.	5-11	Tabb/Yorktown, VA
34	Lena Moore	F-C	So.	5-10	Newport School (NC A&T)/Washington, DC
42	Valerie Chaney	F-C	Jr.	6-3	Frankfort (Georgia Tech)/Fort Ashby, WV
50	Danielle Murray	F	Fr.	5-11	Martinsburg/Martinsburg, WV
	*Amy Oliva	G	Jr.	5-2	Waukegan (Wheeling Jesuit)/Waukegan, IL

\*Transfer will become eligible for 2003-04 season

**Head Coach:** Jodie Runner (1st year)

**Assistant Coach:** Melanie Ford (1st year)

**Student Assistant Coaches:** Barb Oller, Billy Shirley

**Captains:** Brianne Hamilton, LaShay Makal, Cassie Murray

# RETURNERS

# BRIANNE HAMILTON

6-0 • SENIOR • FORWARD  
MARTINSBURG, WV • MARTINSBURG HS



Senior captain who is expected to lead the team... tremendous leader by example... smart decision maker... post player who possesses great strength and excellent vision on the court.

#### At SC 2001-02

Team captain... led team in rebounding with an 8.03 average... fourth on team in scoring with a 7.2 average... Tied for team-lead in steals with Ashana Cowans (41)... grabbed a career-high 16 rebounds against West Virginia Wesleyan... also scored a career-high 16 points in that game... added two more double-doubles on the year ...had a career-high three blocks against Alderson-Broadus... named a 2002 All-American Athlete by the National Strength and Conditioning Association (NSCA).

#### 2000-01

Averaged 4.1 points and 3.7 rebounds... led team in rebounding on four occasions... scored team and season-high 11 points against Bloomsburg... grabbed the career-high 12 rebounds against Glenville.

#### 1999-00

Averaged 4.1 points and 1.7 rebounds... scored a then career-high 15 points against Columbia Union.

#### High School

Standout at Goretti High School... lettered in basketball, track and field, and cross country... earned All-State honors in basketball and track... earned Tournament MVP basketball honors.

#### Personal

Brianne Janelle Hamilton... born October 8, 1980... daughter of Bryan and Sandy Hamilton... has sister (Mendi-24) and brother (Brannon-16)... majoring in secondary education/health.

HAMILTON'S CAREER STATISTICS

Year	GP/GS	FG-A	FG %	3FG-A	3FG %	FT-A	FT %	Pts.	Avg.	RB-Avg.	PF/D	A	TO	B	S	Min.
1999-00	21/0	26-61	.426	0-0	.000	33-53	.623	85	4.1	35-1.7	33/0	7	27	1	20	213
2000-01	25/0	31-80	.387	0-1	.000	40-71	.563	102	4.1	93-3.7	33/0	13	32	4	13	285
2001-02	27/26	69-163	.423	0-1	.000	56-118	.475	194	7.2	123-8.0	60/0	39	50	9	41	717
<b>Totals</b>	<b>73/26</b>	<b>126-304</b>	<b>.414</b>	<b>0-2</b>	<b>.000</b>	<b>129-242</b>	<b>.533</b>	<b>381</b>	<b>5.2</b>	<b>251-3.4</b>	<b>126/0</b>	<b>59</b>	<b>109</b>	<b>14</b>	<b>74</b>	<b>1215</b>

# ASHANA COWANS



5-5 • JUNIOR • GUARD  
FAIRFAX, VA • ROBINSON HS



Guard who has the speed to beat any opponent off the dribble... can also pull up for the quick jumper.

**At SC**  
**2001-02**

Third on the team in scoring with an 8.4 average... scored a career-high 17 points on a 6-of-10 shooting performance against Bluefield State... grabbed a career-high eight rebounds against Glenville... recorded a season-high four steals against Ohio Valley.

**2000-01**

Averaged 6.0 points and 2.2 rebounds... led team in scoring on two occasions... second on team in three-pointers with 15... fourth on team in steals with 33... had career-high seven assists against Columbia Union... scored then career-high 16 points against Ohio Valley.

**High School**

Standout in basketball at Robinson High School... two-year co-captain... member of District and Regional Championship teams... earned All-District and All Region honors.

**Personal**

Ashana Nicole Cowans... born August 6, 1981... daughter of Steve and Sylvia Cowans... has sisters (Inez-30, Daresa-31 ) and brothers (Mark-32, Stephen-22)... majoring in mass communications.

COWANS' CAREER STATISTICS

Year	GP/GS	FG-A	FG %	3FG-A	3FG %	FT-A	FT %	Pts.	Avg.	RB-Avg.	PF/D	A	TO	B	S	Min.
2000-01	26/5	59-197	.299	15-47	.319	23-40	.575	156	6.0	56-2.2	64/1	28	51	0	33	452
2001-02	28/26	88-240	.367	13-53	.245	46-69	.667	235	8.4	68-2.4	59/1	29	55	7	41	595
<b>Totals</b>	<b>54/31</b>	<b>147-437</b>	<b>.336</b>	<b>28-100</b>	<b>.280</b>	<b>69-109</b>	<b>.633</b>	<b>391</b>	<b>7.2</b>	<b>124/2.3</b>	<b>123/2</b>	<b>57</b>	<b>106</b>	<b>7</b>	<b>74</b>	<b>1047</b>

## RETURNERS

# LASHAY MAKAL

5-8 • JUNIOR • GUARD  
FORESTVILLE, MD • SUITLAND HS

24



**Team captain... quiet leader... fearless at taking the ball to the hole... has great shooting range.**

#### **At SC** 2001-02

Sat out season with a knee injury.

#### **2000-01**

Transferred to Shepherd in January 2001.

#### **Prior to Shepherd**

##### **1998-99**

Played at George Mason University... scored a career-high six points against UNC-Wilmington.

#### **High School**

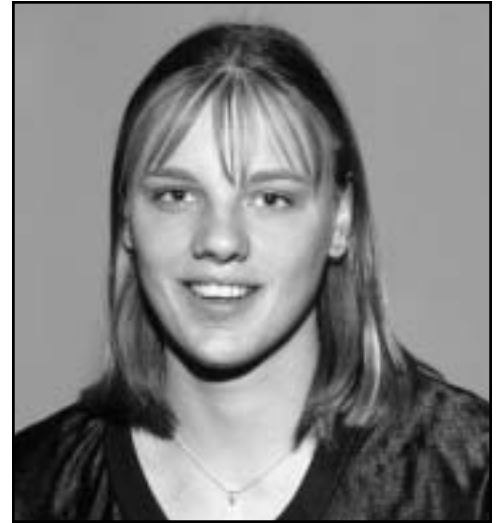
Standout at Suitland High School... was a Third Team All-Met selection by the *Washington Post*... hit game-winning shot that led Suitland to the state championship... named Team MVP.

#### **Personal**

LaShay Navar Makal... born August 28, 1980... daughter of James Makal and Yvonca Deale... has sisters (Ashley Makal-15, Janee Deale-14) and brother (James Deale-17)... majoring in recreation/leisure studies with a concentration in commercial tourism.

# RETURNERS

# CASSIE MURRAY



5-10 • JUNIOR • GUARD  
CUMBERLAND, MD • ALLEGANY HS



Team captain...natural leader... can shoot off the pass or dribble from any range... versatile player who can play at any spot on the court.

### At SC 2001-02

First Team WVIAC All-Conference choice... led Rams in scoring with an 11.6 average... also topped team in blocked shots (29) and three-pointers (28)... scored a season-high 25 points against Wheeling Jesuit... led team in scoring on 10 occasions... grabbed a career-high 14 rebounds against West Virginia Wesleyan... had three double-doubles on the year, including a 21-point, 11-rebound effort against Davis & Elkins.

### 2000-01

First Team WVIAC All-Conference and All-Freshman choice... led Rams in scoring (13.7 ppg), rebounding (6.0 rpg), and steals (45)...371 points were second most by a Ram freshman... set school single-season mark with 41 three-pointers...led team in scoring on 16 occasions... member of 2001 Planet Basketball team.

### High School

Standout at Allegany High School... a four-year starter in volleyball, basketball, and softball... helped team to state championships in basketball and softball... had 1,192 career points... set school record with 506 assists.

### Personal

Cassandra Jeannette Murray... born May 27, 1982... daughter of Jack and Katie Murray... has sisters (Anna-25 and Jamie-23)... majoring in elementary education.

MURRAY'S CAREER STATISTICS

Year	GP/GS	FG-A	FG %	3FG-A	3FG %	FT-A	FT %	Pts.	Avg.	RB-Avg.	PF/D	A TO	B	S	Min.
2000-01	27/27	144-351	.410	41-111	.369	42-57	.737	371	13.7	163-6.0	62/1	58 78	18	45	741
2001-02	28/27	124-339	.366	28-99	.283	49-66	.742	325	11.6	174-6.2	65/1	41 77	29	39	726
Totals	55/54	268-690	.388	69-210	.328	91-123	.739	696	12.6	337-6.1	127/2	99 155	47	84	1467

# RETURNERS

# GAYNELL REESE

5-8 • JUNIOR • GUARD  
MAPLE HEIGHTS, OH • BEDFORD HS



Most athletically gifted player on the team... can shoot from the outside or take it hard to the basket.

#### At SC 2001-02

Averaged 3.7 points and 1.9 rebounds... had career-high 12 points against both Bluefield State and Alderson-Broaddus... also had two other double-figure scoring outings... grabbed a career-high six rebounds against Concord at the WVIAC Tournament.

#### 2000-01

Averaged 1.6 points and 1.2 rebounds... recorded season-highs of four points, three rebounds, and two assists against Columbia Union.

#### High School

Standout at Bedford High School... excelled at track and field... placed sixth in state long jump competition... earned All-District basketball honors as a senior.

#### Personal

Gaynell Maria Reese... born June 1, 1982... daughter of Bennie and Brenda Reese... has sisters (Tameka-28 and Shari-18)... majoring in sports management.

REESE'S CAREER STATISTICS

Year	GP/GS	FG-A	FG %	3FG-A	3FG %	FT-A	FT %	Pts.	Avg.	RB-Avg.	PF/D	A	TO	B	S	Min.
2000-01	15/0	8-28	.286	0-0	.000	8-16	.500	25	1.6	18-1.2	9/0	3	6	0	3	79
2001-02	27/0	35-88	.398	0-3	.000	30-41	.732	100	3.7	52-1.9	32/0	14	34	2	14	260
<b>Totals</b>	<b>42/0</b>	<b>43-116</b>	<b>.370</b>	<b>0-3</b>	<b>.000</b>	<b>38-57</b>	<b>.667</b>	<b>125</b>	<b>2.9</b>	<b>70-1.6</b>	<b>41/0</b>	<b>17</b>	<b>40</b>	<b>2</b>	<b>17</b>	<b>339</b>

# RETURNERS

# ASHLEY VAN NORDEN

5-5 • JUNIOR • GUARD  
HAGERSTOWN, MD • WILLIAMSPORT HS



One of the best ball-handlers in the conference... leader at point guard position... good shooter with three-point range.

#### At SC 2001-02

Averaged 5.0 points and 1.7 rebounds... led team in assists with a 3.1 average.. scored a career-high 13 points against Bluefield State... hit in double figures in five games... dished out a season-high six assists on three occasions... had five assists or more on six occasions... was perfect from the free throw line in seven games.

#### 2000-01

Averaged 4.1 points and 1.9 rebounds... scored a then career-high 10 points against Columbia Union... second on team in assists with 75... had career-high seven rebounds gainst West Liberty and added career-high eight assists against Alderson-Broaddus.

#### High School

Standout at Williamsport High School... was All-County and All-MVAL in both basketball and soccer... averaged 11 points and 5 assists as a senior.

#### Personal

Ashley Nicole van Norden... born August 13, 1982... daughter of Archie and Cathy van Norden... has sister (Emilee-17) and brother (Tim-14)... majoring in communications.

VAN NORDEN'S CAREER STATISTICS

Year	GP/GS	FG-A	FG %	3FG-A	3FG %	FT-A	FT %	Pts.	Avg.	RB-Avg.	PF/D	A	TO	B	S	Min.
2000-01	26/13	38-113	.275	14-51	.275	17-23	.739	107	4.1	50-1.9	42/1	75	48	0	19	525
2001-02	28/17	51-138	.370	16-59	.271	22-27	.815	140	5.0	48-1.7	46/1	89	72	0	16	641
<b>Totals</b>	<b>54/30</b>	<b>89-251</b>	<b>.354</b>	<b>30-110</b>	<b>.272</b>	<b>39-50</b>	<b>.780</b>	<b>247</b>	<b>4.5</b>	<b>98-1.8</b>	<b>88/2</b>	<b>164</b>	<b>120</b>	<b>0</b>	<b>35</b>	<b>1166</b>

# CARRIE KUNKEL



5-8 • SOPHOMORE • GUARD  
GETTYSBURG, PA • GETTYSBURG HS



Sharp shooter from any spot on the court... all-around player who sees the court well and makes good decisions.

**At SC**  
**2001-02**

Averaged 5.2 points and 2.1 rebounds... second on the team in three-pointers with 21... scored a career-high 18 points and grabbed a career-high six rebounds against Ohio Valley.

**High School**

Standout at Gettysburg High School... two year captain... led team to state playoffs as a senior... three-time Mid-Penn All-Conference player... averaged nearly 13 points, six rebounds, and fives in senior year.

**Personal**

Carrie Jo Kunkel... born June 4, 1983... daughter of Jim and Kathy Kunkel... has brother (Ryan-21)... majoring in sports management.

KUNKEL'S CAREER STATISTICS

Year	GP/GS	FG-A	FG %	3FG-A	3FG %	FT-A	FT %	Pts.	Avg.	RB-Avg.	PF/D	A TO	B	S	Min.
2001-02	28/1	52-156	.333	21-74	.284	21-28	.750	146	5.2	60-2.1	41/1	17 33	0	19	146

# RETURNERS

# DANIELLE MURRAY



5-11 • SOPHOMORE • FORWARD  
MARTINSBURG, WV • MARTINSBURG HS



**Aggressive inside player... very intuitive and determined to be a factor this year... can run the floor like a guard.**

**At SC  
2001-02**

Averaged 2.1 points and 2.0 rebounds... recorded a career-high seven points against West Virginia State... had a career-high seven rebounds against Bluefield State... scored six points and grabbed five rebounds in 10 minutes of action against UDC.

**High School**

Lettered in both basketball and tennis at Martinsburg High School... earned Rotary Club Outstanding Athlete Award... tabbed a Weekly Star by *The Journal*.

**Personal**

Danielle Denise Murray... born May 11, 1983... daughter of Dennis and Barbara... has sisters (Stephanie-22, Teresa-4, Liza-4) and brother (Michael-9)... majoring in psychology.

MURRAY'S CAREER STATISTICS

Year	GP/GS	FG-A	FG %	3FG-A	3FG %	FT-A	FT %	Pts.	Avg.	RB-Avg.	PF/D	A TO	B	S	Min.
2001-02	16/0	8-26	.308	0-0	.000	8-14	.571	34	2.1	32-3.0	13/0	5 13	0	4	109

# RETURNERS

# LINDSAY STEWART

5-6 • SOPHOMORE • GUARD  
ROMNEY, WV • HAMPSHIRE HS



**Tremendous speed that is hard to match... floor general... allows team to excel at the running game.**

#### 2001-02

Averaged 1.5 points and 1.1 rebounds... had a career-high six points against West Virginia State... grabbed three rebounds on three occasions... had career-high two assists against Ohio Valley... recorded two blocked shots on the year.

#### High School

Standout at Hampshire High School... was All-State in basketball, track and field, and volleyball... earned nine letters in three sports... averaged 10 points, 6 steals, and 4 rebounds in senior year.

#### Personal

Lindsay Shea Stewart... born July 5, 1983... daughter of Tim and Peggy Stewart... has brothers (Bart-22 and Trey-15)... majoring in therapeutic recreation.

#### STEWART'S CAREER STATISTICS

Year	GP/GS	FG-A	FG %	3FG-A	3FG %	FT-A	FT %	Pts.	Avg.	RB-Avg.	PF/D	A	TO	B	S	Min.
2001-02	22/2	8-26	.308	1-8	.125	16-22	.727	33	1.5	25-1.1	30/1	11	20	2	11	196

# VALERIE CHANEY

6-3 • JUNIOR • FORWARD-CENTER  
FORT ASHBY, WV • FRANKFORT HS



**Excellent shooting form with a soft touch... natural rebounder and shot blocker.**

**At SC  
2000-01**

Played in 23 games for the Rams...averaged 2.1 points and 2.5 rebounds as a reserve... third on the team in blocked shots with 16... was 9-of-12 form the charity stripe.

**High School**

Standout at Frankfort High School... was All-State in basketball and volleyball... scored 1,200 career points... led team to a 21-2 season in senior year.

**Personal**

Valerie Lynn Chaney... born March 17, 1979... daughter of Richard and Melinda Chaney... has sister (Vanessa-13)... majoring in recreation/leisure studies.

# LENA MOORE

5-10 • SOPHOMORE • FORWARD-CENTER  
WASHINGTON, DC • THE NEWPORT SCHOOL



**Strong inside player who can move up and down the court... has great range as a shooter.**

**At NC A&T  
2001-02**

Played at North Carolina A&T... scored 19 points in four games... was a perfect 3-for-3 form the free throw line... added 14 rebounds and an assist.

**High School**

Standout at The Newport School...earned first team All-Private School honors... an All-County selection.

**Personal**

Sirlena Michelle Moore... born October 9, 1982... daughter of Adrienne Wynn... has brother (Terence)... majoring in mass communications.

## NEWCOMERS

# LATOYA FISHER

6-0 • FRESHMAN • FORWARD-CENTER  
GERMANTOWN, MD • SENECA VALLEY HS



32



**Tenacious rebounder... can elevate above most others on the court... has floor quickness with the ability to shoot form the outside.**

### High School

Standout at Seneca Valley High School... earned honorable mention All-Met honors from the *Washington Post*... had jersey retired... also a standout in volleyball.

### Personal

LaToya Monique Fisher... born January 27, 1984... daughter of George and Gina Fisher... has sister (Tyronda-23)... majoring in computer information systems.

# CASEY LANDRUM

5-11 • FRESHMAN • FORWARD  
YORKTOWN, VA • TABB HS



33



**Post player with strong moves on the inside... can go to the left or the right.**

### High School

Standout at Tabb High School... was All-District and All-Region in both basketball and softball... earned District MVP honors in basketball... captained both teams as a senior.

### Personal

Casey Jaclyn Landrum... born November 27, 1983... daughter of Andy and Terry Landrum... has sisters (Courtney-24 and Christy-16)... majoring in social work.

# CAROLYN MALACHI

5-11 • FRESHMAN • FORWARD-CENTER  
UPPER MARLBORO, MD • ELIZABETH SETON HS



**Fundamental post player with strong moves on the inside... can go to the left or the right.**

#### High School

Played at national powerhouse Elizabeth Seton High School... earned Most Improved Player honors... averaged 10 points and six rebounds.

#### Personal

Carolyn Malachi... born July 5, 1984... daughter of Kevin and Marilyn Malachi... has sister (Keira-11) and brother (John-Thomas-10)... majoring in business administration.

# AMY OLIVA

5-2 • JUNIOR • GUARD  
WAUKEGAN, IL • WAUKEGAN HS



**Transfer who will be eligible for the 2003-04 season... played for two seasons at Wheeling Jesuit University.**

#### At Wheeling Jesuit

Earned All-Tournament honors as a freshman at WVIAC Tournament... also gained Defensive Player Award.

#### High School

Standout at Waukegan High School... two-time All-Conference and All-Lake County selection...

#### Personal

Amy Oliva... born July 26, 1982.. daughter of Ismael and Irma Oliva ... has brother (David-19)... majoring in recreation /leisure studies.

# 2001-02 STATISTICS AND RESULTS

## 2001-02 INDIVIDUAL STATISTICS

Name	G/GS	FG-A	FG%	3FG-A	3FG%	FT-A	FT %	PTS-Avg.	Reb.		PF/D	A	TO	BL	S	Min.
									O-D	Tot.-Avg.						
C. Murray	28/27	124-339	.366	28-99	.283	49-66	.742	325-11.6	53-121	174-6.2	65/1	41	77	29	39	726
M. Staves	28/24	97-195	.497	0-0	.000	72-160	.450	266-9.5	113-111	224-8.0	81/2	41	46	1	26	735
A. Cowans	28/26	88-240	.367	13-53	.245	46-69	.667	235-8.4	32-36	68-2.4	59/1	29	55	7	41	595
B. Hamilton	27/26	69-163	.423	0-1	.000	56-118	.475	194-7.2	94-123	217-8.0	60/0	39	50	9	41	717
G.Siemer	24/4	70-154	.455	0-0	.000	17-29	.586	157-6.5	47-53	100-4.2	32/0	13	18	20	15	375
C. Kunkel	28/1	52-156	.333	21-74	.284	21-28	.750	146-5.2	25-35	60-2.1	41/1	17	33	0	18	506
A. van Norden	28/17	51-138	.370	16-59	.271	22-27	.815	140-5.0	11-37	48-1.7	46/1	89	72	0	16	641
J. Westervelt	19/2	49-119	.426	1-1	1.000	32-38	.842	131-6.9	42-42	84-4.4	19/0	8	16	0	4	326
Barb Oller	26/11	26-87	.299	11-48	.229	56-77	.727	119-4.6	11-34	45-1.7	44/0	65	49	1	33	489
Gaynell Reese	27/0	35-88	.398	0-3	.000	30-41	.732	100-3.7	15-37	52-1.9	32/0	14	34	2	14	260
D. Murray	16/0	13-27	.481	0-0	.000	8-14	.571	34-2.1	13-19	32-2.0	13/0	5	13	0	4	109
L. Stewart	22/2	8-26	.308	1-8	.125	16-22	.727	33-1.5	10-15	25-1.1	30/1	11	20	2	11	196
<b>Shepherd</b>	<b>28/28</b>	<b>682-1728</b>	<b>.395</b>	<b>91-346</b>	<b>.263</b>	<b>425-689</b>	<b>.617</b>	<b>524-714</b>	<b>1238-44.2</b>	<b>1880-67.1</b>	<b>522/7</b>	<b>372</b>	<b>488</b>	<b>71</b>	<b>262</b>	<b>5675</b>
<b>Opponent Totals</b>	<b>28/28</b>	<b>563-1499</b>	<b>.376</b>	<b>90-327</b>	<b>.275</b>	<b>387-569</b>	<b>.680</b>	<b>316-667</b>	<b>983-35.1</b>	<b>1603-57.2</b>	<b>541/--</b>	<b>283</b>	<b>560</b>	<b>70</b>	<b>226</b>	<b>5675</b>

**Deadball Rebounds:** Shepherd ..... 119  
Opponents ..... 88

## FINAL 2001-02 RESULTS

	<u>Date</u>	<u>Opponent</u>	<u>W/L</u>	<u>Score</u>	<u>High Scorer</u>	<u>High Reb.</u>	<u>Opp. High Scorer</u>
N	26	@ Shippensburg	L	51-64	Murray-19	Hamilton-13	Swingler-17
	29	Columbia Union	W	73-56	Westervelt-18	Hamilton-15	James-13
D	4	Bowie State	W	65-43	Murray/Staves-11	Staves-13	Todd-10
	8	Davis & Elkins	W	63-51	Murray-21	Murray-11	Rasor-12
	18	@ UDC	W	73-42	Cowans-14	Westervelt-6	Crowell-9
	28	vs. Benedict	W	77-56	Staves-23	Staves-10	Crittington-22
	29	@ Bowie State	L	65-69	Murray-21	Staves-12	Baker-24
J	3	Bloomsburg	L	49-75	Siemer-9	Hamilton-6	Pugh/ LaBuda-13
	5	@ Wheeling Jesuit	W	76-69	Murray-25	Staves-9	Yoder-12
	7	@ West Liberty	L	48-50	Staves-12	Staves-10	Martin-14
	10	Salem International	W	51-47	Murray-11	Hamilton-11	Self-20
	12	Fairmont	W	58-35	Siemer-14	Hamilton-12	Gattuso-8
	14	Alderson-Broaddus	W	83-61	Cowans-15	Siemer-8	Morrison-24
	17	@ WVU-Tech	L	55-63	Staves-17	Staves-13	Reed-18
	19	@ Charleston	W	73-52	Siemer-15	Staves-13	Turner-14
	24	Bluefield State	W	81-53	Siemer-22	Staves-13	Miller-21
	26	Concord	W	54-46	Murray-13	Murray-8	Pollinger-14
	28	@ WV State	W	69-43	Cowans/Staves-10	Siemer-7	Adkins-9
	31	Ohio Valley	W	82-39	Siemer-19	Siemer-10	Isby-11
F	2	Glenville	W	76-69 (OT)	Murray-20	Hamilton-15	McBrien-19
	6	UDC	W	73-58	Murray-18	Westervelt-11	Jenkins-18
	9	@ Davis & Elkins	W	67-49	Hamilton-17	Hamilton-13	Johnson-9
	11	@ WV Wesleyan	W	82-80	Murray/Staves-20	Hamilton-16	Davis-17
	14	@ Glenville	L	49-58	Hamilton-13	Hamilton-7	Wyatt-17
	21	@ Alderson-Broaddus	L	60-63	Hamilton-13	Staves-14	Grubb-14
	23	WV Wesleyan	L	63-68	Murray-16	Siemer-8	Carvajal-16
	25	Bluefield State #	W	102-75	Cowans-17	Murray-10	Miller-31
	27	Concord #	L	62-69	Westervelt-17	Staves-10	Kestner-25
		# WVIAC Tournament					

# 2001-02 WVIAC INFORMATION

## FINAL 2001-02 REGULAR SEASON STANDINGS

<u>School</u>	<u>Overall</u>	<u>WVIAC</u>	<u>Power Rating</u>
Glenville	23-3	17-1	173.89
West Liberty	24-2	17-1	165.56
<b>Shepherd</b>	<b>18-8</b>	<b>13-5</b>	<b>130.56</b>
WV Wesleyan	12-14	12-6	115.00
Wheeling Jesuit	18-8	11-7	98.89
Charleston	11-15	9-9	80.00
WVU-Tech	12-14	8-10	75.56
Davis & Elkins	11-15	8-10	73.89
WV State	11-15	8-10	71.67
Salem International	9-17	7-11	66.11
Concord	12-14	7-11	65.00
Fairmont	13-13	6-12	56.67
Alderson-Broaddus	6-20	5-13	48.33
Bluefield State	4-14	7-20	35.56
Ohio Valley	5-21	3-15	-----

# Ohio Valley not eligible for 2001-02 WVIAC Championships

## 2001-02 WVIAC TOURNAMENT RESULTS

### FIRST ROUND

#8 Davis & Elkins 58	.....	#9 WV State 39
#5 Wheeling Jesuit 83	.....	#12 Fairmont 82
#4 WV Wesleyan 77	.....	#13 Alderson-Broaddus 70
<b>#3 Shepherd 102</b>	.....	<b>#14 Bluefield State 75</b>
#11 Concord 74	.....	#6 Charleston 63
#7 WVU-Tech 76	.....	#10 Salem International 67

### QUARTERFINALS

#1 Glenville 67	.....	#8 Davis & Elkins 49
#5 Wheeling Jesuit 68	.....	#4 WV Wesleyan 54
<b>#11 Concord 69</b>	.....	<b>#3 Shepherd 62</b>
#2 West Liberty 85	.....	#7 WVU-Tech 56

### SEMIFINALS

#1 Glenville 70	.....	#5 Wheeling Jesuit 56
#2 West Liberty 80	.....	#11 Concord 53

### CHAMPIONSHIP

#1 Glenville 54	.....	#2 West Liberty 56
-----------------	-------	--------------------

### TOURNAMENT MOST VALUABLE PLAYER

Tracy Wyatt ..... Glenville

### ALL-TOURNAMENT TEAM

Kelly West (WL)	Andrea Gianni (WVW)
Crystal Kestner (CC)	Tracy Wyatt (GSC)
Amber Ellison (WJU)	Tammy Spence (GSC)
Dana Levendoski (WL)	Missy Cook (WVT)
Jaana Kotova (WL)	Amanda Mortelette (GSC)

### RAWLINGS PLAYERS OF THE WEEK

November 19	.....	Kristen Gattuso (FSC)
November 26	.....	Kelly West (WL)
December 3	.....	Crystal Kestner (CC), Tracy Wyatt (GSC)
December 10	.....	Kwame Clark (WJU)
December 17	.....	Jennifer Turner (UC)
January 7	.....	Sarah Batchelder (UC), Tammy Spence (GSC)
January 14	.....	Sarah Batchelder (UC)
January 21	.....	Kelly West (WL)
January 28	.....	Tammy Spence (GSC)
February 4	.....	Amber Morrison (AB)
February 11	.....	Missy Cook (WVT)
February 18	.....	Kristen Self (SIU)
February 25	.....	Renee Gagnier (CC), Shay Glauser (WL)

## ALL-CONFERENCE TEAMS

### FIRST TEAM

Missy Cook	.....	WVU-Tech
Amber Ellison	.....	Wheeling Jesuit
Cassie Miller	.....	Alderson-Broaddus
<b>Cassie Murray</b>	.....	<b>Shepherd</b>
Jessie Roeth	.....	WV Wesleyan
Tammy Spence	.....	Glenville
Kelly West	.....	West Liberty
Jennifer Wilson	.....	Fairmont
Tracy Wyatt	.....	Glenville

### SECOND TEAM

Sarah Batchelder	.....	Charleston
Renee Gagnier	.....	Concord
Dana Levendoski	.....	West Liberty
Amber Morrison	.....	Alderson-Broaddus
Kristen Self	.....	Salem International
<b>Makia Staves</b>	.....	<b>Shepherd</b>
Jennifer Turner	.....	Charleston
Jill Yoder	.....	Wheeling Jesuit

### HONORABLE MENTION

Jaime Adkins	.....	WV State
Andrea Gianni	.....	WV Wesleyan
Shay Glauser	.....	West Liberty
Latissha Isby	.....	Ohio Valley
Colleen McBrien	.....	Glenville
Gail Raser	.....	Davis & Elkins
Carrie Triplett	.....	Glenville

### ALL-FRESHMEN

Sarah Batchelder	.....	Charleston
Frances Carvajal	.....	WV Wesleyan
Grace Cyphert	.....	Davis & Elkins
Kristen Gattuso	.....	Fairmont
Kristen Self	.....	Salem International

### PLAYER OF THE YEAR

Tracy Wyatt ..... Glenville

### FRESHMAN OF THE YEAR

Sarah Batchelder ..... Charleston

### COACH OF THE YEAR

Steve Harold ..... Glenville

### WVIAC NAMES & NUMBERS

<b>Commissioner:</b>	.....	<b>Barry Blizzard</b>
<b>Associate Commissioner:</b>	.....	<b>Will Prewitt</b>
<b>Secretary:</b>	.....	<b>Karen Mandeville</b>
<b>Office phone:</b>	.....	<b>304/487-6298</b>
<b>Fax phone:</b>	.....	<b>304/487-6299</b>
<b>Fax phone:</b>	.....	<b>304/473-8056</b>
<b>Supervisor of Officials:</b>	.....	<b>John Holt</b>
<b>Office phone:</b>	.....	<b>304/372-7008</b>
<b>WVIAC Fax-on-Demand:</b>	.....	<b>800/300-2050</b>
<b>Passcode:</b>	.....	<b>9842</b>
<b>WBB Standings/Stats request number:</b>	.....	<b>1018</b>
<b>Web Address</b>	.....	<b><a href="http://www.wviac.org">http://www.wviac.org</a></b>

# THE OPPONENTS

## GANNON

NOVEMBER 22 @ GANNON

**Location** ..... Erie, PA 16541  
**Enrollment** ..... 3,300  
**Nickname** ..... Lady Knights  
**Colors** ..... Maroon, White & Gold  
**Affiliation** ..... GLIAC/NCAA II  
**Pres.** ..... Dr. Antoine Garibaldi  
**AD** ..... Michael Corbett  
**AD Phone** ..... 814/871-7416  
**Arena** ..... Hammermill Center  
**SID** ..... Dan Teleski  
**SID Office Phone** .... 814/871-7418  
**SID Fax Phone** ..... 814/871-7794

**Head Coach** ..... Cleve Wright  
**Alma Mater** ..... Berea /1989  
**Record @ GU** ..... First year  
**Overall Record** ..... same  
**Office Phone** ..... 814/871-7419  
**Assistant Coaches** ..... Mike Polon  
 Andrea Bloodworth  
**2001-02 Record** ..... 20-8  
**2001-02 Conf. Record** ..... 11-6  
**Starters Ret./Lost** ..... 3/2  
**Letterwinners Ret./Lost** ..... 8/5  
**Series Record** ..... First Meeting

Key Returning Players	Yr.	Pos.	Ht.	PPG	RPG
Molly Dorrell	Sr.	G	5-7	2.4	1.5
Kelly Irwin	Jr.	G	5-7	10.2	1.6

## SLIPPERY ROCK

POSSIBLE OPP. @ GANNON TRNY. • NOV 23

**Location** ..... Slippery Rock, PA  
**Enrollment** ..... 7,200  
**Nickname** ..... The Rock  
**Colors** ..... Green & White  
**Affiliation** ..... PSAC/NCAA II  
**President** ..... Dr. G. Warren Smith  
**AD** ..... Paul Lueken  
**AD Phone** ..... 724/738-2021  
**Arena** ..... Morrow Field House  
**SID** ..... Bob McComas  
**SID Office Phone** .... 724/738-2777  
**SID Fax Phone** ..... 724/738-4761

**Head Coach** ..... Laurel Heilman  
**Alma Mater** ... Slippery Rock/1986  
**Record @ SRU** ..... 32-22 (3rd year)  
**Overall Record** 141-117 (11th year)  
**Office Phone** ..... n/a  
**Assistant Coach** .... Carrie Osborne  
**2001-02 Record** ..... 15-12  
**2001-02 Conf. Record** ..... 8-4  
**Starters Ret./Lost** ..... n/a  
**Letterwinners Ret./Lost** ..... n/a  
**Series Record** ..... First Meeting

Key Returning Players	Yr.	Pos.	Ht.	PPG	RPG
Missy McKavish	Sr.	G	5-4	9.2	4.6
Stacey Green	So.	F	5-10	10.7	8.9

## BOWIE STATE

POSSIBLE OPP. @ GANNON TRNY. • NOV 23

**Location** ..... Bowie, MD  
**Enrollment** ..... 5,506  
**Nickname** ..... Lady Bulldogs  
**Colors** ..... Black & Gold  
**Affiliation** ..... CIAA/NCAA II  
**President** ..... Dr. Calvin Lowe  
**AD** ..... Charles Davis  
**AD Phone** ..... 301/860-3570  
**Arena** ..... Jordan Basketball Arena  
**SID** ..... Scott Rouch  
**SID Office Phone** .... 301/860-3574  
**SID Home Phone** .... 301/390-7545  
**SID Fax Phone** ..... 301/860-3585

**Head Coach** ..... Russell Davis  
**Alma Mater** ..... Maryland/1984  
**Record @ BS** ..... n/a  
**Overall Record** ..... n/a  
**Office Phone** ..... 301/860-3573  
**Asst. Coaches** ..... n/a  
**2001-02 Record** ..... n/a  
**2001-02 Conf. Record** ..... n/a  
**Starters Ret./Lost** ..... n/a  
**Letterwinners Ret./Lost** ..... n/a  
**Series Record** ..... BSU leads, 1-0

Key Returning Players	Yr.	Pos.	Ht.	PPG	RPG
Tamara Barnes	Jr.	G	5-7		

## SHIPPENSBURG

NOVEMBER 26 @ SHEPHERD

**Location** . Shippensburg, PA 17257  
**Enrollment** ..... 7,000  
**Nickname** ..... Lady Raiders  
**Colors** ..... Red & Blue  
**Affiliation** ..... PSAC/NCAA II  
**Pres.** ..... Dr. Anthony F. Ceddia  
**Interim AD** ..... Roberta Page  
**AD Phone** ..... 717/477-1711  
**Arena** ..... Heiges Field House  
**SID** ..... John Alosi  
**SID Office Phone** .... 717/477-1201  
**SID Fax Phone** ..... 717/477-1253

**Head Coach** ..... Kristy Trn  
**Alma Mater** ... Shippensburg/1993  
**Record @ SU** ..... 52-11 (two years)  
**Overall Record** 72-20 (three years)  
**Office Phone** ..... 717/477-1543  
**Assistant Coach** ..... Jessie Gordon  
**2001-02 Record** ..... 20-9  
**2001-02 Conf. Record** ..... 8-4  
**Starters Ret./Lost** ..... 4/1  
**Letterwinners Ret./Lost** ..... 8/6  
**Series Record** ..... SU leads, 10-0

Key Returning Players	Yr.	Pos.	Ht.	PPG	RPG
Jennifer Scaffidi	So.	G	5-8	13.2	3.4
Emily Swinger	Jr.	F	5-10	12.2	5.7

## WEST CHESTER

NOVEMBER 30 @ WEST CHESTER TRNY.

**Location** ..... West Chester, PA  
**Enrollment** ..... 13,000  
**Nickname** ..... Golden Rams  
**Colors** ..... Purple & Gold  
**Affil.** ..... PSAC/NCAA II  
**Pres.** .... Dr. Madeleine Wing Adler  
**AD** ..... Dr. Edward M. Matejkovic  
**AD Phone** ..... 610/436-3555  
**Arena** ..... Hollinger Field House  
**SID** ..... Tom Di Camillo  
**SID Office Phone** ... 610/436-3316  
**SID Fax Phone** ..... 610/436-2966

**Head Coach** ..... Deidre Kane  
**Alma Mater** ..... Dayton/1976  
**Record @ WCU** ... 229-185 (15 years)  
**Overall Record** ... 271-219 (18 years)  
**Office Phone** ..... 610/436-3399  
**Asst. Coach** ..... Jim Stinger  
**2001-02 Record** ..... 18-10  
**2001-02 Conf. Record** ..... 8-4  
**Starters Ret./Lost** ..... n/a  
**Letterwinners Ret./Lost** ..... n/a  
**Series Record** ..... First Meeting

Key Returning Players	Yr.	Pos.	Ht.	PPG	RPG
n/a	n/a	n/a	n/a	n/a	n/a

## MILLERSVILLE

NOVEMBER 30 @ WEST CHESTER TRNY.

**Location** ..... Millersville, PA  
**Enrollment** ..... 2,900  
**Nickname** ..... Marauders  
**Colors** ..... Black & Gold  
**Affil.** ..... PSAC/NCAA II  
**President** ... Dr. Joseph A. Caputo  
**AD** ..... Daniel N. Aulette  
**AD Phone** ..... 717/872-3361  
**Arena** ..... Pucillo Gym  
**SID** ..... Greg Wright  
**SID Office Phone** ... 717/872-3100  
**SID Fax Phone** ..... 717/872-3995

**Head Coach** ..... Mary Fleig  
**Record @ MU** ..... 207-117(12th yr.)  
**Overall Record** .. 329-177 (19th yr.)  
**Office Phone** ..... n/a  
**Asst. Coaches** ... Darlene Newman  
 Ginny Ackiewicz  
**2001-02 Record** ..... 22-9  
**2001-02 Conf. Record** ..... 11-1  
**Starters Ret./Lost** ..... n/a  
**Letterwinners Ret./Lost** ..... n/a  
**Series Record** ..... First Meeting

Key Returning Players	Yr.	Pos.	Ht.	PPG	RPG
Gema Robles	Sr.	G	5-5	14.2	6.7
Morgan Banks	Sr.	G-F	5-8	12.7	n/a

# THE OPPONENTS

## DAVIS & ELKINS

DECEMBER 7 @ DAVIS & ELKINS  
JANUARY 15 @ SHEPHERD

**Location** ..... Elkins, WV  
**Enrollment** ..... 654  
**Nickname** ..... Senators  
**Colors** ..... Scarlet & White  
**Affiliation** ..... WVIAC/NCAA II  
**President** ..... Dr. G. Thomas Mann  
**AD** ..... Ralph Hill  
**AD Phone** ..... 304/637-1251  
**Arena** ..... Memorial Gym  
**SID** ..... Nick Allen  
**SID Office Phone** .... 304/637-1390  
**SID Fax Phone** ..... 304/637-1414

**Head Coach** ..... Jay Dailer  
**Alma Mater** ..... WVU/1973  
**Record @ D&E** ..... 32-51 (3 years)  
**Overall Record** ..... same  
**Office Phone** ..... 304-637-1387  
**Asst. Coach** ..... Steve Belan  
**2001-02 Record** ..... 12-16  
**2001-02 Conf. Record** ..... 8-10  
**Starters Ret./Lost** ..... 2/3  
**Letterwinners Ret./Lost** ..... 8/4  
**Series Record** ..... SC leads, 24-15

Key Returning Players	Yr.	Pos.	Ht.	PPG	RPG
Grace Cyphert	So.	F	5-11	9.3	5.6
Morgan Johnson	Jr.	F-C	5-11	7.6	4.6

## MT. ALOYSIUS

DECEMBER 17 @ SHEPHERD

**Location** ..... Cresson, PA  
**Enrollment** ..... 900  
**Nickname** ..... Mounties  
**Colors** ..... Navy Blue & Gray  
**Affiliation** ..... NAIA II  
**President** ..... Dr. Mary Ann Dillon  
**AD** ..... Tim Kelly  
**AD Phone** ..... 814/886-6373  
**Arena** ..... Health & Fitness Center  
**SID** ..... Lance Loya  
**SID Office Phone** .... 814/886-6314  
**SID Fax Phone** ..... 814/886-6446

**Head Coach** ..... Dave Adams  
**Alma Mater** ..... n/a  
**Record @ WJ** ..... n/a  
**Overall Record** ..... same  
**Office Phone** ..... 304/243-2214  
**Assistant Coach** ..... Brian Denis  
..... Corey Botteicher  
**2000-01 Record** ..... 19-9  
**2000-00 Conf. Record** ..... 12-8  
**Starters Ret./Lost** ..... 4/1  
**Letterwinners Ret./Lost** ..... n/a  
**Series Record** ..... First Meeting

Key Returning Players	Yr.	Pos.	Ht.	PPG	RPG
Ginger Fanelli	Sr.	G	5-6		
Randi Baker	Sr.	F	5-10		

## UDC

JANUARY 20 @ SHEPHERD  
FEBRUARY 13 @ UDC

**Location** ..... Washington, DC  
**Enrollment** ..... 5,468  
**Nickname** ..... Lady Firebirds  
**Colors** ..... Red & Gold  
**Affiliation** ..... NCAA II  
**President** ..... Dr. William L. Pollard  
**AD** ..... Michael McLeese  
**AD Phone** ..... 202/274-5024  
**Arena** ..... Physical Activities Center  
**SID** ..... Bernard Payton  
**SID Office Phone** .... 202/274-5064  
**SID Fax Phone** ..... 202/274-5065

**Head Coach** ..... n/a  
**Alma Mater** ..... n/a  
**Record @ UDC** ..... n/a  
**Overall Record** ..... n/a  
**Office Phone** ..... n/a  
**Assistant Coach** ..... n/a  
**2001-02 Record** ..... n/a  
**Starters Ret./Lost** ..... n/a  
**Letterwinners Ret./Lost** ..... n/a  
**Series Record** ..... SC leads, 5-1

Key Returning Players	Yr.	Pos.	Ht.	PPG	RPG
-----------------------	-----	------	-----	-----	-----

## MARSHALL

DECEMBER 30 @ MARSHALL

**Location** ..... Huntington, WV  
**Enrollment** ..... 16,000  
**Nickname** ..... Thundering Herd  
**Colors** ..... Green & White  
**Affil.** ..... Mid-American/NCAA II  
**President** ..... Dr. Dan Angel  
**AD** ..... Lance West  
**Arena** ..... Cam Henderson Center  
**SID** ..... Ricky Hazel  
**SID Office Phone** .... 304/696-4660  
**SID Fax Phone** ..... 304/696-2325

**Head Coach** ..... Royce Chadwick  
**Al. Mater** .. Southwestern Okla. St.  
**Record @ MU** ..... n/a  
**Overall Record** ..... n/a  
**Office Phone** ..... 304/  
**Asst. Coaches** ... Kidada Holtzclaw  
..... John Sutherland  
..... Roxanne White  
**2001-02 Record** ..... 9-19  
**2001-02 Conf. Record** ..... 5-11  
**Starters Ret./Lost** ..... n/a  
**Letterwinners Ret./Lost** ..... n/a  
**Series Record** ..... MU leads, 3-0

Key Returning Players	Yr.	Pos.	Ht.	PPG	RPG
Amy Reed	Sr.	C	6-3	8.3	5.1
Catie Knable	Jr.	F	6-2	5.2	6.6

## WV STATE

JANUARY 7 @ SHEPHERD

**Location** ..... Institute, WV  
**Enrollment** ..... 4,794  
**Nickname** ..... Yellow Jackets  
**Colors** ..... Old Gold & Black  
**Affiliation** ..... WVIAC/NCAA II  
**President** ..... Dr. W. Hazo Carter  
**AD** ..... Bryce Casto  
**AD Phone** ..... 304/766-3165  
**Arena** ..... Fleming Hall  
**SID** ..... Sean McAndrews  
**SID Office Phone** .... 304/766-4122  
**SID Fax Phone** ..... 304/766-3364

**Head Coach** ..... Gill Heasley  
**Alma Mater** ..... WV State/1976  
**Record @ WVS** ..... 59-94 (6th year)  
**Overall Record** 114-165 (10th year)  
**Office Phone** ..... 304/766-3227  
**Assistant Coach** ..... Eddie Ivy  
**2001-02 Record** ..... 10-16  
**2001-02 Conf. Record** ..... 8-10  
**Starters Ret./Lost** ..... 1/4  
**Letterwinners Ret./Lost** ..... 4/6  
**Series Record** ..... SC leads, 13-8

Key Returning Players	Yr.	Pos.	Ht.	PPG	RPG
Jaime Adkins	Sr.	C	n/a	15.5	6.4
Teena Jackson	So.	G	n/a	7.1	4.1

## WHEELING JESUIT

JANUARY 11 @ SHEPHERD

**Location** ..... Wheeling, WV 26003  
**Enrollment** ..... 1,200  
**Nickname** ..... Lady Cardinals  
**Colors** ..... Red & Gold  
**Affiliation** ..... WVIAC/NCAA II  
**President** Rev. George P. Lundy, SJ  
**AD** ..... Jay DeFruscio  
**AD Phone** ..... 304/243-2365  
**Arena** ..... McDonough Center  
**SID** ..... Susie Lally Levitt  
**SID Office Phone** .... 304/243-2365  
**SID Fax Phone** ..... 304/243-2265

**Head Coach** ..... Joe Key  
**Alma Mater** ..... Miami/1979  
**Record @ WJU** ..... 118-76  
**Overall Record** ..... same  
**Office Phone** ..... 304/243-2365  
**Assistant Coach** ..... Steve Laposki  
**2001-02 Record** ..... 20-9  
**2001-02 Conf. Record** ..... 13-8  
**Starters Ret./Lost** ..... 4/1  
**Letterwinners Ret./Lost** ..... 5/1  
**Series Record** ..... WJ leads, 20-15

Key Returning Players	Yr.	Pos.	Ht.	PPG	RPG
Amber Ellison	Sr.	G	5-9	11.4	5.1
Sarah Barbisch	Sr.	F	6-1	6.0	5.1

# THE OPPONENTS

## WEST LIBERTY JANUARY 13 @ SHEPHERD

**Location** ..... West Liberty WV  
**Enrollment** ..... 2,600  
**Nickname** ..... Hilltoppers  
**Colors** ..... Black & Gold  
**Affiliation** ..... WVIAC/NCAA II  
**President** ..... Dr. Richard Owens  
**AD** ..... James Watson  
**AD Phone** ..... 304/336-8046  
**Arena** ..... ASRC  
**SID** ..... Lynn Ullom  
**SID Office Ph.** ..... 304/336-8320  
**SID Fax Phone** ..... 304/336-8304

**Head Coach** ..... Lynn Ullom  
**Alma Mater** ..... West Liberty/1985  
**Record @ WL** ..... 213-110 (11 years)  
**Overall Record** ..... same  
**Office Phone** ..... 304/336-8320  
**Asst. Coaches** ..... Robin Amend  
**2001-02 Record** ..... 27-4  
**2001-02 Conf. Record** ..... 17-1  
**Starters Ret./Lost** ..... 4/1  
**Letterwinners Ret./Lost** ..... 8/2  
**Series Record** ..... WL leads, 27-8

Key Returning Players	Yr.	Pos.	Ht.	PPG	RPG
Kelly West	Jr.	G	5-3	12.5	4.0
Dana Levendoski	Jr.	F	5-8	9.7	4.7

## SALEM INTERNATIONAL JANUARY 16 @ SALEM INTERNATIONAL

**Location** ..... Salem, WV  
**Enrollment** ..... 500  
**Nickname** ..... Lady Tigers  
**Colors** ..... Green & White  
**Affiliation** ..... WVIAC/NCAA II  
**President** ..... Dr. Richard Ferrin  
**AD** ..... Danny Young  
**AD Phone** ..... 304/782-5286  
**Arena** ..... T. Edward Davis Gym  
**SID** ..... David Zinn  
**SID Office Phone** ..... 304/782-5270  
**SID Fax Phone** ..... 304/782-5634

**Head Coach** ..... David Zinn  
**Alma Mater** ..... WVU/1995  
**Record @ SIU** ..... First Year  
**Overall Record** ..... Same  
**Office Phone** ..... 304/782-5602  
**Asst. Coach** ..... Toni Oliverio  
**2001-02 Record** ..... 9-18  
**2001-02 Conf. Record** ..... 7-11  
**Starters Ret./Lost** ..... 3/2  
**Letterwinners Ret./Lost** ..... n/a  
**Series Record** ..... SIU leads, 20-18

Key Returning Players	Yr.	Pos.	Ht.	PPG	RPG
Kristen Self	So.	G	5-8	16.2	n/a
Giedre Mazeikaite	So.	C	6-4	9.3	6.4

## FAIRMONT JANUARY 18 @ FAIRMONT

**Location** ..... Fairmont, WV  
**Enrollment** ..... 6,742  
**Nickname** ..... Lady Falcons  
**Colors** ..... Maroon & White  
**Affiliation** ..... WVIAC/NCAA II  
**Pres.** ..... Dr. Daniel Bradley  
**AD** ..... Dave Cooper  
**AD Phone** ..... 304/367-4220  
**Arena** ..... Joe Retton Arena  
**SID** ..... Jim Brinkman  
**SID Office Phone** ..... 304/367-4264  
**SID Fax Phone** ..... 304/367-0202

**Head Coach** ..... Steve McDonald  
**Alma Mater** ..... WVU/1980  
**Record @ FSC** ..... 28-27 (two years)  
**Overall Record** ..... same  
**Office Phone** ..... 304/367-4194  
**Asst. Coach** ..... Chrissy Luchuck  
**2001-02 Record** ..... 13-14  
**2001-02 Conf. Record** ..... 6-13  
**Starters Ret./Lost** ..... 1/4  
**Letterwinners Ret./Lost** ..... 4/6  
**Series Record** ..... FSC leads, 25-16

Key Returning Players	Yr.	Pos.	Ht.	PPG	RPG
Jennifer Wilson	Sr.	C	6-1	16.2	8.8
Julie Guttowsky	Jr.	F	5-10	12.1	7.5

## ALDERSON-BROADDUS JANUARY 20 @ A-B FEBRUARY 27 @ SHEPHERD

**Location** ..... Philippi, WV  
**Enrollment** ..... 800  
**Nickname** ..... Battlers  
**Colors** ..... Blue, Gold, & Grey  
**Affiliation** ..... WVIAC/NCAA II  
**President** . Dr. Stephen Markwood  
**AD** ..... J.D. Long  
**Arena** ..... Rex Pyles Gym  
**SID** ..... Michelle Odai  
**SID Phone** ..... 304/457-6347  
**SID Fax Phone** ..... 304/457-6291

**H. Coach** . Laurie Herrington-Arnett  
**Alma Mater** ..... Fairmont/1994  
**Record @ AB** ..... 43-68 (four years)  
**Overall Record** ..... same  
**Office Phone** ..... 304/457-6332  
**Asst. Coaches** ..... n/a  
**2001-02 Record** ..... 6-21  
**2001-02 Conf. Record** ..... 5-13  
**Starters Ret./Lost** ..... 3/2  
**Letterwinners Ret./Lost** ..... 6/3  
**Series Record** ..... AB leads, 18-12

Key Returning Players	Yr.	Pos.	Ht.	PPG	RPG
Kelli Hurst	Sr.	G	5-6	7.6	2.9
Stacy Hackett	So.	G	5-10	6.8	3.8

## WVU-TECH JANUARY 23 @ SHEPHERD

**Location** ..... Montgomery, WV  
**Enrollment** ..... 2,500  
**Nickname** ..... Golden Bears  
**Colors** ..... Royal Blue & Gold  
**Affiliation** ..... WVIAC/NCAA II  
**President** ..... Dr. Karen LaRoe  
**AD** ..... Mike Springston  
**Arena** ..... Baisi Athletic Center  
**SID** ..... Gary Prince  
**SID Office Phone** .... 304/442-3121  
**SID Fax Phone** ..... 304/442-3499

**Head Coach** ..... Tim Thomas  
**Alma Mater** Wheeling Jesuit/1993  
**Record @ WVT** .... 13-15 (one year)  
**Overall Record** ..... same  
**Office Phone** ..... 304/442-3286  
**Asst. Coach** ..... LeAnn Bird  
**2001-02 Record** ..... 13-15  
**2001-02 Conf. Record** ..... 8-10  
**Starters Ret./Lost** ..... 3/2  
**Letterwinners Ret./Lost** ..... n/a  
**Series Record** ..... SC leads, 11-7

Key Returning Players	Yr.	Pos.	Ht.	PPG	RPG
Renita Cowan	So.	G	5-3	3.1	n/a
Taria Jordan	So.	G	5-6	8.5	n/a

## CHARLESTON JANUARY 25 @ SHEPHERD

**Location** ..... Charleston, WV  
**Enrollment** ..... 870  
**Nickname** ..... Golden Eagles  
**Colors** ..... Maroon & Gold  
**Affiliation** ..... WVIAC/NCAA II  
**President** ..... Dr. Edwin Welch  
**AD** ..... Tom Nozica  
**AD Phone** ..... 304/357-4620  
**Arena** ..... Eddie King Gym  
**SID** ..... Kevin Gruber  
**SID Office Phone** .... 304/357-4829  
**SID Fax Phone** ..... 304/357-4988

**Head Coach** ..... Sherry Winn  
**Alma Mater** ..... Charleston/1986  
**Record @ UC** ..... 11-16 one year)  
**Overall Record** 218-152 (13 years)  
**Office Phone** ..... 304/357-4821  
**Asst. Coach** ..... Lynne Fitzgerald  
**2001-02 Record** ..... 11-16  
**2001-02 Conf. Record** ..... 9-10  
**Starters Ret./Lost** ..... 2/3  
**Letterwinners Ret./Lost** ..... 3/5  
**Series Record** ..... UC leads, 16-6

Key Returning Players	Yr.	Pos.	Ht.	PPG	RPG
Sartah Batchelder	So.	G	5-8	15.4	5.3
Jennifer Turner	Sr.	G	5-5	12.7	2.5



# ACTION PHOTOS/HISTORY & RECORDS



Photo by TLC Photography-304-876-6445

Carrie Kunkle on the dribble.



Photo by TLC Photography-304-876-6445

Danielle Murray in action.

## SINGLE-GAME INDIVIDUAL RECORDS

### Most Points Scored:

37 - Sherry Price vs. Concord .....	11-22-85
36 - Sherry Price vs. York .....	2-13-84
34 - Stefanie Carr vs. Frostburg .....	2-24-88
34 - Michele Taylor vs. Salisbury St. ....	1-30-87
34 - Sherry Price vs. Salem .....	1-23-85
33 - Sherry Price vs. Salem .....	1-24-86
33 - Sherry Price vs. Alderson-Broaddus ..	1-22-86
33 - Peachy Meadows vs. Bluefield .....	2-16-80
32 - Ann Giaquinto vs. HJC .....	1-26-82
32 - Mindy Barrons vs. George Mason .....	1-21-76
30 - Jennifer Chapman vs. Fairmont .....	2-19-00
30 - Stephanie Lazor vs. West Liberty .....	12-8-93
30 - Wendy Ramsey vs. Notre Dame (MD) ..	1-29-86
30 - Sherry Price vs. UMBC .....	1-20-86
30 - Ann Giaquinto vs. UMBC .....	1-12-82

### Most Field Goals Attempted:

37 - Ann Giaquinto vs. HJC .....	1981-82
37 - Sherry Price vs. Concord .....	11-22-85
37 - Sherry Price vs. Charleston .....	2-4-86

### Most Field Goals Made:

17 - Sherry Price vs. Concord .....	11-22-85
-------------------------------------	----------

### Highest Field Goal Percentage:

100% - Karen Smith (8-8) vs. Columbia Union .....	11-19-88
---	----------

### Most Three-Point Field Goals Attempted:

12 - Sandi Goulet vs. Salem-Teikyo .....	2-24-99
11 - Leslie Wolfe vs. WV State .....	12-7-98
10 - Sandi Goulet vs. Fairmont .....	2-26-96
10 - Leslie Wolfe vs. Fairmont .....	2-15-97

### Most Three-Point Field Goals Made:

7 - Sandi Goulet vs. Alderson-Broaddus .....	2-26-99
6 - Sandi Goulet vs. Salem-Teikyo .....	2-24-99
5 - Toni DeStefano vs. Wheeling Jesuit .....	2-3-99
5 - Leslie Wolfe vs. WV State .....	12-7-98
5 - Carrie Neil vs. West Liberty .....	2-5-93
5 - Leslie Wolfe vs. Fairmont .....	2-15-97

### Best Three-Point Field Goal Percentage (min. 10 att.):

.700 - Sandi Goulet vs. Alderson-Broaddus (7-10) .....	2-26-99
--	---------

### Best Three-Point Field Goal Percentage (min. 5 att.):

1.000 - Toni DeStefano vs. Wheeling Jesuit (5-5) .....	2-3-99
.800 - Tracy Dean vs. WV Tech (4-5) .....	2-20-88
.800 - Tracy Dean vs. King's College (4-5) .....	1-15-89

### Most Free Throws Attempted:

18 - Tracy Hodges vs. W. Liberty .....	2-2-91
--	--------

### Most Free Throws Made:

15 - Sandi Goulet vs. Fairmont .....	2-13-99
13 - Tracy Hodges vs. W. Liberty .....	2-2-91
13 - Tracy Hodges vs. Navy .....	2-16-91

### Best Free Throw Percentage:

1.000 - Tracy Hodges (9-9) vs. Concord .....	2-13-89
1.000 - Sue Hessenauer (9-9) vs. D&E .....	2-13-93
1.000 - Toni DeStefano (10-10) vs. WV Wesleyan .....	1-22-00
1.000 - Kassandra Kilby (10-10) vs. Davis & Elkins .....	2-21-97
1.000 - Emily Friend (10-10) vs. Salem-Teikyo .....	1-25-97
1.000 - Katie Laidley (12-12) vs. FSC .....	12-20-93

### Most Rebounds:

26 - June Eggleton vs. Salem .....	2-3-79
24 - Michele Taylor vs. Charleston .....	2-4-86
23 - June Eggleton vs. Wheeling Jesuit .....	1978-79

# HISTORY & RECORDS

22 - Tracy Hodges vs. Salem .....	2-20-89
22 - June Eggleton vs. Frostburg .....	1-26-79
21 - Susan Barbarito vs. Ohio Valley .....	1-25-94
21 - Sherry Price vs. Hood .....	2-15-85
21 - Jenny Hawbaker vs. WV Wesleyan .....	1-30-82
20 - Kelly Hussion vs. Wheeling Jesuit .....	2-9-90
20 - Carmella Clark vs. Frostburg .....	1-30-89
20 - Jenny Hawbaker vs. Alderson-Broaddus .....	1-8-82
20 - June Eggleton vs. Gallaudet .....	2-6-79

## Most Steals:

9 - Liz Vaughn vs. Notre Dame .....	1-12-85
9 - Katie Laidley vs. WV Tech .....	11-23-93

## Most Assists:

16 - Liz Vaughn vs. Salem .....	1-24-87
15 - Liz Vaughn vs. Salem .....	1-23-85
14 - Jodee Brensinger vs. HJC .....	1-26-82
13 - Tracy Dean vs. Salem .....	2-20-89
13 - Tracy Dean vs. Wesley .....	2-11-89
13 - Tracy Dean vs. Glenville .....	1-28-89
12 - Sandi Goulet vs. WV Wesleyan .....	1-16-99
12 - Suzanne Lamphier vs. West Liberty .....	11-16-84
11 - Sherrise Dowell vs. Davis & Elkins .....	1-25-95
11 - Carmella Clark vs. Johns Hopkins .....	2-17-88
11 - Audrey Byrnes vs. Davis & Elkins .....	1-17-87
11 - Liz Vaughn vs. Davis & Elkins .....	1-17-87
11 - Liz Vaughn vs. Salisbury St. ....	1-30-87
10 - Sandi Goulet vs. Alderson-Broaddus .....	1-19-99
10 - Sandi Goulet vs. WV State .....	1-15-96
10 - Liz Vaughn vs. WV Tech .....	2-7-87
10 - Liz Vaughn vs. York .....	2-9-87
10 - Jodee Brensinger vs. Potomac St. ....	2-1-82
10 - Tracy Dean vs. Frostburg St. ....	2-24-88
10 - Carmella Clark vs. Frostburg St. ....	2-24-88

## Most Blocked Shots:

7 - Jenny Hawbaker vs. Shenandoah .....	2-16-83
7 - Stefanie Carr vs. Mary Washington .....	2-1-88

## SINGLE-GAME TEAM RECORDS

### Most Total Points:

129 - vs. Mt. Vernon .....	1-20-81
----------------------------	---------

### Most Points In One Half:

71 - vs. Mt. Vernon .....	1-20-81
---------------------------	---------

### Largest Scoring Margin:

117 Mt. Vernon (SC 129 - Mt. Vernon 12) .....	1-20-81
---	---------

### Fewest Total Points:

32 - vs. Bluefield State .....	12-11-93
--------------------------------	----------

### Fewest Points Allowed:

12 - vs. Mt. Vernon .....	1-20-81
---------------------------	---------

### Fewest Points Given Up In One Half:

0 - vs. Mt. Vernon .....	1-20-81
--------------------------	---------

### Most Field Goals Attempted:

113 vs. Mt. Vernon .....	1-20-81
--------------------------	---------

### Most Field Goals Made:

63 - vs. Mt. Vernon .....	1-20-81
---------------------------	---------

### Highest Field Goal Percentage:

.640 - vs. STAC (32-50) .....	11-21-92
-------------------------------	----------

### Fewest Field Goals Attempted:

42 - vs. West Virginia Tech .....	1-26-91
-----------------------------------	---------

## Fewest Field Goals Made:

14 - vs. Salem-Teikyo .....	2-17-95
-----------------------------	---------

## Most Three-Point Field Goals Attempted:

25 - vs. Salem-Teikyo .....	2-15-99
-----------------------------	---------

## Most Three Point Field Goals Made:

10 - vs. Salem-Teikyo .....	2-24-99
vs. Alderson-Broaddus .....	2-26-99

## Best Three Point Field Goal Percentage:

100% - Wesley (2-2) .....	12-6-88
---------------------------	---------

## Most Free Throws Attempted:

52 - vs. Columbia Union .....	11-27-90
-------------------------------	----------

## Most Free Throws Made:

39 - vs. Columbia Union .....	11-27-90
-------------------------------	----------

## Best Free Throw Percentage:

100% - vs. Bluefield State (16-16) .....	12-13-92
--	----------

## Fewest Free Throws Attempted:

0 - vs. Wheeling-Jesuit .....	2-7-86
0 - vs. Columbia Union .....	11-19-88

## Most Rebounds:

78 - vs. Hood .....	2-13-85
---------------------	---------

## Most Assists:

39 - vs. Wesley .....	2-11-89
-----------------------	---------

## Most Steals:

44 - vs. Mt. Vernon .....	1-20-81
---------------------------	---------

## Most Turnovers:

49 - vs. UMBC .....	1-22-80
---------------------	---------

## Fewest Turnovers:

3 - vs. Valley Forge .....	11-15-88
3 - vs. Wesley .....	2-15-90

## Fewest Personal Fouls:

5 - vs. Mt. Vernon .....	1-2-81
--------------------------	--------

## Most Personal Fouls:

32 - vs. Concord .....	12-3-83
32 - vs. Fairmont .....	2-5-91

## SINGLE-SEASON INDIVIDUAL RECORDS

### Most Points Scored:

615 - Sherry Price .....	1985-86
--------------------------	---------

### Most Points Per Game:

21.9 - Sherry Price .....	1985-86
---------------------------	---------

### Most Field Goal Attempts:

571 - Sherry Price .....	1985-86
--------------------------	---------

### Most Field Goals Made:

267 - Sherry Price .....	1985-86
--------------------------	---------

### Best Field Goal Percentage:

51.2% - Stefanie Carr .....	1988-89
-----------------------------	---------

### Most Three-Point Field Goal Attempts:

124 - Sandi Goulet .....	1995-96
--------------------------	---------

### Most Three Point Field Goals Made:

41 - Cassie Murray .....	2000-01
34 - Leslie Wolfe .....	1998-99

### Best Three-Point Field Goal Percentage:

.414 - Sandi Goulet (29-70) .....	1998-99
.400 - Tracy Dean .....	1987-88

### Most Free Throws Attempted:

314 - Tracy Hodges .....	1990-91
--------------------------	---------

### Most Free Throws Made:

209 - Tracy Hodges .....	1990-91
--------------------------	---------

# HISTORY & RECORDS

## Most Consecutive Free Throws:

33 - Toni DeStefano ..... 1999-00

## Best Free Throw Percentage:

86.1% - Ann Giaquinto ..... 1982-83

## Most Rebounds:

300 - Tracy Hodges ..... 1990-91

## Most Rebounds Per Game:

15.3 - June Eggleton ..... 1978-79

## Most Assists:

180 - Tracy Dean ..... 1988-89

## Most Steals:

96 - Katie Laidley ..... 1992-93

## Most Blocked Shots:

39 - Tracy Hodges ..... 1989-90

## Most Personal Fouls:

90 - Tracy Dean ..... 1990-91

## SINGLE-SEASON TEAM RECORDS

### Most Wins \*

20 -20-7 ..... 2000-01

### Most Losses \*

19 - 7-19 ..... 1991-92

### Fewest Wins \*

4 - 4-18 ^ ..... 1993-94

6 - 6-15 ..... 1982-83

### Fewest Losses \*

7 - 20-7 ..... 2000-01

### Most Conference Victories:

15 - 15-3 ..... 2000-01

15-4 ..... 1998-99

### Best Conference Finish:

1st ..... 1998-99

### Highest Winning Percentage:

74.0% - 20-7 ..... 2000-01

### Most Consecutive Victories:

9 ..... 1998-99

### Most Consecutive Losses:

10 ..... 1994-95

### Most Total Points Scored:

2,044 ..... 1990-91

### Most Points Scored Per Game:

78.0 ..... 1980-81

### Fewest Points Scored Per Game:

61.3 ..... 1978-79

### Fewest Points Allowed Per Game:

56.9 ..... 1998-99

### Highest Scoring Margin:

+15.3 ..... 1987-88

### Most 100 Point Games:

2 ..... 1980-81, 1987-88, 1988-89

### Most Field Goals Attempted:

2,070 ..... 1985-86

### Most Field Goals Made:

889 ..... 1985-86

### Best Field Goal Percentage:

.458 ..... 1986-87

### Most Three-Point Field Goals Attempted:

306 ..... 1998-99

## Most Three-Point Field Goals Made:

102 ..... 1998-99

## Best Three-Point Field Goal Percentage:

.351 - (34-97) ..... 1988-89

## Most Free Throw Attempts

824 ..... 1990-91

## Most Free Throws Made:

561 ..... 1990-91

## Best Free Throw Percentage:

.702 ..... 1986-87

## Most Rebounds:

1,458 ..... 1983-84

## Most Rebounds Per Game:

55.3 ..... 1979-80

## Most Assists:

508 ..... 1988-89

## Most Steals:

333 ..... 1983-84

## Most Turnovers:

593 ..... 1983-85

## Most Personal Fouls:

557 ..... 1989-90

## Most Fouls Per Game:

19.5 ..... 1995-96

\* records indicated with an \* are since the 1982-83 season only

^ Actual on-court record was 10-12...six games later forfeited

## INDIVIDUAL CAREER RECORDS

### Most Points Scored:

1,572 - Sherry Price ..... 1982-86

### Most Points Per Game (min. two years):

18.3 - Sherry Price ..... 1982-86

### Most Field Goals Attempted:

1,538 - Sherry Price ..... 1982-86

### Most Field Goals Made:

671 - Sherry Price ..... 1982-86

### Best Field Goal Percentage:

.486 - Stefanie Carr ..... 1986-89

### Most Three-Point Field Goals Attempted:

250 - Tracy Dean ..... 1987-91

### Most Three-Point Field Goals Made:

87 - Tracy Dean ..... 1987-91

### Best Three-Point Field Goal Percentage:

.348 - Tracy Dean ..... 1987-91

### Most Free Throws Attempted:

468 - Michele Taylor ..... 1984-88

### Most Free Throws Made:

312 - Paige Graff ..... 1992-96

### Best Free Throw Percentage:

84.0 - Tara Runkles (105-125) ..... 1996-98

79.9 - Katie Laidley (155-194) ..... 1992-94

### Most Rebounds:

960 - Michele Taylor ..... 1984-88

### Most Assists:

543 - Liz Vaughn ..... 1984-87

# HISTORY & RECORDS

## ALL-TIME SCORING LEADERS

Rk.	Name	Last Yr.	Yrs.	Gms.	Fr.	So.	Jr.	Sr.	Tot.	Avg.
1.	Sherry Price	1985-86	4	86	167	399	391	615	1,572	18.3
2.	Michele Taylor	1987-88	4	103	259	358	360	411	1,388	13.5
3.	Wendy Ramsey	1986-87	4	99	267	255	433	365	1,320	13.3
4.	Ann Giaquinto	1983-84	4	75	56	406	271	364	1,097	14.6
5.	Tracy Hodges	1990-91	4	108	45	246	363	412	1,066	9.8
6.	Paige Graff	1995-96	4	99	173	213	388	286	1,060	10.7
7.	Tracy Dean	1990-91	4	111	144	299	300	319	1,062	9.5
8.	Dawn Meadows	1980-81	4	81	441	217	265	130	1,053	13.0
9.	Sue Hessenauer	1993-94	4	101	102	310	354	281	1,047	10.4
10.	Stephanie Carr	1988-89	4	73	27	105	470	432	1,034	14.2
11.	Stephanie Strader	1991-92	4	104	156	223	273	280	932	8.9
12.	Leslie Wolfe	1998-99	4	105	130	187	333	249	899	8.5
13.	Kassandra Kilby	2000-01	4	107	354	128	209	195	886	8.3
14.	Sandi Goulet	1998-99	4	106	206	201	225	236	868	8.2
15.	Diane Sanders	1986-87	4	100	125	255	228	252	860	8.6
16.	Stephanie Lazor	1994-95	4	98	120	116	257	354	847	8.6
17.	Makia Staves	2001-02	4	111	122	211	219	266	818	7.4
18.	Carmella Clark	1988-89	4	87	135	51	249	337	802	9.2
19.	Emily Friend	1999-00	4	107	323	167	146	163	799	7.5
20.	Jenny Hawbaker	1983-84	4	89	143	209	231	208	791	9.9
21.	Jennifer Chapman	1998-00	2	55	---	---	372	396	768	13.9
22.	Heather Lesikar	1992-93	4	98	105	144	262	247	758	7.7
23.	Lorraine Dommel	1990-91	4	102	83	120	176	345	724	7.0
24.	<b>Cassie Murray</b>	<b>Active</b>	<b>2</b>	<b>55</b>	<b>371</b>	<b>325</b>	<b>---</b>	<b>---</b>	<b>696</b>	<b>12.6</b>
25.	Sherrise Dowell	1997-98	4	102	232	129	92	202	655	6.4
26.	Jennifer Westervelt	2001-02	4	102	173	98	168	131	570	5.6

## ALL-TIME REBOUNDING LEADERS

Rk.	Name	Last Yr.	Yrs.	Gms.	Fr.	So.	Jr.	Sr.	Tot.	Avg.
1.	Michele Taylor	1987-88	4	103	181	289	210	280	960	9.3
2.	Sherry Price	1985-86	4	86	117	249	248	262	871	10.1
3.	Tracy Hodges	1990-91	4	108	60	214	252	300	826	7.6
4.	Jenny Hawbaker	1983-84	4	89	139	255	190	220	804	9.0
5.	Diane Sanders	1986-87	4	100	112	209	180	154	663	6.6
6.	Stephanie Schwandt	2000-01	4	111	188	197	173	87	645	5.8
7.	Paige Graff	1993-96	4	99	120	131	215	171	637	6.4
8.	Makia Staves	2001-02	4	111	110	146	156	224	636	5.7
9.	Stephanie Lazor	1994-95	4	98	108	139	155	227	629	6.4
10.	Stephanie Carr	1988-89	4	73	29	96	237	256	618	8.5
11.	Wendy Ramsey	1986-87	4	99	160	126	133	114	533	5.4
12.	Alyssa Tavernia	1991-92	3	53	80	217	198	DP	495	9.3
13.	Kassandra Kilby	2000-01	4	107	194	94	95	99	482	4.5
14.	Carmella Clark	1988-89	4	87	95	46	153	173	467	5.4
15.	Heather Lesikar	1992-93	4	98	76	105	136	133	450	4.6
16.	Emily Friend	1999-00	4	107	125	94	74	104	397	3.7
17.	Leslie Wolfe	1998-99	4	105	69	81	136	90	376	3.6
18.	Jennifer Westervelt	2001-02	4	102	93	92	85	84	354	3.5
19.	<b>Brianne Hamilton</b>	<b>Active</b>	<b>3</b>	<b>73</b>	<b>35</b>	<b>93</b>	<b>217</b>	<b>---</b>	<b>345</b>	<b>4.7</b>
20.	<b>Cassie Murray</b>	<b>Active</b>	<b>2</b>	<b>55</b>	<b>163</b>	<b>174</b>	<b>---</b>	<b>---</b>	<b>337</b>	<b>6.1</b>
21.	Gail Siemer	2001-02	4	93	77	32	124	100	333	3.6
22.	Sandi Goulet	1998-99	4	106	93	72	79	86	330	3.1
23T.	Sue Barbarito	1993-94	2	45	DP	DP	157	158	315	7.0
	Ann Giaquinto	1983-84	4	75	25	119	76	95	315	4.2
25.	Sherrise Dowell	1997-98	4	102	113	59	28	101	301	2.9

## ALL-TIME ASSIST LEADERS

Rk.	Name	Last Yr.	Yrs.	Gms.	Fr.	So.	Jr.	Sr.	Tot.	Avg.
1.	Liz Vaughn	1986-87	4	101	112	158	133	140	543	5.4
2.	Tracy Dean	1990-91	4	111	108	180	115	94	497	4.5
3.	Sandi Goulet	1998-99	4	106	82	77	78	120	357	3.4
4.	Wendy Ramsey	1986-87	4	99	75	48	91	70	287	2.9
5.	Sherrise Dowell	1997-98	4	102	79	63	29	100	271	2.7
6.	Carmella Clark	1988-89	4	87	3	5	128	116	252	2.9
7.	Ann Giaquinto	1983-84	4	75	13	51	56	117	237	3.2
8.	Barb Oller	2001-02	4	95	10	71	85	65	231	2.4
9.	Paige Graff	1993-96	4	99	39	55	74	44	212	2.1

## CAREER SCORING AVG. (MIN. 2 YEARS)

Rk.	Name	Avg.	Years
1.	Sherry Price	18.3	1982-86
2.	Ann Giaquinto	14.2	1980-84
3.	Stephanie Carr	14.2	1985-89
4.	Jennifer Chapman	13.9	1998-00
5.	Michele Taylor	13.5	1984-88
6.	Wendy Ramsey	13.3	1983-87
7.	Dawn Meadows	13.0	1977-81
8.	Paige Graff	10.7	1993-96
9.	Sue Hessenauer	10.4	1990-94
10.	Jenny Hawbaker	9.9	1980-84

## SINGLE-SEASON SCORING (POINTS)

Rk.	Name	Pts.	Year
1.	Sherry Price	615	1985-86
2.	Stephanie Carr	470	1987-88
3.	Dawn Meadows	441	1977-78
4.	Wendy Ramsey	433	1985-86
5.	Stephanie Carr	432	1988-89
6.	Tracy Hodges	412	1990-91
7.	Michele Taylor	411	1987-88
8.	Ann Giaquinto	406	1981-82
9.	Sherry Price	399	1983-84
10.	Jennifer Chapman	396	1999-00

## SINGLE-SEASON SCORING (AVERAGE)

Rk.	Name	Avg.	Year
1.	Sherry Price	21.9	1985-86
2.	Ann Giaquinto	19.3	1981-82
3.	Dawn Meadows	19.1	1977-78
4.	Stephanie Carr	17.4	1987-88
5.	Wendy Ramsey	17.3	1985-86
6T.	Wendy Ramsey	16.6	1986-87
	Dawn Meadows	16.6	1979-80
8.	Michele Taylor	16.4	1986-87
9.	Stephanie Carr	16.0	1988-89
10.	Sherry Price	15.3	1983-84

## SINGLE-SEASON REBOUNDS

Rk.	Name	Rbs.	Year
1.	Tracy Hodges	300	1990-91
2.	Michele Taylor	289	1985-86
3.	Michele Taylor	280	1987-88
4.	June Eggleston	275	1978-79
5.	Sherry Price	262	1985-86
6.	Stephanie Carr	256	1988-89
7.	Jenny Hawbaker	255	1981-82
8.	Tracy Hodges	252	1989-90
9.	Sherry Price	249	1983-84
10.	Sherry Price	248	1984-85

## SINGLE-SEASON ASSISTS

Rk.	Name	Assts.	Year
1.	Tracy Dean	180	1988-89
2.	Liz Vaughn	158	1984-85
3.	Liz Vaughn	140	1986-87

# HISTORY & RECORDS

## ALL-TIME RESULTS

### 1972-73 (6-4)

Head Coach: Dr. Martha Neff

Captain: B.J. Wojcik

	Shippensburg	L	35-41
	Wilson College	W	37-30
	Frostburg	L	32-48
	Franklin & Marshall	W	51-24
F 16	Alleghany CC	W	40-21
21	@ Dickinson	W	36-28
	Morris Harvey	L	27-43
	Concord	W	45-42
	Fairmont	L	n/a
M 5	Penn Hall	W	52-32

### 1973-74 (1-4)

Head Coach: Dr. Martha Neff

Captains: Lois Barnhart

J 24	Frostburg	L	37-39
	Wilson	W	36-27
F 1	@ Salem	L	29-45
2	@ Fairmont	L	40-48
11	@ Catonsville CC	L	28-48
14	Dickinson		
18	@ Hood		
25-27	WVWAC Trny. (at Concord)		
M 4	@ Shippensburg		

### 1974-75 (3-6)

Head Coach: Dr. Glenda Guilliams

Captain: n/a

J 23	Frostburg	L	27-59
25	Wilson	W	74-26
28	WVU	L	46-50
F 1	@ Dickinson	L	54-62
3	Salem	L	48-61
12	Concord	W	50-41
18	Hood	W	59-30
20	Marshall *	L	51-74
20	Salem *	L	32-47

### 1975-76 (9-11)

Head Coach: Dr. Glenda Guilliams

Captain: Brenda Neal

	Frostburg	L	27-59
21	George Mason	W	75-41
23	@ Shippensburg	L	18-49
J 25	Wilson	W	74-26
28	@ W. Virginia Univ.	L	53-82
31	Dickinson	L	49-65
F 2	@ Dickinson	L	54-62
3	Salem	L	48-61
10	George Mason	W	59-43
12	Concord	W	50-41
18	Hood	W	59-30
19	West Virginia U. *	L	38-77
20	Marshall Univ. *	L	51-74
	Salem	L	32-47
	@ West Virginia U.	L	53-82
	Shippensburg	L	40-93
	Frostburg	W	53-47
	Bluefield	W	73-42
	Concord	L	57-71
	WV Wesleyan	W	52-46

### 1976-77 (4-7)

Head Coach: Anne Jones

Captain: n/a

J 26	West Virginia U.	L	52-90
29	@ Dickinson	W	72-60
F 3	Frostburg	L	48-78
5	@ George Mason	L	53-75
7	Catholic (on orig. sched.)		
9	@ Mt. Saint Mary's	L	68-91
11	Shippensburg	L	44-76
15	@ Shenandoah	W	85-28

17	@ UMBC (on orig. sched.)		
19	Potomac State	W	83-24
22	Shenandoah	W	92-28
25	Frostburg	L	36-79
26	@ West Liberty (on orig. sched.)		
M 2	Marshall *	L	56-81

### 1977-78 (6-9)

Head Coach: Anne Jones

Captain: n/a

J 12	Hag. JC	L	61-74
24	@ Shenandoah	L	54-65
28	@ Potomac State	W	85-57
F 1	@ Frostburg	L	63-64
2	Dickinson	W	85-66
4	Fairmont	W	75-57
10	@ Ald.-Broadus	L	64-86
11	@ Glenville	W	67-58
12	@ Salem	L	71-79
14	@ Shippensburg	L	35-97
17	UMBC	W	69-48
19	@ Catholic	L	53-85
20	Davis & Elkins	L	75-78
22	Shenandoah	W	74-68
24	Glenville *	L	51-78

### 1978-79 (3-14)

Head Coach: Anne Jones

Captain: n/a

J 13	Ald.-Broadus	L	49-77
15	Wheeling	L	65-77
17	@ Shenandoah	W	71-70
19	@ Fairmont	L	65-70
20	@ Davis & Elkins	L	46-90
22	@ Hagerstown JC	L	59-78
24	@ UMBC	L	51-91
26	Frostburg	L	59-81
30	@ Hood	L	61-63
F 3	Salem	L	69-81
6	Gallaudet	W	71-62
8	@ Dickinson	L	44-61
10	Glenville	L	59-69
17	@ Bluefield State	L	67-78
22	West Liberty *	L	68-89
M 2	Hood ^	L	56-66
3	Johns Hopkins ^	W	82-49

### 1979-80 (11-11)

Head Coach: Anne Jones

Captain: n/a

N 30	@ Potomac State #	L	51-81
D 1	Mt. Aloysius #	W	70-51
6	@ Shenandoah	W	83-77

## KEY TO ALL GAMES

^	..... Gallaudet Tournament (1978-79)
#	..... Pot. St. Tournament (1979-80)
!	..... Eastern Mennonite Tourn. (1981-82)
\$	..... King's Tournament (1988-89)
@ ...	State Farm Tipoff (1992-93, 93-94, 94-95)
%	..... STAC Tourn. (1992-93, 93-94, 94-95)
+	..... Gettysburg/Days Inn Tourn. (1994-95)
•	..... WV State Classic (1995-96)
^^	..... Longwood Tournament (1997-98)
##	..... Shippensburg Tournament (1997-98)
\$\$	..... Kutztown Tournament (1998-99)
••	..... Lock Haven Tournament (1999-00)
++	..... Wingate Tournament (2000-01)
!!	..... @ Martinsburg High School
++	..... @ Shenandoah University
%%	..... @ Musselman High School
~	..... @ Hedgesville High School
*	..... WVAC Tournament

8	@ NotreDame (Md.)	W	76-68
J 12	Va. Commonwealth	L	51-92
19	@ Ald.-Broadus	L	70-92
21	Fairmont	L	73-82
22	UMBC	W	82-73
29	@ Frostburg	L	47-99
F 1	@ Glenville	L	54-80
2	@ Salem	L	57-104
3	@ Wheeling	L	65-74
5	@ Gallaudet	W	84-68
7	Dickinson	W	69-63
9	Davis & Elkins	L	54-82
11	Johns Hopkins	W	99-49
13	Shenandoah	W	75-70
15	Hagerstown JC	W	87-68
16	Bluefield State	W	78-50
18	Catonsville CC	L	56-81
21	Concord *	L	57-99

### 1980-81 (9-14)

Head Coach: Anne Jones

Captain: n/a

D 3	@ Potomac State	L	63-83
5	Shenandoah	W	102-75
	Wheeling	L	53-83
	@ UMBC	L	62-76
13	Ald.-Broadus	L	75-82
15	Southeastern	L	64-66
J 13	Johns Hopkins	W	70-62
16	@ Fairmont	L	61-89
17	@ Davis & Elkins	L	64-85
20	Mt. Vernon	W	129-12
22	@ Shenandoah	W	87-68
24	St. Mary's	W	76-43
27	Notre Dame (Md.)	W	73-63
29	@ Frostburg	L	65-81
31	Glenville	L	72-86
F 5	@ Dickinson	L	56-67
7	Potomac State	W	80-67
10	Gallaudet	W	79-56
12	@ Hagerstown JC	W	88-45
17	@ Catonsville CC	L	73-81
19	Salem	L	68-84
21	@ St. Mary's	L	54-55
24	@ Alleghany CC	L	53-70
M 5	???		

### 1981-82 (4?-17)

Head Coach: Anne Jones

Captains: n/a

N 16	@ Wilson (?Scrim.)	W	100-35
18	@ Alleghany CC	L	62-67
24	Frederick CC	L	55-80
D 4	@ Glenville	L	51-77
5	@ Salem	W	74-68
11	@ E. Mennonite !	W	58-47
12	Bridgewater !	L	62-71
18	Fairmont	L	58-83
J 8	@ Ald.-Broadus	L	73-80
12	UMBC	L	55-77
14	@ Shenandoah	L	62-66
	Potomac State	L	54-72
23	Davis & Elkins	L	49-80
25	@ Gallaudet	W	74-69
26	Hagerstown JC	L	79-82
28	Shenandoah	L	54-65
30	WV Wesleyan	W	91-87
F 1	Potomac State	L	66-70
	Notre Dame (Md.)	L	62-92
8	@ Frostburg	L	63-93
13	Dickinson	L	56-72
17	Wheeling *	L	45-106

### 1982-83 (6-16, 1-9 WVAC)

Head Coach: Ed Fincham

Captains: n/a

N 19	@ Notre Dame	L	71-87
------	--------------	---	-------

# HISTORY & RECORDS

20	@ Salisbury St.	L	57-70
22	WV State	L	48-75
30	Hagerstown JC	L	48-85
D 3	@ Fairmont	L	39-64
4	@ Davis & Elkins	L	40-68
11	Glenville	L	50-90
J 15	Marymount	L	57-64
18	@ UMBC	W	78-73
21	@ Wheeling	L	67-76
22	@ West Liberty	L	41-82
26	@ Shenandoah	W	76-56
28	@ Ald.-Broaddus	L	52-92
29	@ WV Wesleyan	L	68-80
31	Johns Hopkins	L	69-72
F 3	Gallaudet	W	72-61
5	Salem	W	67-58
7	Frostburg	L	56-67
15	York	W	74-67
17	Shenandoah	W	70-48
19	Concord	L	66-72
22	Glenville *	L	65-91

## 1983-84 (17-9, 3-6 WVIAC)

Head Coach: Ed Fincham

Captains: Ann Giaquinto, Jenny Hawbaker

N 18	Wilson	W	78-25
19	St. Mary's	W	81-35
22	Charleston	L	74-94
30	@ Johns Hopkins	W	83-28
D 2	Lynchburg	W	72-62
3	@ Concord	L	73-100
5	@ Bluefield St.	L	59-85
9	@ Salem	W	72-62
10	@ Glenville	L	69-84
J 17	@ Marymount	W	78-45
18	Fairmont	L	71-82
21	West Liberty	L	59-67
23	@ St. Mary's	W	69-48
25	@ Shenandoah	W	76-45
27	Mt. Vernon	W	103-40
28	Wheeling	W	81-73
30	UMBC	W	83-69
F 1	Salisbury St.	W	61-58
4	WV Wesleyan	W	70-53
6	@ Frostburg	L	63-84
9	@ St. Vernon	W	88-52
11	@ Hood	W	75-31
13	@ York	W	68-59
15	Shenandoah	W	89-45
17	Davis & Elkins	L	52-62
22	Wheeling *	L	63-66

## 1984-85 (15-12)

Head Coach: Ed Fincham

Captains: Elaine Lyon, Audrey Byrnes

N 16	West Liberty	W	84-80
17	Salisbury St.	L	79-88
	WV State	L	74-75
20	@ Charleston	L	60-91
30	@ WV Wesleyan	W	64-59
D 4	Notre Dame (Md.)	W	65-51
7	Fairmont	L	49-61
8	Davis & Elkins	L	54-64
15	WV Tech	L	56-66
J 9	Marymount	W	89-76
12	Notre Dame (Md.)	W	79-73
16	Lynchburg	W	78-50
18	Wheeling	L	49-78
19	West Liberty	L	55-68
23	Salem	W	96-80
26	Glenville	L	69-75
29	Salisbury St.	W	74-59
F 1	Concord	W	73-66
2	UMBC	L	51-74
5	Shenandoah	W	85-67
7	Ald.-Broaddus	W	73-57
9	Bluefield St.	L	77-84

11	York	W	77-62
13	Hood	W	90-52
15	Frostburg	W	78-69
20	Salem *	W	61-59
21	Charleston *	L	66-88

## 1985-86 (16-12)

Head Coach: Ed Fincham

Captain: Sherry Price

N 22	@ Concord	W	76-68
23	Bluefield St.	L	63-84
25	@ Bluefield	W	81-51
D 4	@ Goucher	W	90-25
7	@ Glenville	L	60-73
9	Shenandoah	W	101-51
J 9	Salisbury St.	W	62-59
11	Notre Dame (Md.)	W	97-62
13	Marymount	W	68-64
15	Fairmont	W	71-69
18	Davis & Elkins	L	57-64
20	UMBC	L	81-88
22	Ald.-Broaddus	W	90-64
24	@ Salem	W	77-67
25	@ WV Tech	W	74-60
	Notre Dame (Md.)	W	82-55
31	WV State	L	66-67
F 3	York	W	79-63
4	Charleston	L	76-78
7	Wheeling	L	52-76
8	@ Salisbury St.	W	80-67
10	West Liberty	L	68-69
12	@ Hood	W	99-17
14	@ Frostburg	L	67-76
19	@ Shenandoah	W	66-33
21	WV Wesleyan	L	58-81
26	Davis & Elkins	W	53-51
27	Glenville *	L	61-77

## 1986-87 (13-9, 6-7 WVIAC)

Head Coach: Ed Fincham

Captains: Wendy Ramsey, Liz Vaughan

N 22	@ Fairmont	L	66-69
24	@ West Liberty	L	52-74
25	@ Wheeling	L	90-91
D 5	@ Ald.-Broaddus	L	74-76
6	@ WV Wesleyan	L	63-77
12	@ WV State	L	70-75
13	@ Charleston	W	84-76
J 10	Notre Dame (Md.)	W	64-51
12	Salisbury St.	W	60-59
17	@ Davis & Elkins	W	78-71
21	@ York	W	105-53
22	Salem	W	85-71
26	@ Frostburg	L	71-72
28	@ Notre Dame (Md.)	W	90-64
30	Salisbury St.	W	72-51
F 2	Frostburg	W	83-79
7	WV Tech	W	71-57
9	York	W	92-47
10	Concord	W	63-61
14	Bluefield St.	L	67-69
21	Glenville	W	81-78
24	Glenville *	L	68-76

## 1987-88 (19-9)

Head Coach: Ed Fincham

Captain: Michele Taylor

N 17	Columbia Union	W	102-29
20	@ Bluefield St.	W	71-69
21	@ Concord	L	81-82
30	@ Dickinson	W	75-60
D 9	Fairmont	W	77-73
10	@ Columbia Union	W	65-40
J 7	@ Roanoke	L	43-53
8	@ Hollins	W	79-58
13	@ Notre Dame (Md.)	W	94-73
15	@ Wesley	W	90-45

16	@ Wilmington	W	87-66
20	Hollins	W	106-41
22	@ Glenville	L	68-91
23	@ Salem	L	55-74
26	@ Frostburg	L	67-71
F 1	@ Mary Washington	W	78-67
3	WV State	L	74-77
6	Wesley	W	96-33
8	Ald.-Broaddus	W	65-59
10	Charleston	L	61-63
13	West Liberty	L	67-75
15	Davis & Elkins	W	71-67
17	Johns Hopkins	W	97-62
20	@ WV Tech	W	76-59
24	Frostburg	W	88-68
26	Wheeling	W	75-53
M 1	Fairmont *	W	81-65
3	Glenville *	L	71-80

## 1988-89 (17-10)

Head Coach: Ed Fincham

Captains: Stephanie Carr, Carmella Clark

N 15	@ Valley Forge	W	104-27
16	@ Wilmington	W	86-63
19	@ Columbia Union	W	96-46
22	@ Davis & Elkins	L	70-72
29	Dickinson	W	89-44
D 2	@ Charleston	L	52-93
3	@ WV State	L	84-88
6	@ Wesley	W	84-62
9	@ West Liberty	L	56-89
10	@ Wheeling	W	72-67
J 14	York \$	W	69-57
15	@ Kings \$	L	73-80
20	Wilmington	W	92-65
23	@ Fairmont	W	62-60
	Glenville	W	82-78
30	@ Frostburg	L	82-84
F 1	Mary Washington	W	96-55
4	Lebanon Valley	W	74-54
8	Ald.-Broaddus	L	65-69
11	Wesley	W	100-47
13	Concord	L	59-72
15	@ Johns Hopkins	W	67-61
18	WV Tech	L	66-69
20	Salem	W	95-77
22	Frostburg	W	77-67
25	Bluefield St.	W	73-62
28	Davis & Elkins *	L	66-71

## 1989-90 (13-16)

Head Coach: Ed Fincham

Captains: Tracy Hodges, Karen Smith

N 17	@ Concord	L	60-77
18	@ Bluefield St.	L	67-84
20	@ WV Tech	L	80-97
29	Concord	L	62-75
30	@ Navy	L	50-76
D 2	Wheeling	W	68-55
6	Millersville	L	52-66
9	@ Fairmont	W	77-71
J 11	@ Columbia Union	W	66-58
13	West Liberty	L	70-81
16	Davis & Elkins	L	62-70
17	Columbia Union	W	77-62
19	Notre Dame (Md.)	W	98-61
20	Fairmont	W	73-61
22	@ Lebanon Valley	W	79-57
24	WV Wesleyan	L	59-75
26	@ Glenville	L	76-82
27	@ Salem-Teikyo	L	60-88
29	York	W	81-60
30	WV State	W	77-60
F 2	Wilmington	W	88-70
3	Ald. - Broaddus	L	58-65
5	Davis & Elkins	W	86-59
9	@ Wheeling	L	85-87

# HISTORY & RECORDS

10	@ West Liberty	L	.....	58-66
14	Wilmington	W	.....	71-58
15	@ Wesley	W	.....	63-37
17	Charleston	L	.....	56-80
20	Concord *	L	.....	79-89

## 1990-91 (13-15)

Head Coach: Ed Fincham

Captains: Tracy Dean, Tracy Hodges

N	16	Columbia Union	W	.....	81-71
	17	Glenville	W	.....	88-84
	19	@ Wesley	W	.....	78-45
	27	Columbia Union	W	.....	81-66
	30	@ WV Wesleyan	W	.....	79-53
D	1	@ Ald.-Broaddus	W	.....	72-61
	5	Glenville	L	.....	78-79
	7	@ Charleston	L	.....	64-97
	8	@ WV State	W	.....	86-75
J	11	Concord	L	.....	67-79
	12	Davis & Elkins	W	.....	63-61
	14	@ Columbia Union	W	.....	75-72
	16	Salem-Teikyo	L	.....	56-80
	18	@ Fairmont	L	.....	68-73
	19	@ Davis & Elkins	W	.....	80-72
	21	Wheeling	L	.....	57-63
	23	Notre Dame (Md.)	W	.....	88-49
	26	WV Tech	L	.....	64-79
	28	Bluefield St.	L	.....	63-80
	30	@ Concord	L	.....	61-78
F	2	West Liberty	W	.....	92-67
	4	Wesley	W	.....	75-60
	6	Fairmont	L	.....	67-72
	8	@ West Liberty	L	.....	69-74
	9	@ Wheeling	L	.....	70-96
	13	Shippensburg	L	.....	73-83
	16	Navy	L	.....	69-81
	18	Fairmont *	L	.....	80-83

## 1991-92 (7-19)

Head Coach: Ed Fincham

Captains: Heather Lesikar, Stephania Strader, Alyssa Tavernia

N	25	@ Wesley	L	.....	64-65
	26	@ Wilmington	L	.....	72-110
D	3	Columbia Union	W	.....	78-64
	6	@ Fairmont	L	.....	59-77
	7	@ Davis & Elkins	L	.....	62-88
	17	St. Thomas Aquinas	L	.....	63-70
J	8	Charleston	L	.....	41-91
	10	@ Bluefield St.	L	.....	48-77
	11	@ Concord	L	.....	59-99
	15	Fairmont	L	.....	64-74
	17	@ Salem-Teikyo	L	.....	70-82
	20	West Liberty	W	.....	97-80
	22	@ Millersville	L	.....	45-88
	23	Concord	L	.....	65-68
	25	Ald.-Broaddus	W	.....	79-76
	27	Davis & Elkins	W	.....	64-58
	31	WV Wesleyan	W	.....	75-57
F	3	@ Columbia Union	W	.....	75-73
	5	Wheeling Jesuit	W	.....	74-62
	8	@ Glenville	L	.....	81-103
	10	WV State	L	.....	90-92
	14	@ West Liberty	L	.....	57-88
	15	@ Wheeling Jesuit	L	.....	62-87
	17	@ Shippensburg	L	.....	54-103
	20	@ WV Tech	L	.....	66-112
	22	Glenville *	L	.....	65-88

## 1992-93 (12-14, 8-10)

Head Coach: Ed Fincham

Captains: Heather Lesikar, Sue Hessenauer

N	20	WV State @	W	.....	81-53
	21	St. Thomas Aquin. @	W	.....	88-77
	23	WV Tech (OT)	W	.....	74-70

D	2	Wesley	L	.....	69-61
	4	Georgian Ct. %	L	.....	60-66
	5	Caldwell %	W	.....	92-79
	9	West Liberty	W	.....	73-66
	12	@ Davis & Elkins	W	.....	61-56
	13	Bluefield St.	L	.....	55-85
J	13	WV Wesleyan	L	.....	61-77
	15	@ Charleston	L	.....	73-84
	16	@ WV State	L	.....	61-62
	19	Columbia Union	W	.....	72-60
	23	@ Fairmont	L	.....	74-84
	25	Wheeling Jesuit	W	.....	56-55
	27	Glenville	W	.....	75-71
	30	Concord	L	.....	74-77
F	1	@ Columbia Union	L	.....	60-67
	5	@ West Liberty	L	.....	64-66
	6	@ Wheeling Jesuit	L	.....	50-63
	8	Salem-Teikyo	L	.....	64-70
	10	@ Ald. - Broaddus	L	.....	58-75
	13	Davis & Elkins	W	.....	68-58
	15	Fairmont	W	.....	84-72
	18	@ Concord	W	.....	61-53
	20	@ WV Wesleyan *	L	.....	58-71

## 1993-94 (4-18, 3-13 WVIAC)

Head Coach: Ed Fincham

Captains: Susan Barbarito, Mary Beardslee, Susan Hessenauer, Katie Laidley

N	19	Glenville @	W	.....	83-73
	20	Concord @	W	.....	74-66
	22	@ WV Tech	W	.....	72-64
D	1	@ Davis & Elkins	L	.....	61-67
	3	Georgian Ct. %	W	.....	63-59
	4	St. Thomas Aquin. %	L	.....	57-65
	6	@ Goucher	L	.....	64-66
	8	West Liberty (OT)	W	.....	84-83
	10	@ Concord	L	.....	63-67
	16	@ Bluefield St.	L	.....	32-97
	20	Fairmont St.	W	.....	84-76
J	10	WV State	W	.....	86-79
	15	WV Wesleyan	L	.....	58-72
	23	@ Salem-Teikyo	L	.....	59-89
	24	@ Ohio Valley	W	.....	69-54
	29	Charleston	L	.....	66-75
F	4	@ West Liberty	L	.....	64-81
	5	@ Wheeling Jesuit	L	.....	45-77
	7	Ald.-Broaddus	W	.....	76-73
	14	@ Fairmont	L	.....	59-90
	17	Concord	W	.....	71-63
	21	@ Bluefield St.*	L	.....	52-69

## 1994-95 (8-19, 6-12 WVIAC)

Head Coach: Ted Glezen

Captains: Stephanie Lazor, Paige Graff

N	18	Ohio Valley @	W	.....	80-49
	19	St. Thomas Aquin. @	L	.....	63-67
	22	@ Shenandoah	W	.....	67-55
	30	WV Tech	W	.....	77-71
D	2	St. Thomas Aquin. %	L	.....	57-72
	3	Bloomfield %	L	.....	54-55
	5	Concord	L	.....	71-77
	7	West Liberty (OT)	L	.....	77-89
	10	@ WV Wesleyan	L	.....	56-75
	11	@ Glenville (OT)	L	.....	66-76
J	6	Gettysburg +	L	.....	68-72
	7	Juniata +	L	.....	60-72
	14	@ Charleston	L	.....	62-73
	16	@ WV State	L	.....	58-61
	18	Fairmont	W	.....	58-50
	21	@ Salem-Teikyo	L	.....	64-86
	23	@ Concord	L	.....	65-74
	25	@ Davis & Elkins	W	.....	64-53
	28	Davis & Elkins	W	.....	57-52
	30	Wheeling Jesuit	W	.....	62-60
F	1	Bluefield St.	W	.....	66-60
	3	@ West Liberty	L	.....	48-68
	4	@ Wheeling Jesuit	L	.....	50-60

11	@ Fairmont	L	.....	43-70
17	Salem-Teikyo	L	.....	49-93
18	Alderson-Broaddus	L	.....	52-70
20	@ West Liberty *	L	.....	63-79

## 1995-96 (10-15, 7-13 WVIAC)

Head Coach: Betsy Blose

Captain: Paige Graff

N	17	Ohio Eastern •	W	.....	84-39
	18	Indiana-Southeast •	L	.....	50-52
	30	Shenandoah	W	.....	69-50
D	7	@ Wheeling Jesuit	L	.....	58-63
	9	@ West Liberty	L	.....	43-55
	20	@ UDC	L	.....	50-70
J	15	@ WV State	W	.....	67-48
	17	@ WV Tech	W	.....	70-65
	20	WV Wesleyan	L	.....	54-56
	24	@ Fairmont	L	.....	56-66
	25	Glenville	W	.....	59-55
	27	Salem-Teikyo	L	.....	59-79
	29	@ Ald.-Broaddus	L	.....	60-67
	31	Davis & Elkins	W	.....	64-46
F	5	@ Bluefield State	L	.....	45-49
	7	Wheeling Jesuit	W	.....	76-61
	8	Charleston	L	.....	84-86
	10	Concord	L	.....	72-75
	12	West Liberty	L	.....	60-84
	15	@ Columbia Union	W	.....	53-49
	17	Fairmont	W	.....	80-61
	19	@ Salem-Teikyo	L	.....	38-77
	21	Alderson-Broaddus	L	.....	56-62
	24	@ Davis & Elkins	W	.....	79-60
	26	@ Fairmont *	L	.....	58-68

## 1996-97 (11-16, 8-11 WVIAC)

Head Coach: Betsy Blose

Captains: Christine Baer, Sherrise Dowell

N	19	UDC	W	.....	69-55
	22	@ Millersville	L	.....	51-58
	25	@ Shenandoah	W	.....	66-56
D	4	Wheeling Jesuit	L	.....	58-63
	7	West Liberty	L	.....	51-62
	16	Columbia Union	L	.....	37-48
	30	Shippensburg	L	.....	50-73
J	9	@ Charleston	L	.....	68-92
	11	@ Glenville	L	.....	39-54
	13	WV State	W	.....	87-45
	15	WVU Tech	W	.....	80-72
	18	@ WV Wesleyan	L	.....	53-62
	22	Fairmont	L	.....	67-84
	25	@ Salem-Teikyo	L	.....	59-67
	27	Alderson-Broaddus	W	.....	65-57
	29	@ Davis & Elkins	W	.....	60-50
F	1	Bluefield State	L	.....	47-50
	3	@ West Liberty	L	.....	65-87
	5	@ Wheeling Jesuit	W	.....	57-54
	8	@ Concord	W	.....	82-65
	12	Columbia Union	L	.....	49-53
	15	Fairmont	L	.....	59-70
	17	Salem-Teikyo	W	.....	63-59
	19	Alderson-Broaddus	L	.....	52-69
	21	Davis & Elkins	W	.....	73-55
	24	Concord*	W	.....	84-51
	26	Charleston*	L	.....	63-83

## 1997-98 (16-12, 12-7 WVIAC)

Head Coach: Betsy Blose

Captains: Sherrise Dowell, Mikala Williams

N	14	@ Longwood ^^	L	.....	58-68
	15	Pitt-Johnstown ^^	L	.....	65-66
	21	Millersville	L	.....	53-68
	24	Shenandoah	W	.....	102-56
D	3	@ Wheeling Jesuit	L	.....	61-70
	5	St. Vincent ##	L	.....	67-76
	6	Ohio Valley ##	W	.....	65-46
	8	@ West Liberty	L	.....	64-77
J	3	Indiana (PA)	W	.....	61-58

# HISTORY & RECORDS

7	Charleston	W	.....	51-50
10	Glenville	W	.....	50-39
12	@ WV State	W	.....	69-55
14	@ WVU-Tech	L	.....	71-74
17	WV Wesleyan	W	.....	67-53
21	@ Fairmont	L	.....	54-60
24	Salem-Teikyo	W	.....	58-45
26	@ Alderson-Broaddus	L	.....	66-75
28	Davis & Elkins	W	.....	68-58
31	Bluefield St.	W	.....	68-65
F 2	West Liberty	W	.....	62-59
4	Wheeling Jesuit	W	.....	52-45
7	Concord	L	.....	69-70
14	Fairmont	W	.....	71-68
16	@ Salem-Teikyo	W	.....	75-54
18	Alderson-Broaddus	L	.....	60-66
21	@ Davis & Elkins	W	.....	89-69
23	Davis & Elkins *	W	.....	64-57
25	West Liberty *	L	.....	46-68

## 1998-99 (19-9, 15-4 WVIAC) WVIAC Champions

Head Coach: Betsy Blose

Captains: Sandi Goulet, Leslie Wolfe, Stephanie Schwandt

N 13	Kutztown \$\$	L	.....	46-65
14	Carson-Newman \$\$	L	.....	60-74
19	Columbia Union	W	.....	97-20
22	@ Millersville	L	.....	54-73
D 3	Wheeling Jesuit	W	.....	64-39
5	West Liberty	L	.....	62-73
7	WV State	W	.....	84-62
11	@ Shenandoah	W	.....	68-46
21	Shippensburg	L	.....	54-69
J 2	@ Indiana (PA)	W	.....	61-60
5	@ Davis & Elkins	W	.....	64-51
7	@ Charleston	W	.....	57-40
9	@ Glenville	W	.....	70-52
14	WVU-Tech	W	.....	76-45
16	@ WV Wesleyan	W	.....	77-53
19	Alderson-Broaddus	W	.....	71-58
21	Fairmont	W	.....	81-69
23	@ Salem-Teikyo	W	.....	66-54
30	Bluefield State	L	.....	61-68
F 1	@ West Liberty	L	.....	52-53
3	@ Wheeling Jesuit	W	.....	69-53
6	@ Concord	W	.....	87-45
13	@ Fairmont	W	.....	72-56
15	Salem-Teikyo	W	.....	57-52
18	@ Alderson-Broaddus	L	.....	65-74
20	Davis & Elkins	W	.....	87-61
24	Salem-Teikyo *	W	.....	71-57
26	Alderson-Broaddus *	L	.....	67-73

## 1999-2000 (19-9, 14-5 WVIAC)

Head Coach: Betsy Blose

Captains: Toni DeStefano, Jennifer Chapman, Emily Friend, Stephanie Schwandt

N 19	Holy Family ••	W	.....	43-30
20	Westminster ••	W	.....	75-53
23	Ohio Valley	W	.....	79-49
27	@ Columbia Union	W	.....	113-20
D 7	Millersville	L	.....	55-70
9	@ Wheeling Jesuit	L	.....	60-75
11	@ West Liberty	L	.....	64-65
29	Kutztown ++	L	.....	62-69
J 3	@ Shippensburg	L	.....	45-67
6	Davis & Elkins %%	W	.....	53-42
11	Charleston !!	W	.....	79-59
15	Glenville !!	W	.....	74-60
17	@ WV State	W	.....	64-58
19	@ WVU-Tech	W	.....	71-58
22	WV Wesleyan !!	W	.....	83-67
27	@ Fairmont	L	.....	54-57
29	Salem-Teikyo !!	W	.....	76-70
31	@ Ald.-Broaddus	L	.....	70-73
F 5	@ Bluefield State	W	.....	66-50
7	West Liberty ++	W	.....	89-65

10	Wheeling Jesuit %%	W	.....	58-56
12	Concord !!	W	.....	72-60
19	Fairmont ~	W	.....	62-51
21	@ Salem-Teikyo	W	.....	76-58
24	Alderson-Broaddus ++	W	.....	62-53
26	@ Davis & Elkins	L	.....	52-67
28	Davis & Elkins * !!	W	.....	71-58
M 1	WV Wesleyan *	L	.....	63-67

## 2000-01 (20-7, 15-3 WVIAC)

Head Coach: Betsy Blose

Captains: Barb Oller, Stephanie Schwandt

N 17	Johnson C. Smith ++	L	.....	59-79
18	Lander ++	W	.....	69-61
21	UDC	W	.....	82-55
28	Columbia Union	W	.....	83-73
D 2	WV State	W	.....	69-46
7	@ WV Wesleyan	W	.....	64-58
9	@ Davis & Elkins	W	.....	77-51
16	@ Columbia Union	W	.....	74-56
18	@ Bloomsburg	L	.....	60-65
J 3	Shippensburg	L	.....	58-71
6	Wheeling Jesuit (OT)	W	.....	54-53
8	West Liberty	W	.....	63-54
11	@ Salem Int. (OT)	W	.....	63-61
13	@ Fairmont	L	.....	51-52
15	@ Alderson-Broaddus	W	.....	69-63
18	WVU-Tech	W	.....	72-50
20	Charleston	W	.....	72-53
25	Bluefield State	W	.....	69-54
27	@ Concord	W	.....	62-55
F 1	@ Ohio Valley	W	.....	93-58
3	@ Glenville	L	.....	53-66
7	@ UDC	W	.....	80-63
10	Davis & Elkins	W	.....	84-60
12	WV Wesleyan	L	.....	63-65
15	Glenville	W	.....	76-45
23	Alderson-Broaddus	W	.....	74-58
28	Davis & Elkins *	L	.....	51-61

## 2001-02 (19-9, 13-5 WVIAC)

Head Coach: Betsy Blose

Captains: Brianne Hamilton, Makia Staves

N 26	@ Shippensburg	L	.....	51-64
29	Columbia Union	W	.....	73-56
D 4	Bowie State	W	.....	65-43
8	Davis & Elkins	W	.....	63-51
18	@ UDC	W	.....	73-42
28	Benedict	W	.....	77-56
29	@ Bowie State	L	.....	65-69
J 3	Bloomsburg	L	.....	49-75
5	@ Wheeling Jesuit	W	.....	76-69
7	@ West Liberty	L	.....	48-50
10	Salem International	W	.....	51-47
12	Fairmont	W	.....	58-35
14	Alderson-Broaddus	W	.....	83-61
17	@ WVU-Tech	L	.....	55-63
19	@ Charleston	W	.....	73-52
24	Bluefield State	W	.....	81-53
26	Concord	W	.....	54-46
28	@ WV State	W	.....	69-43
31	Ohio Valley	W	.....	82-39
F 2	Glenville (OT)	W	.....	76-69
6	UDC	W	.....	73-58
9	@ Davis & Elkins	W	.....	67-49
11	@ WV Wesleyan (2OT)	W	.....	82-80
14	@ Glenville	L	.....	49-58
21	@ Alderson-Broaddus	L	.....	60-63
23	WV Wesleyan	L	.....	63-68
25	Bluefield State *	W	.....	102-75
27	Concord *	L	.....	62-69

## ALL-TIME SERIES RECORDS

Alderson-Broaddus	.....	11-18
Alleghany CC	.....	1-2
Benedict	.....	1-0
Bloomfield	.....	0-1
Bloomsburg	.....	0-2
Bluefield State	.....	11-13
Bowie State	.....	1-1
Bridgewater	.....	0-1
Caldwell	.....	1-0
Catholic	.....	0-1
Catonsville CC	.....	1-2
Charleston	.....	4-16
Columbia Union	.....	15-3
Concord	.....	13-20
Davis & Elkins	.....	24-15
Dickinson	.....	5-5
Eastern Mennonite	.....	1-0
Fairmont St.	.....	14-25
Franklin & Marshall	.....	1-0
Frederick CC	.....	0-1
Frostburg St.	.....	6-18
Gallaudet	.....	5-0
George Mason	.....	2-1
Georgian Court	.....	1-1
Gettysburg	.....	1-1
Glenville	.....	11-22
Goucher	.....	1-1
Hagerstown JC	.....	2-4
Hollins	.....	2-0
Holy Family	.....	1-0
Hood	.....	5-2
Indiana (PA)	.....	1-0
Indiana SE	.....	0-1
Johns Hopkins	.....	6-1
Johnson C. Smith	.....	0-1
Juniata	.....	0-1
King's	.....	0-1
Kutztown	.....	0-1
Lander	.....	1-0
Lebanon Valley	.....	3-0
Longwood	.....	0-1
Lynchburg	.....	2-0
Marshall	.....	0-3
Marymount	.....	3-1
Mary Washington	.....	2-0
Millersville	.....	0-5
Morris Harvey	.....	0-1
Mount Aloysius	.....	1-0
Mount St. Mary's	.....	0-1
Mount Vernon	.....	3-0
Navy	.....	0-2
Notre Dame (MD)	.....	10-3
Ohio-Eastern	.....	1-0
Ohio Valley	.....	5-0
Penn Hall	.....	1-0
Pittsburgh-Johnstown	.....	0-1
Potomac State	.....	4-3
Roanoke	.....	0-1
Salem International	.....	145-20
Saint Mary's	.....	3-1
St. Thomas Aquinas	.....	1-4
St. Vincent	.....	0-1
Salisbury St.	.....	6-2
Shenandoah	.....	19-3
Shippensburg	.....	0-9
Southeastern	.....	0-1
UDC	.....	5-1
UMBC	.....	4-5
Valley Forge	.....	1-0
VCU	.....	0-1
Wesley	.....	7-3
West Liberty	.....	7-25
Westminster	.....	1-0
West Virginia	.....	0-5
WV State	.....	10-9
WVU-Tech	.....	10-7
WV Wesleyan	.....	9-14
Wheeling Jesuit	.....	13-20
Wilson	.....	6-0
Wilmington	.....	5-1
York	.....	8-0

# HISTORY & RECORDS

## ALL-TIME ROSTER

A	
Sandy Anderson .....	1983-84
Linda Arnica .....	1978-79
Melissa Arnold .....	1997-98

B	
Christine Baer .....	1994-97
Susan Barbarito .....	1992-94
Ursula Bardsley .....	1992-93
Lois Barnhart .....	1972-74
Wendy Barrett .....	1987-90
Mindy Barrons .....	1974-78
Monica Bates .....	1985-86
Mary Beardslee .....	1992-94
Barb Bennett .....	1976-77, 78-79
Kara Berlin .....	1993-95
Amy Berry .....	1987-88
Jen Blatt .....	1981-83
Jeanette Blubaugh .....	1980-82
Patty Bourne .....	1985-87
Crystal Bowers .....	1992-93
Heathers Bowers .....	1989-91
Val Bowman .....	1979-80
Jodee Brensinger .....	1980-82
Faith Brown .....	1982-83
Audrey Byrnes .....	1983-85, 86-87

C	
Kelley Cain .....	1978-79
Veronica Caine .....	1983-84
Lori Campbell .....	1984-85
Leslie Caple .....	2000-01
Stephanie Carr .....	1985-88, 89-90
Valerie Chaney .....	2000-01
Jennifer Chapman .....	1998-00
Carmilla Clark .....	1985-89
Sharon Clark .....	1978-79
Vickie Clipp .....	1974-75
Sherry Cogan .....	1979-80
Chippee Coleman .....	1976-77
<b>Ashana Cowans .....</b>	<b>2000-02</b>
Joan Coyne .....	1981-83
Barb Cosner .....	1981-83
Jan Cromis .....	1974-75

D	
JoAnn Davis .....	1986-88
Sue Davis .....	1975-76
Meaghan Dawes .....	1993-94
Tracy Dean .....	1987-91
Barb DeLauter .....	1975-76, 77-78
Toni DeStefano .....	1998-00
Betsy Dike .....	1989-91
Sheila Dillow .....	1984-85
Terry Dixon .....	1983-87
Lorraine Dommel .....	1987-91
Sherrise Dowell .....	1994-98

E	
June Eggleton .....	1976-80
Latriece Elcock .....	1995-96

F	
Carol Faucett .....	1972-75
Sharon Feeney .....	1997-00
Andrea Felton .....	1980-81
Meredith Fenton .....	1993-94
Amanda Fleming .....	1998-99
Renee Frey .....	1983-84
Emily Friend .....	1996-00

G	
Krystal Gale .....	1995-96
Ann Giaquinto .....	1980-84
Lee Anne Girman .....	1981-83
Monica Good .....	1982-83
Patty Gostowski .....	1982-83
Sandi Goulet .....	1995-99
Paige Graff .....	1992-96
Rebecca Graham .....	1988-90, 91-92
Andrea Green .....	1985-86
Lisa Green .....	1994-96

H	
<b>Brianne Hamilton .....</b>	<b>1999-02</b>
Vicki Harbaugh .....	1976-77
Tameka Harrison .....	1995-96
Jenny Hawbaker .....	1980-84
Kristi Hawkins .....	1982-83
Grace Hazell .....	1986-87
Sue Heavener .....	1979-81
Ellen Heller .....	1977-78
Lisa Hering .....	1980-83
Kara Heslen .....	1995-96
Sue Hessenauer .....	1990-94
Alison Hinckle .....	1980-81
Tracy Hodges .....	1987-91
Pam Hohman .....	1979-80
Kim Holt .....	1989-90
Christi Horton .....	1993-94
Lisa Hurst .....	1984-85
Kelly Hussion .....	1989-91
Rene Hypes .....	1983-84

J	
Kristie Jones .....	1981-82, 85-86
Lillie Jeffries .....	1987-88
Lou An Judy .....	1972-73

K	
Sue Kennedy .....	1972-74
Creama Keplinger .....	1986-87
Tyra Keplinger .....	1991-92
Korby Kesselring .....	1978-79
Krista Kidwell .....	1990-91
Kassandra Kilby .....	1996-97, 98-01
Joan Kleinknecht .....	1982-83
B.J. Kronic .....	1996-97
<b>Carrie Kunkel .....</b>	<b>2001-02</b>

L	
Katie Laidley .....	1992-94
Susan Lamphier .....	1984-85
Eileen Lardizabal .....	1975-76, 78-79
Deanna Lawrence .....	1989-90
Stephanie Lazor .....	1991-95
Robin Leonard .....	1981-84
Heather Lesikar .....	1989-93
Renee Lettington .....	1996-97
Lesley Lewis .....	1991-93
Michelle Life .....	1977-78
Sharon Littlejohn .....	1985-86
Cindy Lord .....	1975-76
Tracey Loveland .....	1976-77
Laura Lovett .....	1980-81
Elaine Lyon .....	1983-85

M	
Beverly McCann .....	1979-80
Bridget McIntyre .....	1991-94
Michelle McNichol .....	1982-83
Leah Marlett .....	1994-95
Beth Martin .....	1976-77
Peachy Meadows .....	1977-81
Donna Miller .....	1976-78
Leslie Miller .....	1986-87
Rhonda Miller .....	1985-86
Gaby Moffitt .....	1980-81
Rachael Molesky .....	1997-98
Karla Moore .....	1990-91
Melanie Moser .....	1992-93
Diann Mullin .....	1978-79
Kelly Murphy .....	1989-92
<b>Cassie Murray .....</b>	<b>2000-02</b>
<b>Danielle Murray .....</b>	<b>2001-02</b>

N	
Brenda Neal .....	1974-76
Carolyn Neil .....	1991-93

O	
Lori Oden .....	1976-77
Stephanie Olexa .....	1973-74
Barb Oller .....	1998-02
Shelly Ostrowski .....	1974-76
Jennie Oldenburg .....	1978-79

P	
Karen Palmer .....	1975-78
Gina Piazza .....	1988-89
Megan Poehlman .....	1998-00
Sherry Price .....	1982-86

Q	
Marg Quinn .....	1972-74

R	
Wendy Ramsey .....	1983-87
<b>Gaynell Reese .....</b>	<b>2000-02</b>
Angie Refresco .....	1983-84
Cheryl Roberts .....	1977-79
Tara Runkles .....	1996-98
Gail Russell .....	1976-77
Jenny Ruth .....	1980-81

S	
Kelly Sadtler .....	1999-00
Diane Sanders .....	1983-87
Adriane Schell .....	1994-96
Stephanie Schwandt .....	1997-01
Margaret Sears .....	1980-81
Gail Siemer .....	1998-02
Pat Sigle .....	1972-73, 74-75
Karen Smith .....	1988-90
Sarah Smith .....	1995-96
Kathy Snyder .....	1972-73
Tammy Spring .....	1987-88
Linda Staub .....	1972-73
Makia Staves .....	1998-02
Cindy Stewart .....	1977-78
<b>Lindsay Stewart .....</b>	<b>2001-02</b>
Susie Stocker .....	1977-78
Stephanie Strader .....	1989-92
Kelli Summers .....	1988-89

T	
Dorinda Tague .....	1978-80
Alyssa Tavernia .....	1989-92
Carol Taylor .....	1977-78
Chris Taylor .....	1977-79
Lynn Taylor .....	1974-76
Michele Taylor .....	1984-88
Teresa Taylor .....	1986-88
Paula Teare .....	1974-75
Elaine Teets .....	1979-81
Mary Jo Teets .....	1982-83

V	
<b>Ashley van Norden .....</b>	<b>2000-01</b>
Liz Vaughn .....	1983-87

W	
Betsy Wall .....	1979-80
Bonnie Walker .....	1984-85
Jill Washburn .....	1988-89
Ann Wayne .....	1972-73
Linda Weller .....	1972-74
Dawn Wenner .....	1988-91
Jennifer Westervelt .....	1998-02
Ann Wharton .....	1973-75
Brenda Whipp .....	1992-94
Gina Whitacre .....	1982-83
Trudy White .....	1973-75
Wendy Wiestling .....	1983-84
Mikala Williams .....	1996-98
Avila Wilson .....	1974-75
Katy Wilson .....	1977-78
Pam Wilt .....	1972-74
Melissa Windle .....	1998-01
B.J. Wojcik .....	1972-73
Leslie Wolfe .....	1995-99

Y	
Geneva Yost .....	1977-78
Cindy Young .....	1975-76
Terry Youngblood .....	1978-80

Z	
Barb Zickerfoose .....	1973-74
Cecilia Zindel .....	1974-75

**Bold indicates current players**